

The EFO Collector

The journal of philatelic errors, freaks and oddities,
published by the EFO Collectors' Club, a nonprofit organization.

Initiation fee, \$1. Annual dues, \$12, U.S. and Canada; Overseas, \$25.

Copyright 1992 by the EFO Collectors' Club.
APS Affiliate No. 103. Member COPO.

President, Editor: Howard Gates

Vice-President: Louis E. Repeta

Volume XIV, No. 6 (#82)

June 1992

Founded 1978

And The Winners Are--

It's a pleasure to report that, according to Lou Repeta, who counted them, 40 ballots were cast in the election of EFOCC officers and board members. Officers ran unopposed, except for possible write-ins, of which there were none. The successful candidates were--

President, Jim Cotter
Vice President, Walt Cole
Secretary, Jim McDevitt
Treasurer, Don Reinke.

There was actual competition in the race for Executive Board Member At Large. There were three candidates for two seats, and the balloting was very close; it finished as follows--

Tim Lindemuth, 29 votes;
Joe Licata, 27 votes;
Mike Perry, 23 votes.

Thus, as of 1 July, the seven-member Executive Board will comprise Cotter, Cole, McDevitt, Reinke, Lindemuth, Licata-- and Gates, as editor of *The EFO Collector*, the only non-elected member of the Board.

So this is my swan song as president. I'm delighted to retire in favor of energetic and highly focused Jim Cotter-- and I think we'll have a better club with his accession. My gratitude to all those who helped me during the past two years, and my congratulations to the winners.

--Howard Gates

Contents--

From the Editor	2
Three Fascinating Freaks	3
Handsome Foreign Errors	8
Howard Frank Springs	8
To the Editor	8
Secretary's Report	10
EFO Post	10
In Honor of the Olympics	12
President-Elect Cotter	12
on Philatelic Show 93	
Look Ahead to '93	13
Auction	14

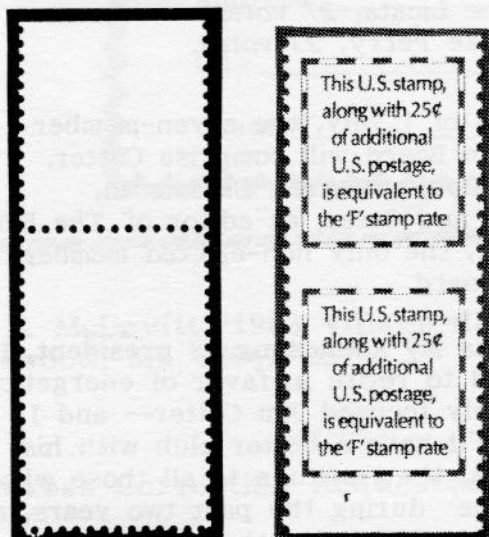
"Exists Miscut;" Coil Imperforates With Marginal Markings: A New Collecting Specialty?	5
--	---



STAMPOREE Was Good To Me (I Think)--

It was a pleasant weekend in West Palm Beach. It was good to meet the folks of the Florida Federation of Stamp Clubs. It was fun to inspect the exhibits. And it was rewarding to tour the bourse (except for the exhaustion of my feet and my wallet).

But did I act too fast? Is this 20c America's Libraries albino really a legitimate error, even with its Philatelic Foundation certificate? Or is it just printer's waste?



I'm not concerned about the legitimacy of my second purchase, the makeup rate pair, imperforate horizontally. And the price was right.

But my favorite buy was a badly-toned cover from the 1850s, bearing the manuscript postmark "Wilderness, Va." and addressed to a lawyer in Rackoon Ford, Culpeper County. Wilderness is my Ol' Virginny Home, and those postmarks are hard to come by.

--Howard Gates

ALL CONTENTS COPYRIGHT 1992 BY THE EFO COLLECTORS' CLUB. Authors and contributors have express permission to reuse any of their material elsewhere without restriction. Except for material reprinted herein, or material individually copyrighted by the author, material herein may be reprinted elsewhere as long as full credit is given to *The EFO Collector*, citing the issue date and number, and giving the address of the EFOCC secretary.

The EFO Collector is published six times yearly in even-numbered months. The deadline for any issue is the 15th of the month preceding the month of issue-- e.g., May 15 for the June issue. Send editorial material directly to the editor.

Membership includes subscription to *The EFO Collector*. Application for membership, accompanied by \$13 (\$26 overseas) to cover the first year, should be sent to the Secretary.

Advertising for *The EFO Collector* will be accepted at the following rates: first insertion-- full page, \$30; half page, \$16; quarter page, \$9; classified ads, 6c per word. Discounts on subsequent insertions of the same ad: second insertion, 5%; third, 10%; fourth and subsequent, 20%. The first insertion must be fully prepaid. Deadline for ad copy: tenth of the month prior to the month of issue. Advertisements, ad payments and related inquiries should be directed to the Advertising Director.

EFOCC members are entitled to three free 35-word (excluding address) classified ("EFO POST") ads annually. These should be sent directly to the editor.

1990-1992 EFOCC OFFICERS AND CHAIRMEN

PRESIDENT

Howard P. Gates, Jr.
HC73 Box 955
Locust Grove, VA 22508
Phone: 703-972-2084

VICE-PRESIDENT

Louis E. Repeta
P.O. Box 16058
Charleston, SC 29412

TREASURER

Donald C. Reinke
484 Kingsford Drive
Moraga, CA 94556
Phone: 415-376-8994

SECRETARY

CWO James E. McDevitt, USCG Ret
1903 Village Rd., W.
Norwood, MA 02062-2524
Phone: 617-769-6531

BOARD MEMBER AT LARGE

Earl K. McAfee
1912 Rebecca Drive
Champaign, IL 61821

EDITOR

Howard P. Gates, Jr.
HC73 Box 955
Locust Grove, VA 22508
Phone: 703-972-2084

ADVERTISING DIRECTOR

Dennis Ryan
120 E. St. Lawrence Ave. #213
Janesville, WI 53545

AUCTION DIRECTOR

Edward T. Close
2 Elm Lane
Williamson, NY 14589
Phone: 315-483-2599

BOARD MEMBER AT LARGE

Bruce H. Mosher
P.O. Box 033236
Indianapolis, FL 32903
Phone: 407-723-7886

BOARD MEMBER

Scott A. Shaulis
Arbutus Village D5, Elgin Dr.
Johnstown, PA 15904

Three Fascinating Freaks--

The marbled bust of Washington

On the left-hand stamp of the trio below, olive-green ink has mottled the profile of George Washington. Smearing the Father of Our Country? Shame!



The striped Madonna

Can anyone tell us what caused the contemporary stripes to be imposed on this Madonna and Child classic by Tiepolo?



The spying-eye blanket

Security is tight in the Museum of the American Indian-- the guard peers out at museum-goers through holes in the Navajo blanket. Those holes are black rings filled with white; printer's doughnuts?



BEST SELLING BOOKS

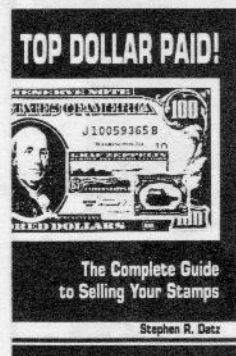


U.S. Errors - 1992 Edition is the most comprehensive catalogue of U.S. major errors stamps ever published. It has become *the* standard reference for U.S. major errors. It lists, illustrates, and prices every U.S. imperforate (including all known imperf PNC strips), color omitted error, and invert.

U.S. Errors is loaded with footnotes (such as which errors usually are encountered in poor condition) and cautions about which errors are faked (and there *are* dangerous fakes out there!). Quantities known for each issue are noted. A dealer directory lists the most active dealers in the U.S. error market.

Whether you're buying or selling, or just want to be aware of what's out there in case you come across something unusual, *U.S. Errors - 1992* is a must!

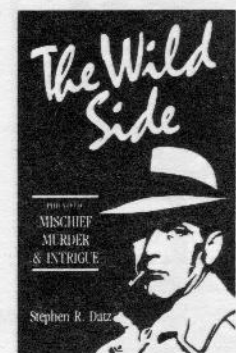
U.S. Errors - 1992 \$12.95 *Autographed, Hardbound, Limited Edition* \$30.00



Top Dollar Paid! has become one of the best selling books in philately. It's really two books in one: a concise guide to what works best in selling, and an entertaining behind-the-scenes journey into the real-life world of stamp dealing. It's been critically acclaimed as the best book ever written on the subject.

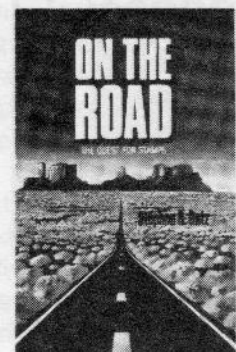
Even if you're not in the market to sell right now, perhaps the greatest service *Top Dollar Paid!* performs is to make you aware of the financial consequences of purchases you're making today. *All stamps are not created equal!* *Top Dollar Paid!* could be worth hundreds or even thousands of dollars to you.

Top Dollar Paid! \$9.95 *Autographed, Hardbound, Limited Edition* \$30.00



The Wild Side, the second in Datz's trilogy about the stamp business, is a journey into the side of stamp dealing you never hear about. In stories drawn from Datz's own first hand experiences you'll meet rip-off artists, credit card scammers, master's of the big con (yes, big cons are alive and well), murderers, shadowy travelling men who sell stamps too good to be true (regummed, reperfed, etc.) You'll meet a variety of con men, rascals, scoundrels, eccentrics and characters, and delightfully entertained by incredible true adventures from a side of philately you never imagined: *The Wild Side!* Once you start reading, you won't be able to put it down!

The Wild Side \$9.95 *Autographed, Hardbound, Limited Edition* \$30.00



On The Road, the third in Datz's trilogy, is for every soul who's ever dreamed of running away to join the circus or imagined stamp dealing to be a travel poster existence of jetting away to distant cities, handling rare stamps every day, dining out every night, leading a life of adventure!

What an odyssey. Missed planes, broken-down cars, third-rate hotels, blizzards, thieves, wild goose chases, slow shows, enigmatic millionaires, the tantalizing promise of inverts at the truckstop in Last Chance, Arizona, and even tornados.

On The Road takes you from the bright lights of the big cities to the desolate hinterlands of Wyoming, Arizona, and New Mexico. Along the way, you'll be charmed and entertained by some of the most unconventional, unpredictable, and outrageous true-life characters in philately.

On The Road \$9.95 *Autographed, Hardbound, Limited Edition* \$30.00

Add \$1.75 shipping per order.

Published by and available from
GENERAL PHILATELIC CORPORATION
 P.O. BOX 402 LOVELAND, CO 80539

"Exists Miscut;"

Coil Imperforates With Marginal Markings: A New Collecting Specialty?--

This article combines the input of Mike Perry, who provided plate layout data and many of the illustrations, with that of editor Howard Gates, who wrote the text.

It isn't often that a collecting opportunity arises that will regenerate the thrill of the search. But here's a possibility: the double error of coil pairs that *have no perforations* and are so grossly miscut that *sheet-margin markings appear*. Often, as a bonus, these double errors lack denomination, country of origin, or some other major portion of the stamps' inscriptions.

We're all familiar with coil pairs that are imperforate, but probably less well-acquainted with coil pairs that display sheet markings at top or bottom. In the examples shown here, those failings are combined. Not only are the coil pairs imperforate, they are so miscut that they carry electric-eye bars from the top of the sheet, or dashes, sheet guidelines, or other markings from the sheet bottom. That combination greatly increases their scarcity.

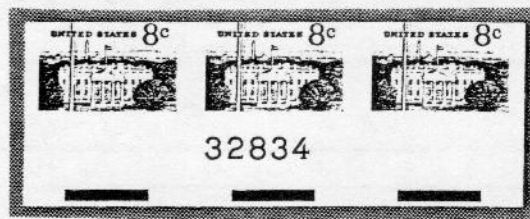
Coil stamps are printed in side-by-side strips on a continuously-fed roll of stamp paper (the "web"). After printing, the paper is perforated and slit into individual coil strips. Starting in 1958 with the 432-subject coil printing-plate layout, the plate was 18 coil strips wide. Later, on the C press, the width was 18 or 20 coil strips, and on the D press, 20 strips. So the chance that a miscut coil comes from the top of the plate and is printed with electric-eye bars is one in eighteen or one in twenty. The same odds apply to a miscut coil strip's being printed with bottom-margin plate markings. The chances that stamps that are imperforate are also grossly miscut can only be guessed at; we might guess that the odds are much less than one in ten that when a new web is being started through the press, gross slitter misalignment and non-perforation occur

simultaneously and undetected by inspectors. Combining these odds with those that a miscut strip comes from the top or bottom of the sheet makes imperforate coil pairs with marginal markings 90 or more times scarcer than ordinary imperfs.

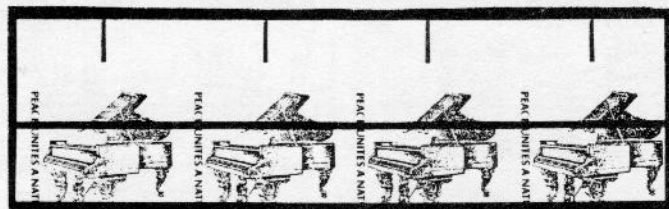
Stephen R. Datz's fine catalog, *U.S. Errors*, lists coil imperforate pairs and their estimated quantities. For the first of our examples, the 4c Lincoln imperf coil of 1958, Scott 1058a, Datz reports a quantity of 500+ imperf pairs. But there are 47 pairs, all in one roll, known imperf with *EE bars at the top*, suggesting that either Datz's quantity estimate or our probability guess may need correction.



Datz also reports 500 pairs of the imperforate 8c Flag Over the White House, Scott 1338Gh. It is shown here with full plate number and EE dashes at the bottom.



The 8.4c Steinway Grand Piano of 1978, Scott 1615Cf, imperforate, EE bars in upper margin, is shown below. Datz reports a quantity of a "few thousand pairs" for the imperf precanceled with lines only (no town).



Continued on the next page

"Exists Miscut;"

*Coil Imperforates With Marginal Markings:
A New Collecting Specialty?--*

Continued from the preceding page

The 15c Fort McHenry Flag imperf coil, Scott 1618Cd, Datz quantity "several thousand pairs," is shown here in a strip of five with tips of dark blue registration marks showing below the center stamps.



The imperforate 20c Flag Over the Supreme Court of 1981, Scott 1895a, is shown here with narrow EE bars at top. Datz indicates the existence of a "few thousand pairs."



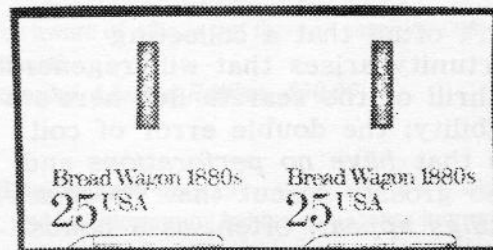
Scott 1901b, the 5.9c Bicycle, is illustrated in an imperf strip of four. Datz reports 480 pairs of the imperf. In the example, there are tips of narrow blue EE bars above each stamp.



Scott 2115a, the 1985 22c imperf Flag Over the Capitol coil is shown next in two forms: first, with EE bars at top, and second, with sheet guideline at bottom. Again, Datz lists a "few thousand pairs."



The 1986 25c Bread Wagon, Scott 2136a, exists imperforate and miscut with full EE bars, denomination and legend in the upper margin. A rarer example exhibits the bottom margin registration line and part of a "counting mark." Datz reports a "few thousand" imperf pairs.



The more-recent 25c Flag Over Yosemite coil, imperforate and with EE bars in the upper margin, is shown below. It is Scott 2280a, issued in 1988. Datz gives the quantity of imperf pairs as "1000+."



Another example of the imperf Flag Over Yosemite coil, Scott 2280a, shows no portion of the stamps-- just the full horizontal registration mark and vertical counting mark. (The line at bottom is printed by ink that clings to the beveled

Continued on the next page

"Exists Miscut;"

*Coil Imperforates With Marginal Markings:
A New Collecting Specialty?—*

Continued from the preceding page

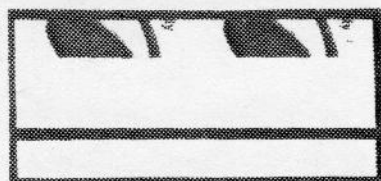
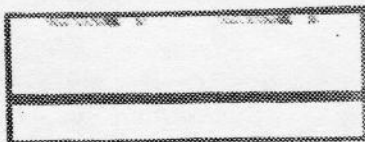
edge of the plate.) This strip came from a full roll of 100 "non-stamps" found in plastic coil bubble-wrap that bore printing identifying it as a 25c Flag coil.



The 25c Honeybee coil, famous for other strangenesses, is shown here imperforate, with sheet-margin markings at the top. It is Scott 2281a. Datz estimates that "several hundred" imperf pairs exist.



Finally, shown below are two versions of the miscut, imperf, "F" rate Tulip coil of 1991, Scott 2518 (var), with the black horizontal registration mark below the stamps. Datz gives the imperf pair quantity as "1000+." An almost identical stamp, the 29c Tulip, if imperforate and miscut very low like the top example, could not be distinguished from the "F" rate stamp, as the identifying "F" rate legend, "For U.S. addresses only," would be cut away.



It is unlikely that the examples discussed above are the only imperforate coils so grossly miscut as to show upper or lower marginal sheet markings. Datz shows that each of the following imperf coil pairs, not previously mentioned, "exists miscut," which gives you, our members, the opportunity to pursue the search:

Scott 1297a, 3c Parkman precancel, 1975;
1305Eg, 15c Oliver W. Holmes, 1978;
1520b, 10c Jefferson Memorial, 1973;
1616a, 9c Capitol Dome, 1976;
1617b, 6c Justice, 1977;
1618b, 13c Liberty Bell, 1975;
1813b, 3.5c Violins, 1980;
2005a, 20c Consumer Education, 1982;
2112a, "D" rate (22c) coil, 1985;
2135a, 17c Dog Sled, 1986;
2261a, 16.7c Popcorn Wagon, 1988;
C82a, 11c Jet Aircraft, 1971.

If you find any of these-- or other-- imperf coil stamps miscut with top or bottom markings, please send me photocopies for publication.

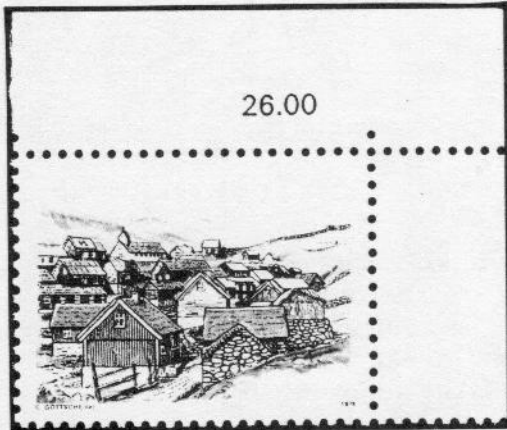
--Howard Gates

Mike Perry
P.O. Box 1194
Rainier, OR 97048

Howard Gates
HC73 Box 955, Lake of the Woods
Locust Grove, VA 22508

Handsome Foreign Errors--

It often seems that a stamp in which the inscription is missing, leaving an uncluttered vignette, is much prettier than the errorless stamp. Such is the case with Scott 32 of the Faroe Islands, the 130o Mykines Village with the maroon denomination, country name, etc., omitted. Twenty such stamps exist.



Romania Scott 1081a, the 1.75 lei 1956 Census, is a good-looking stamp with its center inverted. We have no information on how many there are.



Howard Frank Springs For It--

We are pleased to report that Howard Frank of New York, a foreign-error collector, responded to the appeal by Romania's Munteanu Liviu with enough dollars to support a year's foreign membership and three quarter-page ads. Howard will receive the Romania 35-lei imperforate pair.

To the Editor--

(Can any of our members answer these questions?)

In the two blocks of Scott 2027-2030 shown below, there is a difference in colors. In the block at the top, the covered bridge and the children's clothing are red, but they're orange vermillion in the plate block below. All other colors are alike on the two blocks. Is one of these a color error, a freak, or an oddity, how common is it, and what is the true color? Any information you can offer would be very helpful.



--Heinz J. Offenbecher
P.O. Box 3022
Alliance, OH 44601

UNITED STATES

★ **PROOFS** ★

★ **ESSAYS** ★

★ **MAJOR
ERRORS** ★

15-Page Proof & Essay List
for \$1.00 in postage. Major
Error Price List for 45¢
in postage.

WILLIAM S. LANGS

P.O. Box 46
New Milford, NJ 07646
Phone: (201) 836-0880
Fax: (201) 801-0460



Secretary's Report--

Welcome to new members:

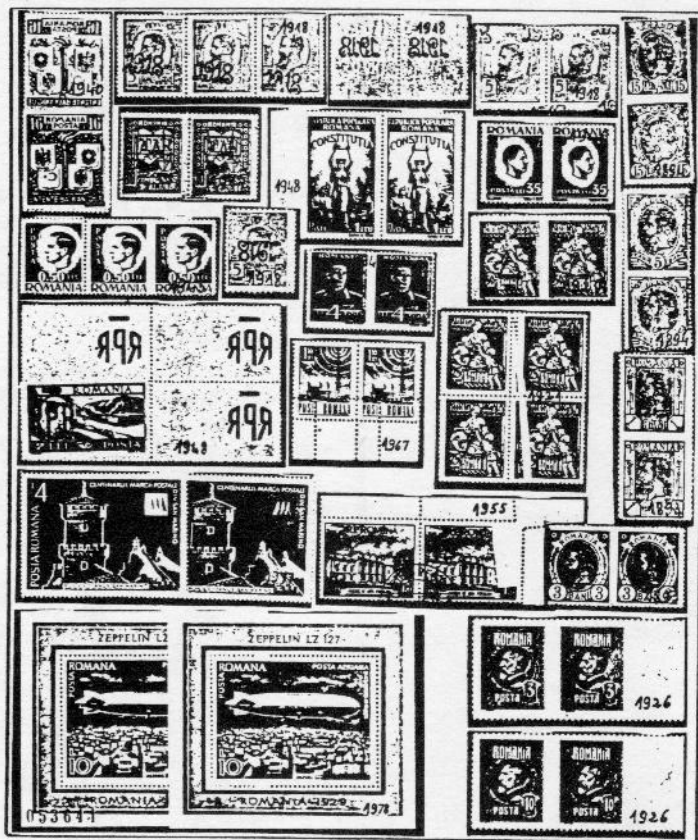
- 881- Leonard T. Mead, P.O. Box 6, Paola, KS 66071; *Imperfs, color missing, broken perf pins, tagging errors, shifts.*
 882- R.R. Zoller, Ag-West, P.O. Box 8, Bakersfield, CA 93302-0008.
 883- William F. DiSalvatore, 5 Raccoon Circle, Cherokee, AR 72529; *Dealer.*
 884- Michael A. Banas, Jr., 2152 NW 78th Ave., Margate, FL 33063; *Dealer.*

--Jim McDevitt

Selling on behalf of a friend: Scott 2115c, used on piece with a Skokie, IL Nov. 5, 1987 postmark. That's the 22c Flag Over the Capitol coil with black instead of blue star field. \$400. Howard Gates, HC73 Box 955, Locust Grove, VA 22508. Phone 703=972-2084.



ROMANIA ERRORS



MUNTEANU LIVIU

C.P. 45, 70750 BUCURESTI-45
ROMANIAN

EFO Post--

WANTED: Honeybee EFOs. Imperfs, misperfs, bee out of frame line, bee low, or taking off. I can use them with or without plate numbers, mint or used. Bobby Reece, Jr., P.O. Box 511520, St. Louis, MO 63129.

FOR SALE: Scott 1734 misperf pair, \$7; 1529 color shift, \$6; 1690 color shift, \$7; 1856 misperf-between, \$7; 2276 color shift, \$7. All MNH. John Casey, P.O. Box 673, Rhinebeck, NY 12572.

Have several U.S. 19c Pawn mint blocks of four with one blind vertical perf. Will trade for other mint U.S. EFOs of comparable value. Mark Shofron, 3920 E. San Simeon Drive, Tucson, AZ 85718.

"Discovering U.S. Rotary Booklet Pane Varieties 1926-1978," 128-page book by Bruce Mosher, is loaded with EFO booklet pane information and illustrations. \$8.95 postpaid. Mosher, P.O. Box 033236, Indialantic, FL 32903.

FOR SALE: 1394 misperf, \$6.60; 1529 color shift, \$6.00; 1690 color shift, \$7.00; 1856 imperf-between, \$8.50; 2276 color shift, \$6.60. John Casey, P.O. Box 637, Rhinebeck, NY 12572-0637.

Interested in buying horizontally misperfed 37c Millikan stamps (U.S. Scott 1866). If not for sale, photocopies would be appreciated; doing research work. Thomas Smith, EFOCC 454, P.O. Box 23149, Phoenix, AZ 85063.

NEED ODD or curious 651, 703, C11, C23, CE1, CE2, 771, 832, 833, and 834. Write first. Larger pieces of other EFOs. Advise your needs. James Dysarczyk, Apt. B270, 28601 Imperial Drive, Warren, MI 48093.

WANTED: Unusual worldwide perforation varieties: 1934 U.S. and G.B. Christmas seals on or off cover; and USPS markings, "body bags," printed letters, etc., explaining delays in the mail. Will buy or advise your needs. John M. Hotchner, P.O. Box 1125, Falls Church, VA 22041.

WANTED: Imperf coils, 1891a, 18c Flag, PS6, Pl# 5, XF-NH, \$100; 1897Ae, 2c Locomotive, PS6, Pl# 8 or 10, XF-NH, \$225; 2281a, 25c Honeybee, PS6, Pl# 1 or 2, XF-NH, \$125. Jerry Grove, 5 DSCS, PSC 279, Box 152, APO AP 96552.

WANTED: 1938 Presidential misperf errors. Send photocopy or description and price. Thomas Smith, EFOCC #454, P.O. Box 23149, Phoenix, AZ 85063.



SCHIFF AUCTIONS

Buyers, Auctioneers & Appraisers of U.S. &
Worldwide Stamps & Postal History since 1947.

AUCTION SCHEDULE

Auction 220
July 31-August 1, '92
Collectors Club
New York City

Auction 221
September 1992
Collectors Club
New York City
Consignments now
being accepted

SELLING STAMPS, COVERS & COLLECTIONS:

We can help you decide the best method of sale for your stamps & covers: Outright, Private Treaty, or by consigning to our Public Auctions. Contact us before sending. Include your address & telephone number(s).

	N.America	Overseas
CATALOGS	Address	Address
1 Year with Prices Realized.....	10.00	18.00
1 Year Catalogs Only	7.50	15.00
1 Catalog with realizations	1.50	2.50
1 Catalog Only	1.00	2.00

Catalogs Free when picked up at our Office.

JACQUES C. SCHIFF JR., INC.

195 Main St., Ridgefield Park, NJ 07660 USA
Telephone: 201-641-5566 from NYC 662-2777

Licensed & Bonded Auctioneers

Official Auctioneer

WORLD COLUMBIAN



STAMP EXPO '92
MAY 22-31, 1992 - CHICAGO



QUALIFIED
AUCTIONEER

In Honor of the Olympics--

Just because it's an Olympic year, we thought you might like to see a wonderful Polish invert issued to honor the Olympic Games in 1956. It's Poland Scott 751 (var.), 20gr. There are 14 known.



Twenty years ago, in 1972, the United States also issued an Olympic Games series. There is a minor plate flaw-- a broken red Olympic ring-- on the 6c Bicycling, and no flaws in the 15c Running or the 11c airmail Skiing. But Scott 1461, the 8c Bobsledding, is occasionally found in the state illustrated below: minus its "US 8c" and "XI OLYMPIC WINTER GAMES SAPPORO 1972." According to Dr. Stanley Segal, this omission is caused by an excess of solvent selectively washing the black ink out of the lettering's shallower etched areas on the printing cylinder. That makes the stamp a freak, rather than a major error, as the black Olympic ring and two black bobsledders remain.



NEW JOHN HOTCHNER'S FIRST BOOK!



As one of today's prolific writers and philosophers in philately, John has amassed 17 years of columns such as: *America's Freaky Stamps*; *Exploring*; *Trouble on Stamps*; and *Perfection?*; including some 70 other classics to be!

Under the pseudonym of **Anon•Y•Mouse**, John penned these insights of our hobby for the *Virginia Philatelic Forum*, and now these entertaining and enlightening columns are available for your reading enjoyment too!

Order Today!

**21st Century
Stamp Company**

DEPT. E1, P.O. BOX 1987
MELBOURNE, FL 32902-1987

\$7.95

(POST PAID)
FL + 6% sales tax
\$11.45 foreign

"BULK ORDER DISCOUNT RATES FOR STAMP CLUBS"

President-Elect Cotter on Philatelic Show 93--

Jim Cotter plans to make Philatelic Show 93, to be held in Boxborough, MA April 30-May 2, 1993, the venue for a superb national convention of the EFO Collectors' Club. As Secretary and Vice Chairman for the show, he's in a position to make it happen.

He already has commitments for thirty frames of exhibits, and is pursuing six other exhibitors suggested by John Hotchner. And he's had preliminary talks regarding EFO seminars and an EFO auction.

If you wish to exhibit, give a seminar on errors, freaks and oddities, or otherwise participate in Philatelic Show 93, contact Jim Cotter, P.O. Box 214, Stoneham, MA 02180; telephone 617-387-6903.

Look Ahead To '93--

The Northeast Federation of Stamp Clubs and
the Errors, Freaks and Oddities Collectors' Club will sponsor

PHILATELIC SHOW 93

BOXBOROUGH, MASSACHUSETTS

30 April to 2 May, 1993

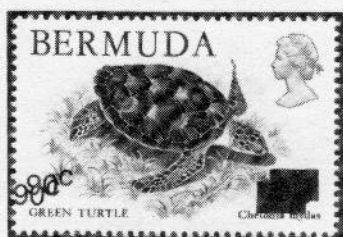
BOXBOROUGH HOST HOTEL, Exit 28 off I-495

Bourse hours: Friday, 30 April, 11 a.m. to 6 p.m.

Saturday, 1 May, 10 a.m. to 6 p.m.

Sunday, 2 May, 10 a.m. to 4 p.m.

For further information, contact the Club secretary, CWO Jim McDevitt,
1903 Village Road West, Norwood, MA 02062-2524; Telephone 617-769-6531.

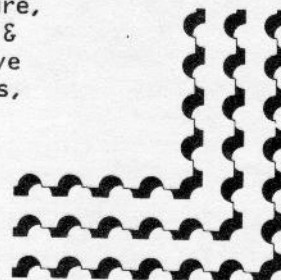


GREAT waiting B ERRORS

For 20 years we have been the foremost European
dealers in freaks and errors. Our unrivalled
expertise is backed by the most extensive stock.

The very fact that we have handled more G.B. and
Commonwealth major errors than any other dealer
only goes to prove that it pays to contact B. Alan.

To receive a full colour brochure,
copies of our latest newsletter &
full details of our comprehensive
British & Topical error services,
Send \$2 to the address below.



27 Maiden Lane, London WC2E 7JS.
Tel: 071 836 2391 or 071 836 3780
ENGLAND

BRIAN REEVE,
B. ALAN LTD.

Auction 61-- Closing Date, July 31, 1992

5% Buyers' Premium

UNITED STATES

A. Color Shift EFO's:

Lot	Scott	Pg	Description	Min Bid
1	294	A	OG w/vignette shifted up & to left.	5.00
2	1041	A	OG Blk of 4 w/red shifted rt 1mm.	9.00
3	1190	A	2 - OG Pairs w/dark blue shifted.	17.50
4	1374	A	OG Rt Margin w/brown & blue shifted right 5mm.	20.00
5	1423	A	OG/H With color shifted right.	10.00
6	1434a	B	MNH Pitt blk 4 w/black shifted down.	12.50
7	1455	B	MNH Zip blk 4 w/intaglio black shifted 6mm right.	17.50
8	1473	A	MNH Single w/color misregistration.	8.00
9	1474	A	MNH w/brown progressively shifted up.	12.50
10	1500	B	MNH Pitt blk w/intaglio lettering shifted down & right.	20.00
11	1504	A	MNH w/engraved colors shifted rt.	8.00
12	1529	A	MNH w/black shifted down 3mm & 2mm to right.	16.00
13	1568a	B	MNH Margin blk of 4 w/2 pt # - red color misregistration.	15.00
14	1569a	B	MNH Pair-color misregistration.	10.00
15	1580	A	MNH Tan shifted to left 1 3/4mm - Gum faulty.	17.50
16	1610	A	MNH Intaglio brown shifted 6mm down.	12.50
17	1610	A	MNH Intaglio brown shifted up 4mm.	10.00
18	1610	B	MNH Blk of 4 - intaglio brown shifted down 5mm.	30.00
19	1727	B	MNH Blk of 4 w/orange&yellow bkgrnd shifted down.	15.00
20	1757	B	MNH Major color misregistration w/ litho colors shifted to LR.	15.00
21	1759	B	MNH Zip blk of 4w/color misreg.	12.00
22	1798b	B	MNH Blue & red misregistered on grey background.	5.00
23	2014	A	MNH Black shifted up & left.	8.00
24	2201a	A	MNH Full booklet- black missing.	70.00
25	2281b	A	MNH Engraved black omitted.	60.00
26	2399a	A	MNH Gold omitted.	18.00
27	2419	B	MNH Grey shifted down 1 1/2mm & to right 1mm.	12.50
28	C81	B	MNH Zip blk of 4-black shifted up into USA.	15.00
29	C81	B	MNH Misregistered blk of 6-engraved black/blue shifted 2mm down & left.	18.00
30	C86	A	MNH Black shifted down 4mm out of tablet.	25.00
31	C92a	B	MNH Plate block with litho shifted diagonally 4mm.	45.00
32	C92a	B	MNH Intaglio shifted up 5mm.	15.00
33	C96a	B	MNH Bottom margin pair-intaglio shifted down 5mm.	25.00
34	589	A	3-MNH Blks of 4 w/different black shifts.	20.00
35	J90	A	MNH Blk of 4-black shifted up.	6.50
36	J93	A	MNH Blk of 4-black shifted rt & dwn	6.50

B. Perf Shift EFO's:

				Min Bid
37	247	A	MNH Bottom row of perfs shifted down below BEP label 4mm.	70.00
38	499	A	MNH Block of 4 center horiz. perfs shifted down as blind perfs-looks imperf.	40.00
39	530	B	OG/H Top row of perfs shifted up 14mm.	35.00
40	538a	A	OG/HR Vert pair, imperf between.	22.00
41	632	A	MNH Misperf blk 4 w/2-way shift 2mm up, 3mm left.	12.00
42	634	A	MNH Misperf w/pit #, Type 1.	6.00
43	703	A	MNH Margin pair misperfed on diagonal (0-3.5mm).	10.00
44	742	A	MNH Horiz perfs shifted down 3mm & miscut down.	10.00
45	747	A	MNH Blk of 6 w/horiz perfs on diag.	15.00
46	803	A	MNH Progressive misperfed of vert perfs to the outside.	10.00
47	805	A	MNH Blk 4-appears imperf horiz due to blind perfs.	6.00

48	805b	A	MNH Blk 6 precancel; bottom pair imperf between, top pr w/blind perfs.	7.50
49	832	B	Used blk of 6 vert perfs shifted 4mm to left.	14.00
50	832	B	OG Blk of 4-vert perfs to left 6mm; Cut to shape of stamps.	20.00
51	899	C	MNH Precancel horiz pr misperfed 6mm.	15.00
52	899b	C	MNH Rare imperf precancel horiz pair.	25.00
53	1015	B	MNH Vert pr misperfed horiz-2mm down.	7.50
54	1036	B	MNH Blk of 4 w/horiz perfs up 3.5mm.	10.00
55	1132	A	MNH Misperf single 5mm left.	7.50
56	1158	B	MNH Bot margin w/horiz perfs shifted up to make design change.	6.00
57	1278	A	MNH Misperf left 7mm.	6.00
58	1281	A	MNH Blk of 4-two way misperfed.	16.00
59	1282	B	MNH Misperf blk of 4 w/perfs shifted up 2+mm.	8.00
60	1282	B	MNH Misperf blk of 4 w/shifted 3.5mm down.	9.00
61	1283	A	MNH Single w/perfs shifted down 3mm.	6.00
62	1283B	C	MNH Misperf blk of 6 w/perfs shifted left 1.5mm.	9.00
63	1283B	C	MNH Exceptional misperfed with plate # and part of EE's well inside of stamp.	45.00
64	1285	C	MNH Misperf blk of 6 w/perfs shifted up 4mm.	8.00
65	1286	C	MNH Misperf blk 4 w/perfs shifted up 2.5mm.	12.00
66	1286	C	MNH Plate block misperfed with plate # inside of stamp.	25.00
67	1292	C	MNH Plate block misperfed with plate # completely inside.	30.00
68	1294	C	MNH Misperf blk of 6-perfs shifted left 3mm.	12.00
69	1297b	B	MNH Misperf & miscut vert-coil pr; Shifted 3mm up.	10.00
70	1299b	C	MNH Imperf pr with small crease.	18.00
71	1304c	C	MNH Line strip of 3 misperfed.	12.50
72	1305a	C	MNH Imperf strip of 4.	115.00
73	1305c	C	MNH Misperfed line strip of 4.	45.00
74	1305E	C	MNH Line strip of 3 misperfed 50%.	12.50
75	1338	C	MNH Block of 4-6mm horiz. perf shift down-interpane gutter attached.	20.00
76	1338	C	MNH ME Blk of 4 w/horiz. perfs shifted up 6mm.	15.00
77	1338D	C	MNH Misperf single - shifted left 6+mm.	5.00
78	1338D	C	MNH Single with imperf on margin.	6.00
79	1356	C	MNH 2-way misperfed blk 4; 3+mm to right & 2mm up.	15.00
80	1369	C	MNH Zip blk of 4 w/top horiz row of perfs shifted up 3mm.	6.00
81	1393	C	MNH Blk of 4 w/horiz. perfs shifted up 3mm creating design change.	15.00
82	1419	C	MNH Blk of 4 w/perfs down 2mm.	10.00
83	1424	C	MNH Blk of 4 w/perfs shifted 3mm to right & on slight angle.	12.00
84	1431	C	MNH Zip single misperfed 2mm left.	7.50
85	1436	C	MNH Margin single misperfed 3mm left.	7.50
86	1436	C	MNH Margin pair misperfed 3mm left.	12.00
87	1436	C	MNH Blk of 6 misperfed on angle 3mm to left.	27.50
88	1471	D	MNH Vert strip of 5 w/perfs shifted progressively down from top to bot.	15.00
89	1472	C	MNH Horiz. misperfed w/design change.	10.00
90	1476	C	MNH Blk of 4 misperfed 3mm up.	12.00
91	1476	C	MNH 2-way misperfed; 3mm up & right.	7.50
92	1485	C	MNH M.E. Single misperfed 4mm right.	6.00
93	1488	D	MNH Strip of 5 w/horiz. perfs on angle.	17.50
94	1496/97	D	MNH Blk of 4 w/missing perfs.	5.00
95	1500	D	MNH Blk of 4 misperfed 2mm right.	10.00
96	1507	C	MNH Single w/2-way misperfed 5mm left.	15.00
97	1510	D	MNH Blk of 6 w/perfs shifted 3mm left.	15.00
98	1519a	J	MNH Imperf pair.	20.00
99	1520	E	MNH Coil pair misperfed 7mm right.	10.00
100	1543/46	D	MNH Blk of 4 w/perfs down 3mm.	12.00
101	1563	D	MNH Blk of 4 w/perfs shifted up 2mm.	13.00
102	1582	D	MNH ME Blk of 6 misperfed 6mm left; Inscription inside stamp.	25.00
103	1591	C	MNH Blk of 4 w/vert perfs 10mm to rt.	14.00
104	1592	D	MNH ME Blk of 6 misperfed 4mm w/inscription inside stamp.	30.00
105	1592	D	MNH Top margin blk of 4 w/horiz. perfs shifted down 5mm.	10.00

106	1592	D	MNH Zip blk of 6 w/vert perfs progressively shifted to right.	25.00
107	1597a	D	MNH Imperf margin blk of 4.	35.00
108	1597a	D	MNH Imperf blk of 4.	30.00
109	1603	E	MNH ME Blk of 6 misperfed 6mm w/ inscriptions inside of stamps.	35.00
110	1605	D	MNH Zip blk of 4 w/vert perfs shifted 5mm to left.	20.00
111	1615c	E	MNH Imperf coil pair.	12.50
112	1618	E	MNH Coil pair w/5mm perf shift.	2.50
113	1683	C	MNH Misperfed 4mm down w/design change.	18.00
114	1700	F	MNH Zip blk of 4 w/horiz perfs shifted down 5mm.	15.00
115	1726	D	MNH Zip blk of 4 misperfed left on slight angle.	20.00
116	1735	F	MNH Zip/ME Blk of 12 misperfed diagonally & horizontally.	35.00
117	1735	E	MNH Blk of 6 w/horiz perfs on angle; Full margin perfs at bot. of top pair.	30.00
118	1748a	F	MNH w/set of perfs shifted into margin 4-5mm.	12.50
119	1748a	F	MNH Zip blk of 4 w/horiz perfs on angle.	6.00
120	1749/52	F	MNH Blk of 4 misperfed 2.5-3mm right.	14.00
121	1752a	F	MNH Blk of 4 w/vert perfs on angle.	15.00
122	1756	E	MNH Blk of 4 w/perfs 4mm down.	14.00
123	1756	F	MNH Zip blk of 4 w/perfs down 4mm.	15.00
124	1757	G	MNH Misperf w/perfs down 4.5mm.	25.00
125	1758	G	MNH Ptt blk of 4 w/horiz perfs on angle causing design change.	40.00
126	1764/7	G	MNH Ptt Blk of 12 w/perfs shifted down 3mm.	30.00
127	1813	E	MNH Misperfed line pair.	10.00
128	1833	F	MNH Blk of 4 w/perfs up 3.5mm.	12.50
129	1856b	D	MNH Blk of 4 imperf between.	6.00
130	1894	D	MNH Blk of 4 w/horiz perfs on diagonal & shifted down.	17.50
131	1895a	E	MNH Imperf pair.	7.50
132	1907	E	MNH Strip of 4 w/3+mm perf shift left.	10.00
133	1907	E	Same as lot #132.	10.00
134	2005a	E	MNH Imperf & miscut pair.	100.00
135	2015	F	MNH Blk of 4 w/perfs shifted up 3mm on slight angle.	14.00
136	2015	E	MNH w/horiz perfs shifted down 20mm.	20.00
137	2035a	D	MNH Blk of 4 w/8mm perf shift.	13.00
138	2051a	F	MNH Blk of 4 w/horiz perf shift down.	30.00
139	2066	E	MNH Blk of 4 w/perfs shifted up 3mm.	15.00
140	2075	D	MNH Horiz pair w/vert perfs on angle.	17.50
141	2112a	E	MNH Imperf strip of 4.	80.00
142	2115	E	MNH Imperf & miscut coil pair.	20.00
143	2115a	E	MNH Imperf strip of 4 & imperf pair.	27.50
144	2130a	E	MNH Imperf strip of 4.	20.00
145	2130a	E	MNH Imperf Ptt strip of 6; Ptt #3.	115.00
146	2138a	E	MNH Imperf strip of 5.	25.00
147	2204	F	MNH Blk of 4 misperfed 3-4mm on slight angle.	12.50
148	2243a	F	MNH Ptt # Blk of 4 w/vert perfs shifted left 7mm.	30.00
149	2265	E	MNH Coil pair w/8mm perf shift.	7.00
150	2281b	E	MNH Imperf coil pair.	23.00
151	2440	G	MNH Vert pair w/2-way misperf.	25.00
152	2523a	E	MNH Imperf coil pair.	25.00
153	C39	F	MNH Misperfed block of 4.	3.00
154	C56	G	MNH Misperfed single w/design change.	15.00
155	C78	F	MNH Blk of 4 w/4mm perf shift up.	10.00
156	C82	E	MNH Coil pair misperfed 3mm left.	7.50
157	C82a	E	MNH Imperf & miscut coil pair.	125.00
158	C83a	E	MNH Imperf pair.	75.00
159	C88	G	MNH Margin blk of 4 w/vert perfs shifted 3mm to right.	10.00
160	C88	G	MNH Ptt blk of 4 w/vert perfs shifted 5mm to right.	16.00
161	C90	G	MNH Zip blk of 4 w/vert perfs 3mm left.	15.00
162	C104a	F	MNH Zip blk of 4 w/vert perfs shifted 15+mm to right.	55.00
163	E15	E	MNH Misperfed w/partial plate #.	3.00

C. Miscut Coil EFO's:

				Min Bid
164	599/a	H	Used miscut coils w/partial plate#.	2.00
165	839	H	OG Miscut w/40% olt #23462.	8.00
166	846	H	OG Line strip of 5 w/10% ptt# 22024.	12.50
167	1054	H	Used line strip of 4 w/partial ptt#.	3.00
168	1304	H	MNH Miscut line pair w/5% ptt #.	4.00
169	1903a	H	MNH Line strip of 6 miscut w/EE markings & no ptt#.	15.00
170	1903a	H	MNH Line strip of 6 miscut w/no ptt#.	12.00

171	2132	H	MNH Line strip of 5 miscut w/no ptt#.	10.00
172	2132	H	2 - MNH Line strips of 5 miscut w/100% plate #'s 1 & 2 at top.	10.00
173	C41	H	2 - MNH Line strips of 5 miscut w/35% ptt# 24116 & 30% ptt# 24117.	25.00
174	C52	H	MNH Line strip of 7 miscut 2.5mm rt.	25.00

D. Inking EFO's:

				Min Bid
175	1001	D	MNH Margin blk of 4 w/ink stains across top stamps.	8.00
176	1035	G	2-MNH Ptt blks of 4; 1 underinked & second overinked.	7.50
177	1112	G	MNH Wet print single w/smear.	6.00
178	1191	H	OG/H Blk of 4 w/wiping smear.	12.50
179	1283	H	MNH Blk of 4 w/rejection marking.	18.00
180	1338F	H	MNH Margin strip of 3 with spray-on rejection marking.	15.00
181	1419	H	MNH w/"doughnuts" on upper stamps.	5.00
182	1469	I	MNH Margin blk of 6 w/smear at top.	10.00
183	1527	I	MNH Zip blk w/"Doctor blade line" and misperfed on angle.	15.00
184	1548	I	MNH Ptt blk of 4 w/"doughnuts".	5.00
185	1726	I	MNH Blk of 4 w/10+mm of margin stamps not printed.	15.00
186	1726	I	MNH Blk of 4 w/red ink smear.	12.50
187	1926	H	MNH Ptt blk of 4 w/vert ink stains.	7.50
188	2114	H	MNH Blk of 6 w/cleaning solvent smear.	15.00
189	2115	E	MNH w/black smear due to poor wiping.	15.00
190	2117	I	MNH Zip blk of 4 having paper soaked w/cleaning fluid & blueing entire design.	25.00
191	2240	I	MNH w/"Doctor blade line" & smear affecting 5 stamps.	7.50
192	2240	I	MNH w/black smear affecting 6 of 12.	5.00
193	2275	I	MNH w/D press blue smear affecting 8.	15.00
194	2280	E	MNH w/third stripe down 'blue'.	5.00
195	2336	I	MNH w/D press smear across top.	12.50
196	2578	N	MNH Full pane w/major solvent smear affecting 40 of 50 thru color change.	75.00
197	C86	I	MNH Ptt blk of 4 w/intaglio black smear.	10.00
198	J81	I	MNH Blk of 10 w/dry print at bottom to normal at top.	15.00

E. Booklet EFO's:

				Min Bid
199	634d	J	Full bklt w/all 4 panes slightly misperfed vertically.	5.00
200	1036a	K	MNH LLBklt pane w/90% ptt# 26469.	15.00
201	1036a	K	MNH LL Bklt pane w/60% ptt# 26516.	8.00
202	1036a	K	MNH UL Bklt pane w/75% ptt# 26955.	12.00
203	1036a	K	MNH UL Bklt pane w/50% ptt# 27215.	6.00
204	1036a	K	MNH LL Bklt pane w/50% ptt# 26468.	6.00
205	1036a	K	MNH LL Bklt pane w/85% ptt# 26033.	12.50
206	1213C	K	MNH Bklt pane miscut vertically.	6.00
207	1213C	K	MNH Type 3 UL bklt pane w/60% ptt# 28345; Tagged.	6.00
208	1213C	K	MNH Type 3 LL bklt pane w/50% ptt# 28491.	6.00
209	1213C	K	MNH Type 3 UL bklt pane w/95% ptt# 28539.	15.00
210	1278a	K	MNH Miscut bklt pane 4mm to bottom.	15.00
211	1278a	K	MNH UL Bklt pane w/65% ptt# 32905.	7.50
212	1280c	K	MNH LL Bklt pane w/60% ptt# 32967.	8.00
213	1284b	K	MNH Bklt pane cut wide to left.	20.00
214	1284c	K	MNH LL Bklt pane w/75% ptt# 29565.	15.00
215	1284b	K	MNH Bklt pane miscut vertically.	10.00
216	1284c	K	MNH Bklt pane w/50% ptt# 29556.	6.00
217	1395c/d	K	MNH Full bklt miscut 3mm horizontally.	10.00
218	1395b	K	MNH Bklt pane w/85% ptt#.	10.00
219	1395b	K	MNH UL Full bklt w/40% ptt#s 32910 & 32911.	12.00
220	1595d	K	MNH LL Bklt pane w/80% ptt# 37345 due to engraving error.	10.00
221	1737a	K	Full bklt w/both panes misperfed 5.5mm to right.	25.00
222	1893b	K	MNH imperf vertically pane.	60.00
223	1949a	K	Full bklt ptt# 10 w/both panes misperfed 12.5mm to left.	30.00
224	1949a	K	Full bklt ptt# 17 w/reversed assembly.	30.00
225	1949a	K	MNH Bklt pane misperfed 7mm right.	10.00
226	2276	K	Full bklt w/red stripes down 1.5mm.	35.00
227	2283a	L	Full booklet miscut.	25.00
228	2427a	L	Full bklt w/second pane only 6.5mm wide with margin. Very interesting!	20.00
229	2566a	L	Full bklt w/purple bkgmd disappearing.	55.00
230	C25a	L	MNH UL Bklt pane w/25% ptt# 22980.	8.00
231	C64b	L	Used bklt pane w/60% ptt# 27375.	7.50

232	C46b	L	MNH Bklt pane miscut w/EE bars.	15.00
233	C78a	L	MNH Bklt pane miscut & misperfed.	12.50
234	C78a	L	MNH Bklt pane miscut horizontally.	10.00
235	C78a	L	Full bklit w/99% pit# 33486, 95% pit# 33485 & 60% pit# 32966. All LL.	20.00

F. Plate Varieties/Misc. EFO's:

				<u>Min Bid</u>
236	583	J	LH Bklt of 4 w/guttersnipe.	12.50
237	632	E	Used strip of 3 w/guttersnipe.	7.50
238	682	H	MNH w/fold under.	20.00
239	703	NP	OG Full pane w/two preprint diagonal creases affecting gum & print. Perf seps.	40.00
240	720	J	MNH Bklt of 4 w/guttersnipe.	15.00
241	741	E	Used w/crease affecting perfs.	10.00
242	742	J	OG Fold-under w/crazy perfs.	40.00
243	742	J	OG Pit bklit fold-over w/crazy perfs.	25.00
244	725	J	OG UR Corner fold-over w/crazy perfs.	20.00
245	726	J	OG UR Corner foldover w/crazy perfs.	20.00
246	774	J	OG Pit strip of 6 foldunder w/crazy p's.	15.00
247	807	J	OG Bklt of 6 w/taped double paper.	13.00
248	807a	J	OG UL Fold/miscut w/extra paper.	10.00
249	830	H	OG Guttersnipe pair w/21mm of stamp from adjoining pane.	50.00
250	839	H	OG Fold/miscut w/wing at bottom.	20.00
251	937	N	MNH Pit strip of 20 w/6 ghost pit#s.	15.00
252	1036	i	MNH Bklt of 4 guttersnipe w/11mm of adjoining pane.	25.00
253	1280	J	MNH Gutter zip bklit of 4.	10.00
254	1281	H	MNH Misperfed & guttersnipe.	12.50
255	1359	H	MNH w/major offset.	15.00
256	1557	J	MNH w/doubled plate #.	5.00
257	1576	H	MNH w/major multicolor offset.	15.00
258	1581	H	MNH Vert strip of 6 w/double paper due to paper mill splice.	20.00
259	1709a	N	MNH Pit bklit of 10 w/fold & crazy perfs.	65.00
260	1735	J	MNH Pit bklit of 9 w/crazy corner fold perfs causing pit# to be inside stamp.	60.00
261	1748a	J	MNH Bklt of 4 w/foldover & crazy perfs.	15.00
262	C23	J	2 - OG Singles w/corner foldunders.	25.00
263	JQ2	H	OG Single w/offset.	30.00
264	---	H	MNH Test strip of 4; 1938 Type 2.	2.00
265	---	J	OG Test Bklt pane; 320 or 400 format.	35.00

G. EFO Stamp Mixtures:

				<u>Min Bid</u>
266	MIX	L	20 - OG Three cent guttersnipe bklts.	20.00
267	MIX	L	10 - OG Def. guttersnipe singles.	10.00
268	MIX	L	15 - OG Comm. three cent guttersnipe singles.	10.00
269	MIX	L	11 - Used EFO's on cut squares.	20.00
270	MIX	L	2 - Misperfed singles; #1690 & #1139.	5.00
271	MIX	L	7 - MNH EFO's; Perf/color shifts, etc.	15.00
272	MIX	L	16 - MNH EFO's; Includes Bklt panes.	50.00
273	MIX	L	3 - OG Postage dues w/shifted values.	20.00
274	MIX	L	8 - MNH/Used EFO's; Donation lot!!	OPEN
275	MIX	L	3 - Used misperfs; #s 2074, 2102 & 2112.	3.00
276	MIX	L	4 - Used w/partial pit#s; Sc#1057.	3.00
277	MIX	L	5 - Used w/partial pit#s or miscuts; Sc# 807 & 842.	3.50
278	MIX	L	6 - Used w/partial pit#s; Sc# 1036/58.	3.50
279	MIX	L	3 - Used w/partial pit#s; Sc# 737.	3.00
280	MIX	L	2 - Used w/partial pit#s; Sc# 776 & 817.	2.00
281	MIX	L	4 - Used w/partial pit#s; Definitives.	2.00
282	MIX	L	5 - Used BOB w/partial pit#s.	3.50

H. Entireties, Covers & Postal Card EFO's:

				<u>Min Bid</u>
283	64	M	Pink variety on cover.	250.00
284	634d	M	Miscut single on post card.	2.00
285	367	M	Bisect use; Watertown, MA., 1910.	50.00
286	610	M	Bisect use; Phila/Norfolk RPO; 1924.	30.00
287	634	M	Type 1 partial plate on cut square.	5.00
288	634a	N	Type 2 on cover.	50.00
289	841	N	U532 FDC w/partial pit single.	5.00
290	MIX	N	4 Misperfs on commercial covers.	10.00
291	UX44	M	2 Copies w/Litho "doughnut".	5.00
292	---	NP	Albino entire; 1916-32 period.	10.00

I. Foreign EFO's:

					<u>Min Bid</u>
Armenia					
293	---	M	NG as issued w/quadruple frame print.		50.00
294	---	M	4-NG as issued copies miss. vignettes.		30.00
295	---	M	OG w/doubled vignette.		25.00
296	---	M	NG as issued w/doubled vignette.		25.00
297	---	M	NG as issued w/blue frame inverted & printed on reverse.		20.00
298	---	M	NG as issued w/missing vignette.		25.00
299	---	M	NG as issued w/inverted '40' frame printed on top of '50' frame.		40.00
India					
300	---	M	MNH Strip of 3 w/preprint paperfold.		10.00
301	---	M	MNH Misperfed single.		5.00
302	---	M	MNH Bklt of 4 w/preprint paperfold.		7.50
303	---	M	MNH Single w/yellow color shift.		6.00
304	---	M	MNH Single w/2-way misperfed.		7.50
305	---	M	MNH Revenue single w/complete offset.		7.50
306	---	M	MNH strip of 4 w/preprint paper crease.		8.00
307	---	M	MNH Bklt of 8 w/preprint paperfold.		15.00
308	---	M	MNH Pair misperfed horizontally.		7.50
309	---	M	MNH Single w/4mm preprint paperfold.		12.00
310	---	M	2 - MNH Misperfs.		6.00
311	---	M	MNH w/Overprint printed on reverse.		7.50
312	---	M	MNH Misperfed single.		6.00
313	---	M	2 - MNH w/Black litho color shift.		10.00
314	---	M	4 - MNH Misperfs; 1&2-way copies.		15.00

This ends the list of consignments received for inclusion in Auction #61. Please note that the following lots were not photographed (NP): #239 and #292.

I would like to thank the following members for donating material to our auction:

Ed Silver for Kerry Vandigraft --- Lot #274
John Tison Jr. --- Auction postage

Good Luck!!! -- Ed

Auction 59 Prices Realized

LOT	BID	LOT	BID	LOT	BID	LOT	BID
1	8	5	21	9	15	11	13
12	8.50	14	23	17	11	18	62.50
21	6	26	7	29	20	30	18
31	18	32	16	35	7	37	11
38	30	42	16	43	14	45	10
48	10	49	15	50	25	53	11
54	35	55	21	56	17	58	23.50
61	9	64	12	67	10	71	10.50
78	30	79	5	80	6.50	81	17
82	5	90	9	93	5	94	31
95	10	96	15	97	10	98	7.50
98	7.50	99	20	102	20	103	17.50
104	16	105	10	106	10	107	16
110	5	111	12	112	20	115	6.50
119	5	120	7	124	14	131	22
133	24	135	10	136	10	137	20
138	8	139	15	140	12	143	20
144	6	145	6.50	146	5	147	5
150	5	155	6	157	20	159	21
162	13	163	11	167	8	173	16.50
180	77.50	181	15	182	23.50	184	16
185	10	190	15	191	43	200	8
201	20	201	20	202	20	204	9.50
205	15	206	14	207	20	235	9
236	7.50	238	5.25	242	21	243	27.50
248	7.50	249	15	250	7.50	251	16.00

To members consigning material for upcoming EFO auctions:

I would like to provide a cutoff date for accepting consignments for placement in particular auctions. Please refer to the following dates while preparing your material for inclusion:

<u>Auction #</u>	<u>Journal Issue</u>	<u>Consignment Deadline</u>
62	August 1992	7 - 03 - 92
63	October 1992	9 - 04 - 92
64	December 1992	10 - 30 - 92
65	February 1993	12 - 31 - 92

Auction Page A



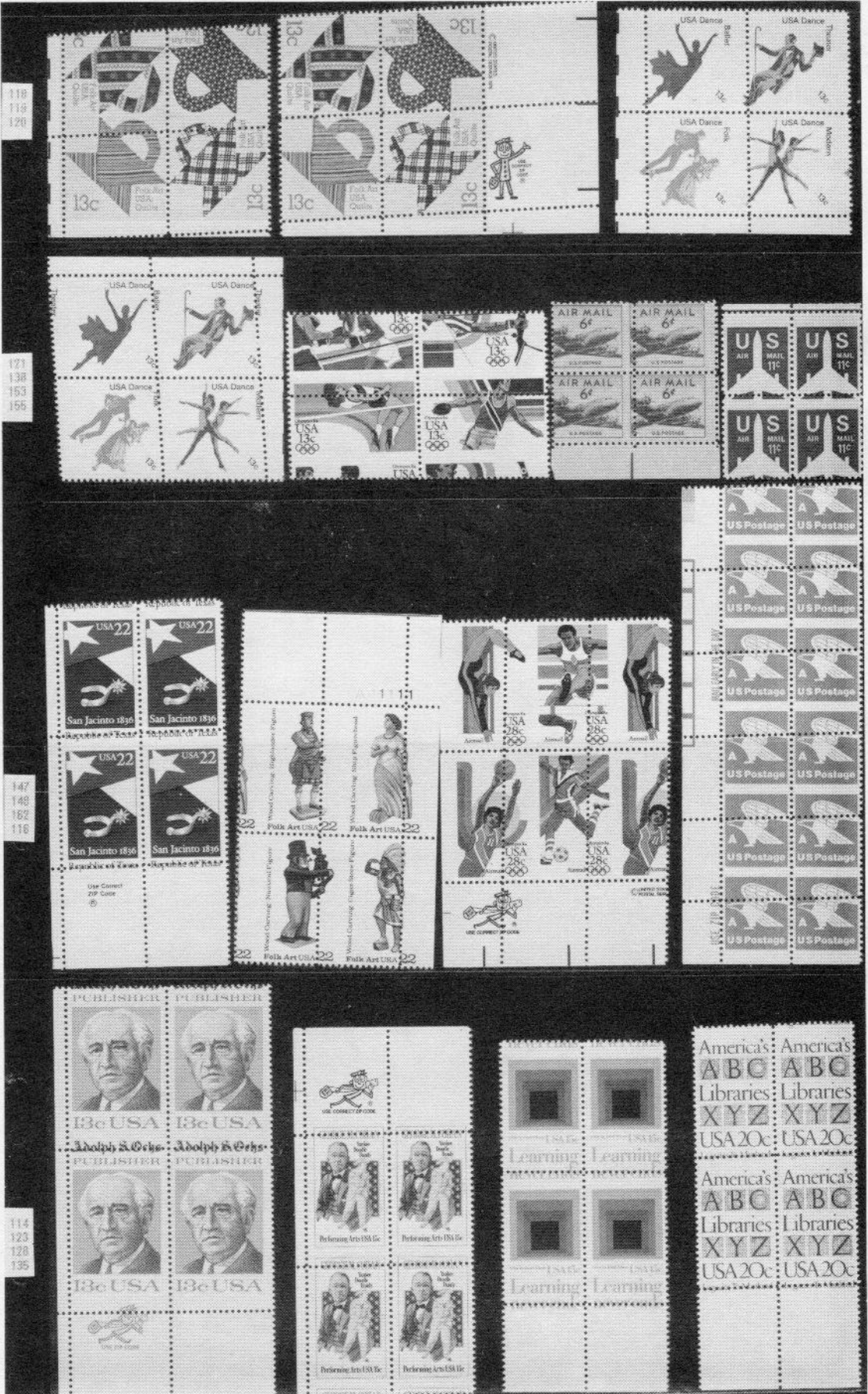
Auction Page B



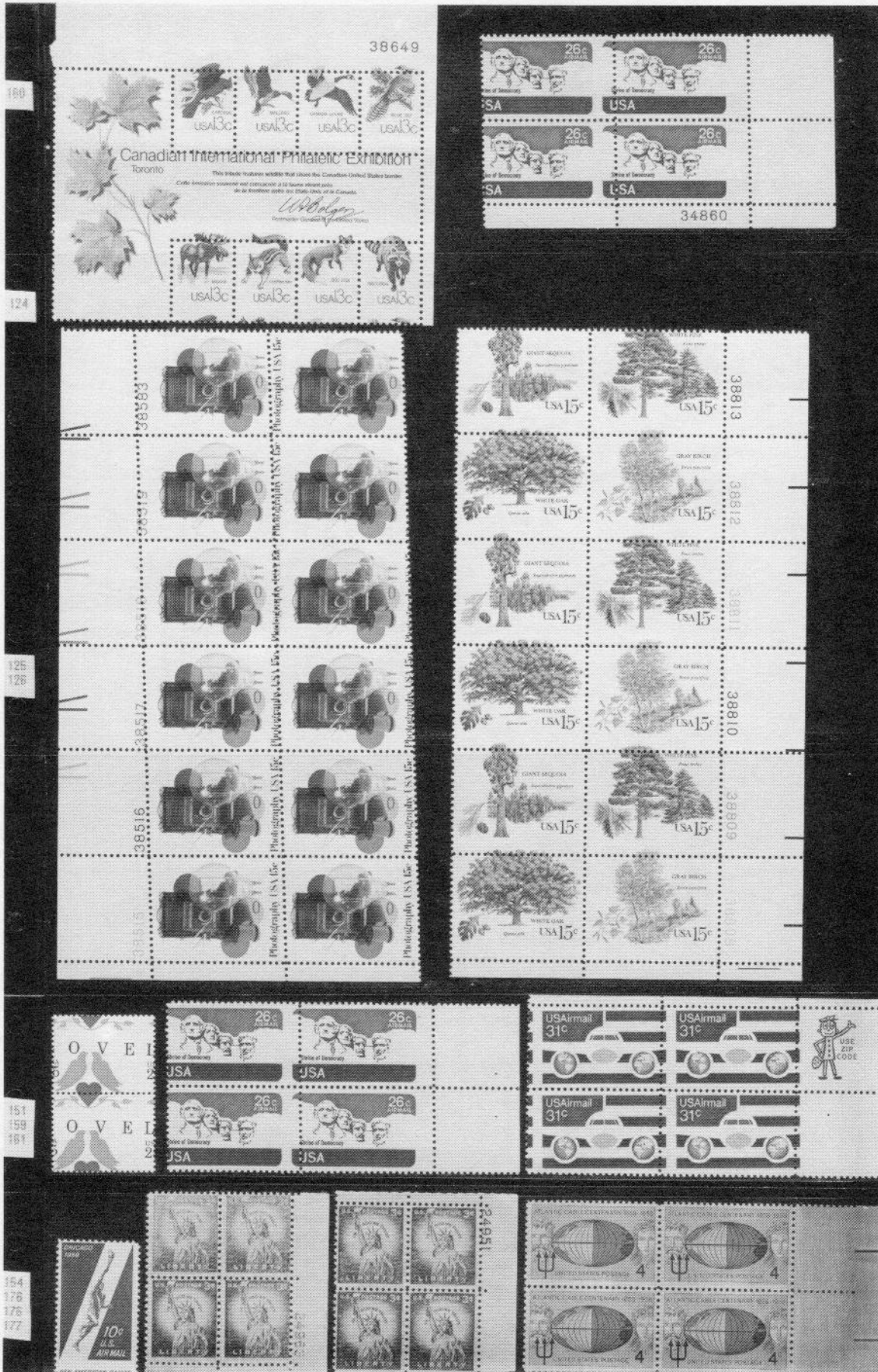
Auction Page C

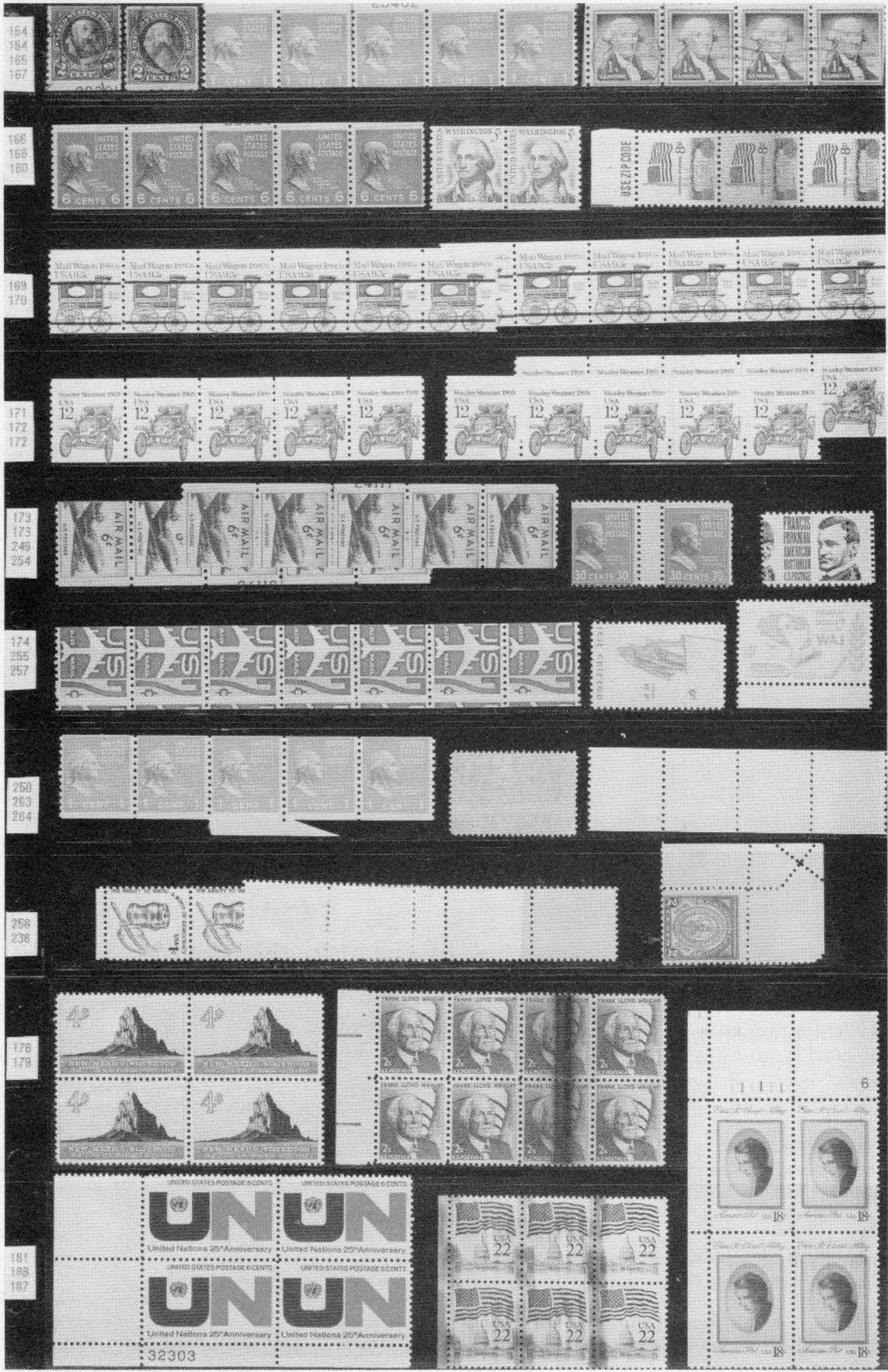




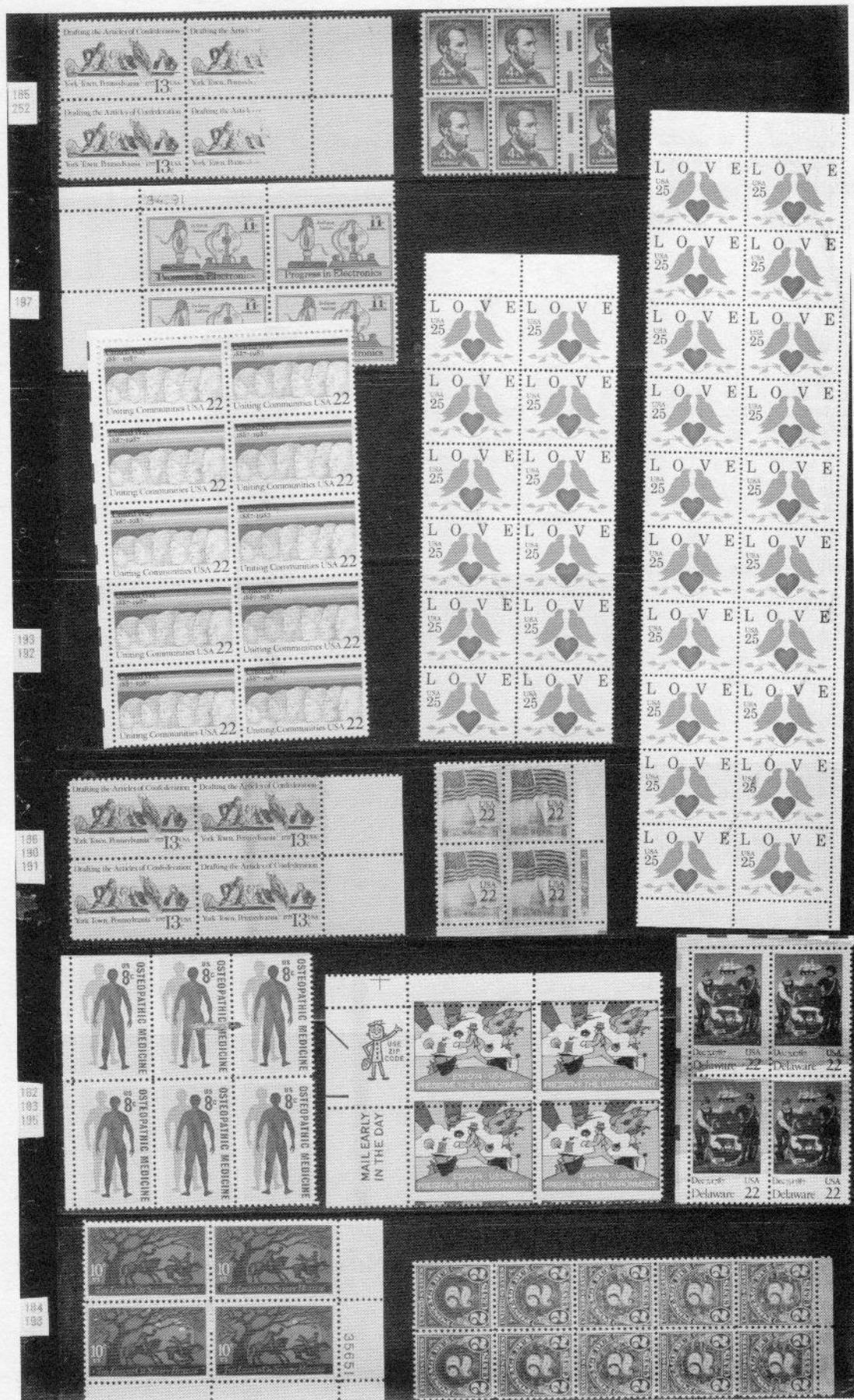


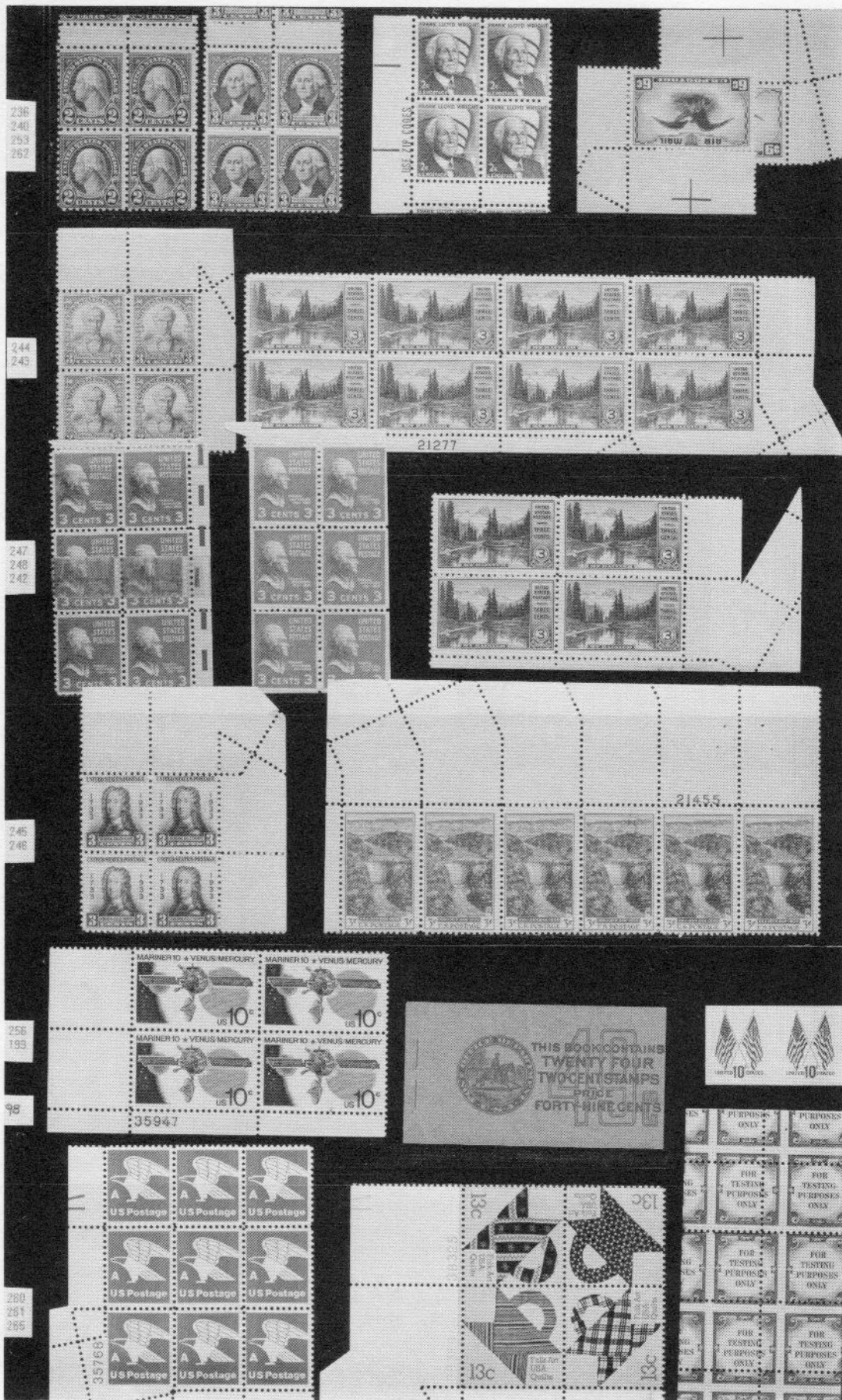
Auction Page G





Auction Page I

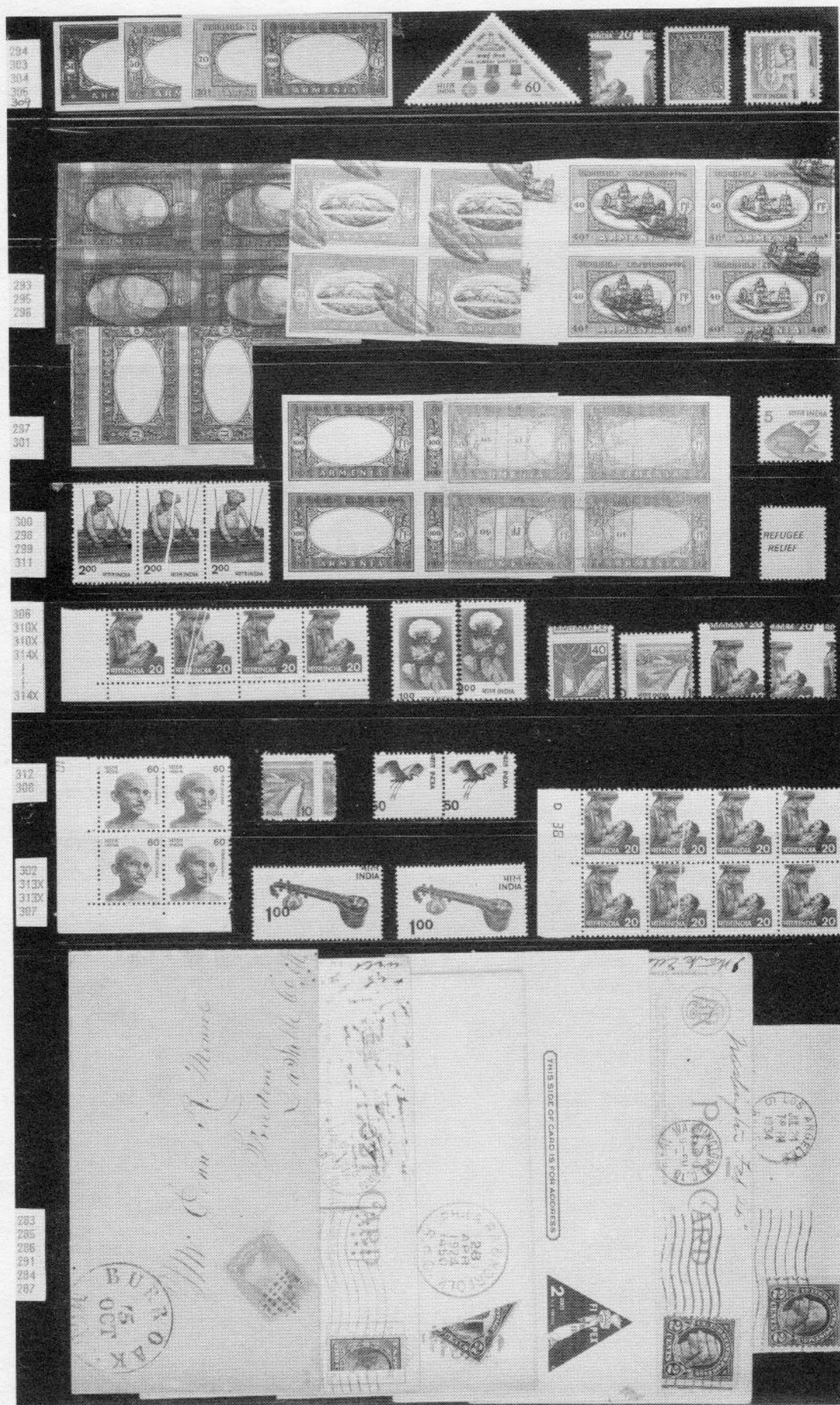








Auction Page M





<u>Consignor Name</u>	<u>Description of lot:</u>	<u>Country</u>	<u>Cat. #</u>	<u>LOT #</u>
<u>EFOCC #</u>		<u>Catalog Used</u> (If other than Scott)		
<u>Condition (circle)</u> NH OG LH RG H NG HR NG as issued HH Used				<u>Sale #</u>
<u>Centering (if applicable)</u> S FVF XF F VF AVE.				<u>Buyer #</u>
<u>Faults (beyond EFO properties)</u> Describe:				<u>Hammer</u>
INSTRUCTIONS: Fill-in all boxes with underlined headings. Leave the others blank. Attach your lot to front of form using glassine or other mount. Use separate rigid sheet for larger lots and attach completed form. Make sure it is easy for me to remove and reinsert lot/s. <u>Send your lots by registered or insured mail for your own protection.</u>				<u>Cat. Value</u>
				<u>Retail Est.</u>
				<u>Minimum Bid</u>
				<u>Donation</u>
EFOCC Auctions, Edward T. Close, 2 Elm Lane, Williamson, NY 14589				

jal 12/24/90

**EFOCC
AUCTION
BID
SHEET**

Name _____ EFOCC No. _____

Address _____ Phone (____) _____

City _____ State _____ Zip _____

**Closing
Date:**

July 31, 1992

5% buyer's premium
will be added to
your winning bids.

All bids with purchase
limits will be executed
in the order in which
they are listed.

Send completed bid
sheets to...

EFOCC Auctions
Edward T. Close
2 Elm Lane
Williamson, NY 14589

All postage costs will be charged to the bidder.

Please execute the following bids for me in the mail Auction. All bid sheets
must be signed.

Signature: _____

**OFFICE
USE ONLY**

Lot #	Bid	Lot #	Bid	Lot #	Bid	Lot #	Bid	Lot #	Bid
59									
265									

CHECK YOUR BIDS CAREFULLY!

Please limit my purchases to \$_____ (Limits less than \$25 will be respectfully declined.)

Non-members, you're invited to join--
Members, it's time for most to re-up--

Keep current on errors, freaks and oddities; complete the coupon below and mail it to Jim McDevitt with your check.

To: James McDevitt, EFOCC Secretary, 1903 Village Road, West,
Norwood, MA 02062-2524.

I enclose my check or money order to cover my membership in
the EFO Collectors' Club. This is for:

- ☐ New membership (\$13, U.S. and Canada; \$26 overseas)
- ☐ Renewal (\$12, U.S. and Canada; \$25 overseas)
- ☐ Life membership (\$210, U.S. and Canada; \$440 overseas.)

Name _____

Address _____

City _____ State _____

Country _____ ZIP or Post Code _____

J. E. McDevitt, 1903 Village Road, W.
Norwood, MA 02062-2524

Address Correction Requested

BULK RATE
U.S. POSTAGE
PAID
WOODBIDGE, VA
PERMIT NO. 70

This is the bimonthly
of the EFO Collectors' Club.

PLEASE EXPEDITE