

THE EFO COLLECTOR

A Publication of the EFO Collectors Club

APS Affiliate # 103

ATA Chapter # 94

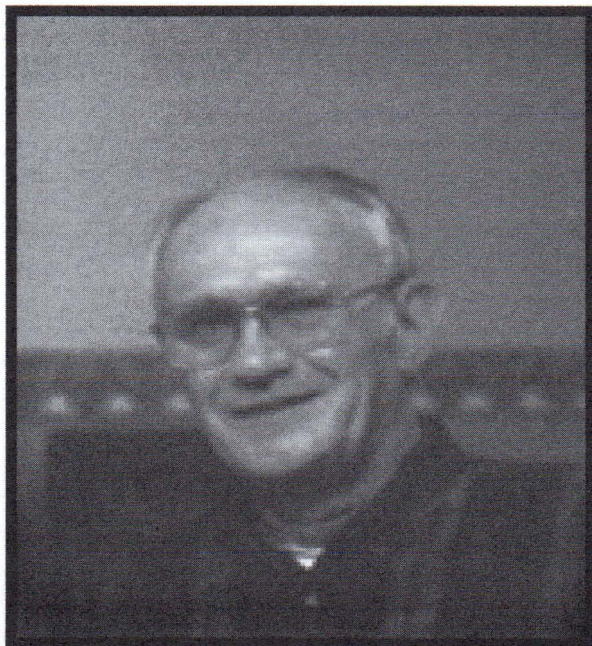
Volume XXIII - No. 2 {Whole Number 132}

Jul—Sep, 2003



ISSN 1099-7377

EARL K. McAFEE, 1931—2003



Join America's Premier Stamp
Collectors' Society

-- contact --

The American Philatelic Society
P. O. Box 8000,
State College, PA 16803
Tel: 814-237-3803
www.stamps.org

Inside This Edition

Page

Earl K. McAfee	1-3
Jacques Schiff, Jr. Auctions	4
Secretary's Report	5
Meet Joel Radin	6
Foldover Errors—Joe Monteiro	7-14
President's Report	15
EFOCC Member's Post	15
EFOCC Advertising Rates	16
EFOCC Officer Listing	16
Auction 96 Bidding Information	17-18
Auction Director Notes	19
Final Results of Auction 95	20
Auction 96 Descriptions	21-29
Auction 96 Lot Photographs	30-45
Auction Bid/Consignment Forms	46
Vice-Presidents Thoughts	2nd last 47

"To Err is Human – To Find is Divine"



IN MEMORIAM

Earl K. McAfee,

Charter Member Number 4 of the EFO Collectors Club
Chairman of the Booklet Study Group

On Monday, June 9, 2003, Earle departed his home in Champaign, Illinois to the heavenly bourse.

Earle was born December 10, 1931 in Paducah, Kentucky. He married Nila McCool on November 23, 1958 in Champaign. She survives.

Also surviving are three sons, Christopher, Andrew, and Eric McAfee.

Mr. McAfee graduated from Miami University in Ohio in 1953 and served in the army during the Korean War. He owned and operated Paper Works in Champaign.

Earl collected Errors, freaks and oddities of all types, especially on US booklets and booklet panes, by cover type.

He was a BIA/Usss member #8137, since 1974 (proposed by Barbara Mueller)

EFOCC member #4, since 1978 (Charter Member)

American Philatelic Society member since

Chairman, BIA/Usss Dummy Booklet Study Group since 1991

Chairman of the EFO Collectors Club Election Committee since 1985

Major contributor to Dummy Stamp Booklets, BIA/Usss Research Paper #3.

Major contributor to The EFO Collector (long-running series on booklet pane EFO's)

Champaign-Urbana (IL) Stamp Club member and CUSC Newsletter editor for many years

CUPEX Show Chairman for over 20 years

CWO Jim McDevitt, EFOCC President, "Since becoming the EFOCC Secretary in 1985 and subsequent tours as vice-president, editor, publicity director and several as president, there was never a position in which I did not have to seek and receive guidance, input and assistance from Earl. We had many telephone conversations during these past 18 years and my wife usually answered the phone and no matter the time of day, Earl would asked if she had been asleep and apologized for waking her, even though the majority of calls were in late afternoon. The benefit was that my wife and Earl would laugh over this and it came to pass and many times, Earl would spend more time on the call with her than me. Needless to say and from this personal contact, we are saddened by our loss."

Mr. John M Hotchner, EFOCC Vice-President says. "Earl was a friend, mentor, collaborator, and student. I first met him about 20 years ago by mail, at time I was beginning to learn about booklets and had more questions than answers.

Continued on page 3



He patiently instructed me; diagnosed material, teaching me about causes and effects, and about what was significant and what was not. Though eventually I became less a burden on him, he remained a highly competent and willing advisor in the booklet realm for the rest of his life. Indeed his willingness to share his knowledge, and his thirst to add to it, stand out as hallmarks; and so does his willingness to trade and share material with a struggling exhibitor when he undoubtedly could have sold it for more.

A most fitting epitaph was voiced by John Hotchner, Errors, Freaks, Oddities Collector Club Vice-President and noted *Linn's* columnist, "*Sad, such a gentle man and gentleman, always gracious about sharing his knowledge and passionate to learn more.*"

Mr. Bob Williams notes, "There are a number of qualities that I associate with Earl. (1) He was always very passionate about his three main areas of collecting: EFO's, booklets & booklet panes (by position), and US dummy booklets (in that order). (2) He was very research oriented, always asking questions and learning more about a particular stamp issue. This is one person who did not simply want to paste a stamp in square in an album. (3) He was more than willing to share information with other collectors. (4) I never talked to him once that he did not mention something about the local stamp club, what project they were working on, what interesting talk was scheduled for the next meeting. (5) He was very helpful when it came to encouraging new collectors, and this is a trait you do not see too often, especially from someone who is very specialized. (6) Before the group (minus Earl) went to e-mail, he always called me and kept me up-to-date on what was happening." a gentleman, one who obviously believed that each of us should be a contributor .

Today, I regret that we were so immersed in philately, that we never got very far into each other's non-stamp lives. But I know that he leaves the hobby much richer for others through his work to develop and share knowledge, and through the encouragement he gave to many of us to follow his example. For me he remains a presence, one of the best of the scholars of the last 25 years, but one who sought nothing but the satisfaction of knowing he had contributed.."

Mr. Terry Scott, "Sadly I never had the privilege to meet Earl in person. I too, remember many conversations on the phone (some more heated than others) regarding differences of opinions. Earl and I both liked this type of conversation because it brought out the best information in the end. His affinity to detail would sometimes drive me nuts. I would be in possession of the very dummy booklet we were talking about and Earl would correct something I had written about the booklet that he had never seen. He was right though! Working with Earl on Research Paper #3 was one of the most exciting things that I have done over the years of collecting dummy stamps. His leadership and ability to make details understandable to the general collector was terrific."

Mr. Michael Perry, "My friendship with Earl began in 1977 when we were both trying to understand the Process Marks that could be found on then-current miscut booklet panes of eight. The result of our studies was a series of articles in *The Bureau Issues Specialist* a year later showing methods to identify positions of booklet panes printed from 320/400 subject plates. Neither of us would have been able to write those articles individually; Earl taught me the value of research by committee. Earl also taught me a lot about writing, but he was never able to get me to eliminate all the technical jargon that he believed only confused the average collector. His goal was to simplify everything so that anyone could find the articles interesting (and perhaps get hooked and become a collector of EFO booklets). His long-running series of concise articles about booklets in *The EFO Collector* rate among the best articles I've ever read on this subject. Earl has left a big footprint and his name will be recognized years from now because of his willingness to share his knowledge in a way that brought new collectors into a very narrow specialty."

SCHIFF AUCTIONS

ARE AS EASY AS 1-2-3

SELLING STAMPS, COVERS & COLLECTIONS



We sell United States & Worldwide stamps and covers in each auction. Our consignors and buyers pay only a 10% commission, Lesser valued items can be combined to meet our minimum requirements. We will provide personal assistance and guidance. Your inquiries are invited. Personal pick-up by a bonded Schiff employee can be arranged for consignments of exceptional value. Please contact us before sending your consignment.

WE ALSO PURCHASE OUTRIGHT

What You Can Expect From Schiff Auctions



1. **YOUR COLLECTION** will be carefully examined, lotted and accurately described by our professionals.
2. **OUR WORLDWIDE CLIENTELE** developed over 56 years, will competitively bid for your stamps and covers.
3. **YOU CAN SELL** the auction dates best suited for your consignment. Our guidance will assist you.
4. **OUR EXTENSIVE ADVERTISING** in philatelic publications throughout the U.S., Europe & Asia will lure buyers for your properties.
5. **WE PROVIDE INSURANCE** by Lloyds of London as soon as your collection is delivered to us, or our bonded employee.
6. **WE PERSONALLY DISCUSS** your collection with you to advise how you can achieve the most financially rewarding results.
7. **OUR LOW COMPETITIVE COMMISSION RATES** makes us partners to secure the best results.

OVER 55 YEARS SERVING STAMP COLLECTORS
CONTACT US BY MAIL TELEPHONE OR FAX BEFORE SENDING STAMPS & COVERS.



Auction Catalogs	N. America Address	Overseas Address
1 year with Prices Realized	\$10.00	18.00
Year, Catalogs Only	7.50	15.00
Next Catalog with prices realized	1.50	2.50
Next Auction Catalog only	1.00	2.00

Pick up your catalog at our office without charge.

BID BY MAIL, FAX, TELEPHONE OR IN PERSON.

JACQUES C. SCHIFF, JR., INC.

195 Main St., Ridgefield Park, NJ 07660 USA
Telephone: 201-641-5566 From NYC 662-2777
FAX: 201-641-5705
Licensed & Bonded Auctioneers, Est. 1947

AUCTION # 295

**October, 2003
Knights of Columbus Hall
Ridgefield Park, NJ
Now accepting consignments**

Secretary's Report

Stan Raugh
4217 8th Avenue, Temple, PA 19560-1805
E-mail: trex@bigplanet.com

New Member Report

A big welcome to the following new members:

Albert Mirr, #1283, 110 Blowing Cave Road, Gurley, AL 35748
James W. Spindler, M.D., #1284, 3730 E. Turtle Hatch Road, Springfield, MO 65809
Noah Blum, #1285, 60-01 C 194th Street, Flushing, NY 11365
Don Williams of Saskatoon Stamp Centre, #1286, Box 1870, Saskatoon, SK CANADA S7K 3S2
Gary Denis, #1287, P. O. Box 766 Patuxent River, MD 20670

...and, back with us...

Robert Winter, #768, P. O. Box 283, Spring Valley, NY 10977
James R. Cotter, #604, P. O. Box 214, Stoneham, MA 02180
Bob Dumaine of Sam Houston Philatelics, #275, 13310 Westheimer #150, Houston, TX 77077

And a big thanks to the 59 members who renewed since May 1 !!!

We had well over a third of our membership come up for renewal in June and the club could have had a large loss in our membership total. We lost two members, Earl McAfee and Marvin Berryhill, who passed on. Our sympathies to their friends and families.

We had four resignations and nine who have not yet renewed.

But we have also picked up several new members and reinstatements.

As of July 31, we have 162 members and we may still get back a few who did not pay.

In December, 15 members will be up for renewal, but if we do as well with them as our recent batch of renewals, plus the new members we should pick up we could very well have a positive gain for the year. So...wherever you go—share the EFOCC!

Dues are Due!

Well, not exactly...I don't see anyone with a label expiring in this quarter! But, if your label ends in "03D" your dues expire the end of this year. Do Santa and Stan a favor and pay early...that way you will have more to spend on Christmas presents!

A Different Kind of EFO!

As much as your secretary would like to claim perfection, he is far from it!

This is "on the job" training for me!

So, if I cause an "EFO" such as a miss-spelling of your name, wrong renewal date on your label, etc., please point it out to me!

Won't be the same value as an inverted Jenny, but nearly as important to me.

Thanks again to everyone...see you next issue...stan

Meeting Our Fellow Members

Joel Radin of Victory Stamps

by Stan Raugh

A man of few words—but long on experience—Joel Radin can summarize his thoughts better than anyone I have ever interviewed.

The friendly, 71-year-old South Carolinian practices the word economy of a small town New Englander. Or maybe, John Wayne.

His answers are polite and to the point...his e-mail responses are lightening fast. And his philatelic experiences go way back.

A collector "since childhood," he became a dealer about 40 years ago, selling regular U. S. issues and specializing in EFOs.

"Originally, the affordability and interesting variety" attracted him to EFOs. He will tell you proudly that he offers "all types of EFOs, including major errors."

Joel supplies the hobby mostly by using auctions and special offer advertising.

Amazingly, in his career he has discovered only "a few minor freaks, nothing major." But many collectors have enriched their albums and stock pages with his offerings.

The most interesting item he ever handled was an example of Scott #1190, the 1961 four-cent Nursing stamp.

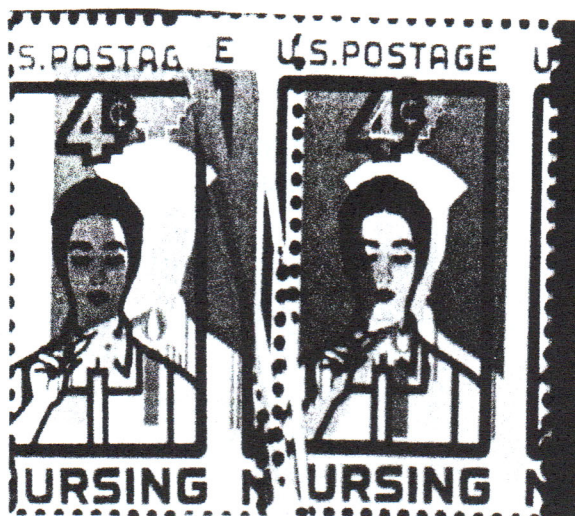
It had "a large paper fold and was mis-registered causing a double image. It was also mis-perforated. The lot sold in one of my auctions."

One thing Joel is not short on is his appreciation for the hobby.

"Collecting EFOs has not only been fun, but profitable as well," he matter-of-factly states.

This candid admission is refreshing. In an age of complaining and complacency Joel reminds us there is much to be thankful for in the world of philately. And he does so with just a few words.

(Anyone interested in contacting Joel can write him at: Victory Stamps, P. O. Box 1129, Mount Pleasant, SC 29465-1129. Or e-mail him at: jradin2@earthlink.net)



Is there a doctor in the house?

Foldover Errors A Distinct Subgroup Of Philately?*

by: Joseph Monteiro

Paper folds and creases have always had a special appeal to philatelists. This is hardly surprising as paper folds have created stamps with unusual errors and patterns. Most of these errors are generally unique making them interesting pieces of conversation and unusual pieces fit for display. One specialist in this area states "they are visually arresting, they provide revealing and sometimes rivetting information about printing methods, and the most dramatic ones typically command awesome prices." [5]

To specialists in philately, paper folds are much more than the above, it provides information not available about the stamps, it suggests the sequence in which various stages of the printing of stamps were done. For instance, was tagging done before the printing or after, was the perforation done before the tagging or after, etc. It also indicates more about the printing of stamps such as whether the panes of stamps were printed with marginal inscriptions or not or other information printed on the sheet that was trimmed off before panes were sold to the public.

Paper folds, in addition, have also fascinated philatelists because explanation about the causes of these errors cannot be easily generalized. And often like many things that cannot be easily understood or explained, these errors have attracted and fascinated philatelists and led to speculation as to their causes.

These errors are also a distinct subgroup of philately, enabling philatelists to specialize in a particular subgroup. Further, since these errors are generally unique, philatelists seeking one of a kind errors may find a subgroup of errors that satisfy their needs. Furthermore, while some errors may not be genuine, paper folds errors are generally unique and difficult to fake.

Paper Fold Errors On Stamps:

The 1964 *Concise Oxford English Dictionary* defines a fold as follows "Double (flexible thing) over upon itself"; "bend portion of (thing) back, down" (p. 471). A fold has the property of one bend. This definition with regard to paper means a fold in the paper that occurs above the surface to be printed or perforated or below the surface to be printed or perforated.

Paper fold errors can be defined as an error resulting from a fold of the sheet of paper on which the stamps were printed. The fold may be caused by a part of the sheet that was not trimmed off or may be caused by a fold on part of the pane on which the stamps were printed. Typically paper folds occur at the corner of the sheet and occur on a press that is sheet-fed. As stated in one source "As the name implies, foldovers occur when part of a sheet of stamps (most often a corner) is advertently folded during production, ..." [10]

Paper fold errors can be classified into three major groups. First, paper folds which result in part of the design missing that results from pre-printing folds. Second, paper folds which result in unusual patterns of perforation that results from pre-perforating folds. Third, paper folds which

result in the printing of an unusual design on the stamps. Each of these groups are quite distinct and enable one to theorize what one can expect, if the error falls into these separate groups.

In the first group, the paper fold results in part of the design or overprint missing. There are a few examples of this type of error. The most famous paper fold error on Canadian stamps in this group is the 7-cents plane over Ottawa with the overprint missing. Other paper fold errors in this group are the 5-cents Wilding with a rectangular part of the design missing or the 4-cents Cameo with the design or most of it on the stamp missing.

In the second group, the paper fold results in unusual patterns created by the perforator. There are numerous examples of this type of error. The most remarkable paper fold errors on Canadian stamps in this group which leave part of the stamps partially imperforate are the 1-cent Centennial, the 5-cents Centennial, the 15-cents Centennial, the 17-cents Peace Tower, etc.

In the third group, the paper fold results in the creation of an unusual design. There is one example of this type of error because it has resulted in conjunction with another error. An example of this error is the 1-cent Macdonald error from the Caricature series which displays two heads.

Each of these groups will be examined in greater detail.

Pre-printing Paper Folds-Paper Folds Which Result in Part Of The Design Missing:

Paper folds in panes of stamps or sheets of stamps have been found from time to time with part of the design or overprint missing. These paper folds have been quite fascinating for two reasons. First, it results in an integral part of the design missing. Second, the paper fold results in part of the design sometimes being printed somewhere else which is often quite puzzling. Third, the part of the design missing is often quite difficult to explain. In this section, types of paper folds, cause of paper fold errors and results of paper folds will be examined. In addition, a few paper fold errors with part of the design missing are illustrated.

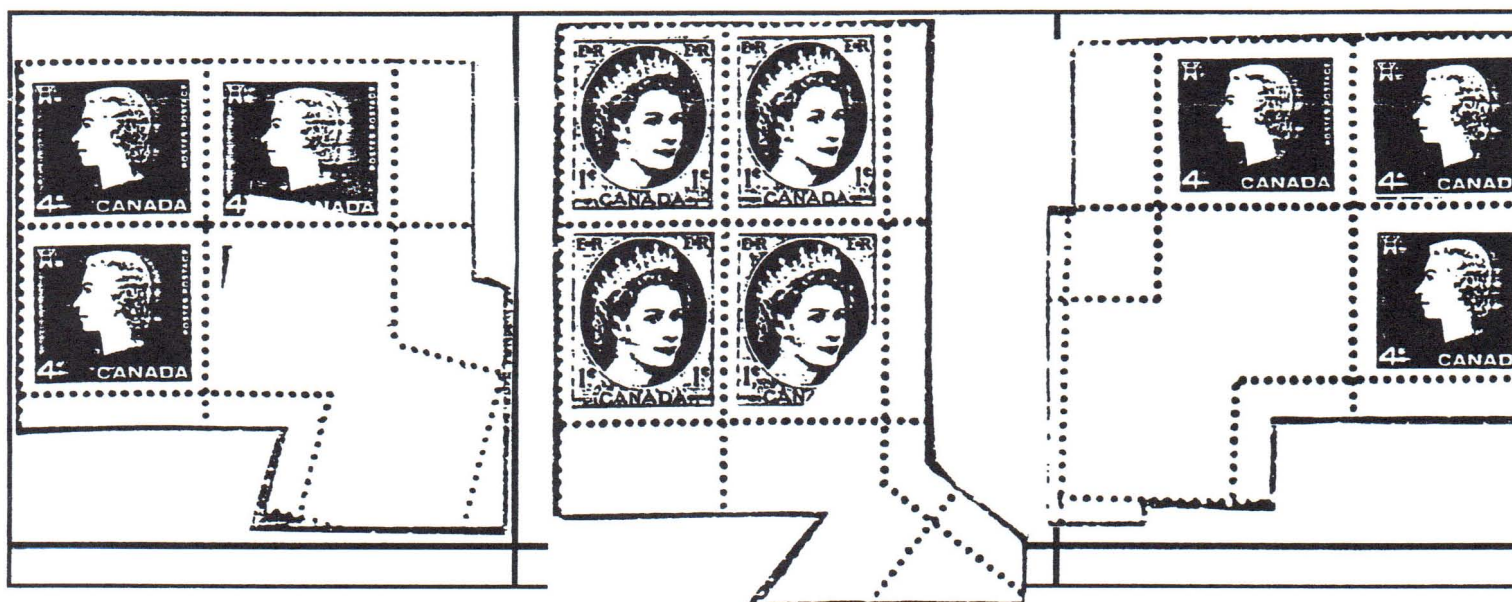
Types of Paper Fold Errors: The types of paper fold errors with part of the design missing that are known to exist will be briefly examined. 1. Part of printed design on the stamp pane is missing which appears on the reverse of the stamp. In other words, an integral part of the design is missing from the normal stamps but appears elsewhere on one of the stamp. 2. Part of the printed design on the stamp pane is missing. In other words, an integral part of the design is missing from the normal stamps but does not appear elsewhere on one of the stamp. 3. Part of the printed design on the stamp pane is missing which appears on part of the sheet that should have been trimmed. In other words, an integral part of the design is missing from the normal stamps but appears on the untrimmed part of the sheet on the reverse side. 4. Part of the printed design on the stamp pane is missing which does not appear on part of the sheet that should have been trimmed.

Cause of Paper Fold Errors: The first type of fold over error indicated above results from a multiple printing process. In other words, the stamps are printed using two colour printing plates or using two different printing processes. In the course of using the first or second colour or the first or second printing process, a part of the pane became folded. A classic example of this type

The third type of fold over error results in the impression of the plate missing in whole or part on the stamps in the sheet depending on the extent of the fold. If the fold is minor it typically affects one stamp, if it is more extensive it affects two or more stamps. The missing impression occurs on the gum side of the stamp. If the fold over is opened, it reveals a blank space where the impression should have occurred. The impression occurs in the reverse on the gum side.

The fourth type of fold over error is similar to the above except that if the fold over is opened, it does not reveal any impression on the gum side. The missing design only appears on the stamp.

Illustration Of Fold Over Errors With Part Of The Design Missing



Pre-perforating Paper Folds-Paper Folds Which Create Unusual Patterns Of Perforation:

Paper folds in panes of stamps or sheet of stamps have been found which create unusual patterns of perforation. These paper folds have been quite fascinating for several reasons. First, it results in a unique pattern of perforation. Second, these panes are often split up creating a challenging job of plating various portions of the pane together in an attempt to explain how this error occurred. As in the previous section, in this section types of paper folds, cause of paper fold errors and results of paper folds will be examined. In addition, a few illustrations are presented.

Types of Paper Fold Errors: The types of paper fold over with unusual patterns of perforation that are known to exist will be briefly examined. 1. The paper fold over results in a unique pattern of perforation without affecting the stamp. In other words, the unusual pattern of perforation results only in the selvage or the corner of the stamp. 2. The paper fold over creates stamps of unusual sizes and shapes with various parts of the stamp design on it. Alternatively stated, the shapes of the stamps that result from the fold over are usually unique with various parts of the design of the stamp depending on the shape of the stamp. These shapes are not of a random nature but of a precise nature. 3. The paper fold over can create stamps that are partially imperforate. In other words,

of paper fold error is the 7-cents plane over Ottawa with the overprint missing. During the printing of the overprint, one of the stamps in the pane folded over the stamp in the row above. As a result, the overprint intended for the stamp above appeared on the reverse or gum side of the stamp below. In addition, the overprint intended for the stamp below is also missing. This type of error could also occur if the stamp is folded vertically that is over the stamp in the adjacent column with a similar effect. In passing it should be noted, that when several printing processes are involved, problems that occurred with the above overprint are unlikely to occur since all the different printing processes are done before the perforation. It is however possible that the paper fold could get undone after the first printing process, to reveal only a part of second printing process having an effect similar to that of the overprint.

The second type of fold over error indicated above also results from a multiple printing process. The cause of the printing error caused by the fold over is similar to that indicated in the preceding paragraph. In the course of using the first or second colour or the first or second printing process, a part of the pane became folded. However, unlike the above example, a stamp did not fold above the stamp in the row but folded under it. As a result, the overprint is missing on the stamp that is folded under. This type of error could also occur if the stamp is folded vertically that is under the stamp in the adjacent column with a similar effect.

The third type of fold over error indicated above results usually from a single printing process. When a part of the sheet of stamps gets folded above the printing side, before the printing process, part of the sheet of stamps that should have been trimmed off is left. The fold over generally occurs at the corner of the sheet. When the stamps are printed, part or all of the design is printed on the paper folded above. As a result, when the sheet of stamps with the folded corner is unfolded, the design is missing or partly missing. As can be expected the design appears on the part that should be trimmed off.

The fourth type of fold over error indicated above results usually from a single printing process. The cause is similar to that described in the preceding paragraph. But in this case, the fold over is under the printing side. As a result, when the sheet of stamps with the folded corner is unfolded, the design is missing or partly missing.

Results of Paper Folds : The first type of fold over error results in the overprint or the impression of the second colour plate or process missing on two stamps on the correct side. Since one stamp is folded over another where it should receive the impression, the overprint or the impression occurs on the gum side of one stamp. As a result, the image appears on the reverse when viewed from the gum side when the fold over is undone. One can quite easily demonstrate this result if one experiments with paper folds. It is just a question of mathematics and not one of magic or illusion.

The second type of fold over error results in the overprint or the impression of the second colour plate or process missing on one stamp on the correct side, since one stamp is folded under another where it should receive the impression. This result is much less dramatic than the one in the preceding type of error. This error is much less dramatic than the first type of error since there is no overprint or impression found on another stamp on the reverse.

some of the perforation need not appear on the stamp and unlike the usual partial imperforate stamps which are completely imperforate on one side or more these fold over partial imperforates need not be complete on one side. 4. The paper fold over can create stamps with the tagging missing fully or partially.

Cause of Paper Folds Errors: The first type of fold over error indicated above results because the selvedge corner was folded during the perforation process (i.e. either before both horizontal and vertical perforation were done or either one) and after the stamps were printed. The error also depends on the type of perforator used, with most of these errors being line comb for Canadian stamps. This type of error generally does not arise because the sheet was improperly cut, quite unlike the fold over errors discussed in the previous section.

Generally, such unique perforation patterns on the selvedge are limited. The limitation or constraints arise from the fact that the fold over can only occur from the last corner perforation of the stamp to the edge of the corner of the selvedge given the fact that the fold over does not affect the perforation of the stamp. Thus the unique pattern of perforation that results in the selvedge depend on three things: the nature of the fold or the slope of the fold; the distance of the fold from the edge of the selvedge; and whether the fold over occurred before both sets of perforations were made or only before the horizontal or vertical perforation. The pattern of perforation is invariant with respect to whether the paper is folded over or under.

Two patterns of perforation lines appear on the selvedge that have been folded? One which is bent with 'no' other additional perforation appearing bent in the selvedge; and the other with the above bend and with 'additional' perforation appearing? The reasons for the first is because of one of the following reasons: the bend in perforation is very near the edge of the selvedge; or the size of the selvedge is short in relation to the size of the stamp; or a fold in the selvedge occurred after the horizontal or vertical perforation were made.

Perforations which intersect each other also appear on the selvedge that have been folded. The intersecting perforations depend on the nearness of the bent perforation to the stamp and the width of the selvedge. The nearer the bent perforation to the stamp and the wider the selvedge the more likely will the perforations intersect each other. Further, it also means that the fold occurred before the horizontal and vertical perforation were made. One can detect the slope of the fold on the stamp selvedge. Bisect the angle between the straight normal perforation and the bent perforation. If the selvedge is folded along this bisection, the bent perforation will appear as normal straight lines on the reverse side when viewed with the fold though on the front side it appears with unusual patterns when viewed without the fold.

The second type of fold over error indicated above results because the corner was folded during the perforation process and after the stamps were printed but before the sheet of stamps were cut. This results in some stamps at the corner and sides of the sheet with unusual shapes when perforated and with various parts of the design of the stamp. Parts of these unusual stamps may result with parts of the selvedge and uncut paper of the sheet that would normally have been trimmed off. The unusual shapes of the stamp and parts of the design on the stamp have nothing to do with the printing of them which was done correctly.

The third type of fold over error indicated above also results because of the same reason indicated in the preceding paragraph. The partial imperforate perforations can result with one or more stamps with unusual shapes.

The fourth type of fold over error also results because of the same reason described above. The missing tagging partially or completely occurs because the fold occurred before the tagging was done. As a result, the tagging appears correctly on part of the sheet and not on the folded part. If the tagging was done before the fold occurred then the tagging would appear correct with the printing.

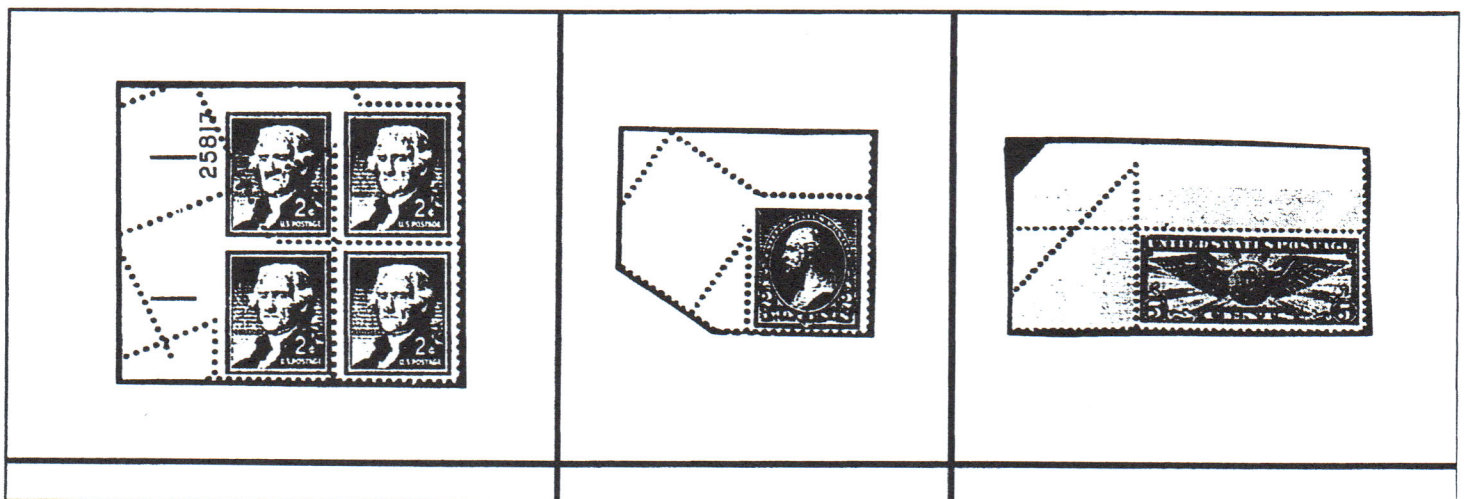
Results of Paper Folds: The first type of fold over error results in the selvage perforation at the corner appearing with various patterns. In some cases, one of the perforation lines are bent in another direction (i.e., either the horizontal or vertical perforation line is bent. The bend can appear at various positions depending on the paper fold. In some cases, two sets of perforations appear in the selvage, one the bent one and the other an independent line. These two sets of perforation may sometimes cross and may sometimes not cross on the selvage.

The second type of fold over error results in stamps of various shapes and with various parts of the design of the stamp on it. The tagging appears normal like the printing and appears with various parts of the design on the stamp.

The third type of fold over error result is similar to that described above. However, in addition one of more of the stamps may be partially imperforate. In other words, the perforation or parts of the perforation do not appear in the normal position. At times, there may be no perforation on part of the side or sides of the stamp.

The fourth type of fold over error result is similar to that described above. However, in addition one or more stamps may be partially tagged. In other words, the tagging or parts of the tagging do not appear in the normal position.

Illustration Of Fold Over Errors Which Have Created Unusual Patterns Of Perforation



Paper Folds Which Create Unusual Design on Stamps:

Paper folds which create unusual designs do not usually occur. However, on occasion such unusual designs may occur if the paper fold error occurs in combination with another error. So far, only one instant of such an error is known to have occurred on a Canadian definitive stamp. It occurred on the Caricature 1-cent Macdonald stamp. A well known dealer of Canadian stamps stated "the 1 stamp in a billion. Probably a billion of this stamp were printed and this is the only one ever found double faced! The error is due to a fold and offset and the miracle is that it survived. The pair is still unused but someone threw it into a box of used stamps and gave it to a church group. They noticed the pair and sold it separately to me."[5]

Cause of Paper Fold Error: One well known writer on Canadian paper folds states "I have never seen a comparable corner fold variety (not just on the Caricature definitives, but on any stamp). I am not entirely sure how it was produced, so what follows is part theory, part conjecture."[5]

"Varieties consisting of reversed offsets of the stamp design on the gum side, while uncommon, are well known. ... The double head variety is similar to the partial offset on the 14c Parliament in that the reversed image stops abruptly in the bottom right corner. So presumably the preceding sheet was skewed or folded when it went through the press. But the double-head offset occurs on the face of the stamp, not the gum side, because the sheet with the variety was also folded when it went through the press. Note that the fold must have occurred before the design was printed ..."[5]

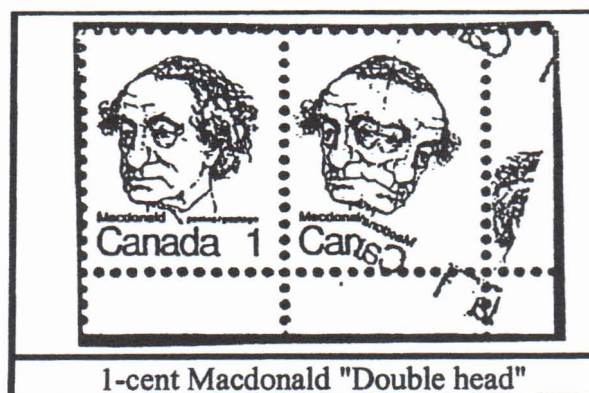
"There's more! Did you notice that the perforating and guillotining were normal? The corner fold must have somehow become unfolded before the sheet was perforated. Of the two hundred or so corner folds I've seen, less than five have a fold that somehow corrected itself part way through the production process."[5]

"Oh by the way, the right most stamp is 1-bar tagged. The stamp has the normal phosphor bar on the left side but is missing the bar on the right, and there is no tagging between the two reversed stamp images. This observation is not quite as frivolous as it may seem. ... The fact that the right bar is missing implies that the sheet was still folded when the stamps were tagged, but the other elements that produced the reverse image were absent."[5]

In brief, the fold over explained above occurred before the printing of the design, as a result the fold resulted in the missing image of the head at the bottom. Somehow the gum side with the fold came into contact with the impression cylinder because it was misfed through the press since the offset image is quite strong and not due to contact with the wet ink from the earlier printed sheet of stamps. The tagging was done before the fold was removed resulting in the absence of tagging on portion of the stamp that was folded.

Results of Paper Folds Error: The result of the above fold over error is that the stamp has only part of the design and part of the offset design which appears backward. When the paper fold is unfolded, both the part design and the offset appear joined together creating an unusual design. This fold over error which created an unusual design of the stamp is shown in the illustration

Illustration Of Fold Over Errors Which Have Created Unusual Design on Stamps



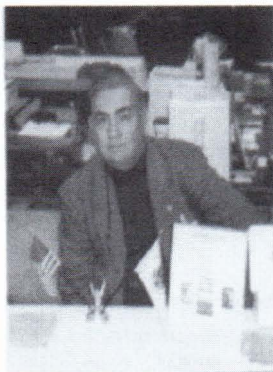
Conclusion:

In summary, first, paper folds create stamps with unusual errors and patterns. Most of these errors are unique making them interesting pieces of conversation and pieces fit for display. At first sight, paper fold errors usually appear unbelievable or deliberately created errors. Second, paper folds are educational because they provide revealing and sometimes rivetting information about printing methods. Usually very little information exists about: How stamps are printed? When is the tagging done? When is the perforation done? What is printed on the edges of the entire sheet? What is trimmed off before the sheets are sold? Many of these fold over errors provide revealing information on some of the above questions. Third, paper folds are a distinct subgroup of errors not only for collectors to collect but also for philatelists to subject to further analysis. The unusual patterns and designs can usually be explained with mathematical precision. This makes some of the explanation as to the cause of the errors intellectually satisfying and rewarding.

Bibliography:

1. "QE II - Wilding Issue," Corgi Times, Jan.-Feb. 1994, p. 63.
2. LeBlanc, Donald, "Corner Fold Overs," Corgi Times, March-April 1999, p. 95.
3. LeBlanc, Donald, "Corner Fold Overs," Corgi Times, May-June 1999, p. 114.
4. LeBlanc, Donald, "Corner Fold Overs," Corgi Times, July-Aug. 1999, p. 6.
5. Beaudet, Leopold, "Corner Folds on the Caricature Definitives," Supplement to Corgi Times, July-Aug. 1999, pp. 1-10.
6. "Pre-Printing Paper Folds," CDSGN, Vol. 12, No. 3, December 1992, p. 476.
7. "More Corner Inscription Remnants," CDSGN, Vol. 12, No. 4, March 1993, p. 488.
8. "Paper Folds: 15 Cent and 20 Cent," CDSGN, Vol. 13, No. 5, December 1994, p. 550.
9. Monteiro, Joseph, Definitive Postage Stamps of Canada, Volume V (Work in Progress).
10. Datz, R. Stephen, Catalogue of Errors on US Postage Stamps, 1996/7, pp. 143-144.

* This information for this article is largely taken from source indicated in [9].



PRESIDENT'S REPORT

Please take time and give thought that the EFOCC needs new Club officers for the period 1 July, 2004 to 30 June, 2006. Club by-laws require a nomination committee, consisting of three members, shall be appointed by the President prior to the 15th of November in the last year of his/her term of office. This committee shall not include any person planning to seek an elected Club office. The Winter edition of the Club's journal shall contain an announcement of the appointment and a call for nominations. This committee shall report prior to the 15th of January in order that the election may be conducted in the spring issue, with the results available for publication in the summer journal's issue. Election and affirmation will be by mail with a majority of the ballots cast being necessary for election or affirmation.

Please consider one's ability and being able to serve as a Club president, treasurer, secretary, or board member.

Please mark your calendar—there will be an east coast EFOCC regional meeting during VAPEX 2003. This show will be from 11 to 13 October, 2003 at the Virginia Beach Pavilion Convention Center. Note and due to the holiday, this show is from Saturday to and including Monday.

Please visit the EFOCC Auction website at www.efocc.org and our main website at www.foers.org.

EFOCC MEMBER POST

**Members are reminded—you are entitled to three (free)
Member post insertions per fiscal year**

For Sale Best Offer Two mis-cut 25-cent Pheasant booklets—**Charles Kahn**, 101 Hendy Avenue, Elmira, NY 14905-1904.

WANTEDt! Anything unusual for The Legend of Sleepy Hollow (Scott #1548), Washington Irving (Scott #859), or 1981 Christmas Bear on Sled (Scott #1940). — Gary Denis, P. O. Box 766, Patuxent River, MD 20670.

Wanted!! Transportation coil varieties such as plate cracks, etc. Prefer strips of five with the flaw in the center. Write firstgiving price. Also interested in corresponding with other collectors of any repeating varieties, checklists, etc. **Stan Raugh**, 4217 8h Avenue, Temple, PA 19560-1805.

Wanted!! Unusual MDI booklets (blue cover vending booklets of fifteen or thirty 32c or 33c stamps). Also seeking flag EFO's, eighteen cents and up. Color shifts, color contaminations, dry printings, miscuts, etc. Also, flag/porch 2915A and 2915C coil with 11 teeth along right side and plate #66666, mint or used.—**Doug Iams**, P. O. Box 7651, Santa Rosa, CA 95407

ALL CONTENTS COPYRIGHT 2003 BY THE EFO COLLECTORS CLUB.

Authors and contributors have express permission to reuse any of their material elsewhere without permission. Except for material reprinted herein, or material individually copyrighted by the author, material herein may be reprinted elsewhere as long as full credit is given to The EFO Collector, citing the issue date and number, and giving the address of the EFOCC Secretary.

The EFO Collector is published quarterly. The deadline for any issue is the 15th of the month preceding the month of issue-- e.g., 2/15, 5/15, 8/15 & 11/15. Send editorial material directly to the editor. Sample copies of The EFO Collector are available for \$3 from the editor, 955 S. Grove Blvd, #65, Kingsland, GA 31548-5263.

New membership includes subscription to **The EFO Collector**. Application for membership, accompanied by \$16 (\$30 overseas) which covers the first year and the initiation fee, should be sent to the Secretary, Mr. Stan Rough, 4217 8th Ave., Temple, PA 19560. Life memberships are available at \$250 (U.S and Canada), \$467 overseas. Annual dues renewal are \$15 for domestic members and \$30 for foreign members.

Advertising for The EFO Collector will be accepted at the following rates for camera-ready copy: first insertion-- full page, \$30; half page, \$16; quarter page, \$9. No discounts apply. The first-insertion rates for ads requiring composition are full page, \$60; half page, \$32; quarter page, \$18. The first insertion must be fully prepaid. Classified ads will be accepted at 6c per word. The deadline for ad copy is the 15th of the month preceding the month of issue. Advertising, ad payments, and related inquiries should be directed to the Editor.

EFOCC members are entitled to three free 35-word (excluding address) classified ("EFO Post") ads annually. These should be sent directly to the editor.

EFOCC OFFICERS—1 July, 2002 to June 30, 2004

PRESIDENT/EDITOR—

CWO Jim McDevitt, 955 S.Grove Blvd., #65, Kingsland, GA 31548-5263
Phone: (912) 729-1573, Fax: (912) 729-1585, Email: <cwouscg@aol.com>

VICE-PRESIDENT-

John M. Hotchner, POB 1125, Falls Church, VA 22041-0125—Phone: (703) 820-5449,
Email: <jmhstamp@ix.netcom.com>

AUCTION DIRECTOR-

Peter L. Rikard, POB 25623, Richmond, VA 23260—Phone: (804) 550-4953,
Email: <plrikard@comcast.net>

TREASURER-

David Hunt, 45 Fairway Drive, Denver, PA 17517—Phone: (717) 445-9420,
Email: <dhhunt@ptdprolog.net>

SECRETARY

Stan Rough, 4217 8th Ave., Temple, PA 19560—Phone: (610) 921-5717
Email: <trex@bigplanet.com>

BOARD MEMBER (3 POSITIONS) — VACANT

EDITOR— VACANT

ADVERTISING DIRECTOR—VACANT

NOTE—Auction 96 closes October 10, 2003

Preparing Lots:

Please use a blank form from, such as contained in a recent copy of *The EFO Collector*. Photocopies are fine. Please use a separate form for each lot.

Secure each lot to the front of the form; attach large lots to the reverse side. Protect all items with mounts, glassine, etc., and stiffeners if necessary, but **be sure** item/items can be easily removed by auction director for examination and/or photographing. Do not use staples. Attach each item so that description can be easily read. A simple and easy way to mount lots is to do so on dealer sales cards, or in glassines mounted face down for easy removal.

Include a reserve (minimum bid) or write "none". Lots may be revised to accurately describe items; or returned if necessary. Your name and EFOCC number must be on the consignment form but to preserve anonymity, these are removed from the consignment sheet before sending item to successful bidders.

Send consignments to Peter L. Rikard, POB 25623, Richmond, VA 23260. Use **insured** or **registered** U. S. Mail.

Consignor Fees:

Consignor commission is 10% of the hammer price, with a minimum bid of 50 cents per lot.

Unsold lots incur a 50 cent fee per lot, and the consignor pays return postage and insurance.

Expenses and printing constraints make it impractical to picture every lot, especially those which are large in size. EFOCC will exercise discretion in picturing lots.

Consignor Special Instructions:

To save postage and labor, EFOCC can automatically re-submit unsold lots at lower minimums in a future auction, **if you instruct EFOCC clearly what to do.**

If you send duplicate or very similar lots, it is consignor's responsibility to state clearly if you would like to these to be placed in different sales. Generally, EFOCC places all items received in the same sale to minimize paperwork.

Consignment/Payment Timing:

EFOCC receives consignments continually and prepare them for subsequent sales, roughly on a first in first out basis. However, large lots may be spread over several auctions.

After the close of each sale, unsold lots are offered to bidders on a first come-first served basis for \$1 over the reserve with no buyer's commission or postage. This increases total sales, makes more bidders happy, and sells more lots for consignors, all for very little additional effort.

EFOCC needs approximately one month after auction's closing date to determine successful bidders, prepare and mail invoices, mail lots, receive payment from winners, list after sale lots and accept their offers, etc., etc. Thus, consignors can expect to receive payment about four to six weeks after an auction closes.

NOTE—Auction 96 closes October 10, 2003

How to Bid:

Please bid on a consignment form from a recent *EFO Collector*. A photocopy is fine.

Include your EFOCC membership number. For new bidders and non-EFOCC members, please include your APS membership number. Sign your bid sheet to acknowledge acceptance of the EFOCC auction rules; unsigned forms can not be accepted.

Submit bids to Peter L. Rikard, POB 25623, Richmond, VA 23260. Email <Rikard@mediaone.net>

Bidding Precautions:

Minimum bids are not estimates, but are true reserves established by the consignors. Bids below the listed reserve will not be accepted.

Bidders are responsible for inaccurate bids. Bids do not have to be typed, but, please, be sure numbers and amounts are clearly legible. Confirm phone and Email bids with a written bid sheet.

Auction Bid Increments:

Please use the following increments when bidding and/or assigning reserves to consignments. Lots are sold to the highest bidder at one advance over the second highest bid.

Bid Level ~~~~~ Increment

\$1 to \$9.99.....	\$.50
\$10 to \$49.....	\$ 1.00
\$50 to \$99.....	\$ 2.50
\$100 to \$499.....	\$ 5.00
\$500 and up.....	\$ 10.00

EFOCC reduces out-of-increment bids to the next lower increment. For example, a bid of \$39.50 will be taken as \$39.00.

Special Bidding Instructions:

As the EFOCC is a small auction, special instructions can not be easily accommodated. EFOCC can not accept "BUY" bids nor "INCREASE BY...%". **Please, make your final, best, and highest bid and you will get the lot at the lowest price available.**

Bidders Payments:

A 10% buyer's premium is added to the hammer price of each lot. Buyers pay postage, plus insurance on lots valued at over \$10.00.

Payment is due upon receipt of invoice. If you will be out of town for a while just after an auction closes, or are moving to your summer home about that time, please let EFOCC know at the time you place your bids.

Returning Lots:

Within five (5) days of receipt of awarded lots, you may return any lot which is not described correctly provided such lot is still in its original condition. If an expertising certificate is a condition of bidding, please inform EFOCC of this before auction closes.

One Final Request:

Please bid generously on **donation** lots whose monies go entirely to the benefit of the EFOCC.

Notes from the Auction Director

Rules of the Road

First, this is **OUR** auction. That means that this serves as a place for consignors to sell their material, including private individuals and dealers. And this is a place that members and others can buy material that may not be available where they live.

Because this is EFO material, I attempt to photograph every lot that I can, but there are some lots that cannot be easily shown nor potentially adequately described. Most of the descriptions and all of the prices are set by the consignors. If someone relies on the description and illustration and the price seems reasonable then people can bid in confidence.

The superlatives, "scarce", "rare", "only 6 known", ... are the words of the consignor and have to be taken with a grain of salt. Prices for material that are not catalogued errors are whatever the consignor has set and may or may not be a "good deal". But where I can, I will insure that the material offered is adequately described, is reasonably priced and that the EFOCC auction is a fair marketplace for consignors and buyers.

New! New! New!

I have included a new item in the auction listing. Following the minimum bid is either a number that is the Illustration Page for the lot or the letters NI, for not illustrated. The illustration pages have a tag on them that notes the Illustration Page number. All lots will be illustrated on the web site. This auction should be available by the time you read this. WWW.EFOCC.ORG has all the lots and illustrations, bid sheets, instructions and more.

If you are the high bidder I will send you an INVOICE first for payment. I do this with all bidders. The USPS will not let me send an invoice and materials in the same package at First Class Insured rates. Please pay the invoice as soon as possible. There are a lot of delays already in the auction process and waiting 2-3 months for payment doesn't help.

State of the auction

The 96th auction has 320 lots, lots of error material and other EFOs. I welcome more material, I welcome comments by members about what they want to see in the auction and I welcome your criticism of the auction. Your comments can only help make this a better auction.

Bid with confidence

No matter how much you bid, you will always get a lot at either the opening price (if there were no other bidders) or at **ONE BIDDING INCREMENT OVER THE SECOND HIGHEST BID**. If the second highest bid is \$24. and you bid \$100., you will get the lot for \$25. That is one increment (\$1) over the second highest bid (\$24). Remember this is **OUR** auction.

Please use the bid sheet. Earliest postdate on a tie bid wins the lot. If you send me email, I would appreciate your sending a bid sheet to confirm your bids. Please note that I have a new email address, the old will still work for a year, but if I am in your address book, update it now.

Peter Rikard
Auction Director
EFOCC
PO Box 25623
Richmond, VA 23260
prikard@comcast.net

NOTE—Auction 96 Closes October 10. 2003

Final results of Auction 95

Lot	Price	Lot	Price	Lot	Price	Lot	Price	Lot	Price	Lot	Price	Lot	Price
1	36.00	51	NS	101	NS	151	NS	201	12.00	251	9.00	301	NS
2	NS	52	6.50	102	20.00	152	NS	202	NS	252	NS	302	NS
3	NS	53	15.00	103	23.00	153	NS	203	NS	253	NS	303	NS
4	NS	54	9.00	104	NS	154	NS	204	NS	254	9.00	304	40.00
5	7.50	55	9.50	105	21.00	155	NS	205	NS	255	13.00	305	NS
6	5.00	56	5.00	106	50.00	156	NS	206	15.00	256	21.00	306	NS
7	11.00	57	NS	107	NS	157	25.00	207	12.00	257	5.00	307	4.50
8	9.00	58	9.00	108	NS	158	NS	208	7.00	258	NS	308	10.00
9	10.00	59	11.00	109	32.00	159	NS	209	NS	259	NS	309	10.00
10	NS	60	7.50	110	15.00	160	NS	210	4.00	260	NS	310	46.00
11	NS	61	NS	111	4.00	161	NS	211	NS	261	3.00	311	NS
12	30.00	62	NS	112	4.00	162	22.00	212	4.00	262	NS	Lots sold 162 Total sales 2,417.05	
13	15.00	63	9.00	113	9.00	163	NS	213	11.00	263	NS		
14	25.00	64	13.00	114	NS	164	NS	214	12.00	264	5.50		
15	11.00	65	12.00	115	NS	165	NS	215	NS	265	8.00		
16	17.00	66	12.00	116	NS	166	NS	216	8.00	266	NS		
17	NS	67	14.00	117	4.50	167	NS	217	NS	267	NS		
18	NS	68	11.00	118	6.00	168	110.00	218	10.00	268	NS		
19	NS	69	9.00	119	NS	169	4.00	219	NS	269	NS		
20	8.00	70	9.00	120	10.00	170	20.00	220	NS	270	12.00		
21	17.00	71	NS	121	9.00	171	25.00	221	25.00	271	NS		
22	NS	72	11.00	122	NS	172	NS	222	NS	272	NS		
23	NS	73	12.00	123	NS	173	NS	223	NS	273	NS		
24	NS	74	8.00	124	10.00	174	25.00	224	NS	274	3.00		
25	9.00	75	10.00	125	7.50	175	NS	225	NS	275	3.50		
26	7.00	76	NS	126	3.00	176	NS	226	10.00	276	5.00		
27	15.00	77	8.00	127	15.00	177	NS	227	NS	277	NS		
28	50.00	78	NS	128	1.00	178	20.00	228	NS	278	NS		
29	10.00	79	NS	129	3.50	179	30.00	229	NS	279	NS		
30	NS	80	11.00	130	15.00	180	4.00	230	NS	280	NS		
31	3.00	81	12.00	131	8.00	181	NS	231	NS	281	9.00		
32	NS	82	NS	132	2.00	182	NS	232	NS	282	NS		
33	3.00	83	NS	133	NS	183	2.00	233	NS	283	NS		
34	NS	84	50.00	134	NS	184	3.00	234	NS	284	5.00		
35	NS	85	25.00	135	45.00	185	NS	235	NS	285	5.00		
36	7.50	86	NS	136	5.00	186	NS	236	40.00	286	NS		
37	4.00	87	NS	137	4.00	187	NS	237	NS	287	NS		
38	10.00	88	NS	138	7.00	188	NS	238	8.00	288	NS		
39	6.04	89	NS	139	NS	189	NS	239	NS	289	NS		
40	21.00	90	12.00	140	3.50	190	NS	240	NS	290	30.00		
41	NS	91	14.00	141	5.00	191	4.00	241	NS	291	NS		
42	NS	92	7.00	142	3.00	192	NS	242	10.00	292	10.00		
43	25.00	93	NS	143	NS	193	5.00	243	NS	293	NS		
44	20.00	94	15.00	144	NS	194	4.00	244	NS	294	3.00		
45	NS	95	NS	145	4.50	195	5.00	245	10.00	295	NS		
46	NS	96	13.00	146	3.00	196	5.00	246	10.00	296	31.00		
47	17.00	97	NS	147	2.00	197	2.00	247	10.00	297	12.00		
48	3.00	98	NS	148	15.00	198	9.50	248	NS	298	275.00		
49	15.00	99	NS	149	10.00	199	9.50	249	NS	299	NS		
50	NS	100	NS	150	8.00	200	31.00	250	5.00	300	57.50		

96th Auction List

Lot Catalog	Description	Min. Bid

*****	Miscellaneous *****	
1 41	Black test coil pair,NG	Donated 1
2 543	1¢ 1921 WASHINGTON,NG block of 30 (3x10) printers waste crayon line down through all middle stamps some perf seps, pane is folded	20.00 7
3 806	2¢ 1938 J. ADAMS,NG strip with tape repair in second and bottom stamps	5.00 1
4 1552	10¢ 1974 XMAS PEACE TEST stamp for the first self adhesive, with test plate number adhesive piece	4.00 1
5 ATM	ATM Test self adhesive sheet,NH	25.00 7
6 RB45	1/4¢ Proprietary double impression,LH	4.00 1
*****	Doubled Paper & Splices *****	
7 804	1¢ 1938 WASHINGTON,NG double paper strip of 4, printed on top of splicing tape	5.00 1
8 2277	25¢ 1988 "E" STAMP,NH strip of five with clear tape repair, black destruction marks. Color shift in middle stamp only, misperf in top 2 stamps only. Great combination.	50.00 7
*****	Sheet Stamp Misperfs & Miscuts *****	
9 26	3¢ 1857 WASHINGTON hinged, margin block of 4 with doubled vertical perforations	150.00 1
10 205	5¢ 1882 GARFIELD,U pair with doubled perfs at top	15.00 1
11 374	1¢ 1910 FRANKLIN,NH nice misperf	11.00 1
12 499	2¢ 1917 WASHINGTON,NH top stamp normal. Middle stamp's lower perfs 1/3 down into bottom stamp (blind perfs)	27.00 1
13 591	10¢ 1925 MONROE,NH expensive stamp with misperf. Rare!. Normal Scott \$115.	23.00 1
14 702	2¢ 1931 RED CROSS,NH pair with crazy perfs and red shift up and to the left	15.00 7
15 717	2¢ 1932 ARBOR DAY,NH very nice misperfed pair. Rare!	36.00 1
16 724	3¢ 1932 W. PENN,NH pair with crazy perfs	15.00 7
17 742	3¢ 1934 MT.RAINIER,NH very nice misperf showing parts of two stamps from two panes	23.00 1
18 743	4¢ 1934 MESA VERDE,NH strip of 5 with crazy perfs and appendages. some perf seps between second and third stamps in margin	40.00 7
19 804	1¢ 1938 WASHINGTON,NH strip of three with shifted blind perfs	3.00 1
20 901	3¢ 1940 NATL.DEF.,NG Block of 12, 3 pairs with blind perfs or one perf hole	3.00 7
21 989	3¢ 1950 FREEDOM,NH very nice misperf	14.00 1
22 1132	4¢ 1959 U.S.FLAG,NH nice misperf	7.00 1
23 1139	4¢ 1960 WASHINGTON,NH pair with angled misperf	2.00 1
24 1180	5¢ 1963 GETTYSBURG,NH very nice misperf Rare!	11.00 1
25 1197	4¢ 1962 LOUISIANA,NH great misperf single	18.00 1
26 1202	4¢ 1962 S.RAYBURN,NH Strip of five with normal perfs plus set of inverted hortizontal perfs. Rare! ten strips known	135.00 1
27 1237	5¢ 1963 SCIENCES,NH very nice misperf	12.00 1
28 1284	6¢ 1966 ROOSEVELT,NH misperfed block of 4	15.00 7
29 1286A	12¢ 1968 H.FORD,NH very nice misperf	10.00 1
30 1287	13¢ 1967 J.KENNEDY,NH Misperfed plate block creates a 3 cent Kennedy	20.00 7
31 1289	20¢ 1967 G.MARSHALL,NH Very nice misperf. Dull gum.	9.00 1
32 1289	20¢ 1967 G.MARSHALL,NH Very nice misperf. Shiny gum	9.00 1

96th Auction List

Lot Catalog	Description	Min. Bid

33 1289a	20¢ 1967 G.MARSHALL,NH very nice change of legend misperf. Dull gum	10.00 1
34 1291	30¢ 1968 JOHN DEWEY,NH very nice two way misperf	13.00 1
35 1292	40¢ 1968 T.PAINE,NH misperfed block	3.00 7
36 1293	50¢ 1968 LUCY STONE,NH very nice change of design misperf	10.00 1
37 1294	\$1.00 1967 E.O'NEILL,NH very nice change of legend misperf	15.00 1
38 1333	5¢ 1967 URBAN PLAN,NH extremely nice misperf. Rare!	14.00 1
39 1335	5¢ 1967 T.EAKINS,NG huge misperf	7.00 1
40 1336	5¢ 1967 XMAS CHILD,NG major multiple color shifts	15.00 1
41 1356	6¢ 1968 MARQUETTE,NH misperfed plate block	3.00 7
42 1369	6¢ 1969 AM.LEGION,NH Plate block with two top stamps very long	25.00 8
43 1393D	7¢ 1972 FRANKLIN,NH Nice misperf. Dull gum	5.00 1
44 1393D	7¢ 1972 FRANKLIN,NH Misperf. Shiny gum	2.00 1
45 1394	Really nice two way misperf,NH	12.00 1
46 1399	18¢ 1974 BLACKWELL,NH Misperf. Scarce!	4.00 1
47 1400	21¢ 1973 GIANNINI,NH very nice misperf	9.00 1
48 1414	6¢ 1970 NATIVITY,NH very nice misperf. Fingerprint on gum.	8.00 1
49 1452	6¢ 1972 WOLF TRAP,NH Plate block with small misperf	3.00 8
50 1484	8¢ 1973 GERSHWIN,NH very nice change of legend misperf	12.00 1
51 1488	8¢ 1973 COPERNICUS,NG black color shift and perf shift	6.00 2
52 1502	15¢ 1973 INVENTIONS,NG blind perfs, appears imperf	12.00 2
53 1525	10¢ 1974 V.F.W.,NH misperf with bottom legend on top	3.00 2
54 1580	10¢ 1975 XMAS CARD,NH huge perf shift	14.00 2
55 1590	9¢ 1977 ASSEMBLY,NH Misperfed plate block of six	25.00 8
56 1591	9¢ 1975 ASSEMBLY,NH block of 4 with 7mm vertical perf shift. 9¢ on the wrong side of the stamp	7.00 8
57 1592	10¢ 1977 PETITION,NH mis-set perf shifted block of 6,. Jumbo sized middle stamp "use zip code" inside of stamp	25.00 8
58 1593	11¢ 1975 PRESS,NH misperfed plate block	5.00 8
59 1683	13¢ 1976 TELEPHONE,NH very nice change of design misperf	14.00 2
60 1726	13¢ 1977 YORK TOWN,NH ME block with nice misperf	65.00 8
61 1732	13¢ 1978 CAPT.COOK,NH nice two way misperf	11.00 2
62 1734	13¢ 1978 INDIAN HD.,NH Zip block with nice two way misperf	35.00 8
63 1756	15c 1978 George Cohan,NH very nice misperf single	9.00 2
64 1757	\$1.04 1978 CAPEX SHT.,NH plate block with small misperf	8.00 9
65 1758	15¢ 1978 PHOTOGRAPH,NH great misperf	18.00 2
66 1759	15¢ 1978 VIKING,NH Plate block with nice misperf. Great topic!	45.00 8
67 1804	15¢ 1980 B.BANNEKER,NH very nice misperf	12.00 2
68 1823	15¢ 1980 E.BISSELL,NH nice misperf	10.00 2
69 1833	15¢ 1980 EDUCATION,NH very nice change of design misperf	14.00 2
70 1845	2¢ 1982 STRAVINSKY,NH Plate block, perf shift puts plate number inside stamp	20.00 8
71 1848	5¢ 1983 PEARL BUCK,NH two misperfs	11.00 2
72 1856 var	14¢ 1985 S.LEWIS,NH strip with 11 heads. Imperf between right pair. Rare! 10 strips known	110.00 2
73 1857	17¢ 1981 R.CARSON,NH copyright block with nice misperf	20.00 8
74 1862	20¢ 1984 H.TRUMAN,NH very nice misperf	10.00 2
75 1869	50¢ 1985 ADM.NIMITZ,NH very nice misperf	9.00 2
76 1874	15¢ 1981 E.DIRKSEN,NH very nice misperf. Rare!	14.00 2
77 1361	6¢ 1968 J.TRUMBULL,NH nice misperf	4.00 2

96th Auction List

Lot Catalog	Description	Min. Bid

78 1950	20¢ 1982 ROOSEVELT,NH block of 4 with 6mm vertical perf shift	18.00 9
79 2011	20¢ 1982 AGING,NH zip block with very nice misperf	50.00 9
80 2013	20¢ 1982 M.WALKER,NH very nice misperf	14.00 2
81 2014	20¢ 1982 GARDEN,NH nice misperf RARE!	10.00 2
82 2015	20¢ 1982 LIBRARIES,NH Zip block, with nice change of legend misperf	60.00 9
83 2036	20¢ 1983 SWEDEN,NH nice misperf	10.00 2
84 2041	20¢ 1983 BRIDGE,NH very nice misperf	14.00 2
85 2052	20¢ 1983 TREATY,NH Misperf	4.00 2
86 2066	20¢ 1984 ALASKA,NH Pair with very nice misperf	25.00 2
87 2072	20¢ 1984 HEARTS,NH very nice misperf	15.00 2
88 2073	20¢ 1984 C.WOODSON,NH very nice misperf	12.00 2
89 2075	20¢ 1984 CRED.UNION,NH very nice misperf. Rare!	14.00 2
90 2098	20¢ 1984 DOGS,NH very nice change of legend misperf	12.00 2
91 2100	20¢ 1984 DOGS,NH very nice change of legend misperf	12.00 2
92 2102	20¢ 1984 CRIME,NH very nice misperf and skew with gutter	11.00 2
93 2107	20¢ 1984 MADONNA,NH extremely nice misperf	16.00 2
94 2108	20¢ 1984 XMAS SANTA,NH extremely nice misperf	15.00 2
95 2114	22¢ 1985 FLAG,NH margin block of four, misperfed 5+mm high	5.00 9
96 2142	22¢ 1985 OLYMPICS,NH great misperf	36.00 2
97 2144	22¢ 1985 R.E.ADMIN.,NH very nice misperfed pair with extra wide bottom stamp	27.00 2
98 2240,1	22¢ 1986 FOLK ART,NH pair with nice misperf	20.00 2
99 2250	22¢ 1987 E.CARUSO,NH misperf block of 4	8.00 9
100 2390,1	25¢ 1988 CAROUSEL,NH pair with nice misperf	20.00 2
101 2416	25¢ 1989 SO. DAKOTA,NH misperf	5.00 2
102 C23	6¢ 1938 EAGLE,NH block with crazy perfs	20.00 9
103 C62	13¢ 1961 BELL,NG perf shift single plus normal stamp for reference	6.00 2
104 C85	11¢ 1972 SKIING,NG 2 way perf shift	8.00 3
105 J80	1¢ 1931 POST. DUE,NH nice change of legend misperf	16.00 3
106 J81	2¢ 1931 POST. DUE,NH Great two-way misperf. Used but with full gum.	16.00 3
107 J97	10¢ 1959 POST. DUE,NH verf nice misperf. Scarce	11.00 3
108 S6	25¢ Savings stamp,NH very nice misperf	11.00 3
109 S7	25¢ Savings stamp,NH very nice misperf	11.00 3
*****	Sheet Stamp Imperforates *****	
110 530	3¢ 1918 WASHINGTON Plate block of 6, imperforate at top. Hinged on right two vertical rows. Philatelic Foundation certificate from 1983	180.00 9
111 1729a	13¢ 1977 CHRISTMAS,NH Imperf pair. Missing a few bits of gum. Scott \$75.	18.00 3
112	No lot	
113 1843a	15¢ 1980 XMAS TOYS,NH Imperf pair. Scott \$85.	36.00 9
114 1856b	top sheet strip of 4 with imperf in the middle,NH	9.00 3
115 2517a	29¢ 1991 "F" FLOWER,NH Imperf pair. Scott \$750.	250.00 3
*****	Coil Stamp Misperforations *****	
116 1055	2¢ 1954 JEFFERSON,NH misperfed line strip of 3	10.00 3
117 1304	collection of 5 misperfed coil pairs 1504,1625,2280,2608,2259	14.00 3
118 1305E	15¢ 1978 O.W.HOLMES,NH very nice misperfed pair. Wet gum.	6.00 3
119 1509	10¢ 1973 FLAGS,NH pair with very nice misperf	8.00 3
120 1616	9¢ 1976 ASSEMBLY,NH very nice misperfed pair	6.00 3
121 1625	13¢ 1975 FLAG,NH pair with very nice misperf	8.00 3

96th Auction List

Lot Catalog	Description	Min. Bid

122 1811	1¢ 1980 INKWELL,NH nice misperfed pair. scarce	2.00 3
123 1907	18¢ 1981 SURREY,NH pair missing four perfs	3.00 3
124 1908	20¢ 1981 FIRE PUMP,NH nice misperfed pair	6.00 3
125 2133	1½¢ 1985 PUSH CART,NH misperf	2.00 3
126 2259	13.2¢ 1988 COAL CAR,NH pair with very nice misperf	6.00 3
127 2280	25¢ 1988 FLAG,NH misperfed pair	3.00 3
128 2280	25¢ 1988 FLAG,NH Misperfed strip of 5 with plate #3 on middle stamp	32.00 3
129 2609	29¢ 1992 FLAG,NH great misperfed plate number strip of six with plate #14 in exact middle	52.50 3

*****	Coils Stamp Miscuts *****	
130 599	2¢ 1923 WASHINGTON,LH line pair with part plate #	3.00 3
131 839	1¢ 1939 WASHINGTON,NH line pair with part plate number. Scarce	3.00 3
132 842	3¢ 1939 JEFFERSON,NH line strip with part plate # 21991, plus right pair missing bottom perf.	6.00 3
133 842	3¢ 1939 JEFFERSON,NH two line strips with 100% reconstructed # 23347	11.00 3
134 1059a/13044½¢	1959 HERMITAGE and 25 cent Paul Revere,NH line pairs with partial plate numbers	3.50 3
135 1278	1¢ 1968 JEFFERSON,NH line pair with slight part of plate number	1.00 3
136 1338A	6¢ 1969 FLAG,NH miscut showing top of ball on the bottom	2.00 3
137 1615C	8.4¢ 1978 PIANO,NH very nice miscut pair	15.00 3
138 1618	13¢ 1975 BELL,NH line pair miscut	1.00 3
139 1618C	15¢ 1978 FLAG,NH miscut coil pair	17.00 3
140 1891	18¢ 1981 FLAG,NH miscut coil pair	7.00 3
141 1897	1¢ 1983 OMNIBUS,NH Miscut extra wide line strip of 5 with plate #6 on top and partially on the bottom	15.00 3

*****	Coil Stamp Imperforates *****	
142 1058	4¢ 1958 LINCOLN,NH imperf pair, disturbed gum	30.00 4
143 1615f var	8.4¢ Piano,NH imperf pair. Newark, NJ precancel	14.00 4
144 2133b	1½¢ 1985 PUSH CART,NH imperf pair. Scott \$55.	25.00 4
145 2452c	5¢ 1990 CIR. WAGON,NH Imperf pair. Usual centering. Scott \$900	245.00 4
146 2603b	10¢ 1993 EAGLE,NH imperf pair. Scott \$30.00	11.00 4

*****	Color Smears *****	
147 1047	20¢ 1956 MONTICELLO,NH very nice blue smear over 20 cent	3.00 4
148 1108	3¢ 1958 GUNSTON,NH very nice green ink smear in margin. Only known EFO on this issue.	3.00 4
149 1278	1¢ 1968 JEFFERSON,NH strip of 4 with nice green smear on all stamps	3.50 4
150 1343	6¢ 1968 LAW & ORDER,NH Plate block with nice red ink smear on all stamps	20.00 9
151 1362	6¢ 1968 WATERFOWL,NH ME block of six with smear on right three stamps	7.00 10
152 1618C	15¢ 1978 FLAG,NH strip of three, blue smeared on center stamp and one perf missing	5.00 4
153 1891	18¢ 1981 FLAG,NH strip of 5 with blue streak on top of all stamps	4.50 4
154 1896a	20¢ 1981 FLAG,NH pair with blue smear	2.50 4
155 2072	20¢ 1984 HEARTS,NH strip of 3 with orange smear on center stamp	3.00 4
156 2094	20¢ 1984 H.MELVILLE,NH block of 6, with blue streak on 5 of 6 stamps	8.00 10
157 2143	22¢ 1985 LOVE,NH strip of 4 with purple smear across Love on all stamps	4.50 4

96th Auction List

Lot Catalog	Description	Min. Bid

*****	Over and Under Inking *****	
158 117	12¢ 1869 ADRIATIC,NG Mint. No Gum. Severly underinked. Scott for normal \$950.	270.00 4
159 518	\$1.00 1917 FRANKLIN,U Complete offset on the back	13.00 4
160 525	1¢ 1918 WASHINGTON,NH extremely underinked	7.00 4
161 900	2¢ 1940 NATL.DEF.,NH pair with left stamp under-inked and right stamp a bit light	14.00 4
162 935	3¢ 1945 NAVY,NG pair, heavily over-inked	3.00 4
163 953	3¢ 1948 G.W.CARVER,NG block of 4, greatly over-inked	10.00 10
164 958	5¢ 1948 SW.PIONEER,NG block(4) heavily over-inked	9.00 10
165 966	3¢ 1948 PALOMAR,NG heavily over-inked block of four	10.00 10
166 1509	10¢ 1973 FLAGS,NH pair of the sheet stamps with vertical blue line on perfs	2.00 4
167 1608	50¢ 1979 LAMP,NH Great black offset on back	25.00 4
168 1610	\$1.00 1979 RUSH LAMP,NH very nice black offset on back	25.00 4
169 1726	13¢ 1977 YORK TOWN,NH way, way overinked and smeared	8.00 4
170 1864	30¢ 1984 F.LAUBACH,NH ultra light. Missing practically all the dark green.	25.00 4
171 1894	20¢ 1981 FLAG,NH plate strip of 20. Top two stamps normal, other 18 missing various amounts of blue. Great combo piece.	225.00 10
172 1895	20¢ 1981 FLAG,NH Pair missing much of the red in the stripes	10.00 4
173 2014	20¢ 1982 GARDEN,NH offset on back	9.00 4
174 2115	22¢ 1985 FLAG,NH Great strip of 8. Overinking starts small and covers the last three stamps with black and a thick red line. Great piece for the flag specialist	100.00 4
175 2177	15¢ 1988 BILL CODY,NH pair with dry print and normal attached	12.00 4
176 2255	7.6¢ 1988 CARRETA,NH "white wheel" variety, coil pair with a normal stamp for reference	3.00 4
177 3012	32¢ 1995 CHRISTMAS,NH pane of 20. Bottom middle stamp totally missing blue on top left shows up as yellow.	32.00 10
178 RW46	\$7.50 1979 DUCK STAMP,NH Duck plate block with words on the back very light on all four stamps.	32.00 11
***** Misregistration & Other Color Freaks *****		
179	collection of 86 different color shifts,NH	225.00 4
180 504	5¢ 1917 WASHINGTON,NH creased single with left frame line "pulled" down	4.00 4
181 651	2¢ 1929 G.R.CLARK,NH black vignette shift to the ight	3.50 4
182 702	2¢ 1931 RED CROSS,NH cross shifted up into legend	3.00 4
183 702	2¢ 1931 RED CROSS,NH very nice red shift up and to the left	5.00 4
184 703	2¢ 1931 YORKTOWN,NH very nice vignette shift to he left	4.00 4
185 911	5¢ 1943 NORWAY,NH block of six with lower middle stamp has "N" really screwed up and two other letters partially printed.	9.00 10
186	No lot	
187 1016	3¢ 1952 RED CROSS,NG block of 4, both left stamps defective red cross	20.00 11
188 1111	8¢ 1958 S.BOLIVAR,NG almost missing wreath, normal for comparison	10.00 4
189 1190	4¢ 1961 NURSING,NH Plate block with small black color shift to the left	4.00 11
190 1206	4¢ 1962 EDUCATION nice black color shift up, disturbed gum	8.00 4
191 1213	5¢ 1962 WASHINGTON,NG Ghost plate number for block	6.00 9

96th Auction List

Lot Catalog	Description	Min. Bid

192 1271	5¢ 1965 FLORIDA,NH Plate block with color shift up	6.00 11
193 1308	5¢ 1966 INDIANA,NH very nice blue color shift to right	7.00 4
194 1324	5¢ 1967 CANADA,NH Plate block with color shift to the left	5.00 11
195 1331-32	5 cent Space Walk, red shifted up zip block of 4,NH	15.00 11
196 1356	6¢ 1968 MARQUETTE,NH extremely nice black color shift down	23.00 5
197 1359	6¢ 1968 L.ERIKSON,NG color shift and normal stamp for reference	8.00 5
198 1382	6¢ 1969 FOOTBALL,NG red color shifted up and to the left	8.00 5
199 1384	6¢ 1969 CHRISTMAS,NH "New Haven" precancel offset on the back, nothing on the front	14.00 5
200 1384	6¢ 1969 CHRISTMAS,NG missing green in tree line (1384c?)	9.00 5
201 1384	6¢ 1969 CHRISTMAS,NG block of 4, part of margin block, one of the red plate numbers is missing	7.00 11
202 1385	6¢ 1969 CHILDREN,NG multiple color shifts	6.00 5
203 1387-90	6¢ 1970 Natural History,NH Plate block with color shift. Most noticeable on eagle and boat	14.00 11
204 1423	6¢ 1971 WOOL IND.,NG multiple color shifts	5.00 5
205 1426	8¢ 1971 MISSOURI,NH Plate block with small color shift creates doubling throughout stamp.	14.00 12
206 1438	8¢ 1971 DRUG ABUSE,NG multiple color shifts, normal stamp for comparison	5.00 5
207 1454	15¢ 1972 MCKINLEY,NH multiple color shift	9.00 12
208 1455	8¢ 1972 FAMILY,NG black color shift moves denomination from right to left side.	7.50 5
209 1460	6¢ 1972 OLYMPICS,NH pair, broken red ring in left stamp	5.00 5
210 1460	6¢ 1972 OLYMPICS,NG vertical strip of three, top stamp has incomplete blue wheel at bottom	2.00 12
211 1464-7	8¢ Wildlife Conservation,NH Plate block with nice color shift	16.00 12
212 1468	08¢ 1972 MAIL ORDER,NH plate block of 12 , "double tailed cat" variety	7.00 12
213 1469	8¢ 1972 MEDICINE,NH plate block of 6, orange figure shifted down 5 mm	27.00 12
214 1469	8¢ 1972 MEDICINE,NG nice color shift with normal stamp for comparison	12.00 5
215 1472	8¢ 1972 XMAS SANTA,NH Zip block with nice color shift. Double bugle	20.00 13
216 1473	8¢ 1972 PHARMACY,NH Zip block with blue color shift	3.00 13
217 1480-83	8¢ 1973 BOSTON TEA PARTY,NG block missing most of dark blue, note right-most ship and man's hat (see normal copy behind)	25.00 13
218 1485	8¢ 1973 R.JEFFERS,NH nice color shift down	7.00 5
219 1488	8¢ 1973 COPERNICUS,PB4,NH nice gold color shift	9.00 13
220 1504/..	collection of ten different color shifts,NH	16.00 5
221 1504	8¢ 1973 CATTLE,NG color shift and normal stamp for reference	Donated 5
222 1538-41	10¢ 1974 Mineral Heritage,NH block with color shift	7.00 13
223 1551	10¢ 1974 CHRISTMAS,NH plate strip of 12 with yellow color shift to the right. Shows well in margin	14.00 NI
224 1555/..	collection of 20 different color shifts,NH	16.00 5
225 1555	10¢ 1975 D.GRIFFITH,NH Plate block with small color shift creates doubling letters	5.00 13
226 1559	8¢ 1975 LUDINGTON,NH obverse normal. Reverse nice green color shift that looks like a misperf. Rare !	14.00 5
227 1580	10¢ 1975 XMAS CARD,NH single with nice color shift	5.00 5

96th Auction List

Lot Catalog	Description	Min. Bid

228 1592	10¢ 1977 PETITION,NH strip of 4 with purple line across top of all stamps	3.00 5
229 1608	50¢ 1979 LAMP,NH very nice tan and orange color shift down.	15.00 5
230 1608	50¢ 1979 LAMP,NH very nice black color shift down	12.00 5
231 1610	\$1.00 1979 RUSH LAMP,NH nice orange color shift to the right	8.00 5
232 1611	\$2.00 1978 TABLE LAMP,NH extremely nice dark green color shift down.	25.00 5
233 1622	13¢ 1975 FLAG,NH block of 12 with slight lettering breakdown and line streaks on most stamps	15.00 13
234 1688	24¢ 1976 WASHINGTON,NH souvenir sheet with "USA 24¢" shifted down 3mm. Normal sheet for comparison. Slight indentation in left margin.	23.00 NI
235 1725	13¢ 1977 CALIFORNIA,NH plate block with black color shift to the left. Most obvious on left tree.	11.00 13
236 1725	13¢ 1977 CALIFORNIA,NH Zip block with great black color shift	110.00 13
237 1730	13¢ 1977 CHRISTMAS,NH Zip block with nice black color shift	20.00 14
238	No lot	
239 1838-41	15¢ 1980 Architecture,NH Block with red offset on the back	10.00 14
240 1895	20¢ 1981 FLAG,NH Pair with "Illinois" shift. Field of stars black, 5mm blue color shift	27.00 5
241 1910	18¢ 1981 RED CROSS,NH very nice multiple color shift single	12.00 5
242 2006/2008	20¢ 1982 SUN ENERGY,NH vertical strip of 5 with blue streak through all stamps	4.00 5
243 2026	20¢ 1982 MADONNA,NH strip of 3 with green tint on center stamp	3.00 5
244 2026	20¢ 1982 MADONNA,NH pair with black spot on left stamp	Donated 5
245 2031	20¢ 1983 SCI. & IND.,NH plate block with small black spot on upper right stamp	4.00 14
246 2031	20¢ 1983 SCI. & IND.,NH great color shift	20.00 5
247 2047	20¢ 1983 HAWTHORNE,NH strip of 3 with blue spot on middle stamp	4.00 5
248 2060	20¢ 1983 STREETCAR,NH very nice black color shift down	12.00 5
249 2062	20¢ 1983 STREETCAR,NH very nice black color shift down	12.00 5
250 2063	20¢ 1983 MADONNA,NH block of 6 with two red spots	5.00 14
251 2063	20¢ 1983 MADONNA,NH two red spots on lower right	1.00 5
252 2065	20¢ 1983 M.LUTHER,NH pair with small white spot on right stamp	Donated 5
253 2202	22¢ 1986 PUPPY LOVE,NH zip block with blue line in top margin	4.00 14
254 2224	22¢ 1986 LIBERTY,NH pair with small blue spot of face of left stamp	2.00 5
255 2245	22¢ 1986 XMAS,NH Pink color shift up	6.00 5
256 2248	22¢ 1987 LOVE,NH block of 12, with blueish tint on 4 stamps in the middle	7.00 14
257 2281	25¢ 1988 HONEYBEE,NH pair missing most of the yellow in the middle of the leaves	23.00 5
258 2281	25¢ 1988 HONEYBEE,NH pair with splatter of yellow ink	14.00 5
259 2285d	25¢ 1988 OWL BKLT.,NH pair from booklet pane with very nice color shift	5.00 6
260 2362a	22¢ 1987 LOCOMOTIVE,NH all engines shifted down 1.5mm	8.00 6
261 2471	25¢ 1990 LIGHTHOUSE,NH color shift puts denomination at bottom	15.00 6
262 2552a	29¢ 1991 MEDAL,NH pane with light blue background shifted down into top of lettering	9.00 14
263 2560	29¢ 1991 BASKETBALL,NH nice black color shift on a great topic.	32.00 6
264 2980	32¢ 1995 SUFFRAGE,NH very nice black color shift down.	4.00 6

96th Auction List

Lot Catalog	Description	Min. Bid

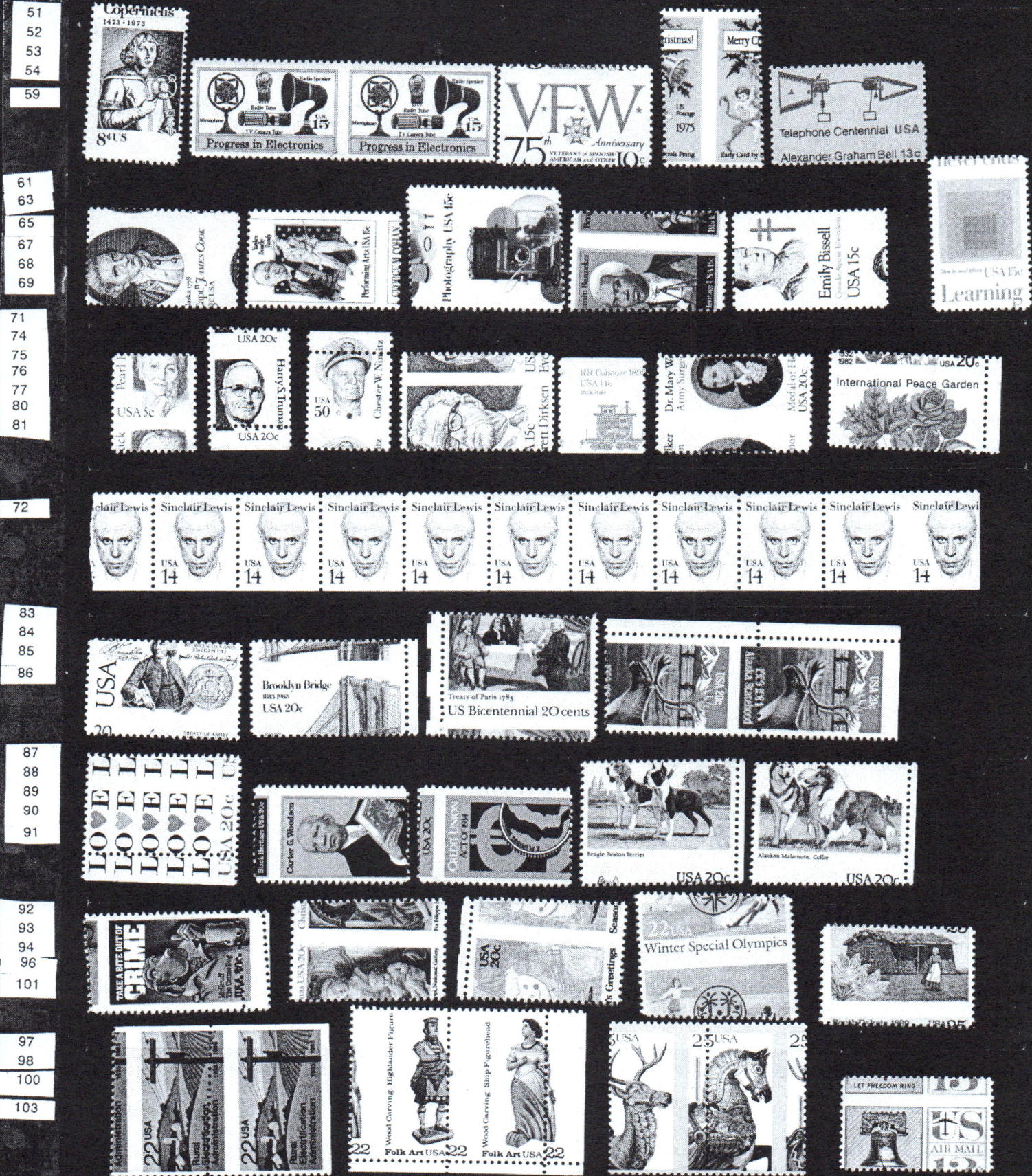
265 2980	32¢ 1995 SUFFRAGE,NH single black shifted down 1.5mm and slightly to the right	2.00 6
266 C59	25¢ 1960 LINCOLN,NG ghost doubling of the plane	6.00 6
267 C81	21¢ 1971 USA & JET,NG ghost doubling, Red, blue (and pink?) on white	12.00 6
268 C85	11¢ 1972 SKIING,NH Plate strip of 10 with red color shift down, note skiers	15.00 14
269 C87	18¢ 1974 ST.LIBERTY,LH ME block with very nice color shift to the right. Hinged in margin only	50.00 15
270 C89	25¢ 1976 PLANE,NH nice offset on the back	25.00 6
271 C91-2	31¢ 1978 WRIGHTS,NH Zip block with nice color shift up	35.00 15
272 C98	40¢ 1980 P.MAZZEI,NH Color shift up produces double impression	2.00 6
273 J94	6¢ 1959 POST. DUE,NH very nice black color shift to the right	7.00 6
274 RB1	1¢ Proprietary vignette shifted to the right. On green paper.,NG Scott \$9 for normal	4.00 6
275 R209	Single, with perfect offset on the back. Rare!,NH	40.00 6
*****	Color-Omitted Stamps *****	
276 ?	Rotary press single. Has the proper gum but no observable impression.,NH	7.00 6
277 1197 var	4¢ 1962 LOUISIANA,NH missing all the red. Caused by a large misperf.	135.00 6
278 1384c	6¢ 1969 CHRISTMAS,NH plate strip of 10 missing the light green. Scott \$225. as singles	75.00 15
279 2015	20¢ 1982 LIBRARIES,NH Missing both red and black, strong impression caused by double sheeting. Copy of APES certificate for the sheet. 100 known!	100.00 6
280 2041	20¢ 1983 BRIDGE,NH Stamp missing all the blue (only color). Light impression obvious in top legend. Caused by double sheeting. 100 Known.	30.00 6
281 2154	22¢ 1985 WWI VETS,NH completely missing the red as a result of misperf. Rare!	100.00 6
282 2474b	25¢ 1990 LIGHTHOUSE,NH unexploded booklet with four panes, all missing the white. Scott \$320.	135.00 15
283 2517	29¢ 1991 "F" FLOWER,NH appears to be missing all of the red	32.00 6
*****	Booklet Freaks & Errors *****	
284 720b	3¢ 1932 WASHINGTON,NH miscut pane with 15% UL #21011	11.00 NI
285 807a	3¢ 1938 JEFFERSON,NH Rare miscut booklet pane with 15% LR 21998	7.00 NI
286 1035/1213	mix of 8 different miscut panes with partial plate numbers,NH	11.00 15
287 1036a	4¢ 1954 LINCOLN,NH miscut booklet pane with 60% LL 27188	4.00 NI
288 1213a	5¢ 1962 WASHINGTON,NH matched pair of miscut booklet panes w 40% LL and 55% UL 27439	9.00 NI
289 1278a	1¢ 1968 JEFFERSON,NH pair of matched miscut booklet panes 35% UL & 45% LL of 32905	7.00 NI
290 1280a	2¢ 1966 F.WRIGHT,NH miscut booklet pane. 45% UL 32966	4.00 NI
291 1280c	2¢ 1966 F.WRIGHT,NH 11 booklet panes with average 30% plate # showing (lower)	18.00 NI
292 1280c	2¢ 1966 F.WRIGHT,NH booklet pane with 50% plate # 32966 (lower)	3.00 NI
293 1280c	2¢ 1966 F.WRIGHT,NH booklet pane with 50% #32967 (lower)	3.00 NI
294 1284c	6¢ 1966 ROOSEVELT,NH miscut pair of booklet panes showing 30% UL & LL of 29557	6.00 NI
295 1288Bc	15¢ 1968 O.W.HOLMES,NH misperfed pair from pane	4.00 6

96th Auction List

Lot Catalog	Description	Min. Bid

296 1288Bc	15¢ 1968 O.W.HOLMES,NH misperfed pane with EE bar down the right side.	18.00 15
297 1305	6¢ 1968 ROOSEVELT,NG miscut pane of 8	9.00 15
298 1395b	8¢ 1971 EISENHOWER,NH booklet pane with 40% #32910 showing	3.00 NI
299 1395b	8¢ 1971 EISENHOWER,NH booklet pane with 40% of #32911 (upper)	3.00 NI
300 1395b	8¢ 1971 EISENHOWER,NH unexploded booklet with very nice part plate # 32908 32909 and 32904 UL 50% of numbers	18.00 NI
301 1395b	8¢ 1971 EISENHOWER,NH eight panes with plate # 32908,9,10 and 11. Both UL and LL. All 50% or more	40.00 NI
302 1510b	10¢ 1973 JEFFERSON,NH booklet pane with 5mm vertical miscut	8.00 15
303 1510c	10¢ 1973 JEFFERSON,NH booklet pane with 2.5 mm vertical perf shift	8.00 16
304 2443a	15¢ 1990 UMBRELLA,NH unexploded booklet with blue blob of ink on lower left stamp on front pane	7.00 16
305 BK116	Unexploded booklet with neat printing flaw on cover at right edge.,NH	3.00 16
306 C25a	6¢ 1941 TRANSPORT,NH miscut pane with 40% UL 22979	7.00 NI
307 C39a	6¢ 1949 PLANE,LH miscut pane with 55% U #24142	9.00 NI
308 C39a	6¢ 1949 PLANE,LH miscut pane with 35% UL 24263	7.00 NI
309 C51a	7¢ 1958 JET,NH miscut pane with 30% LL #26176	7.00 NI
310 C64a III	8¢ 1962 CAPITOL,NH miscut pane with 40% LL # 28480	6.00 NI
311 C78a	11¢ 1971 AIRLINER,NH miscut pane with 75% LL # 32964	4.00 NI
312 C79a	13¢ 1973 ENVELOPE,NH VF miscut pane with 60% LL # 34795	4.00 NI
***** Gutters *****		
313 1114	3¢ 1959 LINCOLN,NH block of 4, full gutter at top, disturbed gum	5.00 16
314 1305	6¢ 1968 ROOSEVELT,NG block of 4 with gutter snipe, includes part of next pane.	10.00 16
315 1504	8¢ 1973 CATTLE,NG block of 4 with guttersnipe, includes part of next pane	7.00 16
316 2165	22¢ 1985 MADONNA,NH plate block with full left gutter	18.00 16
***** Stationery *****		
317 UC46a	3 cent purple, postcard missing "I", reads "N GOD WE TRUST"	Donated 6
318 UC50	NH Inverted aerogramme showing color bars on side and color lines on top. Rare !	23.00 NI
319 U86	Double envelope. Outer envelope normal, inner envelope albino. A couple of tears as usual. Rare Cover addressed but probably not posted (not cancelled) cause they could not put the letter in.	9.00 NI
320 U536	4¢ envelope,NH embossing on the inside (envelope made inside out)	7.00 NI
321 U540	3¢ Washington with 1¢ surcharge,,NH overprint shifted way down and to the right	9.00 6
322 U586	16¢ USA envelope overprinted 15¢,,NH offset of the overprint on the back. Scarce	11.00 6
***** Tagging Varieties *****		
323 1314	5¢ 1966 NATL.PARKS,NH tagging offset produces 2 different plate numbers	3.00 16

Remember that the earliest dated bid wins in a tie !!!
Send in your bids now, don't wait til it is too late.

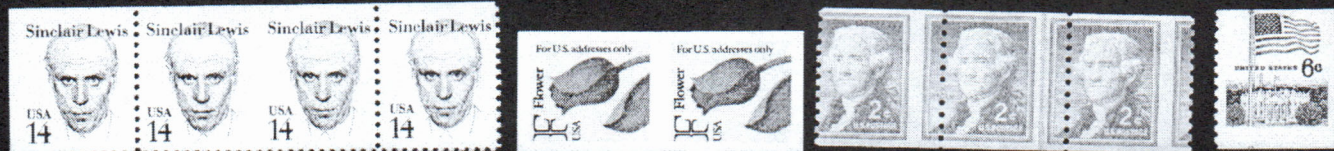


Illustrations 2

104
105
106
107
108
109
111
125



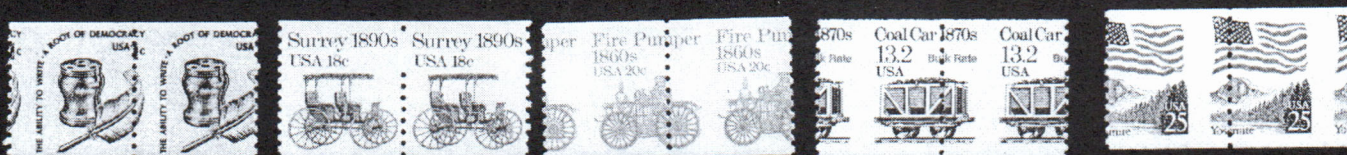
114
115
116
136



117
118
119
120
121



122
123
124
126
127



128
129



130
131
132
134



133
135
137



138
139
140
141



Illustrations 3

142
143
144
145
146

147
148
149
152

153
154
155

157
158
159
160
161

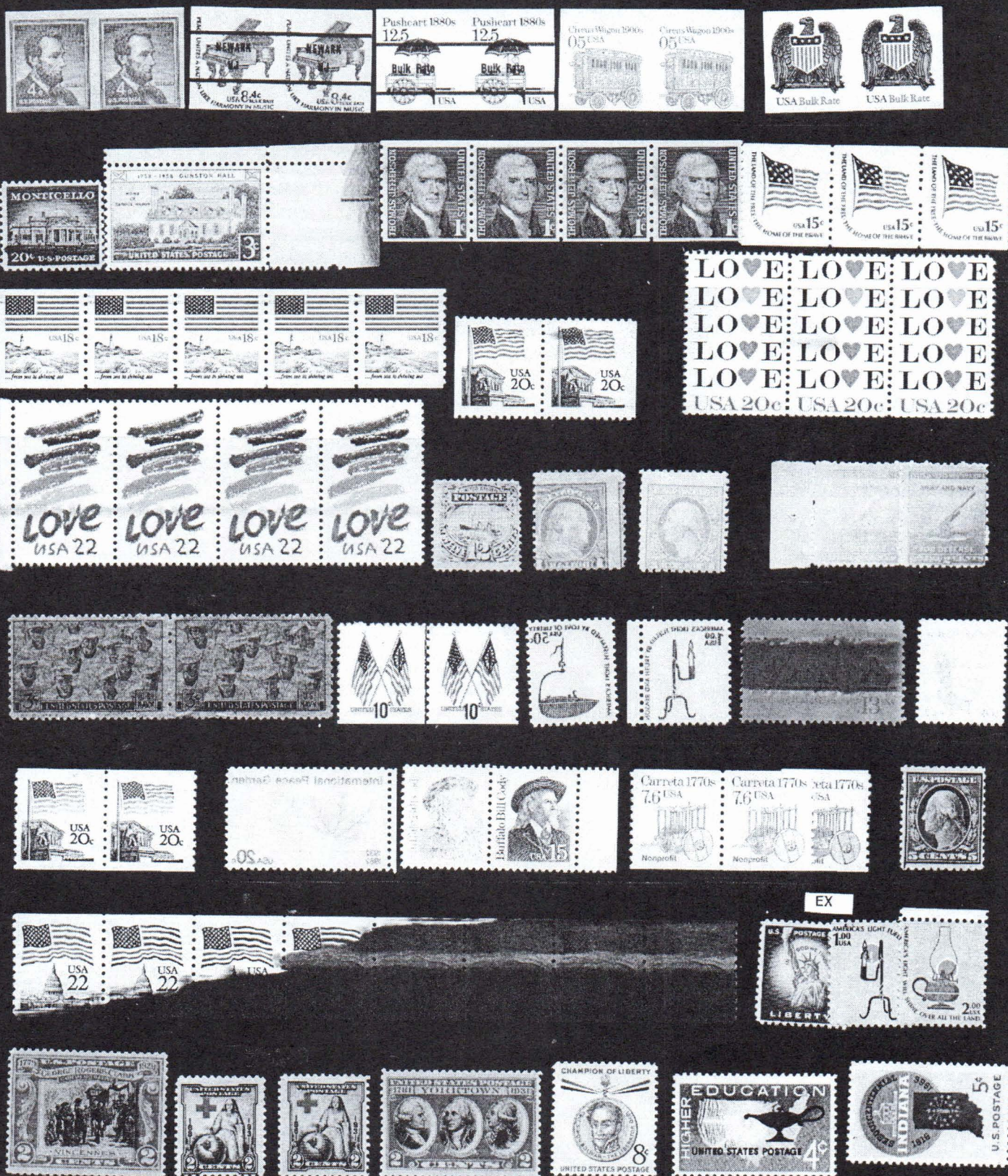
162
166
167
168
169
170

172
173
175
176
180

174

179

181
182
183
184
188
190
193



Illustrations 4

196
197
198
199
200
202
204

206
208
209
214
218

220
221
224

226
227
228
229
230

231
232
240
241
243

242
244
246

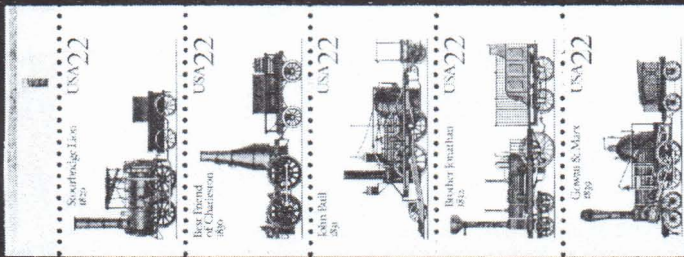
247
248
249
251

252
254
255
257
258



Illustrations 5

259
260
261
263



264
265
266
267
270



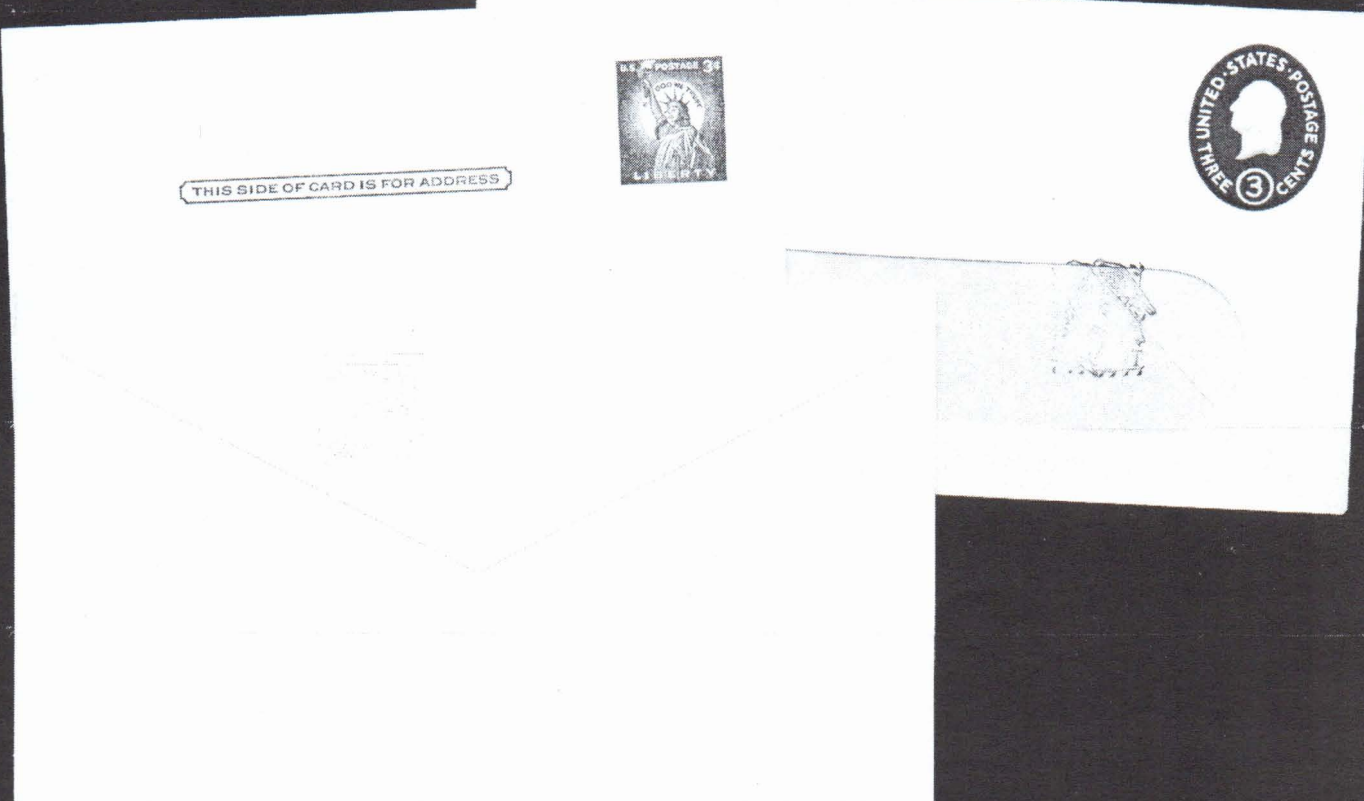
272
273
274
275
276
277
279



280
281
283
295



317
321
322



Illustrations 6

2
8
14

5
16
28

30
20
35

18
41



ATM TEST/DEMONSTRATION SHEET



ATM TEST/DEMONSTRATION SHEET



ATM TEST/DEMONSTRATION SHEET



Postage and Fees - Self-Addressed Stamps - 100 WPA NET • © 1975 WPA

ATM TEST/DEMONSTRATION SHEET



ATM TEST/DEMONSTRATION SHEET



ATM TEST/DEMONSTRATION SHEET



30147

Illustrations 7

42

49

55

56

57

58

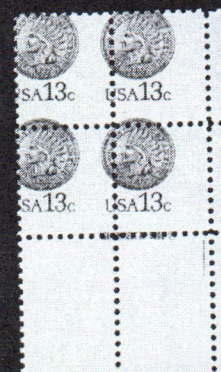
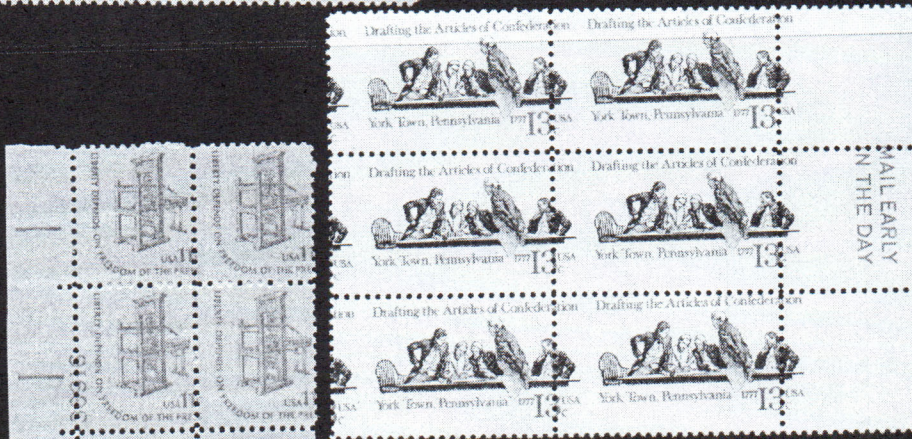
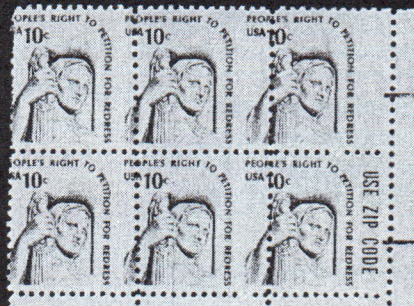
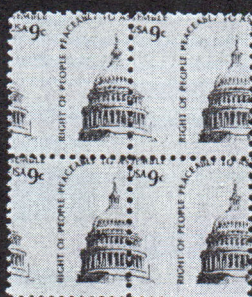
60

62

66

70

73



Illustrations 8

79



78

95



64

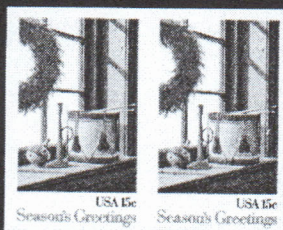
82



99

113

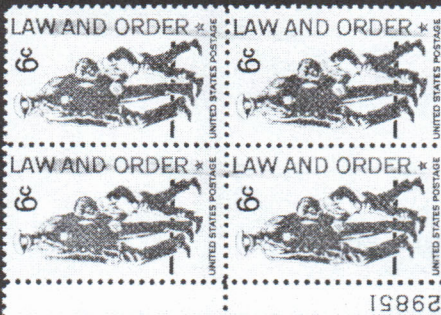
102



110

150

191



Illustrations 9

151

163

164

165

156

185

177



171



Illustrations 10

187

189

178

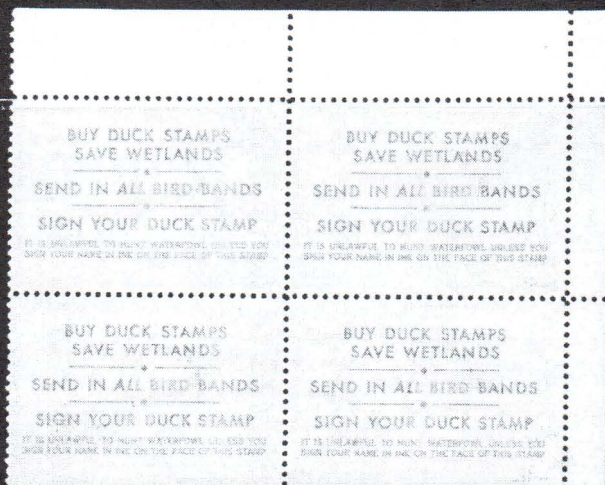
192

194

195

201

203

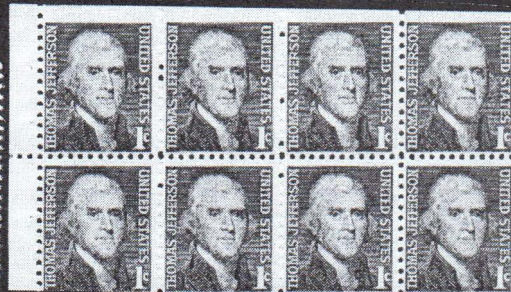


Illustrations 11

207

205

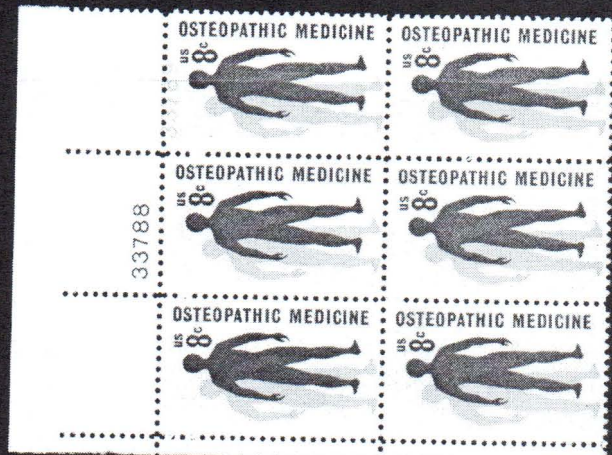
210



211

212

213



Illustrations 12

215

216



217

219



222

225

235

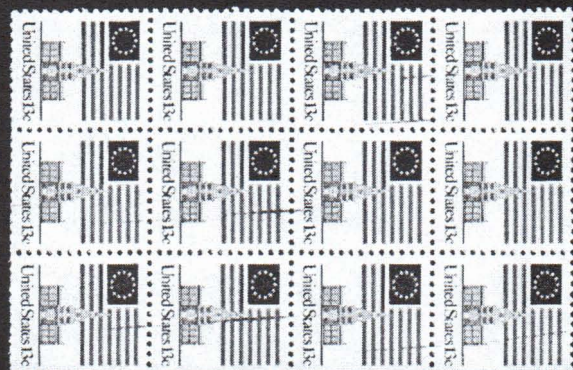


38211



233

236

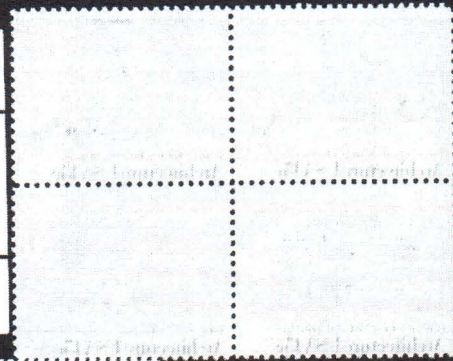


Illustrations 13

237

239

245



250

253



256

268



262



Illustrations 14

271

282

269

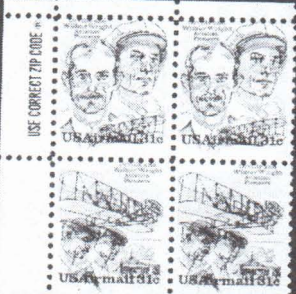
286

302

278

297

298



SOP

ple
e Panel.

EX



Illustrations 15

303

304



© United States Postal Service 1997



305

313

314



315

316



323



Illustrations 16

EFOCC Auction Consignment Form

EFOCC use – only ⇒ AUCTION #:

LOT #:

Consignor: _____ USED Address: _____ _____ _____ Telephone: (____) - _____ Email/Fax: _____ EFOCC Membership No: _____	Country (if not U.S.) _____ _____ Catalog No. _____ _____ Catalog Value: _____ _____	Condition (circle): NH LH HH HR NG Please check if this is a donation lot: <input type="checkbox"/> Please note Minimum Bid: \$ _____
---	---	---

Description of item: {Please note any faults and fasten lots below this line or on the reverse side}

APS Membership No: _____

Instructions: Fill in all information. Attach each lot to the front of one form, using a stock card, face-down glassine or other mount. Use separate rigid sheet for larger lots and attach a completed form. No staples - please. Make sure it is easy for us to remove and re-insert each lot.



Send consignment form(s) with lot(s) to: **Peter L. Rikard, P. O. Box 25623, Richmond, VA 23260**
For your protection, we recommend that you send lot(s) by registered or insured mail.



EFOCC Auction Bid Sheet

Name: _____ EFOCC #: _____ *New Bidders.....APS Membership appreciated: _____*
 Address: _____ Phone: (____) _____ *Please limit my purchases to:*
 City: _____ State: _____ Zip: _____ \$ _____

Please execute the following bids for me in EFOCC Auction # **95**

{Signature - all bid sheets must be signed}

{Date}

Earliest postmark wins tie bids!!

Lot#	Bid	Lot#	Bid	Lot#	Bid	Lot#	Bid	Lot#	Bid	Lot#	Bid

Postage will be charged to the bidder. A 10% buyer's premium will be added to successful bids to EFOCC members; a 12% buyer's premium will be added to non-EFOCC member successful bidders. Mail bid sheets to:
Peter L. Rikard, P. O. Box 25623, Richmond, VA 23260



PERFORATIONS

By John M. Hotchner

Making The EFO Collector More Helpful

Our Editor, Jim McDevitt, does a really good job of including interesting material in our club journal. I want to thank those members who have taken the time to produce contributions for EFOC. And I encourage others to do so. For one thing it is a great way to get your interests and needs out there before the membership.

I have been thinking, though, that we need to find new ways to make the EFOC relevant to every collector in our branch of the hobby, and have come up with an offer I hope will do that, in a way that will help every member. With this issue, we are inaugurating a column titled "Help Wanted". Members who are looking for specific material, who have a technical question about how a stamp came to be as it is, who are embarking on a new research area, are invited to complete the blank below, in 50 words or less, and send it in to me. I will gather these into the column for each issue and get it to the editor on deadline.

As to restrictions, there are only two: 50 words or less, and NO SALES OFFERS. This is not a free substitute for paid advertising. Here are two (real) sample listings:

Working on an exhibit of examples of every kind of EFO. The unusual, strange, and wonderful needed. Will trade or buy. Send photocopy and wants to John Hotchner, PO Box 1125, Falls Church, VA 22041-0125, or to jmhstamp@ix.netcom.com

Do you have an idea about how the EFOC can be made more useful to you? Features it might have? Services it might offer? If so, please send it to CWO James E. McDevitt, USCG (Ret.), 955 S. Grove Blvd., #65, Kingsland, GA 31548-5263, or to cwousegr@gate.net

✂

.....

IF YOU would like a free listing in the EFOC to help you with a new project, finding material you need, or elusive information, complete this form (or a copy of it) and send it in to the address below.

I am looking for/need help with

.....

.....

.....

.....

Name and address:

.....

.....

Please send to John Hotchner, PO Box 1125, Falls Church, VA 22041-0125

.....

✂

The EFO Collectors' Club

4217 8th Avenue,
Temple, PA 19560

**PERIODICAL/DATED MATTER
POSTMASTER, DO NOT
DELAY DELIVERY**

Return Service Requested

