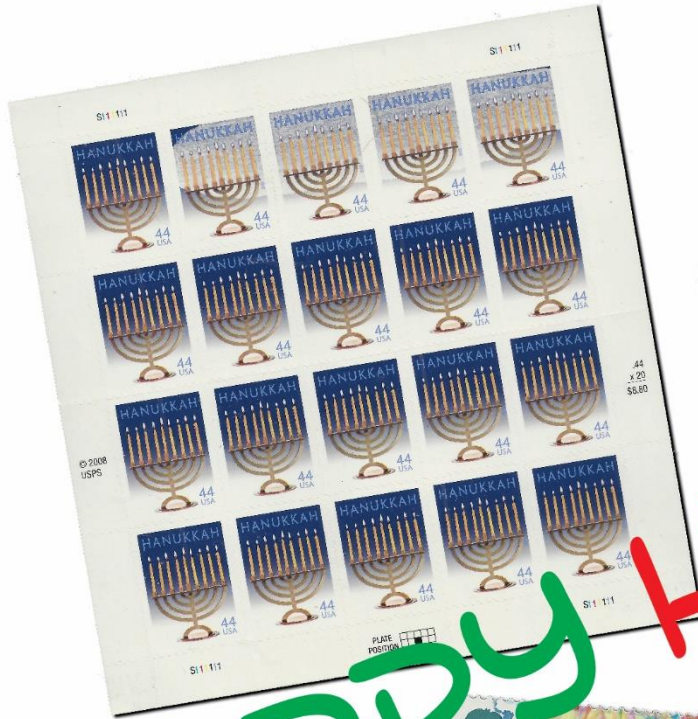


A Publication of the  
EFO Collectors' Club  
APS Affiliate #103  
ATA Chapter #94  
[www.efocc.org](http://www.efocc.org)

# The EFO Collector



October-December 2017 Volume XLVI No. 2 Whole Number 189 ISSN 1099-7377



HAPPY HOLIDAYS!

## Inside This Issue

Holiday Celebrations: Wines & Cordials  
Joseph Monteiro: T'is the Time to be Jolly  
Imperf, Imperf  
Happy Hanukkah  
John Hotchner: 1991-92 Christmas Printer's Waste – Beware  
David Hunt: Auction 150 Highlights  
David Hunt Presents Auction 150

5	From Your Editor	3
6	EFO Post	3
10	Exhibiting EFOCC Members	5
11	Treasurer's Report	16
17	Secretary's Report	16
16	Auction 149 Realizations	27
17		



TO ERR IS HUMAN, TO FIND IS DIVINE





# Upside down or grounded, Siegel sells them best.



*Robert A. Siegel*

AUCTION GALLERIES, INC.

For information about our auctions or to request a copy of the next sale catalogue and newsletter, please contact:

Robert A. Siegel Auction Galleries, Inc., 60 East 56th Street, 4th Floor, New York, N.Y. 10022

Phone (212) 753-6421 Fax (212) 753-6429 E-mail: [stamps@siegelauctions.com](mailto:stamps@siegelauctions.com)

For on-line catalogues, prices realized and the Siegel Encyclopedia

**[www.siegelauctions.com](http://www.siegelauctions.com)**

## From Your Editor



Welcome to our annual Holiday issue! This issue is made possible by those who generously contributed holiday-themed material. If you wish to give a Holiday present to your hard-working Editor, the best way to do so is by sending in an editorial contribution for The EFO Collector. This can be from an EFO that you discovered (ok, that does not happen very often – but it does happen) and how you discovered it, to a story on EFOs of a particular stamp you have been collecting (remember the story we ran on the bobcat stamp a few issues ago) to “A Page from My Album” or “My Favorite EFO” to sending in scans of your EFOs for publication in The EFO Collector. Here are a couple of ideas for articles:

- ❖ How do EFOs augment your otherwise non-EFO stamp collection?
- ❖ How do you collect EFOs? By EFO type, by subject, i.e. to augment a thematic collection, to augment an exhibit structured around a particular stamp or issue? Randomly?
- ❖ How did you get into collecting EFOs? Which kind of EFOs do you collect? How do you decide which EFOs to acquire?
- ❖ What are your sources for acquiring EFOs and which are most productive?
- ❖ If you look at our website, there is a classification of EFOs, courtesy of John Hotchner. What is missing in that list? How should we expand it?

For each of the ideas above, you can augment your article with some relevant EFOs, as examples or to support your point of view.

In addition, you can also provide suggestions for our website, [www.efocc.org](http://www.efocc.org). The website is a particularly important component of EFOCC services, for several reasons: It allows us to present material that does not readily fit into the printed edition of *The EFO Collector*, for example, more detailed pictures for our Auction. It also allows us to provide knowledge that otherwise may be lost in archives, such as old issues of *The EFO Collector*, old articles related to EFOs. Finally, did you know that the website is now the largest source of new members? Therefore, any ideas regarding the website are important.

Having said that, I have to admit that additions and improvements to our website are always work in progress. I periodically try to add new material and make additions and changes. Some you can see (for example, some recent format changes), some you can't (recent overhaul of the programs that make up the website, in order to keep up-to-date with advances in technology).

The EFO Collector | [www.efocc.org](http://www.efocc.org)



15<sup>th</sup> NEW ZEALAND NATIONAL  
PHILATELIC LITERATURE EXHIBITION

30 September – 1 October 2017

Hosted by the Christchurch (NZ) Philatelic Society Inc, P O Box 9246,  
Tower Junction, Christchurch, 8149, New Zealand

## JUDGING SHEET: CLASS 2 Periodicals

**AUTHOR:** Tony Sharman

**TITLE:** Canadian Philatelist

CRITERIA	Max	Awarded
<b>TREATMENT OF CONTENTS - Authorship</b>	<b>40</b>	<b>34</b>
How well is story identified & told?		
- Evaluation of literary style, clarity		
- Skill in communication		

Comments: Good combination of articles. Information and features. Many feature articles are relatively short, but usually there are some larger articles of 5-6 pages on a very wide range of subjects.

<b>ORIGINALITY, SIGNIFICANCE, DEPTH OF RESEARCH</b> - Philatelic Aspects	40	32
- Overall significance = global importance to philately		
- Degree of original discoveries, research, analysis		
- Comprehensive = depth and scope		
- Understanding of subject		

Comments: Some quality research articles, including: India early pictorials by Joseph Monteiro, Canada's experimental tagged stamps by Mirko Zatka, and articles by David Pierzey. A wide range of articles from all areas of the globe.

TECHNICAL MATTERS - Editorial aspect	15	12
How well is work constructed?		
- Title page, imprint, pagination, list of contents, use of footnotes		
- ISBN, acknowledgements, bibliography, index and use of		
- Illustrations and tables - captions, consistency in layout and text		

Comments: ISSN. Detailed list of Committee and membership information. Information about the issue on each page. Articles and features not listed until page 9 though.

<b>PRESENTATION</b> - Publishing aspect	5	5
- Effect of binding, clarity of print, paper quality, page size		
- Use of colour in illustrations		
To avoid impact of purely commercial aspects, this criterion only to be evaluated to the degree that it represents a negative factor.		

Comments: American letter size. Glossy paper. Stapled. Nice size print. Full colour throughout.

	Total points	100	83
--	--------------	-----	----

Medal Award: Large Vermeil

Chairman of the Jury *Jeff Long*

In the recent 15<sup>th</sup> New Zealand National Philatelic Literature Exhibition, hosted by the Christchurch Philatelic Society, *The Canadian Philatelist* won a Large Vermeil. Why is this important? Because the jury's evaluation sheet, shown nearby, in the "Originality, Significance, Depth of Research" area specifically mentioned an article by none other than our regular contributor Joseph Monteiro! The specific article mentioned was "India Early Pictorials". In the October-December 2016 issue of The EFO Collector, we ran a version of that article, titled "Early Pictorials of India and Their Varieties". Congratulations to Joseph! Well done!

I wish you an enjoyable fall season and until next time:  
Happy Hunting!

Cemil



## EFO Post

***I have over 1,000 singles and plate blocks/strips*** with misperfs, color shifts, imperfs, etc., for sale. Tell me what you need. Stan Goldfarb, 8520 Atwell Rd, Potomac, Maryland 20854, **stankatie2006@gmail.com**, (240)447-3853.



## ALL CONTENTS COPYRIGHTED © 2017 BY THE EFO COLLECTORS' CLUB.

Authors and contributors have express permission to reuse of their material elsewhere. Except for material reprinted herein, or material individually copyrighted by the author, material herein may be reprinted elsewhere as long as full credit is given to The EFO Collector, citing the issue date and number and giving the address of the EFOCC Secretary. ♦ The EFO Collector is published quarterly, in March, June, September and December. The submission deadline for any issue is the 15<sup>th</sup> of the month preceding the issue, e.g. 2/15, 6/15, 8/15 and 11/15. Send or e-mail editorial material directly to the Editor. Sample copies of The EFO Collector are available for \$3 from the Secretary. ♦ Membership includes subscription to The EFO Collector. Membership fees are as follows:

	Members with addresses in the U.S. or Canada	Members with addresses elsewhere
One year's dues	\$20.00	\$37.00
One year membership renewal	\$20.00	\$37.00
Two year membership renewal	\$37.00*	\$70.00*
Life membership	\$350.00†	\$500.00

Please make membership renewal checks to "EFOCC" and mail to Treasurer. Charges can be paid via PayPal, subject to a \$2 convenience fee, e-mail Secretary for details. [\*] Each additional year prepaid at the same time is \$17/\$33. [†] \$300 for those older than 65.

### Advertising Rates

	Per Issue	Contract 4 Issues
Full page in color	\$100.00	\$328.00
Half page in color	\$80.00	\$280.00
Quarter page in color	\$65.00	\$244.00
Cover location in color	\$125.00	\$400.00
2 page center spread in color	\$150.00	\$450.00

Single insertion advertisements and from those who are not APS Members must be fully prepaid. Four-issue contract rate advertisers will be invoiced in full upon publication of their first ad. 20% discount for black & white advertising. The deadline for ad copy is the 15<sup>th</sup> of the month preceding the issue. General advertisement inquiries should be directed to the Advertising Director at moek78@msn.com. Advertisement copy related inquiries should be directed to the Editor. Ad payments should be directed to Treasurer. Please make checks payable to "EFOCC".

## EFOCC Officers (2015-2016)

President	<b>Wayne Youngblood</b>	WYStamps@gmail.com	
Vice-President	<b>Cemil Betanov</b> 153 Claudy Lane, New Hyde Park, NY 11040	CemilB@optonline.net	Phone: (516) 849-6604
Auction Director	<b>David Hunt</b> 45 Fairway Drive, Denver, PA 17517	dhhunt@ptdprolog.net	Phone: (717) 445-9420
Treasurer	<b>David Hunt</b> 45 Fairway Drive, Denver, PA 17517	dhhunt@ptdprolog.net	Phone: (717) 445-9420
Secretary	<b>Scott Shaulis</b> P. O. Box 549, Murrys ville, PA 15668-0549	scottshaulis@comcast.net	Phone: (724)733-4134
Editor	<b>Cemil Betanov</b> 153 Claudy Lane, New Hyde Park, NY 11040	CemilB@optonline.net	Phone: (516) 849-6604
Club Member-at-Large	<b>Nancy B. Clark</b> P. O. Box 427, Marstons Mills, MA 02648-0427	nbc@meganet.net	Phone: (508) 428-9132
Club Member-at-Large	<b>Edward A. Kennedy</b> 19 Ranier Road, Effort, PA 18330-8829	moek78@msn.com	Phone: (570) 620-2011
Advertising Director	<b>Edward A. Kennedy</b> 19 Ranier Road, Effort, PA 18330-8829	moek78@msn.com	Phone: (570) 620-2011

### EFOCC Member Post Submission Form

Every EFOCC member is entitled to three free 35 word listings per year in the EFOCC Member Post. To use your free listing, please complete this form, and mail it to the Editor. If you wish, you can also e-mail your request to the Editor.

---

---

---

---

---

---

---

---

### Help With Members' New Projects Submission Form

If you would like a free listing in The EFO Collector to help you with a new EFO project, please complete this form and mail it to the Editor. If you wish, you can also e-mail your request to the Editor.

I am looking for

---

---

---

---

Name, address, e-mail:



## Exhibiting EFOCC Members

### SESCAL 2017, October 13-15, Ontario, CA

**Francis Adams**, *The Mesozoic Times – Where Prehistory meets Philately*, Single Frame – Vermeil.

### Filatelico Fiesta 2017, November 11-12, San Jose, CA

**Alfredo Frohlich**, *Colombia: The Last Classic Issue Postal*, Large Gold, American Philatelic Society Medal of Excellence, Pre-1900.

### FLOREX 2017, December 1-2, Orlando, FL

**Alfredo Frohlich**, *Colombia – First Perforated Issue, 1883*, Large Gold, American Philatelic Society Medal of Excellence, Pre-1900.

**Ronald J. Klimley**, *The 1970 United Nations Fight Cancer Issue*, Gold.

**Ronald J. Klimley**, *The 1966 Polish Millennium First Day Covers*, Gold.

**Dawn R. Hamman**, *Vinegar – History and Uses*, Large Vermeil.

**CONGRATULATIONS TO OUR EXHIBITOR MEMBERS!**

## Holiday Celebrations: Wine and Cordials

An important part of the holiday season are the many celebrations and parties, socializing with friends or family or at an office party. Wine and cordials are an important component of such parties, and of course, they have to be taxed before they are sold for consumption.

To collect these taxes, starting in 1914, Wine Revenue stamps were issued. Initially these were engraved, including the denomination. Starting in 1941, the wine revenue stamps were engraved of printed by offset, but did not include a denomination. Rather there was a space left “empty” for the denomination. The denomination was added with a later printing, similar to an overprint. As you can imagine, whenever there is a second printing process to add an element to an existing stamp, there is a much higher probability that something will go wrong. The second printing can be shifted, partially missing, printed on the wrong side of the stamp. Here are some examples of such mishaps on wine revenue stamps.



Denomination missing



Denomination printed on back of stamp



Denomination shifted upward



**REMEMBER TO BID INAUCION 150**

# T'is the Time to be Jolly

The Christmas season signifies different things to different people. To Christians it is a reminder of the birth of Christ, a renewal of hope for PEACE AND GOODWILL among men. To children, it is a reminder of Santa Claus, a time filled with a contagious hype of receiving toys, sweets, ...anything. To revelers it is a time to get one's mojo going or flowing. To businesses it is a time to fill the stores with the latest merchandise and to hope that sales will boom. To clergymen it is a busy time preparing people for the SAVIOR of the world...when the WORD was made FLESH. To philatelists it is a time to dream about getting Christmas stamps with major errors. In this article, I shall describe a few instances when this dream came true for collectors of Canadian stamps.

## Canadian Christmas Stamps with Major Errors

Canada issued its first Christmas stamp in 1964. Errors on Canadian Christmas stamps started to appear only a few years later. These errors are classified into two groups:

- i. Stamps with missing colours;
- ii. Stamps that are imperforate or partially imperforate.

### Stamps with Missing Colours

#### 1969 – 6 cents Christmas Error

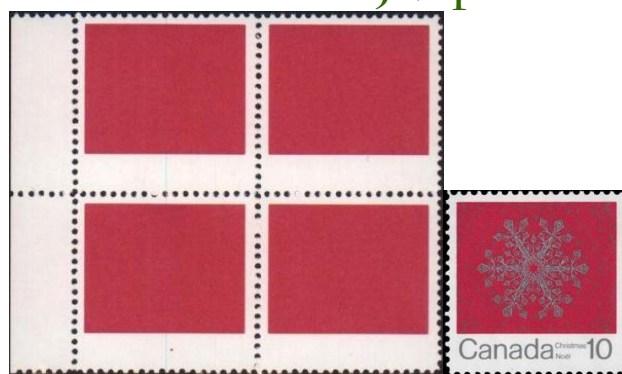
It was not until 1969 that the dream of philatelists came true when a 6c Christmas stamp, issued on October 8, 1969, with a major error was discovered. The bottom quarter or rectangle of the stamp was found with the black border, name of the country, words Christmas Noel and value of the stamp missing (see illustration). This stamp can be described as a missing colour error. The error was discovered on December 17, 1969, by a woman who bought the remainder of a sheet of nine 6 cents stamps at a subpost office in Kerrisdale, British Columbia. Unfortunately, the woman was not a collector so she took the nine stamps back to the postal clerk requesting better stamps. The postal clerk alerted the authorities in Ottawa who stopped the sale of these stamps for several weeks. These stamps were printed in sheets of four panes of 100 stamps. One other pane was sold in Burnaby, BC and the two other panes were also discovered in BC and returned to the postal authorities in Ottawa. From the above account 191 errors of this stamp were sold to the public.



#### 1971 – 10 cents Christmas Error

A second Canadian Christmas stamp issued on October 6, 1971, was discovered with a major error. The error can be described as stamp with the missing white snowflake on the pink background. The stamp was printed by CBN in panes of 50

## Joseph Monteiro



stamps per pane. It is not known where this missing colour error was found. From the above account at least 50 stamps with this error should exist.

#### 1979 – 35 cents Christmas Error

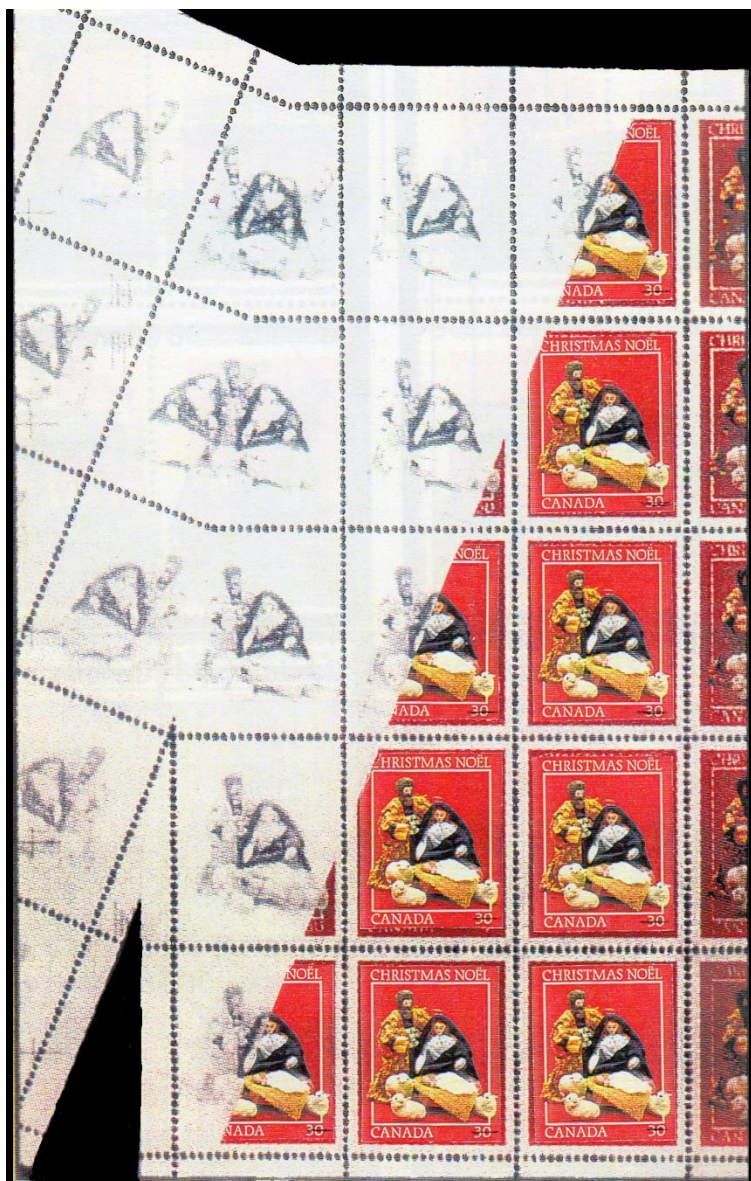
A third Canadian Christmas stamp issued on October 17, 1979, was discovered with a major error. The discovery was made both in Montreal and British Columbia. The stamp was discovered with the name of the country and the value printed in gold missing. The tagging was also missing (see illustration). This stamp can be described as a missing colour error with missing tagging. The error was first made known from the Montreal discovery when a collector purchased a pane of 50 stamps with this error. He used 26 of these stamps on Christmas cards before noticing the error. A second error pane of stamps was discovered by an elderly couple in British Columbia and later sold by John J. Talman. The discovery was noted in an article in the Toronto Sun on May 28, 1981, - "Stamp worth \$100,000 – To err divine for collectors." From the above account 74 errors of this stamp are known to exist in mint condition.



#### 1982 – 30 cents Christmas Error

A fourth Canadian Christmas stamp issued on November 3, 1982, was discovered with a major error. The discovery of this unique error was made in Montreal. It was caused by a paper fold. As a result, one stamp had the colour completely missing, one stamp was printed on the gum side, some other stamps partially have the colour, some are partially printed on the gum side and some are affected by the foldover. It is easier to better grasp this through the illustration as a picture is worth a thousand words (see illustration next page). From the above account only one pane of 50 with this foldover error (i.e. with one stamp missing the colour completely and one stamp printed on the gum side) was discovered.





### Stamps that are Imperforate or Partially Imperforate 1973 – 6 cents Christmas Error

The first Canadian Christmas stamp with a perforation



error came from the Christmas stamp issued on November 7, 1973. The error can be described as a partially imperforate error, in other words, the vertical perforations on the right side of the stamp are missing (see illustration above). It appears the error was caused because a sheet of stamps did not receive the final strike of the perforator. The number of stamps with this partial imperforate error depends on the pane format, the number of panes and their format in the sheet. Only one pane was reported to be found (namely 10 stamps with this partial imperforate error). Given the number of panes printed per sheet, it is believed that at least two panes with this error should exist. From the above account 20 errors of this stamp are likely to exist.

### 1977 – 10 cents Christmas Error

The second Canadian Christmas stamp with an imperforate error came from the 10 cents Christmas stamps issued on October 26, 1977. The error can be described as missing perforations from the third column on the left together with the horizontal perforations from the middle of the second stamp to the middle of the third stamp. One writer described the cause of the errors as follows: “This stamp was perforated left-right by CBN using a 1-row H-comb. The third strike of the comb is missing on at least one pane leaving the right side of the ten stamps in column 2 and the left side of the ten stamps in column 3 imperforate.” It is not known where this error was found and







to date only three of the four panes have been found given the number of panes printed per sheet. From the above account 30 error pairs of this stamp are known to exist though 40 pairs should exist if the fourth pane is found.

#### *1977 – 12 cents Christmas Error*

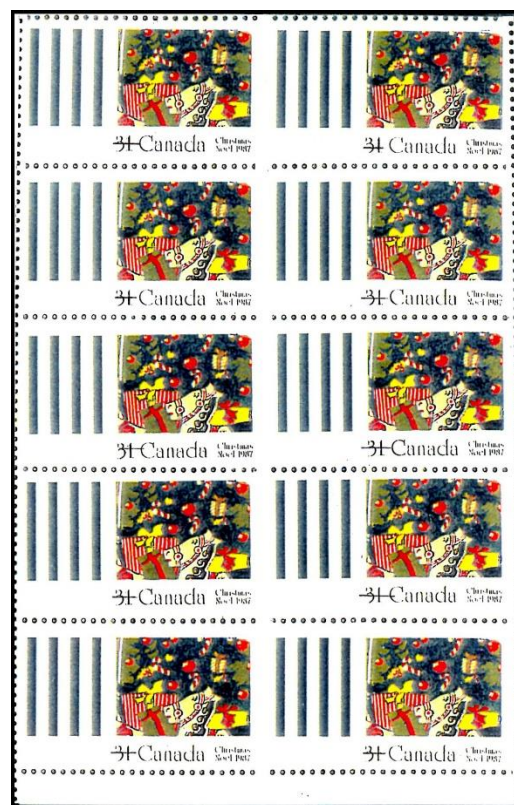
The third Canadian Christmas stamp with an imperforate error came from the 12 cents Christmas stamps issued on October 26, 1977. Two types of errors on this Christmas stamp are known to exist:

- A. Fully imperforate
- B. Partially imperforate.

The first error can be described as missing perforation on all four sides. This error appears only on the first column of the pane on the right. The second error can be described as missing perforations on the left half of the stamp and margin on the first column of the pane. The illustration above best describes both errors. It is not known where these errors were found. Four panes of the first error have been found and two panes of the second error have been found. From the above account 40 errors of the first stamp exist and 20 errors of the second stamp are known to exist.

#### *1987 – 31 cents Christmas Error*

The fourth Canadian Christmas stamp with an imperforate error came from the 31 cents Christmas stamp booklet issued on November 2, 1987. The error can be described as a partially imperforate error. The vertical perforation between pairs of stamps in the booklet are missing causing horizontally imperforate stamps. The vertical outer sides of the pair of stamps have perforations. The normal stamps from the booklet do not have vertical perforations on the outer side. The error was caused because the pane or panes of stamps from which the booklet came was or were guillotined incorrectly. One booklet with the error stamps was discovered in Ontario. Each booklet contained ten stamps resulting in five imperforate pairs per booklet. It is possible that other booklets with this error could exist.



#### *1989 – 33 cents Christmas Error*

The fifth Canadian Christmas stamp with an imperforate error came from the 33 cents Christmas stamp booklet issued on October 26, 1989. The error can be described as a partially imperforate error. The vertical perforation between pairs of stamps in the booklet are missing causing horizontally imperforate stamps. The error was caused because the pane of stamps that were to go in the booklet was incorrectly perforated. This reason is quite different from the reason for the 31 cents imperforate error given earlier. Two booklets with the error stamps were discovered in the Toronto area. Each booklet contained ten stamps resulting in five imperforate pairs per booklet. It is possible that other booklets with this error could





exist. From the above account 10 imperforate pairs with this error are known to exist.

### 1991 – 80 cents Christmas Error

The sixth Canadian Christmas stamp with an imperforate error came from the 80 cents Christmas stamp issued on October 23, 1991. It came from fully imperforate sheets. The stamp was printed by Ashton-Potter in panes of 50 stamps. The exact location where this error was found is not known. In October 2015, Maresch who offered this error for sale indicated “The first of these we have seen.” From the above account 50 imperforate stamps of each or 25 pairs of stamps with this error should at least exist.

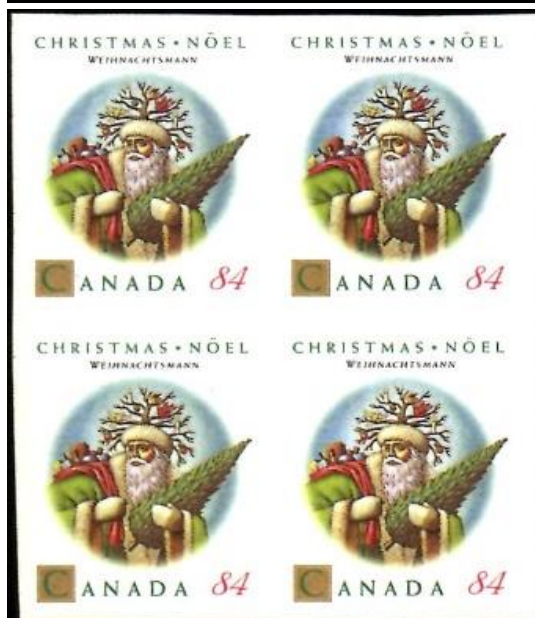
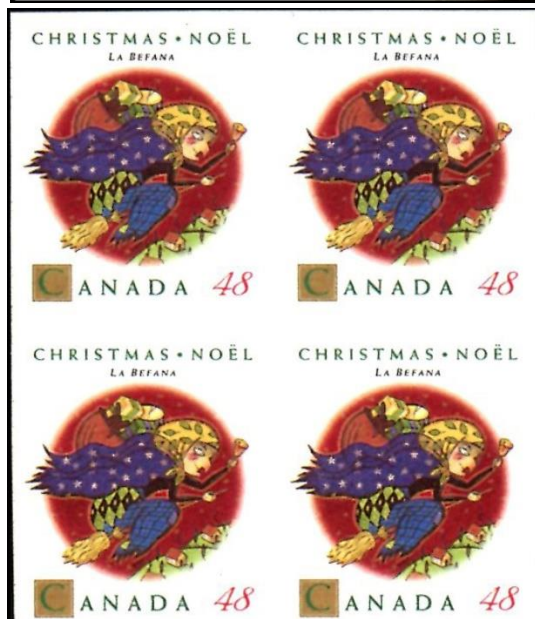
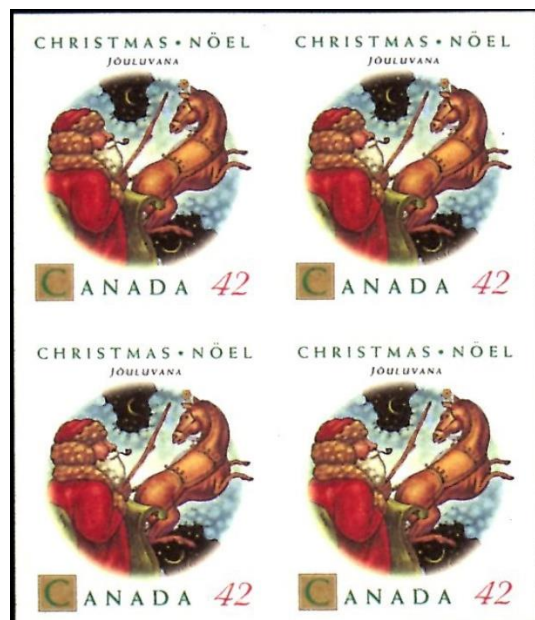


### 1992 – 42 cents, 48cents and 84 cents Christmas Errors

The next Canadian Christmas stamp with imperforate errors came from the 42c, 48c and 84c Christmas stamps issued on November 13, 1992. The errors can be described as fully imperforate errors. Each stamp was printed in panes of 50 stamps. The exact location where these stamps were found is not known. Only one pane of each stamp is reported to have been found though as many as four panes could exist if the stamps were printed in sheets of four panes. From the above account 50 imperforate stamps of each or 25 pairs of these values with this error are known to exist.

### 1993 – 43 cents Christmas Error

The next Canadian Christmas stamp with an imperforate error came from the 43 cents Christmas stamp booklet issued on November 4, 1993. The error can be described as a partially imperforate error. The booklets were improperly guillotined as a result there are no vertical perforations between a pair of horizontal stamps. Instead vertical perforation appears on the outer vertical sides of the stamps, these vertical perforations do not appear on stamps in booklets that were correctly guillotined. Three booklets with the error stamps were discovered in the Toronto area. Each booklet contained ten stamps resulting in







five imperforate pairs per booklet. It is possible that other booklets with this error could exist. From the above account 15 imperforate pairs with this error are known to exist.

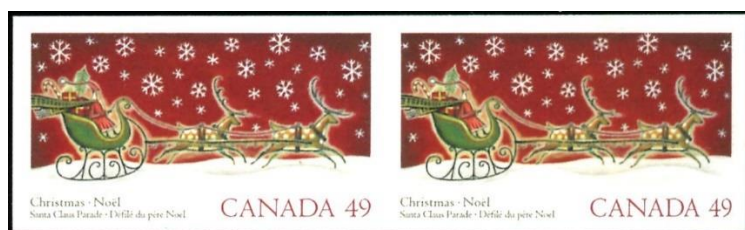
#### 2003 – 48 cents and 65 Christmas Errors

The next Canadian Christmas stamps with an imperforate error came from the 48 cents and 65 cents Christmas stamp booklets issued for 2003. The error can be described as fully imperforate errors. The stamp perforations were created using a die-cut. The cause of the error was the missing die cut impression. The 48 cents booklet contained twelve stamps. Three known imperforate booklets are known to exist. The 65 cents booklet contained six stamps. The 65 cents stamp was the postage rate to the US. The number of imperforate booklets with the 65 cents stamps is not known. From the above account 18 imperforate pairs of 48 cents with this error are known to exist.



#### 2004 – 49 cents and 80 Christmas Errors

The next Canadian Christmas stamp with an imperforate error came from the 49 cents and 80 cents Santa Claus Christmas stamp booklets issued for Christmas 2004. The error can be described as partial and full imperforate errors. The stamp perforations were created using a die-cut. The cause of the error was the missing die cut impression. The number of booklets found with these errors is not known.



## Conclusion

The above description sums up the major errors that have been found on Canadian Christmas stamps. Other errors are known to exist such as repellex errors, unissued stamps with incorrect values, stamps with missing design and miscut stamps. ❖

## Bibliography

- [1] Monteiro, Joseph, Major Canadian Postage Stamp Errors of the Queen Elizabeth Era, Part I.
- [2] R. Maresch, Auction Catalogues 2005-2017.
- [3] Vance Auctions, Sale 325, Part 2, lot 5748, August 23, 2017, p. 84.
- [4] Vance Auctions, Sale 325, Part 2, lot 5762, August 23, 2017, p. 84.
- [5] Vance Auctions, Sale 326, Part 2, lot 5362, October 12, 2017, pp. 93-94.



## Imperf, Imperf...





# Happy Hanukkah



### Solvent smear affects four stamps in top row



# Christmas Fun

Can you identify what's special with the stamps below? Answers are on page 27.



Great Britain 1994 Scott 1581



Great Britain 1969 Scott 606

US 1992 Scott Sc2718aPb







7

US 1985 Scott 2166

8



9



US 1977 Scott 1729

10



11



12



US 1973 Scott 1508

13



# The Philatelic Foundation Has Moved!



On Friday, December 1, 2017, The Philatelic Foundation moved into its new offices located in The Collectors Club in mid-town Manhattan. The PF occupies both the fourth and fifth floors in this storied Stanford White town house. The PF's experts and support staff occupy the fourth floor with easy elevator access to clients and visitors from the club house's ground floor foyer. The office of Larry Lyons, the PF's executive director, is located on the fifth floor, at which its hi-tech expertizing equipment including the VSC6000 and the Bruker XRF Spectrometer are located in a custom designed research area which also houses a portion of its 5,000 volume library. The offices are protected and secured by a state of the art security system.

In its 72-year history serving the philatelic community, the PF has issued over 550,000 Certificates of Authenticity which are available for viewing and study on its website: [www.philatelicfoundation.org](http://www.philatelicfoundation.org). Collectors of EFO's are encouraged to take advantage of this valuable source of research, as well as the opportunity to review many PF publications and so much more on-line.

We are proud of what we have accomplished and look forward to a bright future in our new home in the years ahead. Come visit us!

***Collect with Confidence —with a PF Certificate.***



**The Philatelic Foundation**  
**22 East 35th Street, Fourth Floor**  
**New York, NY 10016**

Phone: 212-221-6555   Web: [www.philatelicfoundation.org](http://www.philatelicfoundation.org)



# 1991-92 Christmas Printer's Waste - Beware

John M. Hotchner, P. O. Box 1125, Falls Church, VA 22041, [jmhstamp@verizon.net](mailto:jmhstamp@verizon.net)

Printer's waste is a category under the Oddity category of EFOs. Stephen Datz defined it best as "Printer's Waste refers to error-like items that have reached the market through the back door rather than across a post office counter. An error sold across the counter is deemed legitimate. Printer's waste is not. The term 'printer's waste' implies that it was misappropriated from a printing plant or wastepaper destruction facility and illicitly sold into the hobby. The term invariably carries a negative connotation. Most collectors do not consider printer's waste to be errors – and rightly so, because they are not."

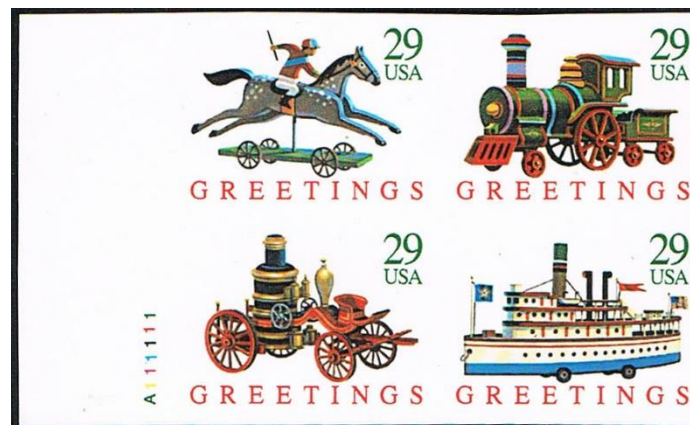
But this is not the end of the story – not by a long shot. There are imperf booklet panes of four stamps (two of which are shown in Figure 1) of the 1991 Christmas set, and similar material plus part perfs for 1992. Here is how Datz and Scott treat them:



Figure 2.

## 1992 Non-Religious

Scott lists the sheet stamps as Scott 2711-2714, and Scott 2715-2718 for the booklet stamps. (Note: Unlike the 1991 booklet panes, which have four of the same stamp, the 1992 booklet pane has one each of the four different designs.) Scott lists no errors, but does include a note after the booklet listing that says, "Imperforates and part-perforates on gummed stamp paper are proofs from the [American Bank Note Co.] archives. From the same source come imperforates with toys only and imperforates without denominations. See No. 2718aP in the Proofs section." An imperf proof pane is shown in Figure 3.



In its Proofs section, Scott lists the following variants:

- Imperf pane
- Horizontal pair of panes of four, imperforate
- Vertical pair of panes of four. Exists both imperf and perforated.
- Pane of four with two stamps at top from bottom row of normal pane, and two stamps from top row on the bottom. Exists both imperf and perforated.
- Imperf pane of four without red "Greetings" or green denominations. Also exists with the rows of stamps switched as noted above.
- Imperf pane of four without green denominations. Also exists with the rows of stamps switched as noted above.



Figure 1.

## 1991 Non-Religious

Scott 2580: this is the sheet version of Santa in the Chimney. Scott 2018 lists two errors: a horizontal pair, imperf vertically, and a vertical pair, imperf horizontally. Datz also lists both in the imperforate errors section.

Scott 2581-5: Scott 2018 lists no errors, nor does it note the existence of printer's waste. Datz Catalogue of Errors (16<sup>th</sup> edition) lists four of the five panes issued known as imperf printer's waste, and does not value them. The one not listed is Scott 2582, but it clearly exists and is shown here in Figure 2.

Datz lists no errors, nor does it list any printer's waste for these issues. But it does have a section titled "Error-like imperforates" which lists the same varieties in Scott's Proofs section.

Are these distinctions important? Absolutely. Recognized errors have specific prices; mostly in the low hundreds. Proofs have cachet, and large prices from the high hundreds to the low thousands. Printer's waste has no cachet, and can be and is sometimes represented as being either recognized errors or proofs. Properly identified they can be a nice addition to a collection. And depending upon how many are out there, the full booklet panes shown here can be in the low hundreds, but be sure you know what you are getting. Use the catalogues. Or ask for an expertizing certificate to confirm the owner's claim as to what they really are. 🌟

*If you have a question, or a possible topic for John to cover in a future issue, please write to him at P.O. Box 1125, Falls Church, VA 22041-0125, or e-mail him at [jmhstamp@verizon.net](mailto:jmhstamp@verizon.net).*

**Editor's Note:** John Hotchner's Not Spending Big Bucks series will continue in the next issue.

~~~~~  
**PLEASE REMEMBER THAT THE EFO COLLECTOR IS YOUR CLUB'S PUBLICATION. SHARE YOUR KNOWLEDGE AND FINDS BY SENDING IN ARTICLES FOR PUBLICATION!**

## Treasurer's Report

David Hunt

[dhhunt@ptd.net](mailto:dhhunt@ptd.net)



### Report for the Quarter August 1 – September 30, 2017

|                    |                |           |
|--------------------|----------------|-----------|
| Beginning balance: |                | \$7587.59 |
| Income             | Dues           | \$77.00   |
|                    | Donation       | \$15.00   |
| Expenses           | Printing costs | (732.70)  |
|                    | Postage costs  | (279.63)  |
| Ending balance:    |                | \$6667.17 |

Respectfully submitted,  
David H. Hunt, Treasurer 🌟

## Secretary's Report

Scott Shaulis

[scottshaulis@comcast.net](mailto:scottshaulis@comcast.net)



### Change of Address

|                     |      |                    |      |
|---------------------|------|--------------------|------|
| Alfredo Frohlich    | 1369 | Michael Kiszka     | 1495 |
| 600 Island Blvd PH8 |      | 5 Cliff Pond Road  |      |
| Adventura, FL 33160 |      | Brewster, MA 02631 |      |

It was a slow quarter this time: only two changes in address. Dues notices will be in your mailbox shortly. Watch your mail! We are aiming for 100% retention this year.

Respectfully submitted,  
Scott 🌟

## Auction 149 Highlights

David Hunt

In acknowledgement of the season the auction begins with 10 different EFOs on Christmas stamps and seals. Lot 7 is a nice color omitted stamp, of which only 250 are believed to exist. The quantity of the stamp in lot 2 could be even less and it is also a very dramatic color shift. The same stamp (Scott 1336) also appears in this sale as a plate block with a 5mm shift down of the horizontal perforations (lot 58), a corner block with a nice guttersnipe (lot 59), and a 'short' stamp due to misperforation (lot 36).

Of the many types of EFO I especially like reverse offsets. There are three such lots in the auction: lots 87, 89 and 123. The red cross on the reverse side of lot 89 is faint, but it is under the gum showing it occurred during printing and not afterwards from stacking of sheets.

Lot 100 is appropriate as this year is the 100<sup>th</sup> anniversary of John F. Kennedy's birth. A long-time EFO dealer told me he is unaware of any other EFO on this stamp so this may be the only EFO available for a collector of this stamp or topic.

When I select the stamps to put in the auction I am somewhat in the dark as to what bidders would like. I see what has sold in prior auctions, but I have not been able to discern any trends to help me in the selection process. If any member wishes to tell me what they would like to see in future auctions, either by specific stamp or type of EFO (e.g. color omission, color shift, perf shift, imperf coils, imperf sheet stamps, miscut booklet panes or complete booklets, smears, over/under inking, etc.), please write or email me. My addresses are on the officers' page near the front of the magazine. I will try to accommodate your interests (subject to what is consigned to the auction) and will also advise consignors so they can take those interests into account. 🌟





## EFOCC Auction Rules for Consignors

### Preparing Lots

Please use a blank form from a recent copy of the EFO Collector. Photocopies are fine. Please use a separate form for each lot.

Secure each lot to the front of the form; attach large lots to the reverse side. Protect all items with mounts, glassine, etc., and stiffeners, if necessary, but **be sure** item/items can be easily removed by Auction Director for examination and/or photographing. Do not use staples. Attach each item so that the description can be easily read. A simple and easy way to mount lots is to do so on dealer sales cards, or in glassines mounted face down for easy removal.

Include a reserve (minimum bid) or write "none". Lots may be revised to accurately describe items; or returned if necessary. Your name and EFOCC number must be on the consignment form, however, to preserve anonymity, these are removed from the consignment sheet before sending item to successful bidders.

Send consignments to David Hunt, 45 Fairway Drive, Denver, PA 17517. Use **insured** or **registered** U. S. Mail.

### Consignor Fees

Consignor commission is 10% of the hammer price, with a minimum cost of 50 cents per lot.

Unsold lots incur a 50 cent fee per lot, and the consignor pays return postage and insurance.

Expenses and printing constraints make it impractical to picture every lot, especially those which are large in size. The EFOCC will exercise discretion in picturing lots.

### Consignor Special Instructions

To save postage and labor, EFOCC can automatically re-submit unsold lots with lower minimums in a future auction, **if you instruct EFOCC clearly what to do**.

If you send duplicate or very similar lots, it is consignor's responsibility to state clearly if you would like to have these placed in different sales. Generally, EFOCC places all items received in the same sale to minimize paperwork.

### Consignment/Payment Timing

EFOCC receives consignments continually and prepares them for subsequent sales, roughly on a first-in/first-out basis. However, large lots may be spread over several auctions.

After the close of each sale, unsold lots are offered to bidders on a first come-first served basis for \$1 over the reserve with no buyer's commission or postage. This increases total sales, makes more bidders happy, and sells more lots for consignors, all for very little additional effort.

EFOCC needs approximately one month after auction's closing date to determine successful bidders, prepare and mail invoices, mail lots, receive payment from winners, list after sale lots and accept their offers, etc., etc. Thus, consignors can expect to receive payment about four to six weeks after an auction closes.

## EFOCC Auction Rules for Bidders

### How to Bid

Please bid on a consignment form from a recent EFO Collector. A photocopy is fine. Include your EFOCC membership number. For new bidders and non-EFOCC members, please include your APS membership number. Sign your bid sheet to acknowledge acceptance of the EFOCC auction rules; unsigned forms cannot be accepted. Submit bids to David Hunt, 45 Fairway Drive, Denver, PA 17517, e-mail to [dhhunt@ptd.net](mailto:dhhunt@ptd.net).

### Bidding Precautions

Minimum bids are not estimates, but are true reserves established by the consignors. Bids below the listed reserve will not be accepted.

Bidders are responsible for inaccurate bids. Bids do not have to be typed, but, please, be sure numbers and amounts are clearly legible. Confirm phone and e-mail bids with a written bid sheet.

### Auction Bid Increments

Please use the following increments when bidding and/or assigning reserves to consignments. Lots are sold to the highest bidder at one advance over the second highest bid.

EFOCC reduces non-conforming bids to the next lower increment. For example, a bid of \$39.50 will be entered as \$39.00.

### Special Bidding Instructions

As the EFOCC auction is a small auction, special instructions cannot be easily accommodated. EFOCC cannot accept "BUY" bids, nor "INCREASE BY...%" bids. **Please, make your final, best, and highest bid and you will get the lot at the lowest price available.**

### Bidders' Payments

A 10% buyer's premium is added to the hammer price of each lot. Buyers pay postage, plus insurance on lots valued at over \$10.00.

Payment is due upon receipt of invoice. If you will be out of town for a while just after an auction closes, or are moving to your summer home about that time, please let EFOCC know at the time you place your bids.

### Returning Lots

Within five (5) days of receipt of awarded lots, you may return any lot which is not described correctly provided such lot is still in its original condition. If an expertizing certificate is a condition of bidding, please inform EFOCC of this before auction closes.

### One Final Request

Please **bid generously on donation lots** whose monies go entirely to the benefit of the EFOCC.

| EFOCC Auction #150 – Lot Descriptions |         |                                                                                                                                                  | Cat Val  | Minimum Bid |
|---------------------------------------|---------|--------------------------------------------------------------------------------------------------------------------------------------------------|----------|-------------|
| Lot #                                 | Catalog |                                                                                                                                                  |          |             |
| 1                                     | 1321    | 5¢ Christmas misperf with part of stamp from next pane NH                                                                                        |          | \$25.00     |
| 2                                     | 1336    | 5¢ Christmas with dramatic color shift NH                                                                                                        |          | \$80.00     |
| 3                                     | 1384    | 6¢ Christmas in Maine one and a half stamps with 50% misperf NH                                                                                  |          | \$50.00     |
| 4                                     | 1294    | \$1 O'Neill with change of legend misperf NH                                                                                                     |          | \$23.00     |
| 5                                     | 1472    | 8¢ Santa color shift causes doubling NH                                                                                                          |          | \$15.00     |
| 6                                     | 1769    | 15¢ Christmas vertical pair with full gutter between. Bottom perfs present but clipped. NH                                                       |          | \$150.00    |
| 7                                     | 1800b   | 15¢ Santa with green, yellow and tan colors omitted. Black is shifted as always. NH                                                              | \$400.00 | \$250.00    |
| 8                                     | 1800    | 15¢ Santa misperf NH                                                                                                                             |          | \$20.00     |
| 9                                     | 2108    | 20¢ Christmas misperf with vert perfs at slight diagonal NH                                                                                      |          | \$23.00     |
| 10                                    | 2165    | 22¢ Christmas color shift creates doubling NH                                                                                                    |          | \$11.00     |
| 11                                    | WX89    | 1937 Christmas Seal with red offset on back, with normal. NH                                                                                     |          | \$10.00     |
| 12                                    | 1866    | 37¢ Millikan change of design misperf NH                                                                                                         |          | \$30.00     |
| 13                                    | 1338    | 6¢ Flag strip of four with vertical misperf. Small pre-printing crease in top stamp NH                                                           |          | \$12.00     |
| 14                                    | 606     | 2¢ Washington coil dispensing machine variety. NH                                                                                                |          | \$5.00      |
| 15                                    | 1581    | 1¢ Quill and Inkwell horiz strip of four with first two vertical lines of perfs shifted left. First stamp w/o value and second is extra wide. NH |          | \$20.00     |
| 16                                    | 720     | 3¢ Washington vertical pair with full gutter between. 20% of bottom stamp missing. LH                                                            |          | \$55.00     |
| 17                                    | 538a    | 1¢ Washington vertical pair, horizontally imperf. Top stamp is LH, bottom NH                                                                     | \$50.00  | \$35.00     |
| 18                                    | 2066    | 20¢ Alaska misperfed vertical pair NH                                                                                                            |          | \$25.00     |
| 19                                    | 1294    | \$1 O'Neill with change of legend misperf NH                                                                                                     |          | \$25.00     |
| 20                                    | 2115f   | DONATION 22¢ Flag imperf coil pair NH                                                                                                            |          | \$4.00      |
| 21                                    | 2280c   | 25¢ Flag imperf coil pair NH                                                                                                                     |          | \$7.00      |
| 22                                    | C75a    | 20¢ Airmail untagged NH                                                                                                                          |          | \$7.50      |
| 23                                    | 741     | 2¢ National Parks misperfed horizontal pair NH                                                                                                   |          | \$30.00     |
| 24                                    |         | no lot                                                                                                                                           |          |             |
| 25                                    | 1297a   | 3¢ Parkman precanceled imperf line pair. Dull gum NH                                                                                             |          | \$35.00     |
| 26                                    | 1854    | 11¢ Alden Partridge change of legend misperf NH                                                                                                  |          | \$18.00     |
| 27                                    | 1471a   | 8¢ Christmas pink (angel's face) omitted plus normal NH                                                                                          | \$100.00 | \$75.00     |
| 28                                    | 2399a   | 25¢ Christmas gold omitted NH                                                                                                                    |          | \$20.00     |



|    |        |                                                                                                                                                                                                                                    |          |          |
|----|--------|------------------------------------------------------------------------------------------------------------------------------------------------------------------------------------------------------------------------------------|----------|----------|
| 29 | 1704   | 13c Washington at Princeton - horizontal perfs shifted up 10mm, text on top instead of bottom. NH                                                                                                                                  |          | \$20.00  |
| 30 | 1455   | 8c Family Planning black intaglio shift puts 8c at left NH                                                                                                                                                                         |          | \$12.00  |
| 31 | 2054   | 20c Metropolitan Opera pair with intaglio color shifted down 5mm NH                                                                                                                                                                |          | \$25.00  |
| 32 | 2052   | 20c Treaty of Paris perfs shifted down putting gutter inside stamp NH                                                                                                                                                              |          | \$20.00  |
| 33 | 1578a  | 10c Banking and Commerce pair with color shift NH                                                                                                                                                                                  |          | \$15.00  |
| 34 | 1843a  | 15c Christmas imperf pair NH                                                                                                                                                                                                       |          | \$35.00  |
| 35 | 1580   | 1975 Christmas color shift NH                                                                                                                                                                                                      |          | \$10.00  |
| 36 | 1336   | 5c Christmas horizontal perfs shifted down. Bend near bottom. Rare. NH                                                                                                                                                             |          | \$10.00  |
| 37 | 1444   | 8c Christmas pair with horizontal perfs shifted up. NH                                                                                                                                                                             |          | \$10.00  |
| 38 | 2514   | 25c Christmas misperf NH                                                                                                                                                                                                           |          | \$11.00  |
| 39 | WX92   | 1938 Christmas Seal imperf pair (proof) NH                                                                                                                                                                                         |          | \$2.00   |
| 40 | 1498   | 8c Postal Workers guttersnipe NH                                                                                                                                                                                                   |          | \$4.00   |
| 41 | 2980   | 32c 19th Amendment black shifted down and right plus normal for comparison. NH                                                                                                                                                     |          | \$10.00  |
| 42 | 1335   | 5c Biglin Bros misperfed vertical pair NH                                                                                                                                                                                          |          | \$4.00   |
| 43 | 73     | 2c Jackson pair with small misperf. Intense black. Hinge remnant, full gum.                                                                                                                                                        | \$800.00 | \$250.00 |
| 44 | C91-2  | 31c Wright Bros missing most of the yellow NH                                                                                                                                                                                      |          | \$50.00  |
| 45 | 1934   | 18c Remington pair with brown color shift down NH                                                                                                                                                                                  |          | \$45.00  |
| 46 | 1729a  | 13c Valley Forge imperf block. Uneven gum with some blank spots, but this looks to be the way it was produced. NH                                                                                                                  |          | \$30.00  |
| 47 | 2479   | DONATION 19c Fawn block with color shift (see red in margin next to fawn's right rear leg) NH                                                                                                                                      |          | \$24.00  |
| 48 | 1078   | 3c Wildlife Conservation misperfed block NH                                                                                                                                                                                        |          | \$30.00  |
| 49 | 2066   | 20c Alaska misperfed block NH                                                                                                                                                                                                      |          | \$45.00  |
| 50 | 1291   | 30c Dewey misperfed block of four NH                                                                                                                                                                                               |          | \$40.00  |
| 51 | C63    | 15c Airmail misperfed block of six NH                                                                                                                                                                                              |          | \$12.00  |
| 52 | 1863   | 22c Audubon misperfed block if four NH                                                                                                                                                                                             |          | \$15.00  |
| 53 | C86    | 11c Electronics plate block with black smears NH                                                                                                                                                                                   |          | \$45.00  |
| 54 | 1894   | 20c Flag misperfed block of four NH                                                                                                                                                                                                |          | \$20.00  |
| 55 | 2057a  | 25c Micronesia/Marshall Is block of four with black lettering "chipped" and disappearing. NH                                                                                                                                       |          | \$40.00  |
| 56 | 2111a  | D stamp imperf block of four NH                                                                                                                                                                                                    |          | \$50.00  |
| 57 | 1047   | 20c Monticello vertical pair with ink smear NH                                                                                                                                                                                     |          | \$18.00  |
| 58 | 1336   | 5c Christmas plate block with horizontal misperf NH                                                                                                                                                                                |          | \$90.00  |
| 59 | 1336   | 5c Christmas block with guttersnipe NH                                                                                                                                                                                             |          | \$10.00  |
| 60 | 1730   | 13c Christmas plate strip with black shifted right NH                                                                                                                                                                              |          | \$85.00  |
| 61 | 2603a  | Eagle bulk rate imperf coil pair NH                                                                                                                                                                                                |          | \$11.00  |
| 62 | 2134a  | 14c Iceboat imperf coil pair NH                                                                                                                                                                                                    |          | \$50.00  |
| 63 | 1473   | 8c Pharmacy plate block with large color shift NH                                                                                                                                                                                  |          | \$500.00 |
| 64 | 1338   | 6c Flag plate block with crazy perfs and extra paper at corner NH                                                                                                                                                                  |          | \$45.00  |
| 65 | J97    | 10c Postage Due with vignette shift NH                                                                                                                                                                                             |          | \$10.00  |
| 66 | J100   | \$1 Postage Due with vignette shift NH                                                                                                                                                                                             |          | \$7.00   |
| 67 | 1735   | A stamp - horizontal perfs shifted NH                                                                                                                                                                                              |          | \$10.00  |
| 68 | 1735   | A stamp - two-way perf shift NH                                                                                                                                                                                                    |          | \$14.00  |
| 69 | 1608a  | 50c Lamp black omitted. Light red stain at lower left, both front and back. NH                                                                                                                                                     |          | \$65.00  |
| 70 | 1610   | \$1 Candleholder misperf NH                                                                                                                                                                                                        |          | \$10.00  |
| 71 | 1611   | \$2 Oil Lamp orange shift down NH                                                                                                                                                                                                  |          | \$20.00  |
| 72 | 1847   | 4c Carl Schurz misperf NH                                                                                                                                                                                                          |          | \$15.00  |
| 73 | 1616a  | 9c Capitol imperf and miscut coil pair NH                                                                                                                                                                                          |          | \$50.00  |
| 74 | 1335   | 5c Biglin Bros with green border. The fact that the green has soaked through the paper to appear on the back and that the Scott error catalog does not list a gold omitted error makes me wonder if this is a color changeling. NH |          | \$20.00  |
| 75 | 2521   | 4c Make-up misperf with perf gutter included NH                                                                                                                                                                                    |          | \$40.00  |
| 76 | 1069   | 3c Soo Locks change of legend misperf NH                                                                                                                                                                                           |          | \$20.00  |
| 77 | 2115   | 22c Flag imperf and miscut pair NH                                                                                                                                                                                                 |          | \$35.00  |
| 78 | 114    | DONATION 1869 3c Locomotive 4mm misperf. Strong color. Used                                                                                                                                                                        | \$17.50  | \$2.00   |
| 79 | 1615Cf | 8.4c Piano imperf pair with Newark, NJ precancel. Note "hollow" 8 in left stamp due to underinking NH                                                                                                                              |          | \$25.00  |
| 80 | 1615Cf | 8.4c Piano imperf and miscut pair showing EE bars. NH                                                                                                                                                                              |          | \$60.00  |
| 81 | 1726   | 13c York Town pair with design change misperf NH                                                                                                                                                                                   |          | \$35.00  |
| 82 | 2529   | 19c Rowboat imperf strip of three. Small color shift (see UR). Thumbprint on gum. Printer's waste. NH                                                                                                                              |          | \$70.00  |
| 83 | 1520   | 10c Jefferson Memorial coil strip of three with joint line - misperfed and miscut. NH                                                                                                                                              |          | \$40.00  |
| 84 | 1447   | 8c Peace Corps multiple color shift NH                                                                                                                                                                                             |          | \$12.00  |
| 85 | 1908   | 20c Fire Pumper coil strip of 5 with plate number 13 misperfed 8mm to left NH                                                                                                                                                      |          | \$25.00  |
| 86 | 1055   | 2c Jefferson misperfed coil line strip of three NH                                                                                                                                                                                 |          | \$22.00  |
| 87 | 1435b  | 8c Space Achievement pair with offset on back. NH                                                                                                                                                                                  |          | \$65.00  |
| 88 | 1280   | 2c Frank Lloyd Wright vertical pair with guttersnipe showing part of stamp from next pane. NH                                                                                                                                      |          | \$9.00   |
| 89 | 702    | 2c Red Cross with red offset of the cross under the gum. NH                                                                                                                                                                        |          | \$30.00  |
| 90 | 2897a  | 32c Flag imperf vertical pair with margin. NH, but some fingerprints on gum.                                                                                                                                                       |          | \$28.00  |
| 91 | 1117   | 4c Kossuth misperfed pair with guttersnipe. NH                                                                                                                                                                                     |          | \$13.00  |
| 92 | TD85   | Rotary press test stamp NH                                                                                                                                                                                                         | \$50.00  | \$25.00  |
| 93 | 1735   | A Stamp plate block of six with crazy perfs. NH                                                                                                                                                                                    |          | \$35.00  |
| 94 | 1284   | 6c FDR block of four badly smeared NH                                                                                                                                                                                              |          | \$20.00  |
| 95 | 1903a  | 9.3c Mail Wagon miscut coil pair with misregistered precancel NH                                                                                                                                                                   |          | \$15.00  |
| 96 | 2087   | DONATION 20c Health Research plate block with crazy perfs - about as small as you can find them! NH                                                                                                                                |          | \$1.50   |
| 97 | 1894   | 13c Indian Head Penny misperfed plate block. NH, but small mark on gum.                                                                                                                                                            |          | \$40.00  |



|     |        |                                                                                                                                                                                              |          |          |
|-----|--------|----------------------------------------------------------------------------------------------------------------------------------------------------------------------------------------------|----------|----------|
| 98  | C87    | 18c Statue of Liberty with tagging ghost on black NH                                                                                                                                         |          | \$10.00  |
| 99  | 1752a  | 13c Dance block of four with vertical perfs on slight diagonal and shifted 7-10mm to left. NH                                                                                                |          | \$15.00  |
| 100 | 1246   | 5c JFK plate block with crazy perfs. There are few if any other EFOs on this issue. A foldover like this is a one of a kind item, so this could be the only EFO available for this issue. NH |          | \$125.00 |
| 101 | 1752a  | 13c Dance block of four with vertical perfs shifted 7mm to right to include the gutter as part of the block. NH                                                                              |          | \$40.00  |
| 102 | 1238   | 5c City Mail Delivery blue doubling caused by tagging offset. NH                                                                                                                             |          | \$4.00   |
| 103 | 1951c  | 20c Love stamp with blue omitted. Off center as are about 70% of known supply. NH                                                                                                            | \$200.00 | \$100.00 |
| 104 | 1561a  | 10c Salomon with back inscription omitted NH                                                                                                                                                 | \$150.00 | \$65.00  |
| 105 | 1632   | 13c Interphil engraved color shifted down and right. NH                                                                                                                                      |          | \$30.00  |
| 106 | 1338Fj | 8c Flag pair imperf between NH                                                                                                                                                               | \$45.00  | \$25.00  |
| 107 | 2013   | 20c Science and Industry black intaglio shifted left NH                                                                                                                                      |          | \$25.00  |
| 108 | 1338A  | 6c Flag misperfed line strip of five NH                                                                                                                                                      |          | \$35.00  |
| 109 | 937    | 3c Alfred E. Smith misperfed pair NH                                                                                                                                                         |          | \$12.00  |
| 110 | C36    | 25c Airmail overinked NH                                                                                                                                                                     |          | \$10.00  |
| 111 | 1359   | 6c Leif Erikson pair with center design shifted up. NH, but some disturbed gum.                                                                                                              |          | \$20.00  |
| 112 | 1596   | 13c Eagle and Shield color shift down NH                                                                                                                                                     |          | \$10.00  |
| 113 | 1891a  | 18c Flag imperf coil strip of four with horizontal die break on two middle stamps beneath red stripes. NH                                                                                    |          | \$50.00  |
| 114 | 1756   | 15c George M. Cohan misperfed pair includes EE bars at bottom NH                                                                                                                             |          | \$9.00   |
| 115 | 1625   | 13c Independence Hall misperfed coil pair NH                                                                                                                                                 |          | \$15.00  |
| 116 | 2144   | 22c REA misper NH                                                                                                                                                                            |          | \$18.00  |
| 117 | S7     | 25c Savings Stamp change of legend misperfed pair. NH                                                                                                                                        |          | \$40.00  |
| 118 | 1478   | 8c Bicentennial dramatic color shift NH                                                                                                                                                      |          | \$35.00  |
| 119 | 1690   | 13c Franklin color shift NH                                                                                                                                                                  |          | \$10.00  |
| 120 | 1868   | 40c Lillian M. Gilbreth missing almost all the color - plus normal for comparison. NH                                                                                                        |          | \$25.00  |
| 121 | 1278   | 1c Jefferson misper NH                                                                                                                                                                       |          | \$4.00   |
| 122 | 1784Pg | 13c John Paul Jones imperf pair with gutter between. Proof. NH                                                                                                                               | \$600.00 | \$350.00 |
| 123 | 2014   | 20c International Peace Garden black offset on back NH                                                                                                                                       |          | \$30.00  |
| 124 | 1278   | 1c Jefferson misper NH                                                                                                                                                                       |          | \$15.00  |
| 125 | 1384c  | 6c Christmas in Maine plate strip of ten with light green omitted NH                                                                                                                         |          | \$150.00 |
| 126 | 1843b  | 15c Christmas imperf plate strip of 20 with circular 10mm patch of gum missing behind yellow color bars at bottom of margin. No stamps affected. NH                                          | \$500.00 | \$300.00 |
| 127 | 1894   | 20c Flag plate strip of 20 with horizontal misper putting flag at bottom of stamps. NH                                                                                                       |          | \$300.00 |
| 128 | 1703   | 13c Christmas plate strip of 20 with the 10 right stamps missing ink from parts of "Christmas 13c". NH                                                                                       |          | \$100.00 |
| 129 | 634    | 2c Washington block of nine with center stamp having the recut plate flaw most evident in hair. NH                                                                                           |          | \$60.00  |
| 130 | 1281   | 3c Parkman misperforated Zip block of six plus gutter and part of next pane. NH                                                                                                              |          | \$225.00 |
| 131 | C11    | %c Beacon plate block of six with blue vignette shifted left. Plane is shifted into red frame. Hinged in top margin.                                                                         |          | \$300.00 |
| 132 | C114   | 39c Lawrence and Elmer Sperry strip of three with color bars showing multiple color shifts. NH                                                                                               |          | \$18.00  |
| 133 | 2275   | 22c United Way block of ten, D press blue ink smear affects 8 stamps. NH                                                                                                                     |          | \$15.00  |
| 134 | 2090   | 20c John McCormack misper NH                                                                                                                                                                 |          | \$40.00  |
| 135 | 3523   | 34c Lucille Ball plate block with die cuts shifted 11mm left. NH                                                                                                                             |          | \$250.00 |
| 136 | 4122   | 39c Kisses major soft wiping streak of black ink through first column of complete booklet. NH                                                                                                |          | \$20.00  |
| 137 | 1756   | 15c George M. Cohan plate strip of 12 with crazy perfs NH                                                                                                                                    |          | \$125.00 |
| 138 | 3112a  | 32c Christmas die cuts shifted up 5mm. NH                                                                                                                                                    |          | \$40.00  |
| 139 | U536   | 4c Franklin - envelope folded inside out, inked impression is on inside at upper left of envelope. Unused                                                                                    |          | \$5.00   |
| 140 | U577   | 2c Non-profit envelope, FDC with Circular Date Stamp inverted. Used.                                                                                                                         |          | \$1.00   |
| 141 | UY33   | Robert Morris unsevered postal reply card with FDC and portion of second FDC strike at left. Used.                                                                                           |          | \$1.00   |
| 142 | 1031,5 | Three misperfs on cover. Used                                                                                                                                                                |          | \$35.00  |
| 143 | 2283a  | 25c Pheasant booklet with two panes miscut into a shallow "V" shape                                                                                                                          |          | \$25.00  |



Scott 1384  
Missing digit in plate  
number  
(not an auction lot)



AUCTION 150 CLOSES ON JANUARY 31<sup>ST</sup>, 2018

VIEW LARGE PICTURES OF LOTS AT [HTTP://WWW.EFOCC.ORG](http://www.efocc.org)





AUCTION 150 CLOSES ON JANUARY 31<sup>ST</sup>, 2018

VIEW LARGE PICTURES OF LOTS AT [HTTP://WWW.EFOCC.ORG](http://www.efocc.org)





VIEW LARGE PICTURES OF LOTS AT [HTTP://WWW.EFOCC.ORG](http://www.efocc.org)





I have not yet begun to fight

**John Paul Jones**  
US Bicentennial 15c

I have not yet begun to fight

**John Paul Jones**  
US Bicentennial 15c

122

50c  
JOHN PAUL JONES  
US BICENTENNIAL 15c

123

UNITED STATES  
THOMAS JEFFERSON

124

48

UNITED STATES  
USA 15c  
Season's Greetings

UNITED STATES  
USA 15c  
Season's Greetings

USA 15c  
Season's Greetings

USA 15c  
Season's Greetings

USA 15c  
Season's Greetings

USA 15c  
Season's Greetings

6 39325





AUCTION 150 CLOSES ON JANUARY 31<sup>ST</sup>, 2018

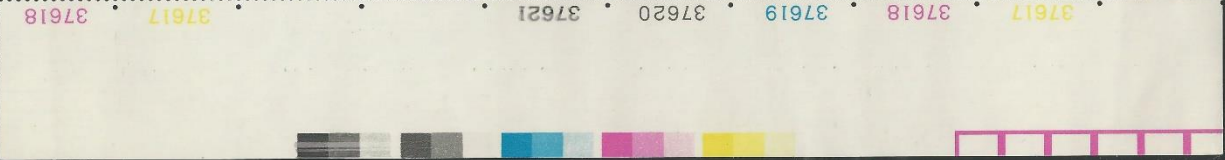
VIEW LARGE PICTURES OF LOTS AT [HTTP://WWW.EFOCC.ORG](http://www.efocc.org)



127



128



129



130



131



132

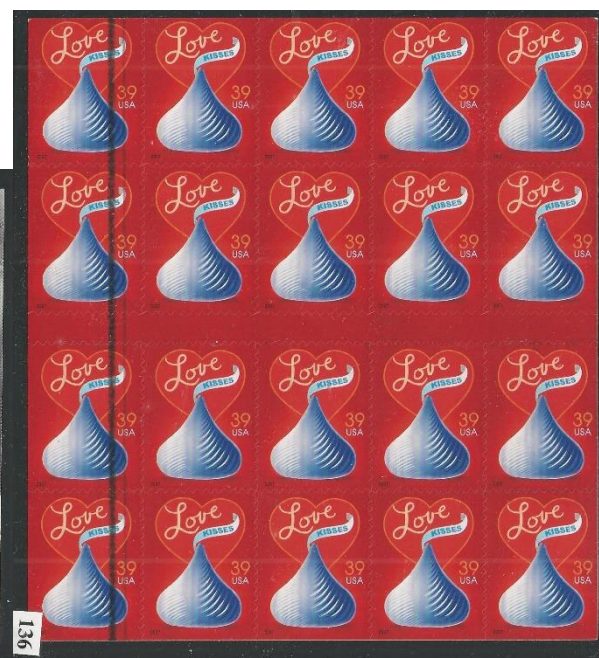


133



134





AUCTION 150 CLOSING ON JANUARY 31<sup>ST</sup>, 2018  
 VIEW LARGE PICTURES OF LOTS AT [HTTP://WWW.EFOCC.ORG](http://www.efocc.org)

UNSOLD AUCTION LOTS CAN BE PURCHASED FOR \$1 OVER RESERVE PRICE PLUS SHIPPING AND HANDLING, WITH NO BUYER'S COMMISSION. SEE NOTE ON PAGE 27.

# EFOCC Auction Consignment Form

EFOCC use – only ⇨ AUCTION #:

LOT #:

|                                                                                                                                                        |                                                                                            |                                                                                                                                                          |
|--------------------------------------------------------------------------------------------------------------------------------------------------------|--------------------------------------------------------------------------------------------|----------------------------------------------------------------------------------------------------------------------------------------------------------|
| Consignor: _____<br>Address: _____<br>_____<br>Telephone: (____) - _____<br>Email/Fax: _____<br>EFOCC Membership No: _____<br>APS Membership No: _____ | Country (if not U.S.) _____<br>Catalog No. _____<br>_____<br>Catalog Value: _____<br>_____ | Condition (circle): NH LH HH HR NG USED<br><br>Please check if this is a donation lot: <input type="checkbox"/><br><br>Please note Minimum Bid: \$ _____ |
|--------------------------------------------------------------------------------------------------------------------------------------------------------|--------------------------------------------------------------------------------------------|----------------------------------------------------------------------------------------------------------------------------------------------------------|

Description of item: {Please note any faults and fasten lots below this line or on the reverse side}

*Instructions: Fill in all information. Attach each lot to the front of one form, using a stock card, face-down glassine or other mount. Use separate rigid sheet for larger lots and attach a completed form. No staples - please. Make sure it is easy for us to remove and re-insert each lot.*



Send consignment form(s) with lot(s) to: David Hunt, 45 Fairway Drive, Denver, PA 17517  
 For your protection, we recommend that you send lot(s) by registered or insured mail.



## EFOCC Auction Bid Sheet

Name: \_\_\_\_\_ EFOCC #: \_\_\_\_\_ *New Bidders.....APS Membership appreciated: \_\_\_\_\_*  
 Address: \_\_\_\_\_ Phone: (\_\_\_\_) \_\_\_\_\_ *Please limit my purchases to:*  
 City: \_\_\_\_\_ State: \_\_\_\_\_ Zip: \_\_\_\_\_ \$ \_\_\_\_\_

Please execute the following bids for me in EFOCC Auction # \_\_\_\_\_

\_\_\_\_\_  
 {Signature - all bid sheets must be signed}

\_\_\_\_\_  
 {Date}

Earliest postmark wins tie bids!!

| Lot# | Bid | Lot# | Bid | Lot# | Bid | Lot# | Bid | Lot# | Bid | Lot# | Bid |
|------|-----|------|-----|------|-----|------|-----|------|-----|------|-----|
|      |     |      |     |      |     |      |     |      |     |      |     |
|      |     |      |     |      |     |      |     |      |     |      |     |
|      |     |      |     |      |     |      |     |      |     |      |     |
|      |     |      |     |      |     |      |     |      |     |      |     |
|      |     |      |     |      |     |      |     |      |     |      |     |
|      |     |      |     |      |     |      |     |      |     |      |     |
|      |     |      |     |      |     |      |     |      |     |      |     |

*Postage will be charged to the bidder. A 10% buyer's premium will be added to successful bids.*  
 Mail bid sheets to: David Hunt, 45 Fairway Drive, Denver, PA 17517 or email to: dhhunt@ptdprolog.net





VIEW LARGE PICTURES OF LOTS AT [HTTP://WWW.EFOCC.ORG](http://www.efocc.org)

AUCTION 150 CLOSES ON JANUARY 31<sup>ST</sup>, 2018

## EFOCC Auction 149 Realizations (Closed November 30<sup>th</sup>, 2017)

| Lot | Hammer | Lot | Hammer | Lot | Hammer | Lot | Hammer | Lot | Hammer | Lot | Hammer | Lot | Hammer | Lot | Hammer |
|-----|--------|-----|--------|-----|--------|-----|--------|-----|--------|-----|--------|-----|--------|-----|--------|
| 1   | \$41   | 5   | \$30   | 13  | \$10   | 14  | \$7.50 | 15  | \$25   | 22  | \$75   | 25  | \$3.50 | 26  | \$35   |
| 28  | \$21   | 29  | \$14   | 30  | \$40   | 37  | \$5.50 | 44  | \$10   | 52  | \$25   | 60  | \$38   | 66  | \$4.50 |
| 71  | \$45   | 75  | \$20   | 94  | \$20   | 95  | \$40   | 98  | \$18   | 102 | \$20   | 109 | \$13   | 116 | \$9    |
| 123 | \$18   | 126 | \$21   | 127 | \$40   | 128 | \$45   | 129 | \$25   | 130 | \$18   | 133 | \$18   | 141 | \$30   |
| 142 | \$36   | 143 | \$31   | 144 | \$23   |     |        |     |        |     |        |     |        |     |        |

**Members, please note:** Unsold lots from Auctions 149 are available for sale on a first come-first served basis for \$1 over the reserve price plus shipping, with no buyer's commission. Please contact the Auction Director to purchase these lots.

## Christmas Fun (Page 11-12) - Answers

|   |                          |                                                       |    |               |                                                                          |
|---|--------------------------|-------------------------------------------------------|----|---------------|--------------------------------------------------------------------------|
| 1 | Great Britain Scott 1581 | Normal                                                | 8  | US Scott 1729 | Normal                                                                   |
| 2 |                          | Multiple color shifts                                 | 9  |               | Black legends underinked                                                 |
| 3 |                          | Imperf pair                                           | 10 | US Scott 1508 | Normal                                                                   |
| 4 | Great Britain Scott 606  | Normal                                                | 11 |               | Yellow shift                                                             |
| 5 |                          | Light blue omitted                                    | 12 |               | Gray-brown (background) shift                                            |
| 6 | US Scott Sc2718aPb       | Christmas Toys proofs from the American Bank Note Co. | 13 |               | Plate block of ten with perf shift capturing plate numbers within stamps |
| 7 | US Scott 2166            | Imperf                                                |    |               |                                                                          |

A MEMBERSHIP TO THE EFOCC IS A TERRIFIC PRESENT FOR A PHILATELIC FRIEND

# For over 60 years...



## American philately's #1 dealer in major errors.



Now also your source  
for investment grade  
U.S. classics.

**Jack Nalbandian, Inc.**

Post Office Box 71  
East Greenwich RI 02818  
Toll Free: (877) 742-6168  
Phone: (401) 885-5020  
nalbandianj@earthlink.net

[www.nalbandstamp.com](http://www.nalbandstamp.com)