

# EFO COLLECTOR

Published by the EFO Collectors' Club  
Copyright 1987 EFO Collectors' Club, A Nonprofit Organization  
APS Affiliate No. 103, Member COPO



President: John M. Hotchner  
Editor: Lou Novacheck

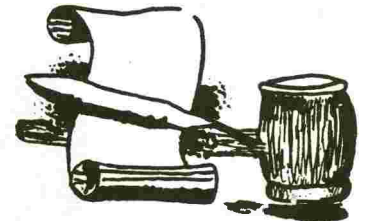


Volume IX, No. 6 (#52)

June, 1987

Founded 1978

## PRESIDENT'S PREROGATIVE - WESTPEX IN '89



Having just come back from WESTPEX in San Francisco, I'm now getting excited and nervous about our commitment to be THE participating Society at WESTPEX '89 (April 28-30, 1989). This will mark our debut on the national scene as an important force in the hobby - IF WE DO IT RIGHT.

To accomplish this we need to begin now to plan to fulfill the obligations of participation. I am constituting a committee to plan for WESTPEX '89. It will be chaired by Vice President Lou Repeta. Former Presidents Dan Pagter, Phil Nazak and I will serve on it. I would also welcome a couple of volunteers - preferably Californians - to serve on the EFOCC Planning Committee for WESTPEX '89.

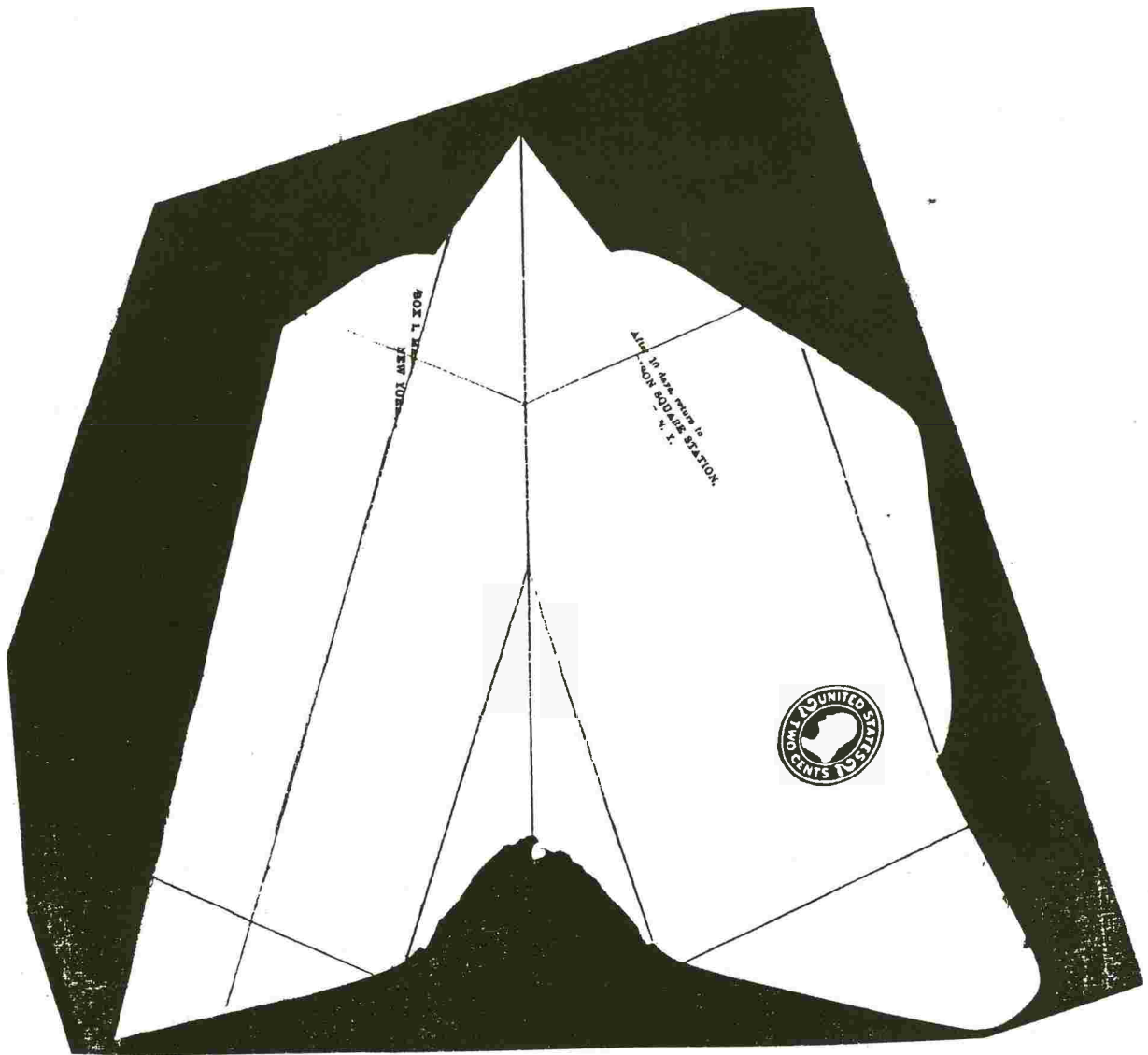
Among the matters that must be seen to are:

## TABLE of CONTENTS

PRESIDENT'S PREROGATIVE	1	Q & A DORMANT	14
A PRINTER'S NIGHTMARE COME TRUE	2	WPPEX '87 WELCOMES EFOCCERS	15
EFOCC SECRETARY'S REPORT	5	EFO POST	15
MEMBERSHIP MEETING IN BOSTON	5	BROADENING OUR APPEAL	16
SOMETHING TO WATCH OUT FOR	6	STAMPS FOR THE WOUNDED	17
EDITOR'S NOTES	8	EFOCC 1986-88 OFFICERS AND BOARD	17
NOTICE ON SCOTT #1529	9	DUES FORM	18
DELAYS, DELAYS	9	EFOCC AUCTION #31	19
STAMP SEPARATION: ITS DEVELOPMENT FROM	10	EFOCC AUCTION #29 REPORT	26
1840 TO MODERN TIMES		EFOCCA BID SHEET	27
EFOCC SPOTLIGHT	14	EFOCCA CONSIGNMENT SHEET	27

A PRINTER'S NIGHTMARE COME TRUE

by  
F. C. Pogue



The Unfolded Envelope

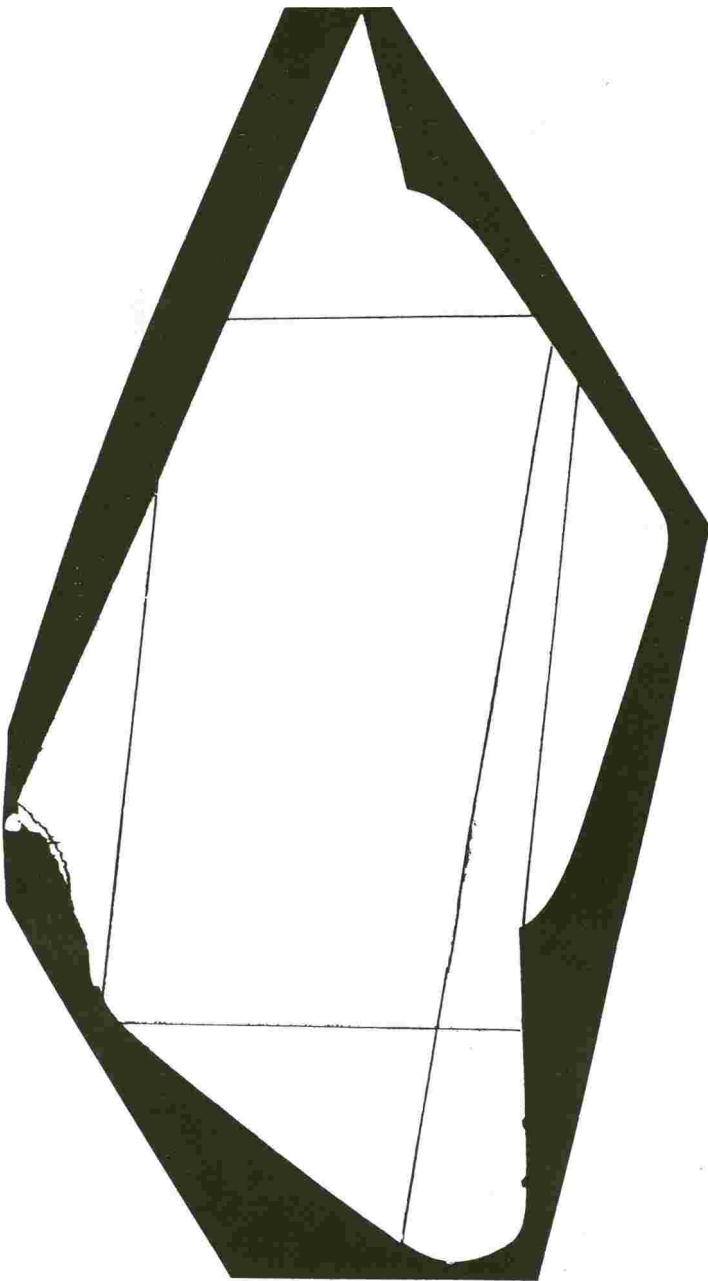
Does anybody out there have an EFO that is the victim of as many production problems as the above illustration?

First off, the sheet from which the blank was cut was both torn and folded, so that the blank was cut as seen in the Step 1 Illustration.

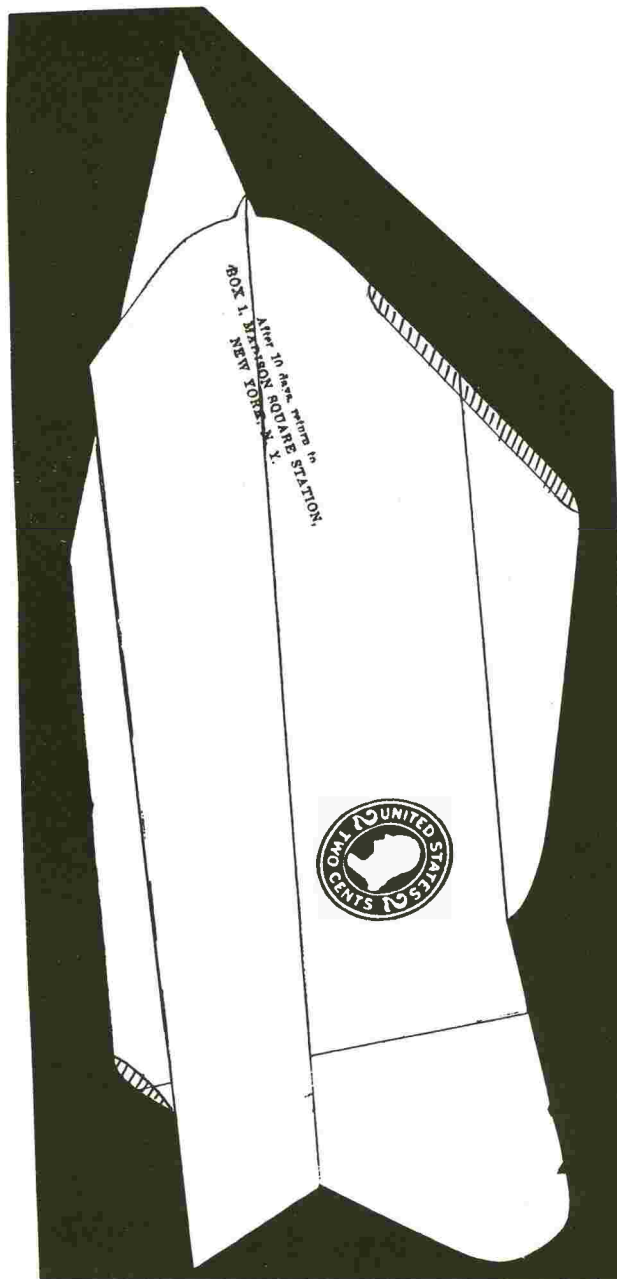
Then, it was printed over a refold as seen in the Step 2-3 Illustration. In that illustration, the gumming is shown by the cross-hatching.

The second fold was unfolded prior to Step 4, which shows the face and back of the results of a berserk folding machine.

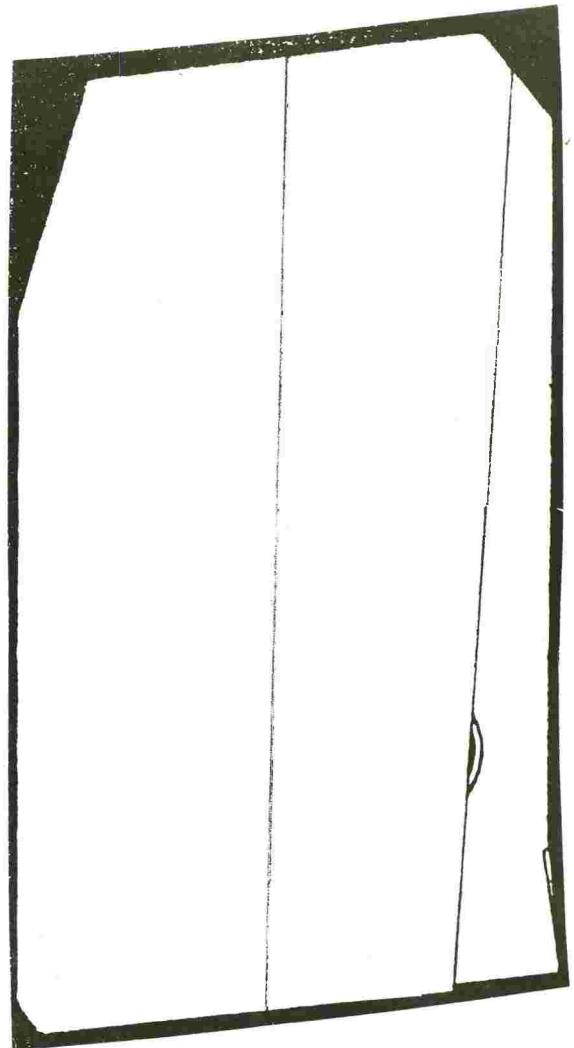
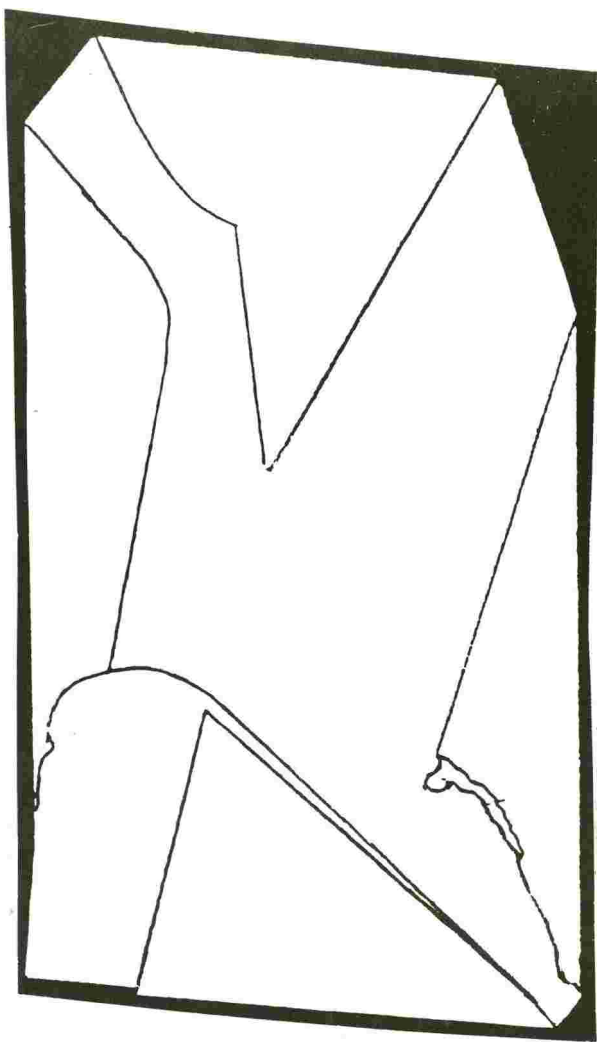
As is illustrated, at least seven things went wrong in producing this envelope. Can you top this?



Step 1. The blank as cut by knife. It's torn, folded and miscut.

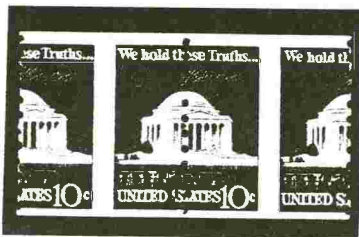


Steps 2-3. Printed over a refold resulting in a tremendous pre-printing crease. It was also misgummed as shown by cross-hatching.



Step 4. Shows the obverse and reverse of the envelope after folding by a mad folding machine. The re-fold was smoothed out before final folding.

APS



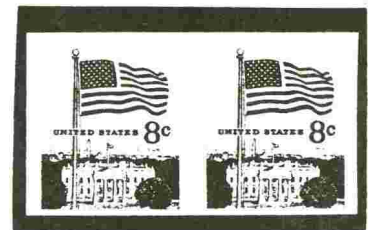
\$15.00  
Scarce

BIA



\$12.50

EFOCC



\$47.50  
Imperf pair

STAN GOLDFARB  
301-279-0754  
8520 Atwell Rd.  
Potomac, MD.  
20854

Illustrated U.S. Error price list 25¢ plus SASE



EFOCC SECRETARY'S REPORT

WELCOME TO LIFE MEMBER:

LM - 10 CWO JIM MCDEVITT, 1903 VILLAGE RD - W, NORWOOD, MA 02062-2524

WELCOME TO MEMBERS:

- #595 LARRY E. BOING, 2351 GRANDVIEW, IL 60435 - BKLTs, TRANSP. COILS,  
GREAT AMERICANS  
#596 ANDREW J. BAER, 36 W. OAKLEY CT., #201, WESTMONT, IL 60559  
#597 STANLEY L. FRANKEL, 1565 E. 5th ST., BROOKLYN, NY 11230 - DEALER,  
U.S. (ALL), UNITED NATIONS

IN MEMORIAM:

#100 THE HON. EDWARD A. BEARD, WASHINGTON, D.C.

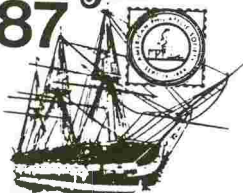
CLUB MEMBERSHIP AS OF 9 MAY, 1987 = 341

KUDOS:

INTERPEX, NY = SILVER TO JIM BENEDICT, #193 FOR HIS PREPRINTING PAPERFOLDS  
ON REVENUE ISSUES. ALSO TO JIM, A VERMEIL FOR HIS ENTRY AT SANDICAL-87.

REMINDER, CLUB DUES TIME IS HERE - AGAIN! ENCLOSED WITH THIS ISSUE IS A  
MEMBERSHIP/SUBSCRIPTION FORM. PLEASE FILL OUT AND MAIL AS SOON AS POSSIBLE.

StampSHOW  
87



101st Annual Convention  
Boston, Massachusetts-August 20-23

NOTICE!!

NOTICE!!

NOTICE!!

THE ERRORS, FREAKS, ODDITIES COLLECTORS CLUB WILL HOLD  
A MEETING DURING THE 101st ANNUAL CONVENTION OF THE  
AMERICAN PHILATELIC SOCIETY, AUGUST 20-23 IN BOSTON,  
MASSACHUSETTS.

THIS MEETING WILL BE HELD FROM 4 TO 5:50 P. M., SATURDAY, 22 AUGUST, 1987  
IN THE BEACON "D" ROOM OF THE SHERATON BOSTON HOTEL. IF YOU CAN ATTEND  
AND GIVE A FIVE, TEN OR FIFTEEN MINUTE PRESENTATION ON SOME ASPECT OF  
EFO'S OR EFO COLLECTING, PLEASE CONTACT THE CLUB'S SECRETARY - JIM  
MCDEVITT, 1903 VILLAGE ROAD - WEST, NORWOOD, MA 02062-2524, TEL: (617)  
769-6531. A SLIDE PROJECTOR WILL BE AVAILABLE, IF NEEDED.

FOR A STAMPSHOW 87 PROSPECTUS, INFORMATION, ETC. - WRITE THE APS AT  
AMERICAN PHILATELIC SOCIETY, STAMPSHOW 87, P.O. BOX 2000, STATE COLLEGE,  
PA 16803.

## SOMETHING TO WATCH OUT FOR

by  
James W. Harkleroad

FDC Coil Errors, Scott 1891 - 18¢ Flag - Plate 5 sent to press on May 15, 1981 - FDC is April 24, 1981.

Scott 1903 - 9.3¢ Mail Wagon - Plate 4 sent to press on January 20, 1982 - FDC is December 15, 1981.

Scott 1907 - 18¢ Surrey - Plates 7 and 8 sent to press on June 13, 1981 - FDC is May 15, 1981.

Scott 1907 - 18¢ Surrey - Plates 9 and 10 sent to press on June 18, 1981 - FDC is May 15, 1981 - S.G. Esrat, Linn's, Nov 17, 1986.

THAMESPEX pictorial cancel appears with and without killer bars. Used in October, 1986. Covers without killer bars are NOT cancellation errors - G. G. Ryan, Linn's, Jan 19, 1987.

"Florida State Fair/February 4-15/Tampa, Florida," slogan cancel used out of Miami, Florida, dated January 26, 1987. Other dates, years, cities? Misspelled "February." G. Schaefer, friend.

Fiji "missing man in the canoe" is not an error. Copies from colony Coat of Arms. Public objections put man in canoe. P. Halward, Stamp Collector, Dec 27, 1986.

Scott R024d is considered by many to be only match stamp printing error. Does anybody know of any others? C. West's United States Match and Medicine Stamps, and Private Die Match Stamps.

Scott 1468, Mail Order Anniversary of 1972, is a date error. Harriet B. Shaw of Alfred, Maine, began a mail order business around 1865 - M. Laurence, Linn's, Jan 26, 1987.

"Zil Eloigne Sesel," "Zil Elwagne Sesel," "Zil Elwannen Sesel," are all accepted spellings, thus are not errors, used by Seychelles Outer Islands postal authorities. S. Pendleton, Linn's, Jan 12, 1987.

Dominica \$4 Easter 1984 stamp. Traces of "Sorcerer's Apprentice" design appearing under "Pluto Chasing a Cat." - Linn's, Nov 3, 1986.

Bulgaria 60s 1985 European Swimming Championships. Inverted swimmer certainly looks better inverted. Linn's, Nov 3, 1986. Illustration.

AMERIPEX Souvenir Card error. Republic of Maldives withdrew a set of stamps and souvenir sheet from sale at AMERIPEX. One of the withdrawn stamps appears on the souvenir card. Stamps and sheet later sold at STAMPSHOW in August, 1986. Sheet is postmarked May 22, a date which is probably prior to its actual printing. K. Lawrence, Linn's, Jan 12, 1987. Illustration.

U.S. "Pueblo Pottery" FDCs dated April 13, 1977. Some have "Santa Fe" misspelled. Linn's, Nov 3, 1986.

Offset? 1980, 35th United Nations anniversary, 4-schilling Vienna value reported to have one on its face. Information needed to verify.

One cent Margaret Mitchell, Scott 2168, is being seen as a \$1 stamp. Does anybody have a cover or piece where this stamp did pay one dollar in postage?

"Make It In/Massachusetts/Year 1981" slogan cancel used in 1986 in Worcester, MA post office. D. Ames, Stamp Collector, Dec 13, 1986.

U.S. Postal Service has backdated the FDC on some precanceled 22¢ Biaon envelopes. Scheduled for Nov 1, 1986 release, not received until Nov 4, 1986, but some covers are canceled Nov 1.

Belgrade, Yugoslavia post office has used a meter machine to cancel covers. A usage oddity, with cancel ink error (red instead of black). E. Lewy, Linn's, Nov 24, 1986.

Canceled 23 times! Twelve times on front and 11 times on back, finally returned to sender marked, "No Such Address." See Clerk Quirks - Multiple Cancels," EPOC, Aug 1986, Linn's Nov 16, 1986. Illustration.

British Post Office regional public relations department was holding a free drawing to encourage the use of postal codes. Only one problem: BPO left the address off of the entry forms. L. Winick, Linn's, Jan 26, 1987.

Denmark's Consumer Council commemorative of 1987, "Kg-pris:14.00" should read, "Kg-pris:140.0." E. Lewy, Linn's, Feb 16, 1987. Illustration.

Alfred Baguet was famous for his labels and other Cinderella material but isn't listed in Philatelic Forgers - Their Lives and Works, by Varre E. Tyler (Robson Lowe, 1976). Baguet counterfeited stamps from France, Argentina, USSR, Crete, Greece, Haiti, Honduras, Icaria, Monaco and Samos. Anybody know of any others? L. N. Williams, Linn's, Feb 16, 1987.

Malformed plate number "8" on the 22¢ Flag coil. Three on one roll reported. Any others? D. Jacobs, Linn's, Dec 8, 1986. Illustration.

"Chatter marks," a new doctor blade Freak. A series of closely spaced, parallel lines over entire stamp. On 13¢ Christmas, Scott 1703, 18¢ Flowers, Scott 1876-79, 20¢ Ponce de Leon, Scott 2024, and 20¢ Christmas, Scott 2026. Any others known? G. Brett, The U. S. Specialist, Jan 1987.

New Zealand postal authorities caught the "Cristmas" error and withdrew the stamps before sale. Four sheets of the 50¢ and two sheets of the 18¢ have been claimed, were stolen before the stamps were destroyed. Printer's waste, not error. Linn's, Nov 10, 1986. Illustration.

Statue of Liberty dual FDCs with the cancels switched. Linn's, Nov 17, 1986. Illustration.

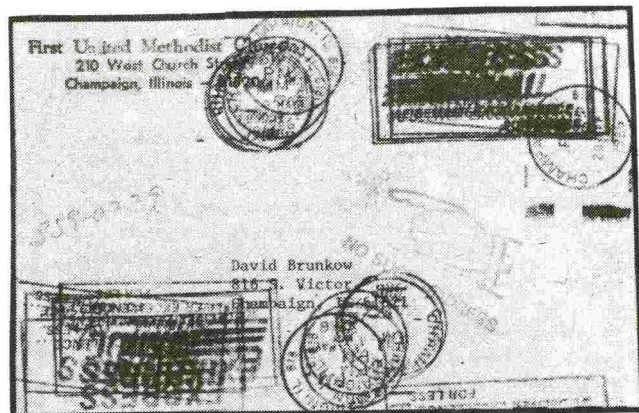
F. D. Roosevelt 1¢ of 1945 on "thin" paper? Anybody have any information on this variety? J. M. Hotchner, Linn's, Mar 9, 1987.



Normal



Invert



## AMERIPEX '86

### CHICAGO, ILLINOIS.

May 22nd to June 1st, 1986

LEOTON 15¢

MALDIVES 14¢

GRENADA 22¢

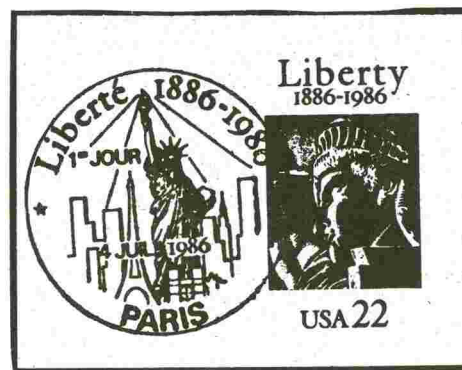
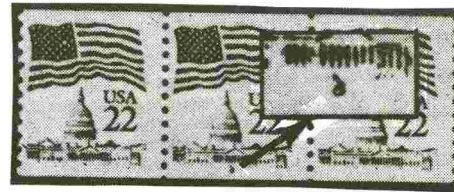
CUBA 4¢

DOMINICA 4¢

This special souvenir card is a tribute to AMERIPEX '86 the World's Greatest Stamp Show.

Shown on this card are five different Disney Stamps officially released by the respective Postal Administrations at the exhibition.

© 1986 WALT DISNEY PRODUCTIONS



EDITOR'S NOTES

I really can't tell you what happened on Page 10 of the last issue with the absence of the illustrations. They were on the page in their proper places when I made my photocopies for backup and to send to the President as an advance "bootleg" copy. However, when I received my issue of the EFOC the other day, I noticed these gaping spaces on Page 10.

Those sneaky Russians have been getting into some strange places and extracting vital information, but this is ridiculous!

If this issue looks a little shaky or shoddy, it's because it is. I'm putting this together literally on the road. As mentioned in previous EFOC issues, I'm on my way to Europe, and I've moved out of my home. Consequently, I don't have access to a number of things pertaining to the EFOC that keep handy at other times. Also, while this typewriter serves the purpose, it just really lacks the classy look of a 10 pitch Selectric correctable.

This issue of The Collector marks the debut of an irregular, regular column by Jim Harkleroad. It will become a regular part of the contents of EFOC, but on an irregular basis. Please feel free to comment on the column. Let us know what you think of it, like it or dislike it, should we keep it, drop it, modify it, or whatever.

We will attempt to attribute all input to this column so that those who are interested may do further research. Obviously, Jim does a lot of philatelic reading, but even an avid digester of material such as Jim can occasionally miss a hot item. If you should happen to see some EFO piece in a publication that Jim hasn't picked up on, please drop me a line and I'll mention it. Also, if possible, send me a photocopy of the article, and please don't forget to tell where you got it.



Also debuting with this issue is the first installment of an article by John Hotchner entitled, "Stamp Separation: Its Development From 1840 to Modern Times - A Specialized Study." Since the article is just about nine pages in length, it will appear in at least two, and possibly three issues.

---

NOTICE

Word has reached us of copies of Scott #1529, the 10¢ Skylab issue, being sold as a magenta color omitted error. No missing color errors are known at this time, and this one is not genuine according to the APS Expertising Service. The seller is aware of this but continues to peddle the stamps. He is not an EFOCC member. BEWARE.

---

DELAYS, DELAYS - JMH

The April issue was delivered in May. The Editor is blameless. He had it to the printer on time, but it seems I did not properly screen the Auction photos! The equipment our printer needed to compensate chose this moment to break down. As this is written (5/10) it should go out the end of this coming week. Please remember that whenever this sort of problem occurs, Auctioneer Joe Licata will adjust the Auction Closing Date to allow time for bidding.

---

PRESIDENT'S PREROGATIVE (Continued From Page 1)

- Manning an Information/Recruiting/Sales Table during the three days of the show and doing displays for it
- Creation of a cachet and cancel using EFOs as the theme, for WESTPEX '89 to use
- Filling up to 80 frames with EFO oriented exhibits
- Arranging an EFOCC membership meeting and food function
- Scheduling (and recruiting) 3 to 5 EFO oriented speakers during the three days of the show
- Arranging for a court of honor display of EFO rarities that will draw viewers and can generate publicity.

We can also do some other things if there is interest (and volunteers.)

These include:

- Producing an attractive souvenir card for general sale
- Contributing 3 or 4 articles to publish in an expanded WESTPEX program
- Making EFO contributions to the WESTPEX Youth Booth
- Having an EFO literature competition in association with the show

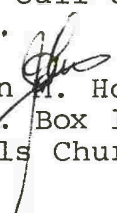
WHAT WOULD YOU LIKE TO WORK ON?

Any member who would like to share in the enthusiasm and fun of this

distant but exciting event is encouraged to write to me with ideas for other features, to volunteer to work on the planning committee, to head a subcommittee on one of the above noted facets, or to volunteer to participate as a table tender, exhibitor, speaker or in some other capacity.

We have 40 members from California, 30 members from nearby states, and a host of members who travel to other shows. If just half of you participate in planning and come to WESTPEX '89, we can have a wonderful time together.

Please write to me today or give me a call on (703) 820-5449 (after 6:30 PM) so we can get the show on the road.

  
-John M. Hotchner  
P.O. Box 1125  
Falls Church, VA. 22041-0125

---

STAMP SEPARATION  
ITS DEVELOPMENT FROM 1840 TO MODERN TIMES  
A SPECIALIZED STUDY  
by  
John M. Hotchner

Philatelic material and original research (denoted by a ) contained in this study show the development of a key reason for the success of the postage stamp: the ability of the user to easily use a tiny bit of paper to prepay postage. It is a subject not often studied, but of vital importance to every philatelist and user of stamps.

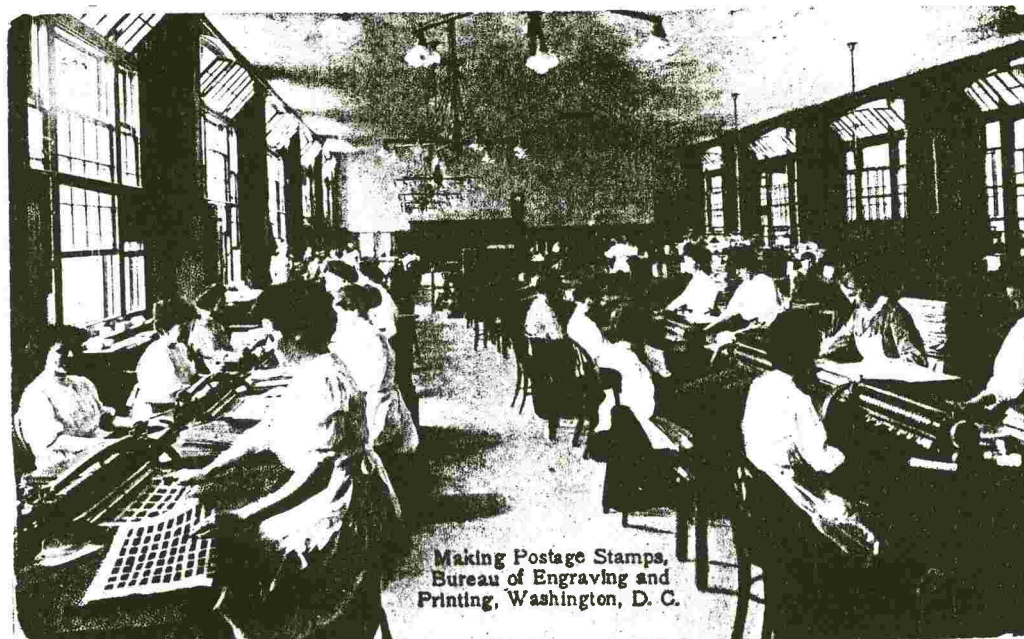
This study tells the story of the development of perforations as the primary method of stamp separation, leading the reader out of the period of early imperforate issues, where scissors and haphazard tears were the methods used, through the experimentation with varied forms of separation, and then into the area of varieties that occur during stamp production.

There are two key areas of this study:

Separation methods and machinery, and the problems that developed in their use, and

Perforation process interaction with other production elements such as plate layouts, paper shrinkage, and separation from production form into selling form, among others.

These strands are woven together to show through stamps the progression toward rapid, efficient perforating, long the most widely used and preferred method of separation.



The Perforating Room, circa 1910

1. Doubled Perforations.

a. Vertical Reentry. In this case, the bottom was the leading edge into the perforator.



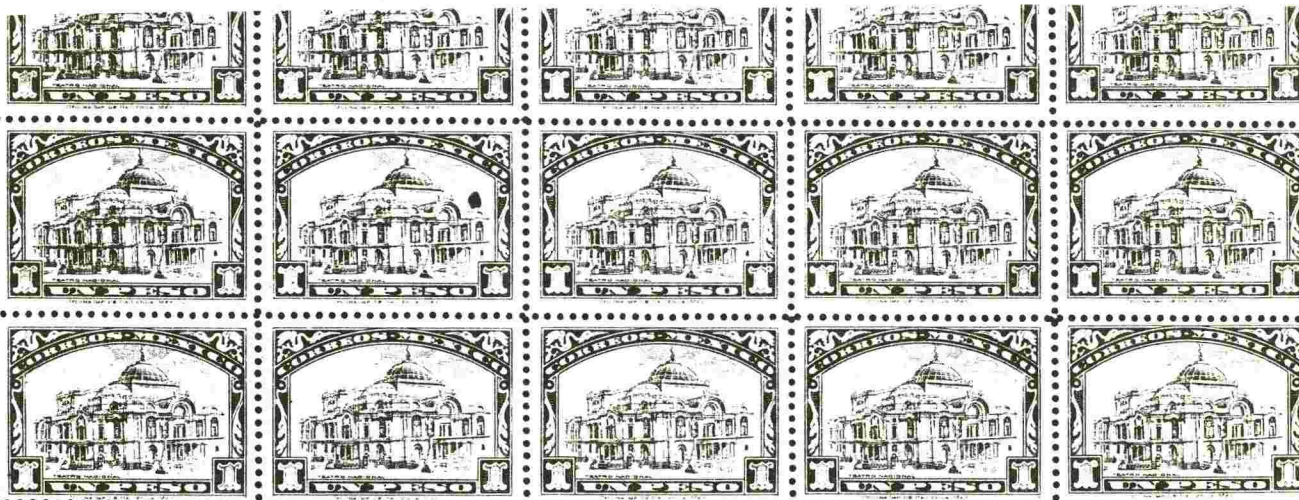
Issued January, 1903



Issued February, 1903

The possibility of a full doubled feed on the 2¢ cannot be ruled out. However, the partial blind perforations at the top of the off-true lines indicate a misfeed "feet first," and a subsequent correction. The 1¢ double, being at the bottom of a 4 pane sheet, was likely passed by the operator onto the next station on the assumption that the top two panes would be usable.

b. Intentional For Counterfeit Prevention. The doubled



Mexico - 1923

perforations in the right, left and bottom margins of the sheet were intended to prevent use of the watermarked paper to produce counterfeits. (The sheet contains seven Type II "Missing Eagles" - see the tip of the flagpole under the "M" of "Mexico.")

2. Misperforations.

a. Comb Problems. Comb perforation can be readily identified as the cause of these misperfs.



New South Wales - 1888

The sheet was inserted incorrectly. The operator noted this after the first strike and make the necessary correction.

# WORLDWIDE STAMPS & POSTAL HISTORY

## Schiff Auctions



"Especially for Specialists (R)"



If you do not get our catalogs you are missing out! Send \$8.50 (\$12.50 overseas) for a year's subscription to catalogs and prices realized or send \$1.00 (\$1.50 with prices realized) for our next auction.

Catalogs picked up at our office are complimentary.

### WHAT IS A SCHIFF "ESPECIALLY FOR SPECIALISTS®" AUCTION?

It's an auction designed with YOU in mind, whether you are a buyer or a seller of U.S. or Worldwide stamps.

**FUTURE AUCTION DATES**  
**U.S. & Worldwide Stamps and Postal History**  
 AUCTION 184, JULY 9-10, NEW YORK CITY, NEW YORK  
 AUCTION 185, LATE SUMMER, LOCATION TO BE ANNOUNCED  
 (Consignments now being accepted for our future auctions.)

**WE INVITE YOU TO CONSIGN**  
 individual stamps, covers or collections for Public Auction or Private Treaty Sale.

**WE ALSO PURCHASE OUTRIGHT!**  
 Contact us first, describing your material. Include your address and phone numbers.



**Jacques C. Schiff, Jr., inc.**  
 195 MAIN ST.  
 RIDGEFIELD PARK, NJ 07660  
 Licensed & Bonded Auctioneers  
 Established 1947

TELEPHONE: 201-641-5566, From NYC: 662-2777



A BROCHURE DETAILING OUR SERVICES SENT UPON RECEIPT OF A STAMPED SELF-ADDRESSED LEGAL SIZE ENVELOPE.

**• ESPECIALLY FOR SPECIALISTS**

**• ESPECIALLY FOR SPECIALISTS**

## JACQUES C. SCHIFF, JR.

Jack Schiff has been in the stamp business since 1947 when he owned the stamp department in a stationery store in New York City while he was still attending high school. After two years of military service during the period 1951 to 1953, during which he worked at philately during his free time, he returned to operate as a mail order dealer. Then in 1964 he began to run mail auctions, and in 1966 he commenced public auctions.

Having a keen interest in the specialized aspects of philately, he was determined to prepare auctions that would serve collectors of all types of stamps and covers, but which would cater to specialists. His logo, "Especially for Specialists<sup>(R)</sup>," refers not only to his company's manner of describing auction lots, but to listing them in special sections rather than in the usual numerical manner. He has a worldwide clientele of collectors and dealers of U.S. and Foreign stamps and Postal History.

Jack's personal interest in United States Freaks, Errors, and Varieties encouraged him to present these special sections in each of four catalogues at a time when few collectors took EFO collecting seriously. Noting that most dealers offered all varieties as errors, he chose to list those items that could command Scott catalogue listing as Major Errors.



The wonderful personal advice and assistance provided to Jack by such distinguished philatelists as George Brett, Belmont Faries, Peter Robertson and John Hotchner, to name just a few, has made it possible for him to learn the intricacies of the printing of United States stamps, Jack modestly avers. Since the early 1970s, the personal cooperation of the directors of the Bureau of Engraving and Printing and their assistants has helped him to keep abreast with the many developments and changes in the preparation of United States stamps.

Jack currently is still very active in his business and travels quite extensively in that connection. Although at the time the Editor received the following the year was less than 75 days old, Jack had already logged in excess of 25,000 miles.

---

Q & A Dormant - Experts Wanted+ Questions to Revive

EFOCC is blessed with many members who have studied various aspects of EFO collecting. Those of you willing to serve as a resource to help less experienced members are asked to drop me a note - a post card is fine - to let me know you are willing to serve. A volunteer from among the group - or another member - to serve as Q & A Editor for the EFOC is also needed. -John Hotchner, P.O. Box 1125, Falls Church, VA. 22041.

VAPEX '87 WELCOMES EFOCCERS

Virginia Beach at VAPEX time is a delight - uncrowded but most of the facilities and shops still open. VAPEX '87, November 20-22, will be pleased to have you visit for the Eastern Regional Meeting of our EFO Collector's Club.



There will be EFO exhibits, a Dutch treat breakfast at 8:30 A.M. on Saturday, November 21 and a presentation by Frank Pogue on Postal Stationery EFOs.

I and other EFOCC officers/activity chairpersons will be attending VAPEX. We hope to mee many of our members!

The show will be at the Pavilion, Virginia Beach's Convention Center at 1000 19th Street in Virginia Beach. The official hotel will be the nearby Pavilion Tower. In addition to 350 frames of competitive exhibits, VAPEX will host over 30 dealers from all over the U.S., a 900 lot auction on Friday night, and the annual convention of the American First Day Cover Society and the Vatican Philatelic Society.

The Eastern Shore area of Virginia includes such historic sites as Williamsburg and Jamestown, and up-to-date attractions such as Busch Gardens and the Norfolk Naval Base. Make VAPEX weekend a treat for the whole family! Further information from:

John M. Hotchner, P.O. Box 1125, Falls Church, Virginia 22041-0125

EFO POST \* EFO POST \* EFO POST \* EFO POST \* EFO POST \* EFO POST \* EFO

ERROR SPECIAL: 14¢ Sinclair Lewis (Scott 1856) Imperf between pair; strip of 4 stamps \$7.95; sheet \$80. Marvin Robinson, 154 Robards Court, Harrodsburg, KY 40330

ERRORS AND FREAKS: Free Price List. Ted Yonkers, 6118 Edith N.E., #167, Albuquerque, N.M. 87107

WANTED: All coils with plate numbers on top. Will trade others - PNCs or EFO stamps. Alan Rosenberg, P.O. Box 2502, Syracuse, NY 13220-2502

WHILE THEY LAST: Any member involved with children's stamp groups; will send you 100+ Scott 231 for 22¢ SASE. Earl McAfee, Box 3266, Champaign, IL 61821

PLATE BLOCKS: \$100 face in 3¢ to 10¢ commem. plate blocks for \$120. First come, first served. I'll pay postage to send to you. John Hotchner, P.O. Box 1125, Falls Church, VA. 22041-0125

U.S. SHEETS (With Plate Blocks): \$100 face in 3¢ to 13¢ sheets for \$95. Each lot all different. I'll pay postage to send to you. John Hotchner, P.O. Box 1125, Falls Church, VA. 22041-0125

BROADENING OUR APPEAL - "UNREPORTED" BOOKLET ITEMS  
by Earl McAfee, Box 3266, Champaign, IL 61821

One of the functions of a specialized journal such as ours is to record items for future reference that might be of interest to its society's membership, even years away. It was suggested that our featuring only booklet foldovers was too restrictive, and that we should show anything of interest concerning booklet items. Our membership must have in its collections items that have not appeared in this or other journals or books. Can you help us record them in the "Collector" for future reference?

Your pieces can be either major or minor EFO's that, to your knowledge, have not been pictured in any journal or book. (They can have been pictured in auction catalogs or newspapers. These are not as available for reference as society journals.) They could include foldovers, ink smears, plate varieties, misperfs, miscuts, etc.

To kick off we have illustrated a major and a minor item. Figure 1 is an upper right side plate number (see discussion, Collector, October, 1979, pages 5, 6) of the Gilbert Stuart "Washington" booklet issue. It has an unusually large right side percentage (72% by Phil Buetel's gauge) for this issue. Louis Repeta, our expert on the 3¢ Stuart Washington issues, said that, until seeing a copy of this pane, his records showed 10% as being the largest right side percentage reported on the Scott #720b.\*\*

The owner of this pane acquired it from a dealer over ten years ago for the "usual percentage over catalog" for the more common left side plate numbers. For those of you not familiar with the term, "percent over catalog", the explanation is simple. On 360 subject booklet panes where the plate number is normally trimmed off, some dealers start with the catalog value as "base", and then add the same percent addition to this base as the percent of the plate number showing. Considering that right side plate numbers are much more scarce than left side, the owner of the #720b pane got an exceptional bargain!

Figure 2 is an enlargement of stamp #4, top pane, of the current \$2.20 booklet. There is one of those small, notorious "doughnuts" in red ink just below the flag and to the right of the flag pole. This was noticed some time after purchase at the Post Office, so there was no opportunity to see how many booklets were affected. Thus, it probably exists in its collection as a one-of-a-kind EFO item, but with little premium value (a dozen glazed doughnuts at the local bakery?).



Figure 1

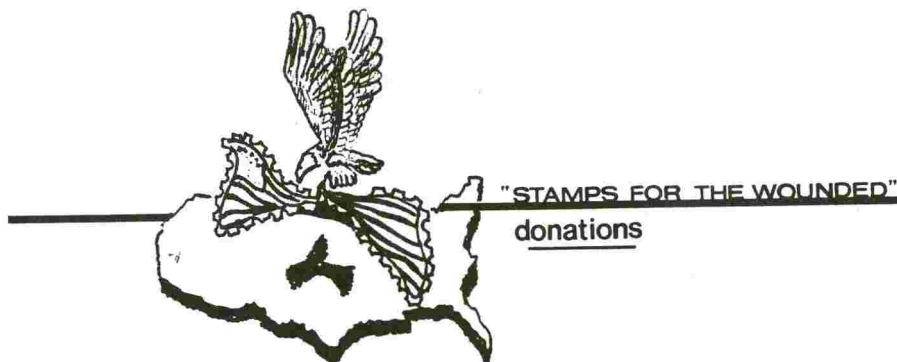


Figure 2



Have you any "unreported" booklet items in your collection, or know of anyone who does? Send us a good xerox picture of the items and let us get them recorded for future reference. If possible, send any type of background information you can with it: can owner's name be used, how and where obtained, any unusual story involved, value, cost, etc.

\*\*According to a note from Lou, his records show only upper right side plate numbers as being reported on the Stuart "Washington" booklet. Has anyone a lower right side plate number on this issue, any percentage? Let's report it here if you do!



Thanks to Lou Novacheck and Robert Mis for several nice donations to SFTW.

SFTW serves sick and wounded veterans in over sixty of the Veterans Administration Hospitals. Stamps are used as a proven successful therapy.

Stamps, including commemoratives and revenues, envelopes with special postmarks, FDCs, first flights etc., may be sent to John Hotchner, a SFTW worker, at Box 1125, Falls Church, VA. 22041-0125. Donations are tax deductible. Receipts upon request.

COPYRIGHT 1987 EFO COLLECTORS' CLUB. All contents copyrighted by EFO Collectors' Club. Authors and contributors have express permission to reuse any of their own material contained herein elsewhere and without restriction. Except for material reprinted herein or material individually copyrighted by the author, permission is granted for any material herein to be reprinted elsewhere as long as full credit is given, including Volume and Issue Numbers, and the address of the EFOCC Secretary.

The EFO Collector is published six times annually during alternate months. The deadline for any issue is the 15th day of the month preceding the month of issue, e.g., the deadline for the April issue is March 15. Send material directly to the Editor. Subscription membership applications should be sent to the Secretary, along with annual dues of \$10.00.

Advertising for the EFO Collector will be accepted at the following rates: Full Page - \$72.50; Half Page - \$42.00; Quarter Page - \$6.50; classified trade or buy/sell ads at 5¢ per word. Contract display ad rates are approximately 20% less. EFOCC members are entitled to the contract rate for all single insertion display ads and to three free EFO POST, 35-word (excluding address) classified ads annually.

ALL INQUIRIES AND CLASSIFIED ADS ARE TO BE DIRECTED TO THE ADVERTISING DIRECTOR.

EFO POST ads (ONLY) go directly to the Editor.

#### 1986-88 EFOCC OFFICERS AND CHAIRMEN

**PRESIDENT**  
John M. Hotchner  
P.O. Box 1125  
Falls Church, VA 22041-0125

**TREASURER AND AWARDS DIRECTOR**  
Phillip E. Nazak, Sr.  
P.O. Box 662  
Binghamton, NY 13902-0662

**EFOC MAILER**  
E. Steven Brand  
P.O. Box 1058  
Marathon, FL 33050

**BOARD MEMBER-AT-LARGE**  
Stuart M. Krensky  
Suite 9-L, 1716 Ocean Avenue  
San Francisco, CA 94112

**EDITOR**  
Lou Novacheck  
P.O. Box 149  
Ft. Meade, MD 20755-0149

**PUBLICATIONS DIRECTOR & BOARD MEMBER**  
Daniel S. Pagter  
P.O. Box 6394  
Albany, CA 94706-0394

**VICE PRESIDENT & BACK ISSUES DIR.**  
Lou Repeta  
76 Billmore Avenue  
Oakdale, NY 11769

**SECRETARY**  
CWO James E. McDevitt, USCG (Ret.)  
1903 Village Road, West  
Norwood, MA 02062-2524

**ADVERTISING DIRECTOR**  
(Vacant)

**AUCTION DIRECTOR**  
Joseph A. Licata  
209 East 11th Avenue  
Conshohocken, PA 19428

**CIRCUIT DIRECTOR**  
Howard A. Pohl  
P.O. Box 695059  
Miami, FL 33269-2059

**PUBLICITY DIRECTOR**  
Richard H. Hunt  
23 Old Orchard Lane  
Trumbull, CT 06611

EFO Collectors' Club

CWO J. E. Mc DEVITT  
Secretary-EFOCC  
1903 Village Rd. - W.  
Norwood, MA 02062-2524



Errors, Freaks, Oddities  
Collectors Club

Dear

Dues time is here again. Your membership/subscription expiration date is June 30, 1987. Dues for 1987-88 have risen to \$10.00 to assure that we can afford to send the EFOC 1st class. Please forward your dues at your earliest convenience, and indicate below any other services or back issues you may want. You may also prepay future years' dues at \$10.00 per year, or make donations.

All Back Issues of the Collector Available

Why not take this opportunity to complete your series of Collectors. A complete run of the EFO Collector through Volume VII can be had for \$37.50. Individual copies are also available at the cost shown:

78-79 Volume I, #1-10 - Total \$6.75  
79-80 Volume II, #1-6, \$1.00 each  
80-81 Volume III, #1-4, \$1.00 each  
81-82 Volume IV, #1-6, \$1.00 each

82-83 Volume V, #1-4, \$1.50 each  
83-84 Volume VI, #1-6, \$1.50 each  
84-85 Volume VII, #1-6, \$1.50 each  
85-86 Volume VIII, #1-6, \$1.50 each

STILL  
AVAILABLE



Pairs \$1.00  
(Used)



Pairs \$1.50  
(Mint)  
Line pr. \$3.50

Dues enclosed - payment through June 30, 198\_\_ : \$ \_\_\_\_\_

Members outside North America, please add \$10.00  
for air mail delivery for each year of dues paid: \$ \_\_\_\_\_

Back Issues of the Collector (Please specify which ones requested -  
\_\_\_\_\_ \$ \_\_\_\_\_

Testing Coils (Specify) \_\_\_\_\_ \$ \_\_\_\_\_

TOTAL ENCLOSED - \$ \_\_\_\_\_\*

\*Please make checks payable on U.S. banks and make them out to EFOCC.

DO NOT SEND CASH!!!!!!!

(NAME) \_\_\_\_\_ (Membership #) \_\_\_\_\_

(ADDRESS) \_\_\_\_\_

Any thoughts or suggestions on EFOCC: \_\_\_\_\_

PLEASE DON'T DELAY - SEND IN YOUR DUES TODAY!



**EFOCC AUCTION #31**  
**AUGUST 1987**

**UNITED STATES**

**A. PERFORATIONS**

**LOT # SCOTT**

LOT #	SCOTT	DESCRIPTION	MINIMUM BID
1	178A	Mint NG margin imperf vert. pair with APS Cert.	
2	538a	Both stamps stained & have closed tears.	80
3	540C	Mint FH VF vert. pair imperf between.	30
4	548	Mint OG FVF vert. pair imperf between.	30
5	Mix	MNH Ave horz. pair with wide outside margin.	7.50
6	583	MLH 554 and MNH 637; both 5mm misperfs.	7.50
7	634	MNH imperf waste pair.	20
8	637	MNH Plate block/4 with horz. perfs thru top of "2".	25
9	642	Used single with 75% of plate #18910 inside stamp.	7.50
10	653	Used single with 90% of plate #18614 inside stamp.	45
11	682	MNH block with horz. perf shift 9mm up.	10
12	805b	MNH single with horz. perf shift 5 1/2mm to right.	20
13	924	Mint NG corner precancelled pair imperf between.	5
14	1035	MNH single with horz. perf shift 9mm up.	8
15	1035	MNH Plate block/4 with horz. perf shift 4mm down.	20
16	1159	MNH block/4 misperfed thru "Liberty".	10
17	1281	Used block/6 with perfs shifted progressively to the right.	7.50
18	1281	Two MNH vert. misperfed singles; one with "3c" missing.	10
19	1283B	Two blocks/4; one with 4mm vert. misperf and one with 7mm horz. misperf.	25
20	1286	MNH Plate block/4 with horz. perfs shifted up 5+mm.	17.50
21	Mix	MNH Plate block/4 with horz. misperf leaving entire plate #34369 inside stamp.	30
22	1290	MNH 3mm misperfed singles; 1289, 1290, and 1294.	12
23	1292	MNH Plate block/4 with horz. misperf thru name.	17.50
24	1305a	MNH Plate block/4 with vert. misperf leaving entire plate #31338 inside stamp.	30
25A	1305E	MNH imperf coil pair.	80
25B	1305E	Used 2mm misperfed coil pair with torn corner.	2
26	1360	MNH set of 4 coil pairs misperfed 5 1/2, 6 1/2, 7 1/2, and 8mm. (5 1/2--7 1/2mm shown)	40
27	1394	MNH Plate block/4 with beautiful design change caused by horz. perfs shifted up 6mm.	40
28	1484	MNH Plate block/4 with horz. perf shift thru top of "Eisenhower USA".	15
29	1503	MNH single with horz. perf shift 6-8mm up.	12.50
30	1518c	MNH corner single with 7-9mm vert./diag. misperf and single with 11-14mm vert./diag. misperf.	15
31	1519b	MNH VF precancelled imperf coil pair.	45
32	1527	MNH VF imperf line pair.	15
33	1563	MNH margin single with plate #34443 inside stamp.	10
34	1564	MNH corner block/4 with horz. perf shift 3-5mm down.	20
35	1576	MNH margin single with vert. perf shift 9mm right.	6
		MNH margin single with 2-way perf shift; 10mm down and 5mm to left.	10

36	1603	MNH Plate block/4 with 2-way perf shift leaving 4 plate #'s (3693) inside stamp and "4" in top margin.	45
37	1615cd	MNH FVF coil pair imperf between except for one perf at top.	5
38	1618b	MNH VF imperf coil pair.	Cat. 30
39	1683	MNH margin block/4 with perf shift 3 1/2mm left.	Cat. 25
40	1726	MNH ME block/6 with horz. perf shift 6mm down.	17.50
41	1727	MNH single with vert. perf shift 7 1/2mm right.	50
42	1727	MNH margin single with part of design missing because of 7 1/2mm perf shift.	8
43	1764-7	MNH margin block/4 with horz. perf shift 15mm up.	10
44	1823	MNH margin single with part of design missing because of 14mm perf shift.	25
45	1823	MNH single with horz. misperf 6mm up.	20
46	1863	MNH margin pair with off center blind perfs 2 1/2mm into left hand stamp.	12.50
47	1869	MNH margin single with perf shift 8mm down. Est. 20	15
48	1900	MNH matching misperfed plate strips of 3 with plate #'s 1 and 2.	8
49	1908	MNH matching misperfed plate strips of 5 with plate #'s 3 and 4.	10
50	2066	MNH margin block/4 with horz./diag. perf shift 2+mm.	12
51	2072	MNH margin block/4 having striking vert./diag. perf shift.	10
52	2112	MNH imperf coil pair.	40
53	2142	Mint OG single with diagonal misperf 10-14mm.	30
54	C11	MNH margin 3mm wide single with perfs 1mm into stamp. Blue vignette shift 1mm right. Est. 35	9
55	C23	MNH block/4 with horz./diag. perf shift 2+mm.	12
<b>B. INKING</b>			
56	501	MLH OG FVF single with ink smear upper right corner.	10
57	529	MLH OG FVF single with right side stamp doubled.	10
58	583	Mint OG Fine margin pair w/ multiple heavy wet smears.	12.50
59	583	MLH OG Ave Plate block/4 with bad vertical wipe smears on all 4 stamps.	20
60	712	MNH block/6 with ghosted plate #'s in margin.	10
61	718	MLH OG FVF Plate block/4; V/LH on top right stamp & smear thru plate #.	20
62	900	MNH FVF Plate block/6 with 60mm diag. ink smear.	8
63	1596	MNH VF ME block/6 with 25mm brown smear.	7.50
64	2059-62	MNH margin block/4 -- excessive ink changes the blue and green color to different shades. (See BEP letter)	15
65	2115	Used cut square. Stamp with blue capitol.	10
66	2115	MNH strip/5 with fine horizontal blue & red streaks.	4.50
67	C32	MNH margin block/4 wet printing.	20
<b>C. COLOR SHIFTS</b>			
68	833	MNH single with Harding portrait shifted into frame at left.	20
69	948	FDC with red "10c" dropped.	7.50
70	1075	Two MNH Souvenirs; one with 3c stamp shifted up; one with 8c stamp shifted up.	20
71	1352	Used Grand Union Flag of 1776 with red cross shifted up 3mm.	6

72	1359	MNH single with intaglio shifted up 2 1/2mm.	12.50	104	721	Used Ave "Smallbox" coil single. Variety found only on the 1932 Washington coil and is an offset from the top roller of the vert. perf machine. Roughly 200 of these stamps have come to light. Full description and enlargement provided.	7.50
73	1366	MNH single with 1 1/2mm misregistration of green and red colors.	10			M H vert. margin pair. French listed "Blue Moon" plate variety.	Est. 31
74	1374	MNH single with 4mm intaglio color drop.	7.50	<b>F. PAPER</b>			
75	1375	MNH single with 5mm intaglio misregistration.	20	106	114	Stamp on cover with very nice crease diagonally across LR corner on tatty cover.	40
76	1382	MNH corner block/4 with red color shifted 4mm left.	20	107	905	MNH Plate strip/20; 6 stamps have double paper gutter snipe at top. Printing over tape. Red horz.crayon line for destruction.	40
77	1460	MNH single with green color shifted 4mm down.	7.50	108	945	MNH plate block/4 with corner fold--interrupted crazy perfs in margin.	20
78	1473	MNH margin single with intaglio shifted 6mm left.	15	<b>G. BOOKLETS AND PANES</b>			
79	1488	MNH single with yellow "sun" shifted 3mm out of frame to the right.	12.50	109	634a	MNH miscut pane with 40% LL #19973.	5
80	1501	MNH Zip block/4 with intaglio black shifted down 2mm.	10	110	804b	MLH miscut pane with 45% UL #22403.	2.50
81	1555	MNH FVF having radical brown color shift resulting in 3-D effect.	7.50	111	807a	MNH miscut pane with 45% UL #24425.	5
82	1727	MNH margin single with intaglio shifted 6mm down.	15	112	1036a	MNH miscut pane with 25% UL #26468.	3
83	1926	MNH black color shift leaving "18c" on wrong side of the stamp.	7.50	113	1036a	MNH miscut pane with 55% LL #26409.	5
84	1926	<b>MNH SAME.</b>	7.50	114	1036a	MNH miscut pane with 60% LL #26516.	6
85	C11	MNH Fine corner single with vignette shifted 2mm to right and 1 1/2mm down.	7.50	115	1213a	MNH miscut pane with 50% LL #28085; Slogan 3.	6
86	C11	Two MNH top margin singles; one with vignette shifted up 1 1/2mm and one shifted up 2 1/2mm, left 1mm.	30	116	1213c	MNH miscut pane 4mm to right. Slogan 2.	25
87	C11	MNH Fine Plate block/6 with vignette shifted up and touching frame. (couple of perf separations) Est. 120		117	1284b	MNH miscut pane 2 1/2-3 1/2mm to right. Two denominations in right stamps.	7.50
88	C11	MNH Ave Plate block/6 with vignette shifted up and touching frame. Est. 90		118	1288b	MNH booklet pane with tab and having joint line at right and vert. misperfed 12mm thru left stamps.	20
89	C11	MNH A/F Plate block/6 with vignette shifted down 1 1/2mm and right 1mm. Est. 100		119	1395b	MNH miscut pane with 90% LL #32911.	9
90	C11	MNH Ave margin block/6 with vignette shifted 1 1/2mm to the right. Est. 48		120	2113a	MNH VF complete booklet; 2nd pane has very dry faided printing on 4 stamps.	40
91	C11	MNH Fine Plate block/6 with vignette shifted 2mm to the right. Est. 82.50	45	121	2209a	MNH complete booklet; both panes have 1mm yellow color shift to right and out of stamps. (not shown)	4
92	C95-96	MNH block/4 with intaglio colors shifted 6mm down.	2	122	C72b	MNH miscut booklet pane/8 -- 2 1/2-4mm.	4
93	J89	MNH margin block/8 with "lc" off center.	2	<b>DONATION LOTS</b>			
<b>D. TRIMMINGS</b>				D1	Mix	Used singles; 156 Fine with overall rough perfs and 158 VF with bent bottom perf pin.	5
94	634	MNH gutter snipe single with 2mm of stamp from sheet below.	5	D2	804B	MNH miscut pane with 30% LL Plate #22010.	4
95	635	MNH margin block/4 with 6 1/2mm of sheet adjoining at top.	15	D3	807a	MNH miscut pane with 60% LL Plate #23771.	5
96ex	Mix	23 nice used coil singles, pairs and strips; miscut to show plate #'s and misperfs.	25	D4	1035	MNH Plate block/4 with moderate wiping smear; unusual on PB and dry printing issue.	5.50
97ex	Mix	Five (5) miscut coil line pairs w/ partial plate #'s; 1054, 55, 57, 1304 & 05.	8	D5	1036a	MNH miscut pane with 40% UL plate #26154.	5
98	1057	MNH miscut coil line strips/5 with 40% top and bot. plate #25754.	10	D6	1036a	MNH miscut pane with 35% UL plate #26155.	5
99	1057	MNH miscut coil line strips/5 with 30% top and 50% bottom plate #25719.	10	D7	1547	MNH striking blue color shift so that there is no color over "on" of conservation.	8
100	1057ex	Five (5) MNH miscut coil line strips/5 showing partial plate #'s.	10	D8	C98	MNH single w/ eye catching progressive red color shift.	8
101	1057ex	SAME as above.	10	<b>E. PLATE AND TRANSFER VARIETIES</b>			
102	1286	MNH Plate block/4 with 6mm extra margin having full EE bars. Seldom seen!	15	<b>EPOCC AUCTION #31 CLOSSES SEPTEMBER 15, 1987. ---GOOD LUCK!---</b>			
103	Mix	Various Mint plate varieties; 704 plate block/6, 705 block/9, 709 margin block/6, 710 margin block/6 and 710 margin block/4 with some varieties listed in Scott.	7.50				



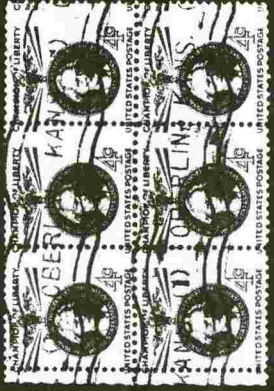
19897



3 10



6 11



16 55



18 20



1 4 5



5 6 8 12



13 14 17 18



21 22 25 28



25A 28 30 31



32 33 34 35



36 37 38 41



42 43 44 45

1 4 5

5 6 8 12

13 14 17 18

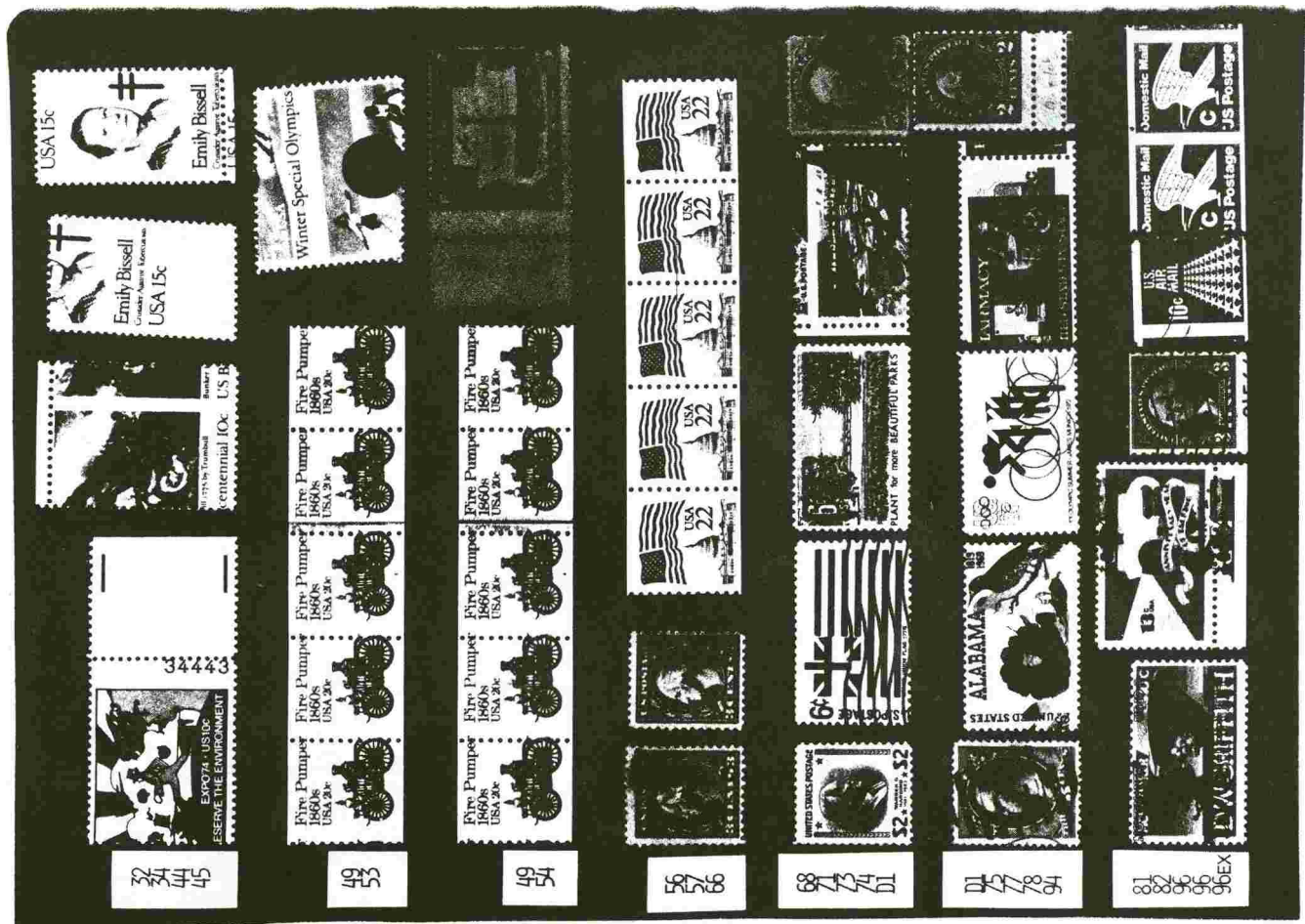
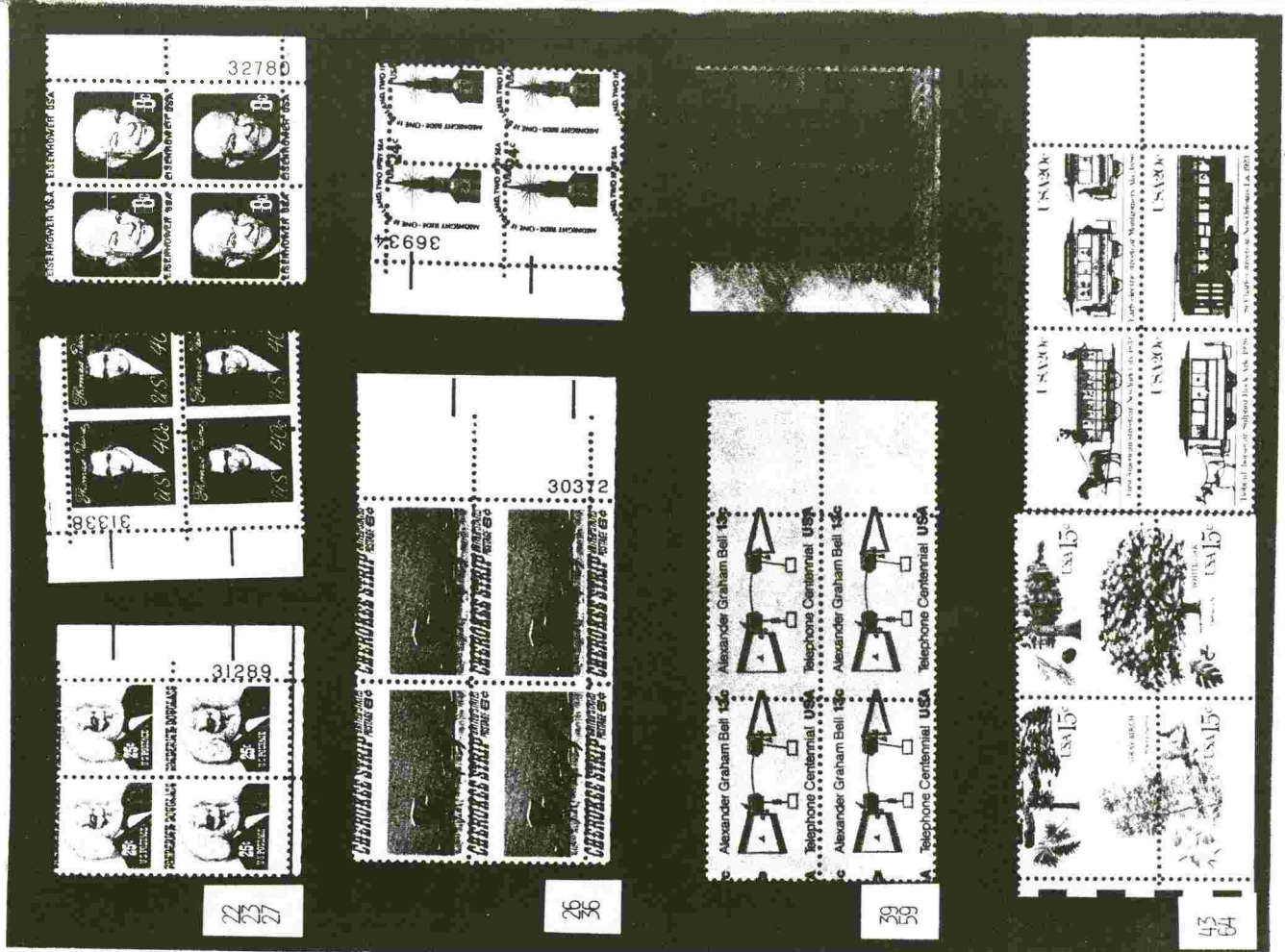
21 22 25 28

25A 28 30 31

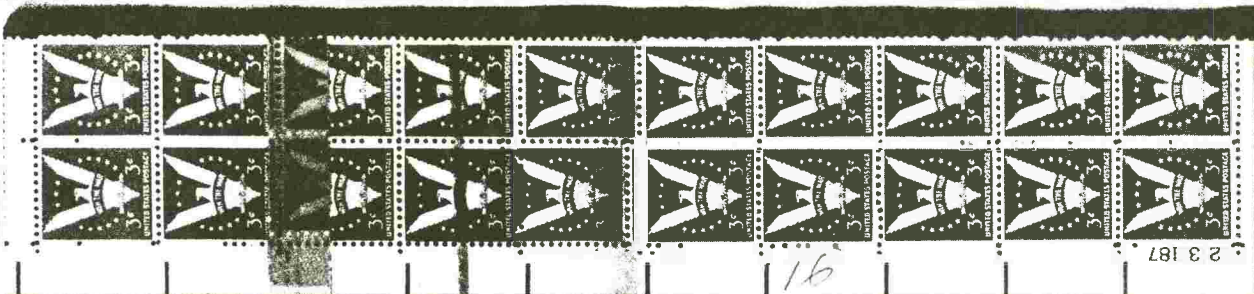
32 33 34 35

36 37 38 41

42 43 44 45







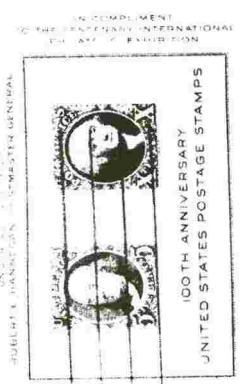
67  
104  
107



80



118  
172  
177  
107



Michael D. Lehen  
106 East 41st Street, #530  
New York 17, N.Y.

69



109  
110  
111  
112  
113  
114  
116

115  
119  
123  
124  
125  
126





90  
105



91  
103



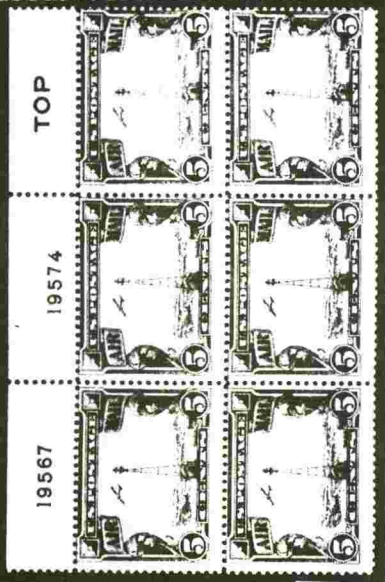
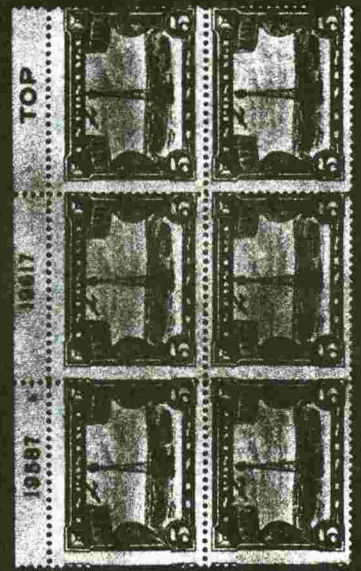
103  
106  
106



70  
70



88  
76



89  
108

**EFOCC AUCTION #29 REPORT**

Participation in the Auctions continues to increase with each EFOCC issue:

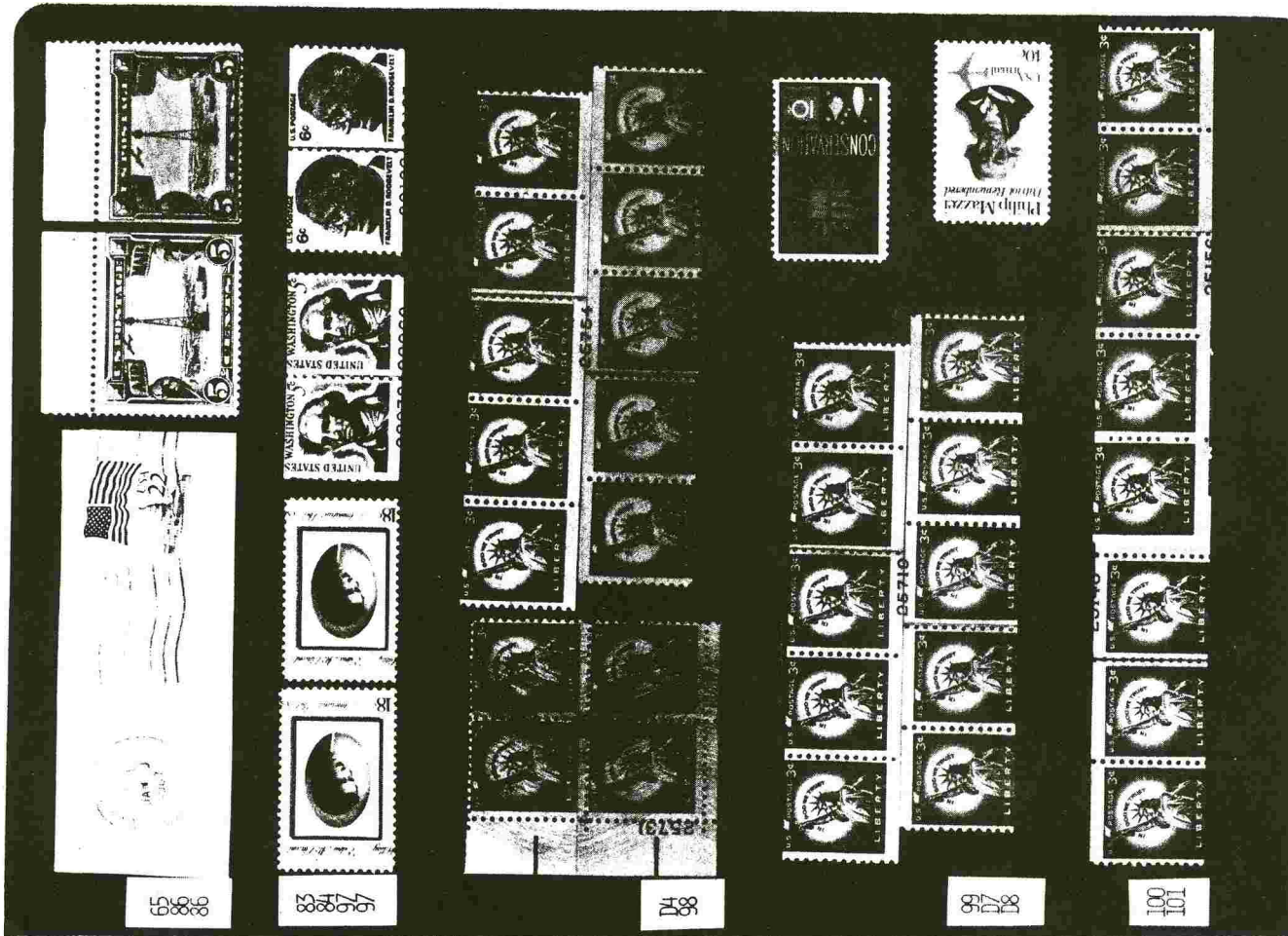
Total number of lots-----141  
 Number of lots bid-----15  
 Total number of bidders-----150  
 Successful bidders-----31  
 Most popular lots-----#44, 47, 50 & 123

One particular bidder was disappointed because his bids totaled over \$215 but his successful lots only totaled \$35. I also was unlucky and out bid on a couple of attractive EFO's. Many EFO lots have under estimated values and receive very high bids. The fact is that several of the EFO's in the Auction are quite rare and possibly only one-of-a-kind. No one person or reference book can determine their value. Popularity is the key. And yes, eleven lots were settled with the bidder having the earliest post mark. So don't get discouraged; there's always next time.

Special thanks to the following EFOCC members for Auction donations: Ed Silver #14; James Long, Jr. #96; Kalman Levitan #378; Mark Congelio #526; John Fera #534; Norman Fincher #551; John Coggins #558; James Hall #565; Robert Mis #570; Ron McKinney #575 and David Smith #585.

**AUCTION #29 PRICES REALIZED**

LOT#	PRICE	LOT#	PRICE	LOT#	PRICE
1	47.50	34	18	73	11
2	11	35	35	74	11
3	8	36	12.50	75	7
4	9	38	19	79	10
5	7.50	39	3	79	5
6	12	40	42	80	8
7	20	41	46	81	8.50
8	10	42	14	82	6.50
9	1	43	34	83	21
10	1	44	32	84	35
11	3.50	45	1	85	8
12	8	46	12	85	27
13	10	47	37	87	22
14	5.50	48	13	89	42
17	1	40	22	90	26
18	1.50	52	19	91	9.50
19	8.50	55	16	92	1.5
11	4.50	57	5	93	9
23	16	58	5	94	7
24	13	59	13	97	22
25	33	62	37	98	3.50
26	7.50	63	8.50	90	19
27	31	64	2.50	100	20
28	4	65	17	101	12
29	48	70	12	102	5
30	8.50	71	65	103	13
32	15.50	72	11	104	12
33				105	4



65  
86  
88

83  
84  
97  
97

D4  
D8

99  
D7  
D8

100  
101



Bidding Area	Increment	Raise
1.00 -	9.50	.50
10.00 -	49.00	1.00
50.00 -	97.50	2.50
100.00 -	495.00	5.00
500.00 +		10.00

All irregular bids will be reduced to the next lowest level Any bids which are not submitted in good faith in the estimation of the Auction Director may be rejected.

All lots will be sold to the highest bidder at one increment over the second highest, unless the MB is not reached. EFOCC Auctions reserves the right to remove any lot.

A Set of Auction Rules is available for a SASE.

ACCEPTABLE ABBREVIATIONS AND WHAT THEY MEAN

- CENTERING  
 AVE - Perforations cut design  
 F - Fine, perfs clear of design  
 VF - Very fine, well centered with opposite sides nearly equal  
 XF - Extremely Fine, perfect centering on all sides
- GUM  
 NH - Never Hinged  
 LH - Light Hinge Mark  
 H - Hinged, some gum loss  
 HR - Hinge remnants, some pieces adhere to stamp  
 HH - Heavy Hinge, much gum disturbance and/or heavy hinge remnant  
 OG - Original Gum  
 RG - Regummed  
 NG - No Gum  
 NG as Issued - no gum on stamps, issued without gum
- cat. - catalog value  
 chng - change  
 DBL - double  
 dn - down  
 EST - Estimate of value  
 horz - horizontal  
 Imp - Imperforate  
 lf - left  
 litho - lithographic printing
- M - Mint, uncanceled  
 MB - Minimum Bid, lowest price at which lot will be sold  
 mm - millimeter  
 norm cpy - normal copy  
 Pl # - Plate Number  
 pr - pair  
 prnt - printers  
 rt - right  
 SE - Natural Straight Edge
- SS - Souvenir Sheet  
 Shf - Shift  
 Used - cancelled  
 Vert - Vertical  
 w/ - with
- NP - No Photo  
 @ - at  
 Bklt - Booklet  
 blk - black  
 BLK - Block  
 btw - between

RETURN TO: Hotchner, POB 1125, Falls Church, VA. 22041-0125  
 Mailed From: EFOCC, POB 105R, Marathon, FL. 33050-0058

FIRST CLASS  
 FIRST CLASS



FIRST CLASS

LT COL El Ray Jenkins - 122  
 304 E. Kingswood Drive,  
 Enterprise, AL 36330