

The EFO Collector

Published by the EFO Collectors' Club, a nonprofit organization
Copyright 1987 by the EFO Collectors' Club.
APS Affiliate No. 103. Member COPO.

Presidents: John M. Hotchner

Editor: Howard Gates

Volume X, No. 1 (#53)

August 1987

Founded 1978

P R E S I D E N T ' S L E T T E R S P I P I P I

Howard Gates-- the ideal candidate for the job-- has taken over as editor of *The EFO Collector* effective with this issue. Howard's minibiography was published in *The EFOC*. I can only add that he and I have crossed paths at stamp shows for years. He is a regular at our EFO Club VAPEX breakfasts. And I have great admiration for his philatelic knowledge, his common sense, and his creativity. You will see evidence of all three in future issues.

To Lou Novacheck, the Club owes a great debt of gratitude. Not once but twice Lou stepped into the editor's chair when the club was in need of his services. Words can not express my thanks and appreciation. He has moved to Germany to be with his family, but will be pleased to keep up with his many friends at Box 894, APD New York 09751.

On other matters, I wish you all happy hunting as the new show season begins

to dot the scene in September. If there is a show near you, make the effort to see the exhibits, patronize the dealers, and visit with your fellow collectors. Walk up to dealers' tables and ask for EFOs and items of special interest to you. Even if they don't have what you're looking for, you'll be sensitizing them to your needs. Chances are they'll make an effort to stock whatever several money-bearing potential customers ask for.

Speaking of shows, if you are coming to VAPEX in November, be sure to let me know so that we can get together. And if you meant to respond to me or Lou Repeta on my WESTPEX 89 request for help in the last issue, but forgot, we are still waiting by our mail boxes. We want EFOCC's WESTPEX 89 participation to be the best thing that EFOCC has ever done-- and we want EFOCC members to come and have a great time there.

-JMH

Contents -



McAfee: "Unpictured" EFOs on Booklet Panes	5
Gates: Those Marvellous Misperfs	8
Cibulskas: Plate Number Coil Varieties	10
Repeta: Questionnaire Responses	14

From the Editor	2
Exhibitions	3
News	6
EFO Post	6
Letters	7
Q: What Is It?	14
Secretary's Report	15
Auction Report	15
Auction	16

From the Editor's Easy(?) Chair-

When John Hotchner called to tell me of my appointment as editor of this journal, I was painting concrete blocks-- sixteen thousand pounds of concrete blocks, in the torrid Virginia sun-- to create what I was afraid would become "The Howard P. Gates, Jr. Memorial Driveway Edging," if my hyperthermia progressed any further. So I was delighted with the opportunity of editorship. Beats concrete block painting all hollow, I thought.

Now, up to my armpits in paper scraps, I have to wonder about my judgment. I thought to alter the style of the *Collector* just a little, with two-column format and larger margins, and never dreamed how many retypings, how many trips to the only available copy machine at Wilderness (VA), how much cutting and how much pasting it would take to arrive at just a few (count 'em) finished pages. Easy chair, phaugh.

So much for style. As to the substance of the publication, that's up to you-- the members. Your contributions of articles, long or short, technical or not, humorous or straight, will constitute the content of future issues. I hope to hear from you in quantity-- and quality.

ALL CONTENTS COPYRIGHT 1987 BY THE EFO COLLECTORS CLUB. Authors and contributors have express permission to reuse any of their own material elsewhere and without restriction. Except for material reprinted herein, or material individually copyrighted by the author, permission is granted for any material herein to be reprinted elsewhere as long as full credit is given, including Volume and Issue numbers and the address of the EFOCC Secretary.

The EFO Collector is published six times yearly in even-numbered months. The deadline for any issue is the 15th day of the month preceding the month of issue-- e.g., May 15 for the June issue. Send material directly to the Editor.

Subscription membership applications, together with \$10 annual dues, should be sent to the Secretary.

Advertising for *The EFO Collector* will be accepted at the following rates per insertion: full page, \$28; half page, \$15; quarter page, \$8; classified ads, 6c per word. Multiple-insertion contract rates are approximately 20% less. All advertisements and related inquiries should be directed to the Advertising Director.

EFOCC members are entitled to three, 35-word (excluding address) free "EFO POST" classified ads annually. These should be sent directly to the editor.

1986-88 EFOCC OFFICERS, AND CHAIRMEN

PRESIDENT

John M. Hotchner
P.O. Box 1125
Falls Church, VA. 22041-0125
Phone: 703-820-5449

TREASURER AND AWARDS DIRECTOR

Phillip E. Nazak, Sr.
P.O. Box 662
Binghamton, NY 13902-0622
Phone: 607-729-4783

EFOC MAILER

E. Steven Brand
P.O. Box 1058
Marathon, FL. 33050

BOARD MEMBER AT-LARGE

Stuart M. Kremsky
Suite 9-L, 1716 Ocean Ave.
San Francisco, CA. 94112

EDITOR

Howard P. Gates, Jr.
615 Lakeview Pkwy.
Box 955, Lake-of-the-Woods
Locust Grove, VA. 22508
Phone: 703-972-2084

PUBLICATIONS DIRECTOR & BOARD MEMBER

Daniel S. Pagter
P.O. Box 6394
Albany, CA. 94706-0394
Phone: 415-525-8696

Scott Shaulis
119 W. Sanner St.
Somerset, PA. 15501
Phone: 814-445-7341

Lou Novacheck
P.O. Box 894
APO New York 09751
Phone: 07954 8298

Larry S. Weiss
P.O. Box 676
New York, NY 10116
Phone: 201-762-1205

VICE PRESIDENT & BACK ISSUES DIR.

Lou Repeta
76 Biltmore Ave.
Oakdale, NY 11769
Phone: 516-567-9294

SECRETARY

CWO James E. McDevitt, USCG (Ret.)
1903 Village Rd., W.
Norwood, MA. 02062-2524
Phone: 617-769-6531

ADVERTISING DIRECTOR

Dennis Ryan 120 St. Lawrence Ave.
#213
Janesville, WI. 53545

AUCTION DIRECTOR

Joseph A. Licata
209 East 11th Ave.
Conshohocken, PA. 19428
Phone: 215-825-7385

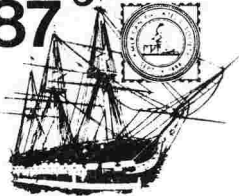
CIRCUIT DIRECTOR

Howard A. Pohl
P.O. Box 695059
Miami, FL. 33269-2059
Phone: 305-653-0866

PUBLICITY DIRECTOR

Richard H. Hunt
23 Old Orchard Lane
Trumbull, CT. 06611

EXHIBITIONS

STaMpsHOW
87

101st Annual Convention
Boston, Massachusetts-August 20-23

The 101st annual convention of the American Philatelic Society will be held in Boston August 20-23, 1987.

Boston is the ideal place in which to merge one's interests in stamps and American history. There are Old North Church, Bunker Hill Monument, the U.S.S. Constitution, the Boston Tea Party museum, and birthplaces, burial places, meeting halls and schoolhouses of presidents, statesmen and authors of note.

The literature exhibit at STaMpsHOW will be the largest in seven years, and members of EFOCC are among the exhibitors.

The Errors, Freaks and Oddities Collectors Club will meet during the convention from 4 to 5:50 p.m. Saturday, August 22, in the Beacon "D" room of the Sheraton Boston Hotel, STaMpsHOW headquarters, 39 Dalton Street. If you plan to attend and can give a short presentation on some aspect of EFO collecting, contact Jim McDevitt, 1903 Village Road, Norwood, MA 02062, or phone him at 617-769-6531.

WESTPEX 89

Yes, we're talking about San Francisco almost two years from now-- April 28-30, 1989. EFOCC is committed to be THE participating society. Participation requires planning and commitment by our club. A planning committee is being established, chaired by Vice President Lou Repeta, and needs volunteers, preferably (but not necessarily) Californians.

But just as important is individual commitment to a number of activities pertinent to club participation: Arranging displays for, setting up, and manning an EFOCC table at the show; its

VAPEX



The Virginia Philatelic Exhibition will be held November 20-22, 1987 in the Pavilion, the Virginia Beach Convention Center at 1000 19th Street. There will be 350 frames of competitive exhibits, including EFO exhibits; 30 dealers from all parts of the country; a 900-lot auction Friday night; and conventions of the American First Day Cover Society and Vatican Philatelic Society.

The Eastern Regional Meeting of EFOCC will be held during VAPEX. There will be a Dutch treat breakfast at 8:30 a.m. Saturday, November 21. And Frank Pogue will make a presentation on postal stationery EFOs. John Hotchner and other officers and chairmen of EFOCC will be looking forward to seeing you there.

It's not just stamps and socializing that are attractive at VAPEX-- it's close to Williamsburg and Jamestown, and there's all that great seafood in Virginia Beach and Norfolk. Make your reservations at the Pavilion Tower Hotel, Virginia Beach, a stone's throw from the Convention Center, and ask for the special VAPEX rates.

purpose is information, recruiting and sales. Creating a cachet and cancel, using EFOs as a theme, for WESTPEX 89. Filling 80 frames with EFO-oriented exhibits. Arranging an EFOCC membership meeting. Recruiting and scheduling three to five EFO-oriented speakers. Arranging a Court of Honor display of EFO rarities.

Your commitment is needed now to get ready for April 1989. Call or write President John M. Hotchner, P.O. Box 1125, Falls Church, VA 22041-0125, telephone 703-820-5449.

WORLDWIDE STAMPS & POSTAL HISTORY

Schiff Auctions

"Especially for Specialists (R)"



If you do not get our catalogs you are missing out! Send \$8.50 (\$12.50 overseas) for a year's subscription to catalogs and prices realized or send \$1.00 (\$1.50 with prices realized) for our next auction.

Catalogs picked up at our office are complimentary.

WHAT IS A SCHIFF "ESPECIALLY FOR SPECIALISTS®" AUCTION?

It's an auction designed with YOU in mind, whether you are a buyer or a seller of U.S. or Worldwide stamps.

FUTURE AUCTION DATES
U.S. & Worldwide Stamp Auction No. 186
 October 22-29, 1987
 Official Auction — ASDA
 Madison Square Garden
 New York City, NY

Auction No. 185
August 27-28, 1987
 (Consignments now being accepted for our future auctions.)

WE INVITE YOU TO CONSIGN individual stamps, covers or collections for Public Auction or Private Treaty Sale.

WE ALSO PURCHASE OUTRIGHT! Contact us first, describing your material. Include your address and phone numbers.

Jacques C. Schiff, Jr., inc.

195 MAIN ST.
 RIDGEFIELD PARK, NJ 07660

Licensed & Bonded Auctioneers
 Established 1947

TELEPHONE: 201-641-5566, From NYC: 662-2777

A BROCHURE DETAILING OUR SERVICES SENT UPON RECEIPT OF A STAMPED SELF-ADDRESSED LEGAL SIZE ENVELOPE.

• ESPECIALLY FOR SPECIALISTS

• ESPECIALLY FOR SPECIALISTS

Earl McAfee:

"UNPICTURED" EFOs ON BOOKLET PANES

Cloudy French's Encyclopedia of U.S. Plate Varieties is the basic reference that tells us what to look for in U.S. plate varieties, including those on booklet panes. The problem is that we are looking for one item out of the vast quantities available for each issue covered.

However, the search is simplified on one style of the flat printed booklet panes. Where Cloudy lists a variety on a "D pane" (which is the position on flat printed issues having the plate number on the tab over stamp 2), all we have to do is look for that particular plate number.

Shown in figure 1, unpictured in his book, is Cloudy's "#499 - D Pane 10220 with a twisted reentry." Stamp 2 is skewed in relation to the other stamps in the pane. This writer obtained the variety at a bourse by reference to the plate number. What I've done is xerox the pages of the Encyclopedia that pertain to booklet panes, and use them as check lists when looking at stocks of panes.

Figure 2, submitted by John Hotchner, is also a plate variety. This issue seemed to have more than its share of poorly erased layout marks, curiously many of them occurring on the bottom pane of the two in the booklet. Note that these lines are very light. For purposes of illustration they have been strengthened in our picture. John's pane is the bottom pane from under a plate #4.

Figure 3 is from a pane sent us by Mike Perry. Few booklet collectors research and understand U.S. panes better than Mike, so we have given his explanation of the pane. He calls it a miscut showing EE marks previously unreported on the Seashells issue. Similar, but not the same, marks have appeared on other Goebel's assembled booklets. However, these marks are wider than the other issues, where the marks were relatively common. In the pictured example the booklet tab appears to have been cut about 1mm "higher" than normal, thus exposing the bottom ends of the EE marks. Mike got his example from Gene Paquette's price list, and, so far, Gene's limited stock of these have been the only reported examples on the SeaShells issues. Mike goes on to say that he thinks Bruce Mosher will be writing a detailed study of the Seashells issue for the "U.S. Specialist", so watch for Bruce's article and an explanation of what these marks are.

What do you have on previously "unpictured" EFO booklet panes? Let's get them pictured in our journal!

Box 3266, Champaign, IL 61821



FIGURE 1. Plate Variety, Scott #499e.



FIGURE 2.
Plate Variety,

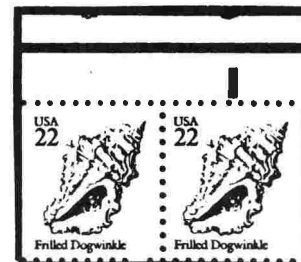
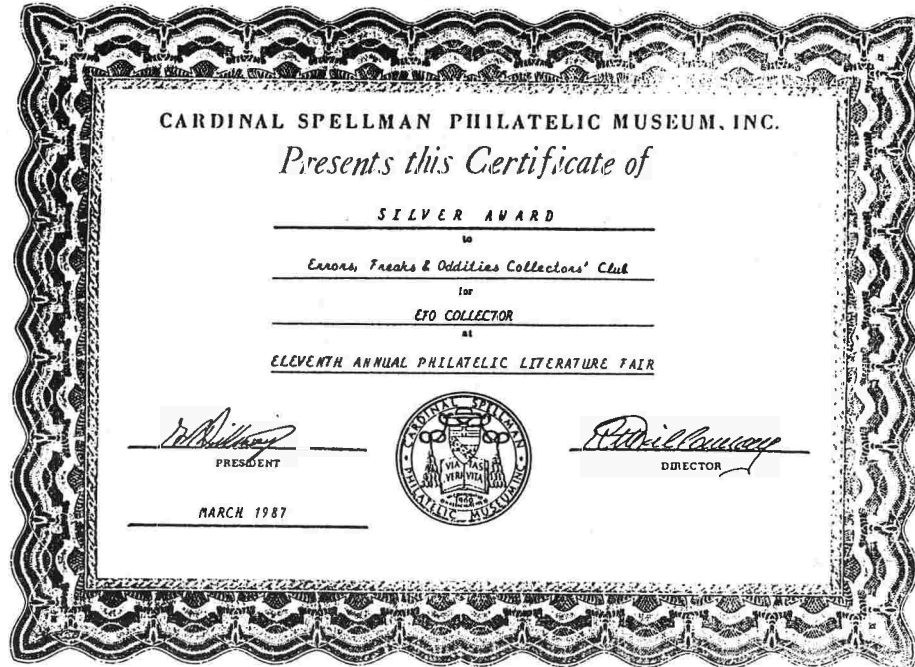


FIGURE 3. Previously unreported EE Bars at Top of Tab.

NEWS—

THE ERRORS, FREAKS AND ODDITIES CLUB received a Silver Award for EFO Collector at the Eleventh Annual Philatelic Literature Fair held by the Cardinal Spellman Philatelic Museum, Inc. Congratulations to Lou Novacheck, Dan Pagter, John Hotchner and the contributors who made this award possible.



STEPHEN R. DATZ is in the process of revising his fine catalog, U.S. Errors. Expect the 1988 edition within months.

=====

EFO POST—

WANTED: EFO exhibitors for Filatelic Fiesta 88 at the St. Claire Hilton, San Jose, CA, Feb. 19-21, 1988. Prospectus from Michael Holly, 360 N. 17th St., San Jose, CA 95112-1848

WANTED: EFOs on U.S. 1834-1837, 1952, U569. Also any foreign EFOs on stamps or postal stationery which feature tennis or masks. Dorothy E. Weihrauch, 9 Island Ave., Apt. 906, Miami Beach, FL 33139.

WANTED: All coils with plate numbers on top. Will trade others-- PNCs or EFOs. Alan Rosenberg, P.O. Box 2502, Syracuse, NY 13220-2502.

WHILE THEY LAST: Any member involved with children's stamp groups: I'll send you 100+ Scott 231 for 22c SASE. Earl McAfee, Box 3266 Champaign, IL 61821.

PLATE BLOCKS: \$100 face in 3c to 10c comm. plate blocks for \$120. First come, first served. I'll pay postage to send to you. John Hotchner, P.O. Box 1125, Falls Church, VA 22041-0125.

U.S. SHEETS (with plate blocks): \$100 face in 3c to 13c sheets for \$95. I'll pay postage to send to you. John Hotchner, P.O. Box 1125, Falls Church, VA 22041-0125.

WANTED: Mexican EFO's. Civia Tuteur, 7327 N. Osceola, Chicago, IL 60648.

FOR SALE: 27 minor EFOs. Over \$9 face value for \$14. Send SASE for complete list. Scott A. Shaulis, 119 W. Sanner St., Somerset, PA 15501.

ALMOST FREE: Send \$2.79 for my 1986 catalog "Missing Inscription United States Stamps." Howard Gates, Box 955 LOW, Locust Grove, VA 22508.

TO THE EDITOR—

Christmas Philatelic Club

On page 16 of the February 1986 (Vol IX No. 4) there appears "Christmas Philatelic Club" with my byline and one glaring problem: The address of the CPC was omitted in the announcement. It is

*Christmas Philatelic Club
Vaugh H. Austin, Sec-Treas.
Box 77, Scotts Bluff, NE 69631*

Daniel S. Pagter

Cancel and Meter EFO Study Group

I am looking for members who are interested in cancelation and meter imprint EFOs for the purpose of establishing a "Study Group." These long-neglected areas are rich in material, yet low in cost, which makes them excellent for the young and underfunded collector. Member Scott Shaulis and I have written *The Tentative Guide to U.S. Machine Cancel EFOs*, which lists 30 ways a machine cancel can be an EFO; and E.J. Roscoe's *Meter Anomaly Index* has appeared in *The EFO Collector*. But there is much work to be done. There is, for example, no listing of cancelation misspelled town names or meter slogan errors. If you are interested in cancel and meter EFOs, or perhaps would like to do original research, please write.

James M. Harkleroad 030597
Box 747
Florida State Prison
Starke, FL 32091

Stamps for the Wounded

Please convey my thanks to M.S. George and Robert Mis for several nice donations to *Stamps for the Wounded*. SFTW serves sick and wounded veterans in over sixty of the Veterans Administration hospitals. Stamps are used as a proven and successful therapy.

Donations of stamps, including commemoratives and revenues, envelopes with special postmarks, FDCs, first flights, etc., will be gratefully received. Donations are tax deductible, and receipts will be furnished on request. Please send your donations to

John M. Hotchner, Box 1125
Falls Church, VA 22041-0125

Comments on our Content

Paul Estok, of Toronto, would "like to see a few more Canadian EFOs mentioned."

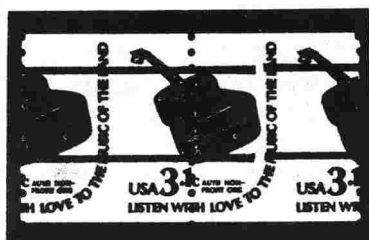
Kenneth W. Blevins of Alexandria, VA collects United Nations EFOs only, but has "never seen UN EFOs mentioned in member auctions or lists."

The Editor Responds:

I am eagerly seeking substantive articles on the EFO topic closest to your heart-- on Canadian, U.N., U.S., or any other country's errors, freaks and oddities. Send them to:

Howard Gates, Box 955 LOW
Locust Grove, VA 22508

APS



\$20.00
Scarce

BIA



\$12.50

EFOCC



\$13.50
Scarce

STAN GOLDFARB
301-279-0754
8520 Atwell Rd.
Potomac, MD.
20854

Illustrated U.S. Error price list 25¢ plus SASE

Howard Gates:

THOSE MARVELLOUS MISPERFS--

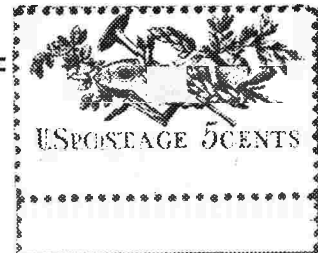
In the classification of EFOs, misperforated stamps constitute a huge family-- lower class, perhaps, than the imperforate or missing-color families that are listed in the Blue Books of Scott and Datz, but nevertheless dominant by reason of size, diversity and plenitude. And, of course, eminently collectible at reasonable cost.

How might the members of the misperf family (excluding part perforates) be classified? At the lowest, most common level-- level one, say-- are the simple perf shifts, where the perforations remain horizontal and vertical but are shifted a few millimeters from their proper positions. Then at level two there are those stamps whose perforations are angled from true horizontal or vertical. Level three contains the crazy-perfs, those nutty foldovers in which the perforations run any which way, making no sense at all. From special cases of the three lowest levels are derived the members of level four, the COD, or change-of-design misperfs, in which an inscription that should have appeared at the bottom of a stamp is found at the top, or a left-hand inscription is moved to the right.

The top level of misperfs, level five, is reserved in my mind for the sheet-margin special cases of level four: those where misperforation of a stamp has relegated an important part of the inscription-- the denomination, for example-- to an adjacent stamp or to the selvage, making the stamp into a "missing-inscription" variety.

Arriving at a comprehensive catalog of missing-inscription misperforates would undoubtedly be a monumental task, but I'm willing to try, if you'll send me your list with reproducible illustrations. Meanwhile, I'll present my limited tabulation, with illustrations:

5c American music (1964), Scott 1252.
"AMERICAN MUSIC" missing at top.



3c Francis Parkman (1967), Scott 1281.
"3c" missing at right.

10c Andrew Jackson (1967), Scott 1286.
"UNITED STATES", "10c" missing at left.



8c Eisenhower (1971), Scott 1394.
"EISENHOWER USA" missing at bottom.

6c Douglas MacArthur (1971), Scott 1424.
"DOUGLAS MacARTHUR" missing at bottom.



8c family planning (1972), Scott 1455.
"8c" missing at right.

Continued on next page

Those Marvellous Misperfs (Continued from previous page)



13c Marquis de Lafayette (1977), Scott 1716. "U.S. Bicentennial 13c" missing at bottom.

15c American owls (1978), Scott 1762 and 1763. Missing at bottom, from 1762, "BARRED OWL"; from 1763, "GREAT HORNED OWL"; from both stamps, "15c" and "WILDLIFE CONSERVATION-USA".



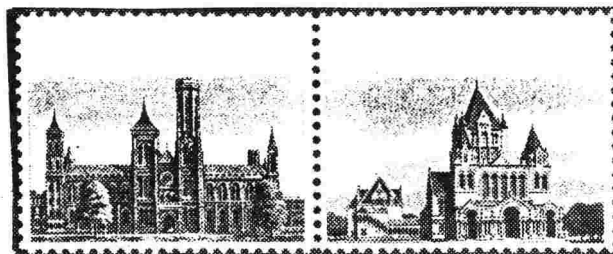
15c Madonna and Child (Christmas 1978), Scott 1768. "Christmas USA 15c" missing at bottom.

15c Dolley Madison (1980), Scott 1822. "Dolley Madison", "USA 15c" missing at left.



15c Emily Bissell (1980), Scott 1823. "Crusader Against Tuberculosis" obscured by perforations; "USA 15c" missing at bottom.

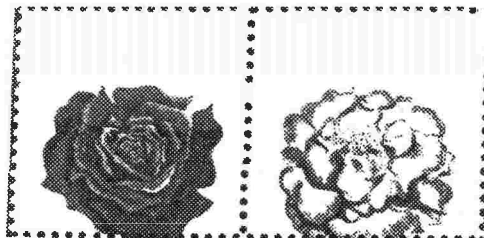
15c American Architecture (1980), Scott 1838 and 1839. Legends and "Architecture USA 15c" missing at bottom.



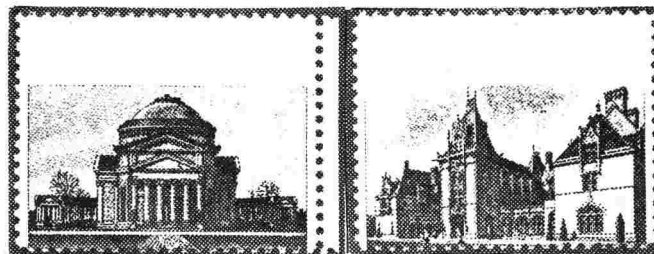
37c Robert Millikan (1982), Scott 1860. "Robert Millikan" missing from left.



18c flowers (1981), Scott 1876 and 1877. Missing at bottom, from 1876, "Rose USA 18c"; from 1877, "Camellia USA 18c".



18c American architecture (1981), Scott 1928 and 1929. Legends and "Architecture USA 18c" missing at bottom.



20c American architecture (1982), Scott 2019 and 2020. "Architecture USA 20c" missing at bottom.



A.S. Cibulskas:

PLATE NUMBER COIL VARIETIES— Introduction and Overview

Many people will agree that Plate Number Coil (PNC) philately is currently one of the most popular areas of U.S. philately. Without going into the multitude of reasons for this popularity, suffice it to say that collectors have shown renewed enthusiasm for their stamps as a result of the diversity and interest generated by today's coils.

Specialists in coils have always had their eyes out for varieties, freaks, errors, etc., but interest seems to have been somewhat limited to a relatively hardcore few. However as the momentum continues with PNCs in general, there is a concurrent interest increase in variety material. Why this has come about is open to debate. Is it people nearing the completion of their basic collections to the degree of their financial comfort but still have continued intrigue with the series in general, or increasing interest from general EFO collectors, or from a desire for the somewhat unusual by new collectors? The bottom line remains the same: interest and demand for this type material is on the move upward.

Just what is the definition of a "variety"? A dictionary would say a variety is something differing from others of the same kind. There are a sufficient number of different types of material saved in PNCs that the above is probably as suitable a definition as is generically possible. I will attempt to provide an overview of the types of varieties currently being collected. As this is still an evolving area, the following should not be considered as all-inclusive but rather a subjective subdivision of sorts.

PLATE VARIETIES. Plate varieties generally result from flaws in the printing plates, either present initially or, more usually, developed during subsequent stages of the printing process. The most common are cracks, gouges, or chips. The most widely known are plate cracks; "Buggy Whips", "Lightning Bolts", "Sleigh Whips", etc. have been widely publicized in the philatelic press. An example is shown schematically in Figure 1. They generally occur at or near the joint line due to the nature of the printing process, i.e., plate stress and/or fatigue at the edge of the printing plate. The "Catalog of Plate Number Coils" (Third edition, Edited by Stephen G. Esrati), (reference 1) just recently published, lists and illustrates known constant plate varieties (as of date to press). The listings are summarized as table 1. The position of the variety is given by counting the perforations right or left of the joint line (real or imaginary).

MAT VARIETIES. As the term implies, examples of these varieties are limited to precancel issues with precancel mats. They generally result from underinking; areas of discernably fainter impressions or partial areas totally lacking ink. As these are generally more random and/or less defined than constant plate varieties, they seem to be a bit less desirable though still a collectable and popular.

CHILL ROLLER OFFSETS. Partial image doubling to various degrees is known on certain coils. Originally misdefined as double transfers, the causes have been fully defined and presented in detail in an article by Ken Lawrence (reference 2). In brief, some stamps show doubling of design parts or letters/numerals of the inscription. An example is depicted schematically in figure 2.

IMPERFORATES. This term is self-explanatory and needs no additional elaboration. Known examples are listed in the current catalogue.

Plate Number Coil Varieties- Introduction and Overview

(Continued from the preceding page)

MISPERFORATIONS. Again, essentially self-explanatory. The design is off center with respect to the perforations. Examples of these are considered more freaks rather than varieties by most. Though certainly desirable and collectable, they are not listed in the current catalogue. They are known to some degree on most coils.

MISCUTS. This term applies to material resulting from a faulty alignment of paper feed during the cutting operation. The result is an abnormal design positioning along the horizontal axis. By far the most common is a downward design shift resulting in split plate numbers (part of the number is at the bottom and part of the number is at the top) or plate numbers whole and entire at the top of the stamp. Historically, most collectors/dealers initially rejected such material as undesirable, unacceptable, and non-collectable, and as such, relegated such items to the postage pot.

Over time, these have become a desirable addition to the collection. Most sought are miscuts sufficiently drastic to show the entire plate number at the top or no number at all on a stamp to the left of the joint line. Known examples of the latter varieties are tabulated in Table 2 (updated version of the table prepared by this author and published in the current catalog).

MISCELLANEOUS. A catch-all term which can be applied to remaining material. Examples include (but are no means limited to) ink smears, doctor-blade lines (also called telephone wires or clotheslines), various color misregistrations (red/blue/black color bleeds, which are relatively common on the Flag issues), partial design missing (resulting from foreign matter on the printing surface), random ink blobs, etc., etc.

In addition to providing insights on the subject another purpose in writing this overview is to generate an exchange of information. All correspondence whether reports, questions, suggestions for additional, perhaps more indepth, columns, gripes, or whatever will be answered.

References 1: Available at \$12.50 postpaid from Stephen Esrati, P.O. Box 20130, Shaker Heights, OH. 44120.

2: Lawrence, K. The United States Specialist, 57 #1, January 1986, Page 6

Locomotive

Locomotive

FIGURE 1 - Example of "Smoking T" plate crack on 2¢ Locomotive. Normal at left, crack at right.

Stagecoach 1890s
USA 4c

Stagecoach 1890s
U.S.A 4c

FIGURE 2 - Example of chill roller offset doubling effect on 4¢ Stage Coach.

Continued on the next page

Plate Number Coil Varieties- Introduction and Overview
(Continued from the preceding page)

TABLE 1
RECENT COIL PVs AND OFFSETS

DENOM. AND PLATE #	VARIETY DESCRIPTION & PLATE POSITION	DENOM. AND PLATE #	VARIETY DESCRIPTION & PLATE POSITION
<u>1c BUS</u>		<u>9.3c WAG.</u>	
- Plate 1	Chill roller offset (Var.)	- Plate 3	Smoking G (1L)
- Plate 2	Chill roller offset (Var.)	- Plate 5	Hash mark (6R OF GAP)
- Plate 3	Plate crack (2L)	- Plate 6	Hash mark (6R OF GAP)
	Rocks in road (8R)	<u>10.1c WAG</u>	
- Plate 4	Chipped plate (1L)	- Plate 1	Artillery shell I (3R)
- Plate 6	Plate crack (1R)		Artillery shell II (12L)
<u>2c LOCO</u>			Artillery shell III
- Plate 3	Chill roller offset (Var.)		Flying hyphen (1R)
	Smoking T (1L)		Bursting shell (29R)
	Tail on T (1L)		Dot over Lin oil (4R)
- Plate 4	Chill roller offset (Var.)		Dot over I in oil
<u>3.4c BUS</u>		<u>10.9c CAB</u>	
- Plate 1	Chill roller offset (Var.)	- Plate 2	Wheel to line crack (1L)
- Plate 2	Chill roller offset (Var.)		H to U line crack (1R)
<u>4c BUS</u>			Seat to S crack (1L)
- Plate 1	Chill roller offset (Var.)	<u>11c CAB.</u>	
- Plate 2	Chill roller offset (Var.)	- Plate 1	Brake shoe (17L)
	Quotation marks		Hoseline I (30L)
<u>4.9c B'BD</u>			Hoseline II (8L)
- Plate 4	Buggy Whip (1L)		Sitting duck (9R)
- Plate 5	Rain check I (1L)	<u>11c STUTZ</u>	
	Rain check II (1L)	- Plate 3	Polishing cloth (1L)
<u>5.2c SLGH</u>		<u>14c BOAT</u>	
- Plate 2	Sleigh Whip (1L)	- Plate 3	Chill roller offset (Var.)
	Flying Hyphen (4R)	- Plate 4	Chill roller offset (Var.)
- Plate 4	Hash Mark (6R OF GAP)	- Plate B-PRS.	Chill roller offset (Var.)
- Plate 6	Hash Mark (6R OF GAP)	<u>17c AUTO</u>	
<u>5.5c TRK</u>		- Plate 5	Ink blob (1R)
- Plate 1	Burned rubber (2R)		Oil drop (1R)
<u>6c TRIKE</u>		<u>18c SURR.</u>	
- Plate 1	Blobs (1R)	- Plate 2	Lightning bolt (1L)
- Plate 2	Cat scratch (7R)	- Plate 9	Lightning bolt (1L)
<u>7.4c BUG.</u>		- Plate 10	Lightning bolt (1L)
- Plate 2	Blown tire(?)	<u>20c PUMP.</u>	
<u>8.3c AMB.</u>		- Plate 2	Plate crack (1L)
- Plate 1	Low number (1L)	- Plate 15	Chill roller offset (Var.)
	No number (1L)		Wounded P (1L)
	Double number (1L)	- Plate 16	Chill roller offset (Var.)
<u>8.5c TRK.</u>		<u>20c FLAG</u>	
- Plate 1	Dot under T	- Plate 2	Chill roller offset (Var.)
		- Plate 5	Slate blue
		- Plate 8	Brick red
			Slate blue
		- Plate 14	Q Line
		<u>22c FLAG</u>	
		- Plate 4	Slate blue
		- Plate 6	Flying saucer (2R)

Continued on the next page

Plate Number Coil Varieties- Introduction and Overview
(Continued from the preceding page)

MASTER LIST OF COILS WITH PLATE NUMBER AT TOP

Value	Plate number													No#
	1	2	3	4	5	6	7	8	9	10	11	12	13	
1.0	x	x	x	x	x	x								
2.0			x	x				x		x				
3.0		(x)												
3.4		x												
4.0	x	x		x										
4.9			x	x										
5.0	x	x												
5.2	x	x	x		x									
5.5	x													
5.9														
6.0														
7.4		x												
8.3	x													
9.3					x	x								
10.1														
10.9														
11.0	x		(Caboose)											
11.0	x	x	(Stutz Bearcat)											
12.0	x	x												
12.5														
14.0	x	x	x	x										
17.0	x	x	x	x	x	x	x							
18.0		x				x							(x)	
20.0		x			x									
18.0				(Flag)										
20.0				(Flag)										
22.0		(x)	x	(Flag)							x			
"D"														
20.0			(Consumer)											
PRECANCELS														
3.4														
4.0														
4.9	x	x	x	x										
5.0	x		x											
5.9			x	x	x	x								
6.0														
7.4		x												
8.3	x	x												
9.3				x										
10.1														
10.9	x	x	x	x										
11.0	x		(Caboose)											
12.0	x	x												
12.5														
17.0			x	x	x	x	x	Type A						
17.0			x		x	x		Type B						
17.0	x	x	x					Type C						
20.0				(Flag)										
18.0	(Washington)			11121	appears	on	top							

(x) To date, known only on used copies

Louis E. Repeta:
**QUESTIONNAIRE
 RESPONSES—**

The Board and I thank all those who responded to the survey questionnaire in the August 1986 issue of *The EFO Collector*. They and the Board have received a detailed summary of the results.

I shall briefly summarize the survey results for the remainder of the membership. I hope the sample responses truly reflect the views of the Club. I will be pleased to send you a photocopy of the worksheet in exchange for a stamped, self-addressed business envelope.

Eighty percent of the respondents would like to see more Questions and Answers. Sixty percent would appreciate more columns devoted to member experiences and devoted to collection presentation and exhibits of EFOs. An increase in the use of illustrations to support the text would be appreciated. Columns and articles dealing with counterfeits and forgeries were requested. In all other areas, the responses indicated that the current coverage in *The EFO Collector* varied from adequate to more than adequate.

We need to have your questions to answer. The respondents indicated that they would like to read about your experiences in collecting, buying and selling EFOs. We would like you to share with us your favorite EFO or a page from your collection.

Let us pledge to set aside an evening a month to pen our contributions. Active participation is a measure of our Club's vitality. *The EFO Collector* is the outward sign of the Club's strength, and member involvement contributes toward its growth and longevity. Increase in the content of *The EFO Collector* is directly dependent upon your participation. Let's all get involved.

MISMATCHED PLATE AND
 INKING-IN ROLLER VARIETY



Of course you can't see it in black and white, but the right two rows of stars is red on these stamps - and the right portion of the stripes is tinged with blue.

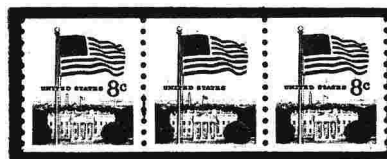
A very limited quantity found by a non-member in Oregon. Special for EFOCC members only. Don't delay!

Pair \$12.50 Strip of 4 \$22.50 of 5 \$25.00
 One plate number (12) coil strip of 5 \$45.00

Order from John M. Hotchner
 P.O. Box 1125
 Falls Church, VA.
 22041-0125

Q: What is it?

This is a coil strip of three 8c Flag Over the White House, Scott 13386. The red "8c" is missing on the center stamp. It's not unique-- similar strips appear at auction every so often. So is it a freak? A major error? Or just an oddity? Respond to Howard Gates, Box 955 LOW, Locust Grove, VA 22508. The best answers will be published in a future issue of *The EFO Collector*.



Secretary's Report-

Auction Report-

WELCOME to--

Life Members: LM-11, Ms. Betty Jung,
Vicksburg, MS; LM-12, Mr. Clinton
Baker, Chatham, IN;

Contributing Members: #557, Norman
Berman, Michigan City, IN; #193, Dr.
Jim Benedict, San Pedro, CA; #493,
Nathan Reeder, Dallas, TX;

Sustaining Members: #15, Irv. Cohen,
Sunrise, FL; #162, Col. Romeo Routhier,
Guatemala; #201, Don Trigg, Aurora, CO;
#189, Phil Beutel, Colorado Springs,
CO; #565, Jim Hall, Urbana, OH; #507,
M.R. Treister, Chicago, IL; #151, Dick
Hunt, Trumbull, CO; #395, Bob Sutton,
Los Angeles, CA;

New Members: #598, Edward W. Murphy,
Coventry, RI; #599, Scott R. McCaffrey,
Reston VA; #600, James T. Balswin,
Milton, PA; #601, Ms. Marina Reile,
Albert, KS.

SINCERE THANKS to--

#372, Ed Robinson, San Francisco, CA;
#54, John Herczeg, Las Vegas, NV; Dr.
Mary McIndoo, Columbia, SC; for their
donations and contributions;

#6, Pip Wilcox, Lancaster, PA, for his
recruitment efforts;

--and to all for paying their dues in
timely fashion. The membership at June
30 numbered 344.

COMMENTS and REQUESTS sent to me have
been forwarded to the appropriate
officers and chairmen.

AUCTION CLOSING: If delays in
production or mailing result in your
receiving *The EFO Collector* after
the auction closing date, submit your
bids anyway. The closing date will be
extended.

--Jim McDevitt

Analysis of Auction #30:

Total number of lots.....	245
Number of lots sold.....	155
Number of bidders.....	40
Successful bidders.....	39
Most popular lots..	42A,48A,76
Winning lots determined by earliest postmark.....	8

If *The EFO Collector* is delivered
after the stated auction date, I will
extend the closing date so as to give
you plenty of time to bid. Even then, I
will wait for five days of no bids
before closing.

Most auction lots are accompanied by a
"minimum bid." Bids below this amount
will not be considered. Some lots have
an "estimated value", which could be
based on what the item sold for in a
previous auction. The consignor usually
sets a reserve minimum bid at 45% to
60% of the estimated value. Some lots
have both a minimum bid and an
estimated or "catalog" value, which are
provided for your information. What is
important is that lots having a minimum
bid are sold to the highest bidder at
one increment over the second highest
bid. Thus many of you have won your bid
items at hammer prices substantially
below your actual bids. If a lot really
interests you, but you think its
popularity may push bids out of sight,
consider just making the minimum bid.
In Auction #30, nearly one-third of the
lots sold to just one bid.

Sometimes it is not possible to provide
illustrations of lots that are too
large, delicate, or difficult to work
in. In this issue, I have listed at the
end of the lot descriptions those lots
that are not illustrated or are only
partially illustrated.

If you have suggestions regarding the
auction, drop me a note with your bids;
I will consider all recommendations.
Remember to get your bids in early--
and good luck in the auction!

--Joe Licata

Auction #32
August 1987

UNITED STATES

A. PERFORATIONS

LOT# SCOTT

LOT#	SCOTT	MIN	BID
1	406		
2	498	8	
3	629	10	
4	804-7	10	
5	805	7.50	
6	805	4	
7	805	7.50	
8	807	7	
9	820/25	15	
10	899	17.50	
11	900	10	
12	901	13	
13	901	7.50	
14	905	9	
15	mix	50	
16	mix	10	
17	1008	15	
18	1024	18	
19	1033	15	
20	1133	15	
21	1148	10	
22	1078	5	
23	1158	5	
24	1174	22	
25	1282	30	
26	1282	14	
27	1283B/89	40	
28	1286A	7.50	
29	1305E	20	
30	1338F	20	
31	1338GH	15	

32	1345-54		
33	1371		
34	1375		
35	1394		
36	mix		
37	mix		
38	1471		
39	mix		
40	mix		
41	mix		
42	1549		
43	1576		
44	1582		
45	1595c		
46	1608		
47	1608		
48	1610		
49	1615Cf		
50	1683		
51	1704		
52	1716		
53	1725		
54	1726		
55	1731		
56	1732-3		
57	1735		
58	1735		
59	1735		
60	1735		
61	1804		
62	1818		
63	1833		
64	1838-41		
65	1848		
66	1863		
67	1867		
68	1869		
69	1869		
70	1874		
71	1884		
72	1895		
73	1900		
74	1901		
75	1919a		

NICE MNH strip/20 with vert./diagonal perf shift. 25
 MNH plate block with vert. perf shift 2+mm left. (some traces of black mount on gum). 25
 MNH pair with brown and green color shifted right into perforations. 10
 MNH margin block/4 with 9mm horz. perf shift. 12.50
 MNH ME block/6 with 9mm horz. perf shift. 30
 MNH 1390a & 1413a se-tenant blocks/4 with gutter snipes. 5
 Three (3) used Christmas issues with different heights of 37 1/2, 41, & 42mm. (Published article inclosed) 2.50
 Three (3) EFO's on cover; 1484 gold border shift, 1433 misperf and C72 overinked. NP 7.50
 Thirty (30) used assorted EFO's. Retail \$45+. 20
 Twenty (20) used assorted EFO's. Retail \$35+. 15
 MNH LL corner block/4 with 2-way misperf. (5 x 4mm). 30
 MNH single with 2-way misperf. (7 x 3mm). 15
 MNH plate block/4 misperfed with plate #38287 and part of EE bars inside of stamp. 40
 Two (2) MNH panes with 2mm perf shift up and 3mm down. 16
 MNH pair with blind perfs between. 14
 MNH single with misperf thru "50c". (sl. gum dist.) 5
 MNH margin block/4 with vert. perf shift splitting "1" off "1.00". 15
 MNH major precancel error horz. gap strip/4. Cat. 35 16
 MNH margin single with 4mm horz. perf shift. 7.50
 MNH strip/20. Horz. perfs shifted thru and above "US BICENTENNIAL 13c". Top EE bars inside stamp. shift thru Lafayette's collar. 45
 MNH plate block/4 with SPECTACULAR diagonal perf shift thru Lafayette's collar. 100
 MNH zip block/4 with horz. perfs shifted down 8mm. 8
 MNH single with 6mm vert. perf shift. 40
 MNH zip block/4 with horz. perfs shifted down 8mm. (slight gum disturbances). 10
 Mint full sheet with diagonal misperf 4-8mm from right to left and thru plate #38388. 275
 MNH single with 6mm horz. perf shift. 3.50
 MNH zip block/4 with 2-4mm diagonal perf shift. 12.50
 MNH strip/20 with IMPRESSIVE 16mm drop in horz. perfs. to 8mm. 60
 MNH strip/16 with diagonal/horz. perf shift 3 1/2 to 8mm. 20
 MNH single with 5mm perf shift right. 5
 MNH zip block/6 with vert. perfs thru center of stamps. "Use Zip Code" completely inside stamp with part of EE bars. 45
 MNH single with 4mm horz. perf shift. 6
 MNH se-tenant block/4 with 2-way misperf. (3 x 3mm). 45
 MNH single having 10mm horz. perf shift. 8
 MNH single with blind perfs. Appears imperf between. 14
 MNH margin with vert. perfs shifted 5mm left. 6
 MNH margin block/4 with horz. perfs shifted down 7mm. 25
 SAME; in corner block/4. 20
 MNH margin single with vert. perfs shifted 6mm right. 8
 MNH single with horz. perfs shifted down 6+mm. 6
 MNH coil strip/8 with 50% misperf. 12.50
 Two (2) MNH transportation coil strips/3 (pl #1 & #2) with minor perf shifts. 6
 MNH transportation coil pair with perf shift 5mm right. 7.50
 MNH margin block/8 with vert. perfs shifted right 4mm. 18

76	1931a	MNH se-tenant block/4 with horz. perfs up causing "Architecture USA 18c" to be on top of stamps.	14	112	1468	MNH block/4 with plate #'s. 1mm misregistration of red color and 2 1/2 mm horz. perf shift.	128
77	mix	Eight (8) imperfs, misperfs and inking disorders--some with minor faults.	12	113	1480-3	MNH margin block/4 with red and grey colors shifted up 1 1/2mm.	7.50
78	2015	MNH margin block/4 with horz. perfs shifted down 6mm causing design change.	25	114	mix	Six (6) singles; 1041, 1384, 1414, 1471, 1529, and 1800 with various color shifts.	15
79	2036	MNH margin single with horz. perfs shifted 5mm up.	5	115	1592	MNH block/6 with 2-way intaglio color shift 3mm right and 1 1/2mm up.	40
80	2038	MNH single with vert. perfs shifted 4+mm right.	5	116	1542	MNH ME Block/6 with green shifted to left -- can see 1mm white voids in several places.	9
81	2041	MNH pair with horz. perfs shifted 7+mm up.	18	117	1555	MNH single with brown litho shifted up 2mm and left 3mm.	25
82	2048-51	MNH Olympics '84 mint full sheet with 1-4mm horz./diag. misperf.	20	118	1556	MNH margin block/4 with black shifted 2mm right.	20
83	2066	MNH strip/10 with horz./diag. perfs shifted 8+mm.	25	119	1757	MNH Souvenir Sheet with UL plate #38621 -- intaglio black shifted down.	22
84	2072	MNH LOVE single with vert. perfs shifted 6mm right.	10	120	1759	MNH strange looking single with colors shifted.	30
85	2072	MNH LOVE block/9 having vert./diag. perfs shifted 7mm.	4	121	1736a	MNH STRIKING margin block/4 with black shifted left 2 1/2mm.	18
86	2073	MNH single with vert. perfs shifted 8-10mm.	9	122	1824	MNH UNUSUAL single having engraving shifted down 6mm.	40
87	2073	MNH block/4 with margin perfs shifted upward 4mm resulting in design change.	25	123	1894	Mint full sheet of 100 20c Flags plus 3 1/2mm of another row at bottom.	22
88	2073	MNH Mint partial sheet of 30 with plate # and 5mm horz./diag. misperf.	7	124	1942-5	MNH Zip block/4 with colors shifted up 1 1/2mm.	40
89	2081	MNH single with vert. perfs shifted 5mm left.	7	125	2209a	Mint complete booklet--both panes show yellow shift to right 1mm and soft doctor blade streaks across the margin.	10
90	2092	MNH plate block/4 with margin perfs shifted right & thru plate #22.	7.50	126	C11	Two (2) MNH singles; one with vignette shifted up 1+mm, left 1mm; other up 1+mm, right 1mm. Est. 20	20
91	2098-01	MNH STUNNING misperf Zip block with horz./diag. perf shift and gutter at top.	100	127	C11	Three (3) right margin singles with various vignette shifts from 1/2 to 1 3/4mm. Est. 50	20
92	2104	MNH single misperfed vertically 10-15mm.	18	128	C11	Two (2) matching top margin singles; one with vignette down 1 1/2+mm, left 1/2mm; other up 2mm. Est. 30	22
93	2109	MNH strip/3 with 3mm horz. perf shift down.	14	129	C11	Four (4) position RL singles each with regular arrows and each with a shift ranging from 1mm up, 1 1/2mm down, and right 1 1/2mm putting vignette into frame (UDRL). Est. 36	30
94	2112	MNH "D" single with 5mm vert. perf shift.	2.50	130	C11	Top MNH F plate block/6 (Red T) 3/4mm right. (most difficult direction). Est. 75	18
95	2112	MNH "D" strip/5 with 2mm perf shift.	3	131	C11	Top MNH VF double F plate block/6 with blue vignette down 1mm into "cents" at bottom. Est. 100	40
96	2149	MNH precancelled coil pair with perf shift 10mm left.	10	132	C11	Top MNH F plate block/6 (Red) with vignette up 1 1/2mm into and touching frame. Est. 100	22
97	2172	MNH single with horz. perf shift up 7mm.	6	133	C11	MNH AF top plate block/10 with interesting progressive diagonal shift. Left pair 1 1/2mm up, 1 1/4mm right. Right pair 2 1/2mm up, 1 3/4mm right. Note: blue shift up runs "Top F" off margin. VERY NICE PIECE. Est. 180	10
98	2240-3	MNH margin se-tenant block/4 with design change caused by 4mm high perf shift.	25	134	J96	MNH plate block/4 with "8 cents" shifted up into frame. Est. 25	25
99	2240-3	MNH CR and Zip block/6 with horz. perfs diagonal thru the "Polk Art USA 22".	25	135	J100	Used margin block/4 with "1 dollar" shifted 3mm right. Est. 5	5
100	C27	MNH margin block/4 with vert. margin row of perfs 2mm left.	15	136	J100	MNH block/4 with "1 dollar" shifted right and just into UR frame. Est. 10	10
101	C81-88	Three (3) Nice MNH singles; C81, C87, and C88 with misperfs and color shifts.	20	137	J100	Used block/12 on postage due bill. Value shifted to left and into frame. "D" of Dollar all the way into the perforations. NP	30
102	C104a	MNH se-tenant plate block/4 with vert. perfs shifted to wrong side of value and thru plate #227--NICE.	60				
103	E19	MNH margin single with horz. perfs shifted down 3+mm.	6				
104	R136	NICE used VF single with freak vertical and diagonal perfs.	20				

B. COLOR SHIFTS

105	702	Stamp on cover w/ red shifted left & into frame. NP	7.50				
106	1041	MNH margin block/4 with STARTLING misregistered blue color 1 1/2mm right causing white torch flame.	36				
107	1075	MNH Souvenir Sheet with 3c purple shifted up 1mm. NP	7.50				
108	1096	Two (2) singles with blue and red ribbon close together and far apart; part of red torch missing on the margin single.	10				
109	1384	MNH single with inverted "Memphis, TN" precancel.	9				
110	1152-54	Four (4) singles and one plate block/4 with color shifts.	5				
111	1164-7	MNH margin block/4 with 2mm shift up of black lettering and shading.	25				

C. INKING

- 138 721 Used Ave single "small box" variety found only on 1932 Washington coil. Roughly 200 of these coils have come to light. (full descriptin attached).
- 139 807 MNH margin block/4 with dry printing and 2mm vert. perf shift to the right.
- 140 807 MNH block/15 with top 2 1/2 rows having light printing.
- 141 807 MNH plate strip/20 with 2 phanton plate #'s.
- 142 815 MNH 10c prexie pl. block with heavy plate wiping smear.
- 143 905 MNH plate strip/20 with 2 phanton plate #'s. NP
- 144 905 Full mint sheet (with missing pieces of margin) 5 full rows of heavily underinked stamps. NP
- 145 956 MNH single with plate wiping smear.
- 146 1035 MNH corner block/4 with heavy wiping smear.
- 147 1039 MNH Liberty Issue block/4 with very dark wet printing.
- 148 1359 MNH single with complete gum side offset.
- 149 1387-90 MNH zip block/4 with "US 6c" on Haida Canoe heavily ghosted.
- 150 1525 MNH plate block/4 with blue lettering doubled tagging ghost.
- 151 mix MNH (1) 1596, (4) 1802, (1) 1781, (2) 1728 and (1) post card UX105----all with various ink splotches.
- 152 2024 MNH block/6 having grey horz. chatter mark lines in background.
- 153 2041 MNH single with complete gum side offset.
- 154 2059-62 MNH CR block/4 with excessive ink changing the blue and green color to different shades. (with BEP letter and normal copy).
- 155 2114 Full mint sheet with very large solvent smear in LR.
- 156 2115 Used on paper----slate blue Capitol with Washington DC cancellation.
- 157 2121a Complete booklet with part of denomination missing. Est. 19
- 158 2275 Full mint sheet with large purple smear over two vertical rows.
- 159 C11 Mint OG H FVF single with blue color smears. (with normal copy inclosed).
- 160 C11 MNH margin pair. French listed; V19618, R6 "Blue Moon" plate variety. Est. 31
- 161 C32 MNH strip/14 with progressive overinking bottom to top.
- 162 C85 MNH single with pink man.
- 163 E23 MNH VF block/4 with 60c and Red arrow having color change to marroon. Heavy wiping smear thru stamps. Unusual! (with normal bi/4 copy).
- 164 UC56-59 Two (2) UC56 Air letter sheets with 2mm dia. blue ink splotches. One (1) UC59 with black ink splotches. NP
- 165 WS7 MNH margin block/4 with very heavy wet printing. 12.50

D. TRIMMING

- 166 408 Mint VLH Schermack III vending coil strip/4 miscut 3mm.
- 167 807a MNH miscut pane with 45% UL plate #22976.
- 168 mix Nine (9) commercial covers with miscut booklet pane singles or pairs; with plate # on adjoining stamps; including several majors.
- 169 1284 Full and miscut mint sheet showing part of "Use Zip Code"

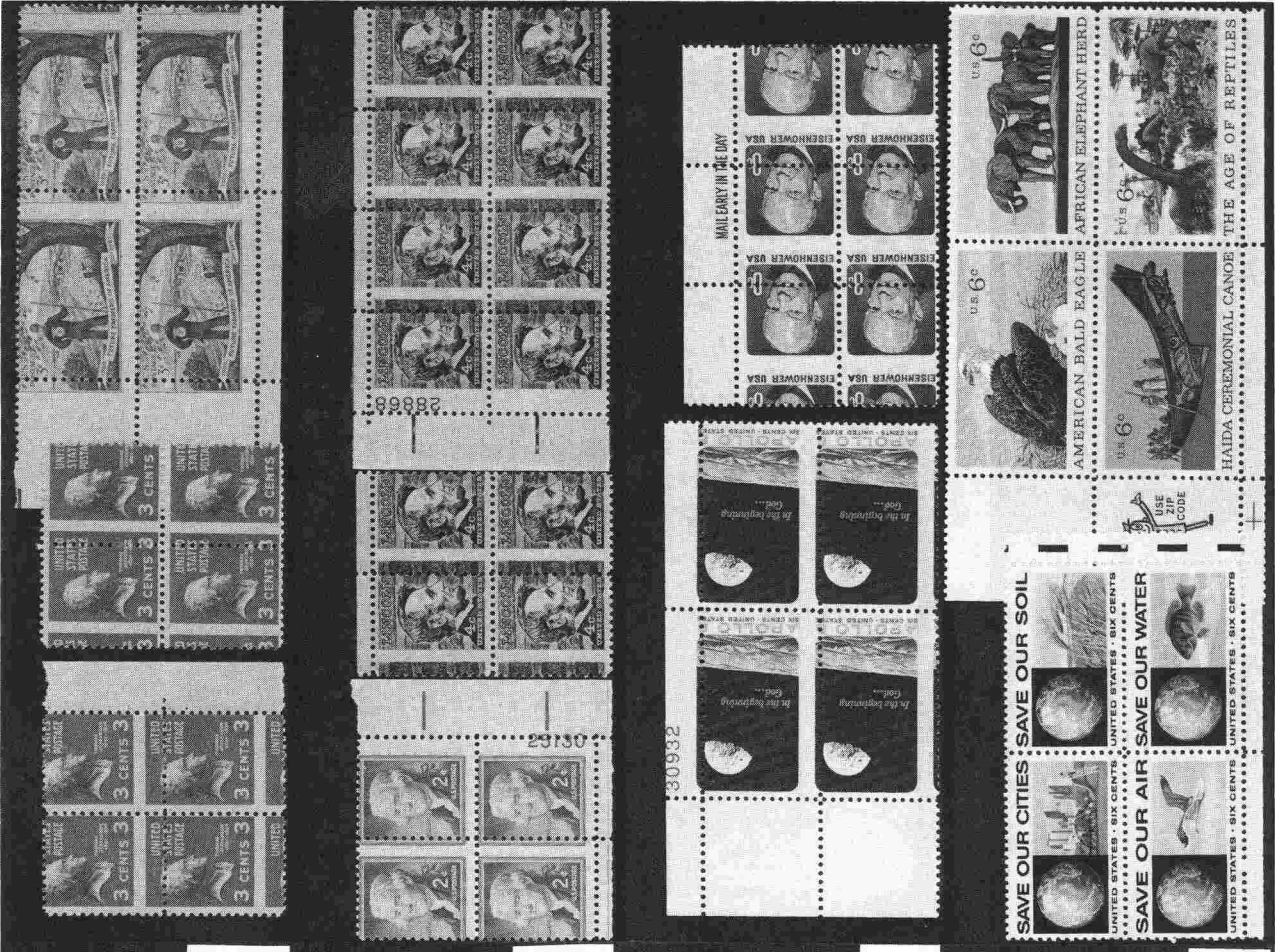
- 170 mix and two stamps from adjacent pane at right.
- 171 1897A Twenty five (25) assorted EFO's. Many mint and NH.
- 171a 1949a MNH ps-3 with split plate #8 at top and bottom. Retail \$50+
- 172 C78a Single booklet pane in booklet with experimental EE markings on plate #17 pane.
- 173 J100 MNH booklet pane miscut showing full EE bars. Cat. 25
- 174 UC50 MNH gutter snipe strip of 6 showing bottom of stamps from upper pane.
- 175 UC50 Air letter with die cutting reversed and two thin tagging bars. NP
- Two (2) Air letters with paper folds during die. NP
- cutting causing appendages. 15.

NOTE: The following auction lots do not have photos; 14, 39, 105, 107, 123, 125, 137, 143, 144, 164, 168, 174, and 175.

Only a portion of the following large lots is shown; 56, 82, 88, 155, 158, and 169.

AUCTION #30 PRICES REALIZED

LOT#	BID	LOT#	BID	LOT#	BID	LOT#	BID
2	12	38	14	74	12	124	8
3	10	39	5.50	75	28	125	40
4	4.50	40	10	76	13	126	9
6	6	42	18	77	7	127	45
7	11	42A	44	78	7.50	128	17
8	6	43	24	79	6.50	129	22
10	8	44	9.50	81	3	130	14
11	14	45	19	83	15	131	19
12	78.50	47	4.50	85	5	133	7
13	125	48A	48	86	53	134	14
14	6	49	9.50	87	7.50	135	33.50
15	13	50	32	88	20	136	42
16	38	51	5.50	89	81	138	3.50
18	20	51A	32	90	13	139	10
19	31	52	7	93	12	140	11
20	16	55	18	97	18	141	55
21	14	56	8.50	104	10	142	17
22	11	57	7	105	4	144	90
24	29	58	10	109	8	147	15
25	14	59	13	110	1.50	157	3.50
26	12	60	4.50	111	10	150	2
27	8	61	2.50	112	20	151	2
28	20	64	8	113	12	152	15
30	18	65	10	114	11	156	18.50
31	7.50	66	16	115	4.50	158	17
32	9	68	20	117	28	159	130
33	8	69	7	118	14	160	140
34	15	70	10	119	21	162	5
35	15	71	8	120	10	163	9
36	34	72	14	121	31	164	1.50
37	19	73	42	123	3	165	2

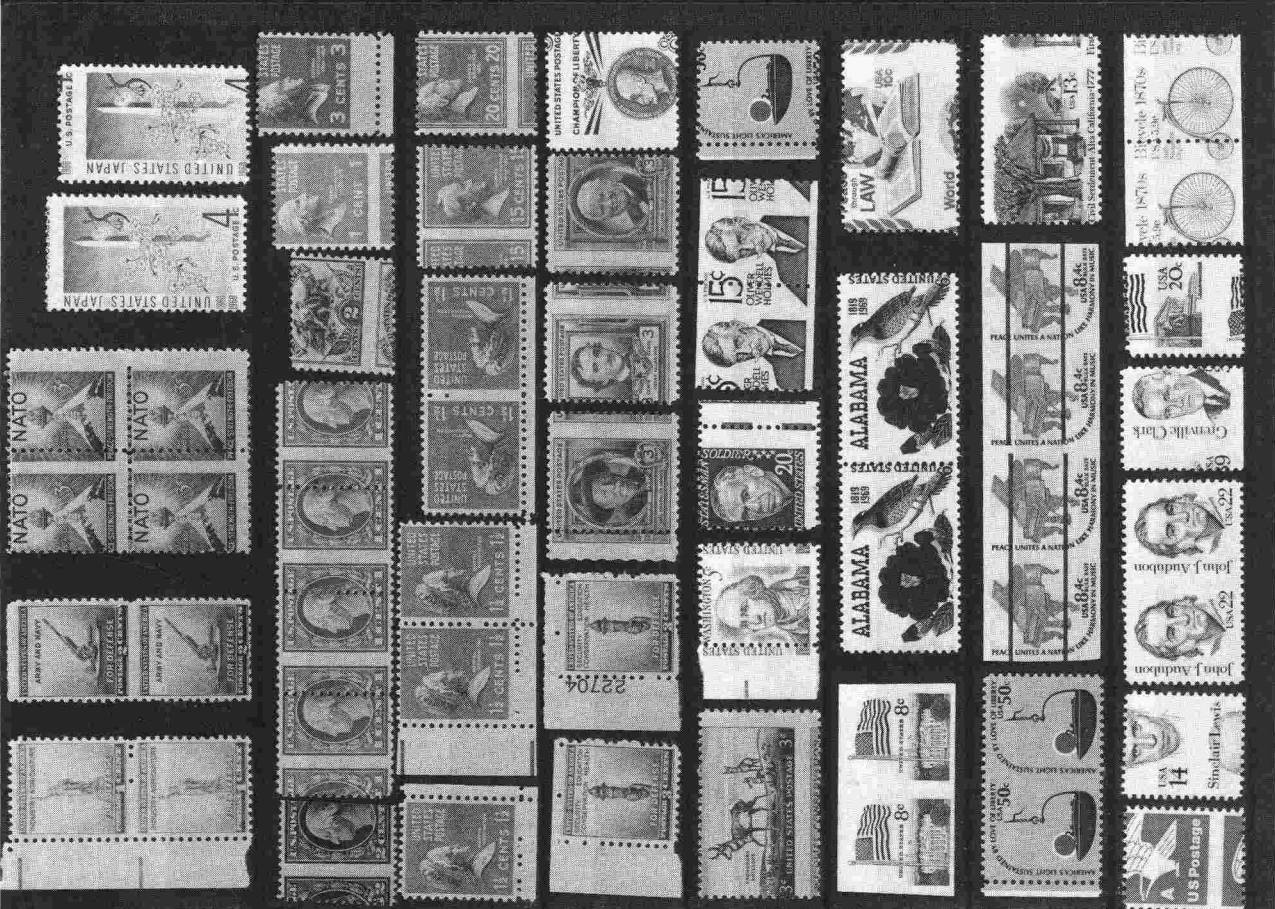


0808 18

19 26

33 36

37 37



10 17 23 23

1 3 4

5 6 9

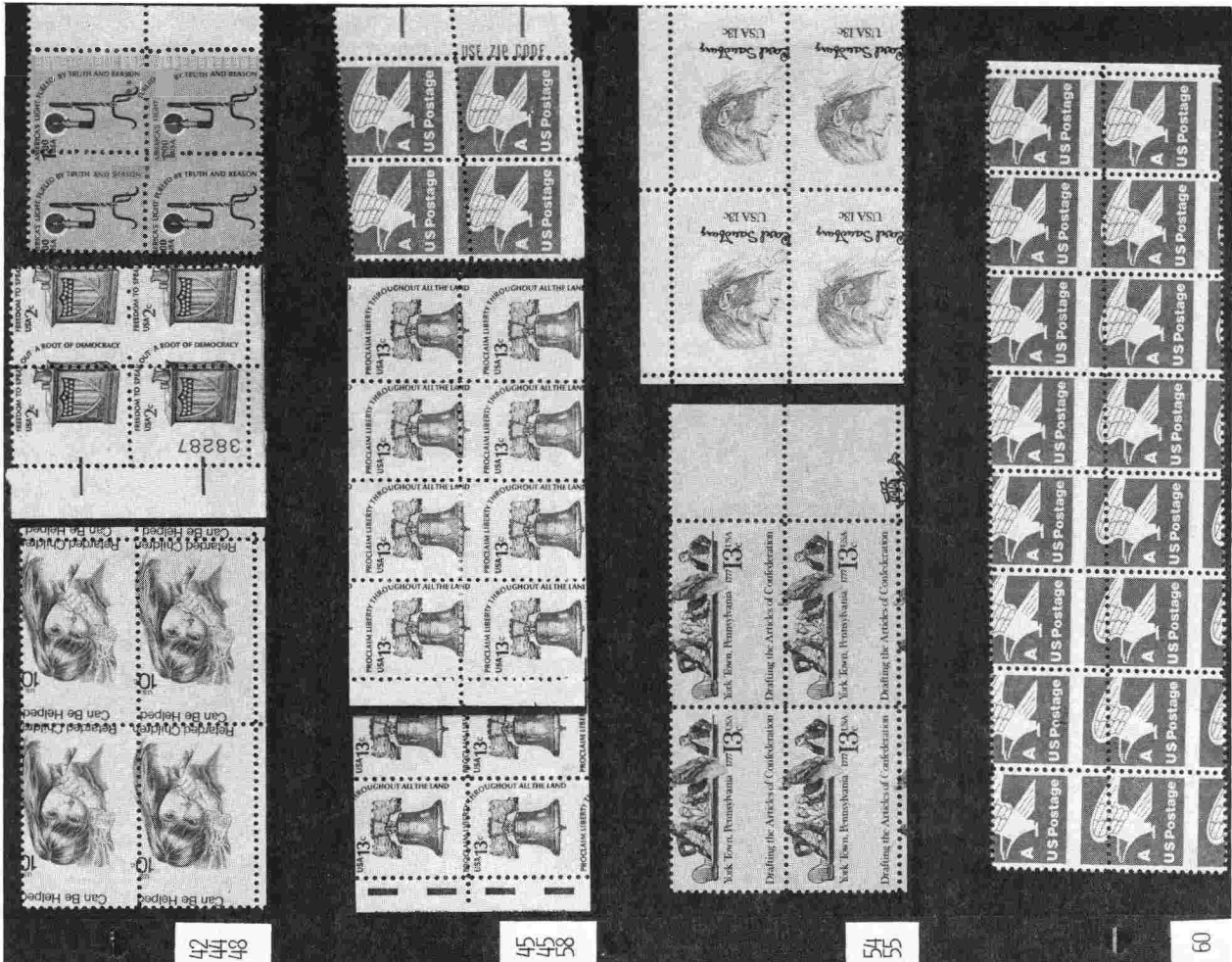
12 13 15 15 21

22 27 29 29 47

31 34 43

46 49 53

57 60 67 74



42
44
48

45
45
58

54
55

60



28
30
35

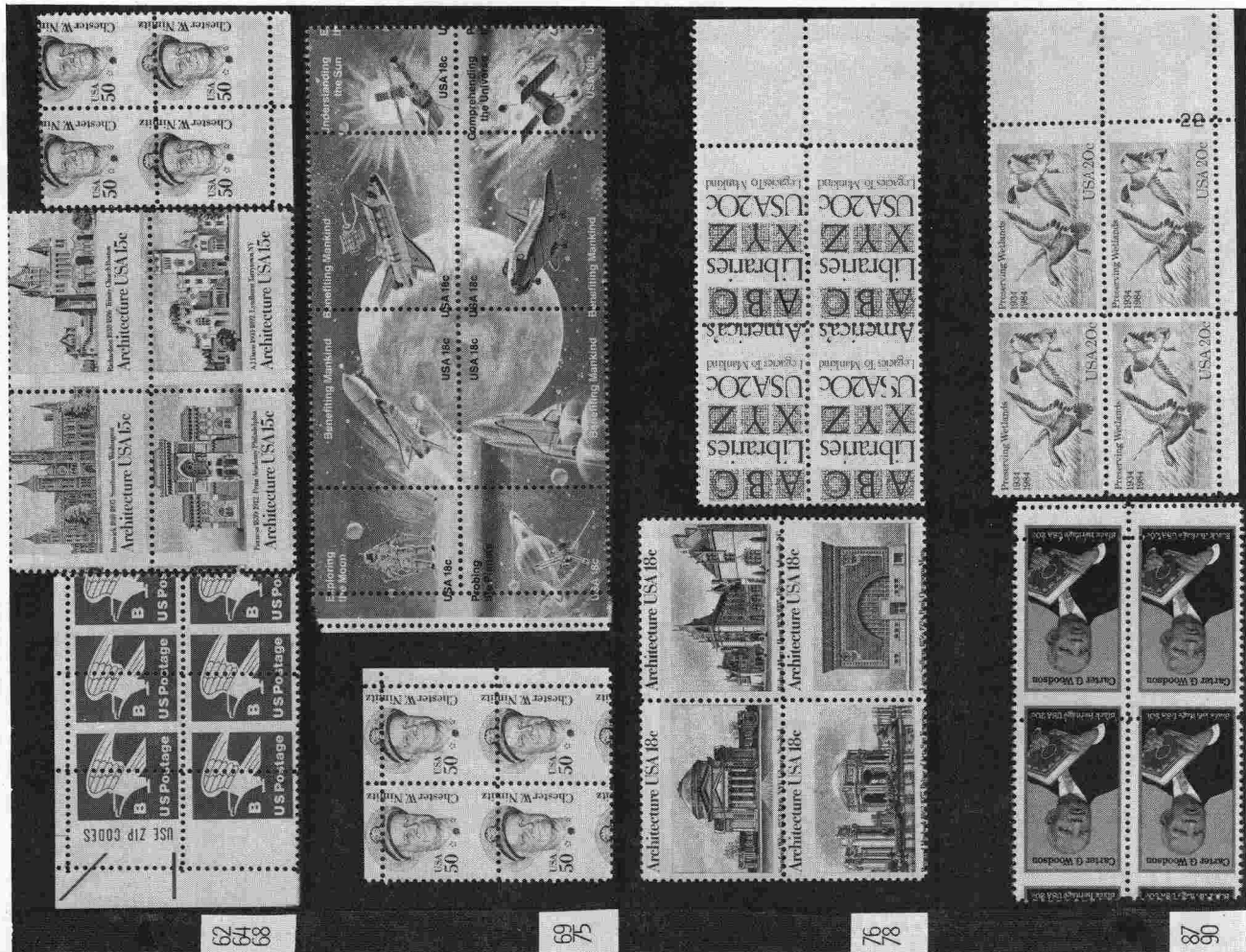
38
38
40
40

41
41
50

61
60
84
86
89

16
16
81
82
174

14
14
108
108
172

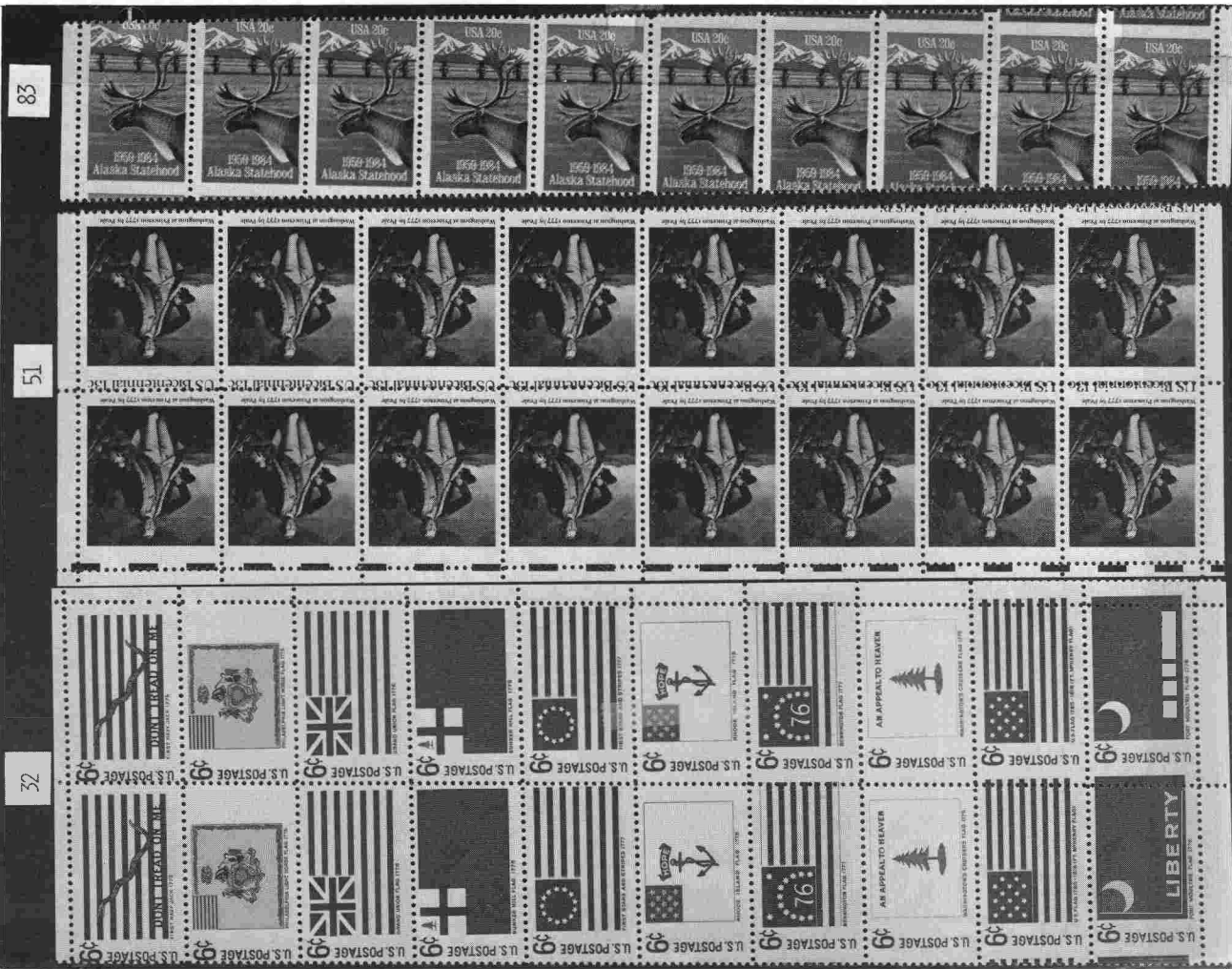
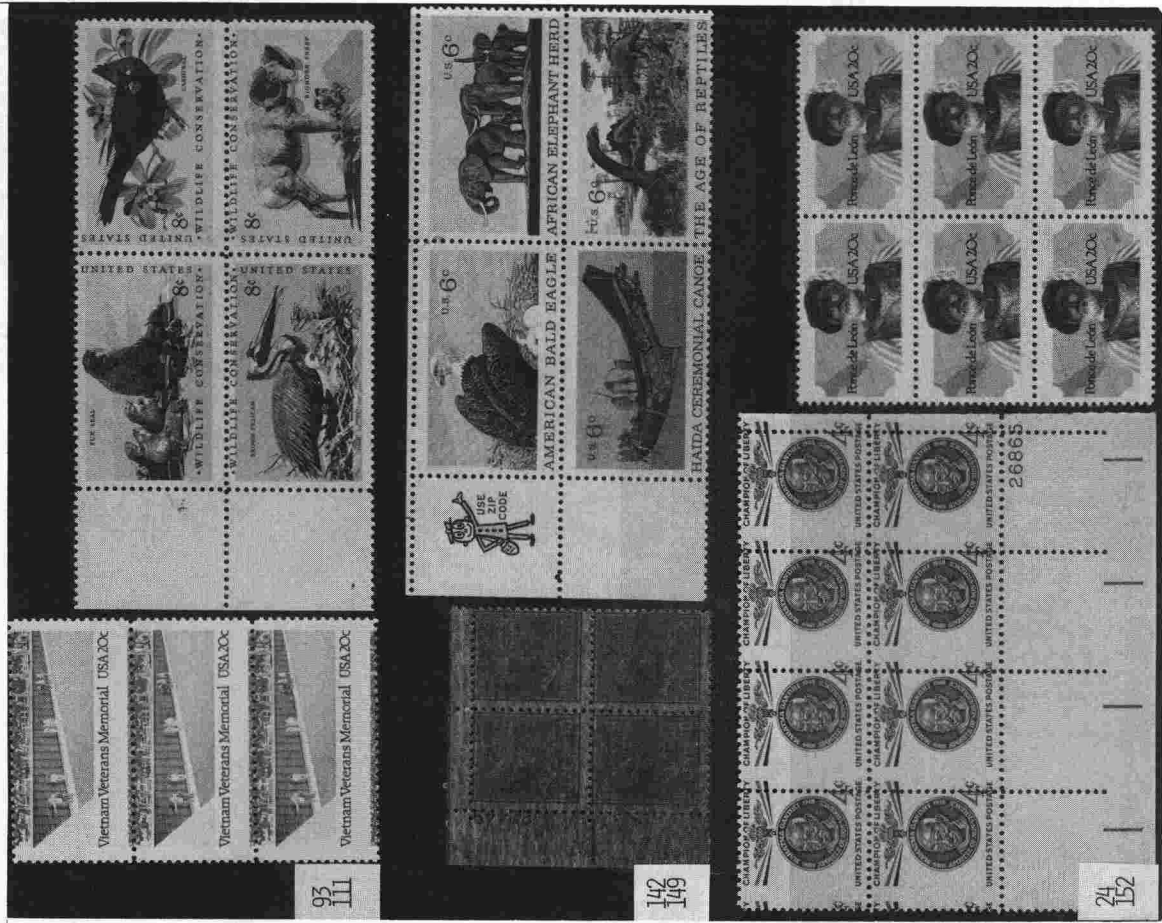


87 88

97 98

76 78

80



83

51

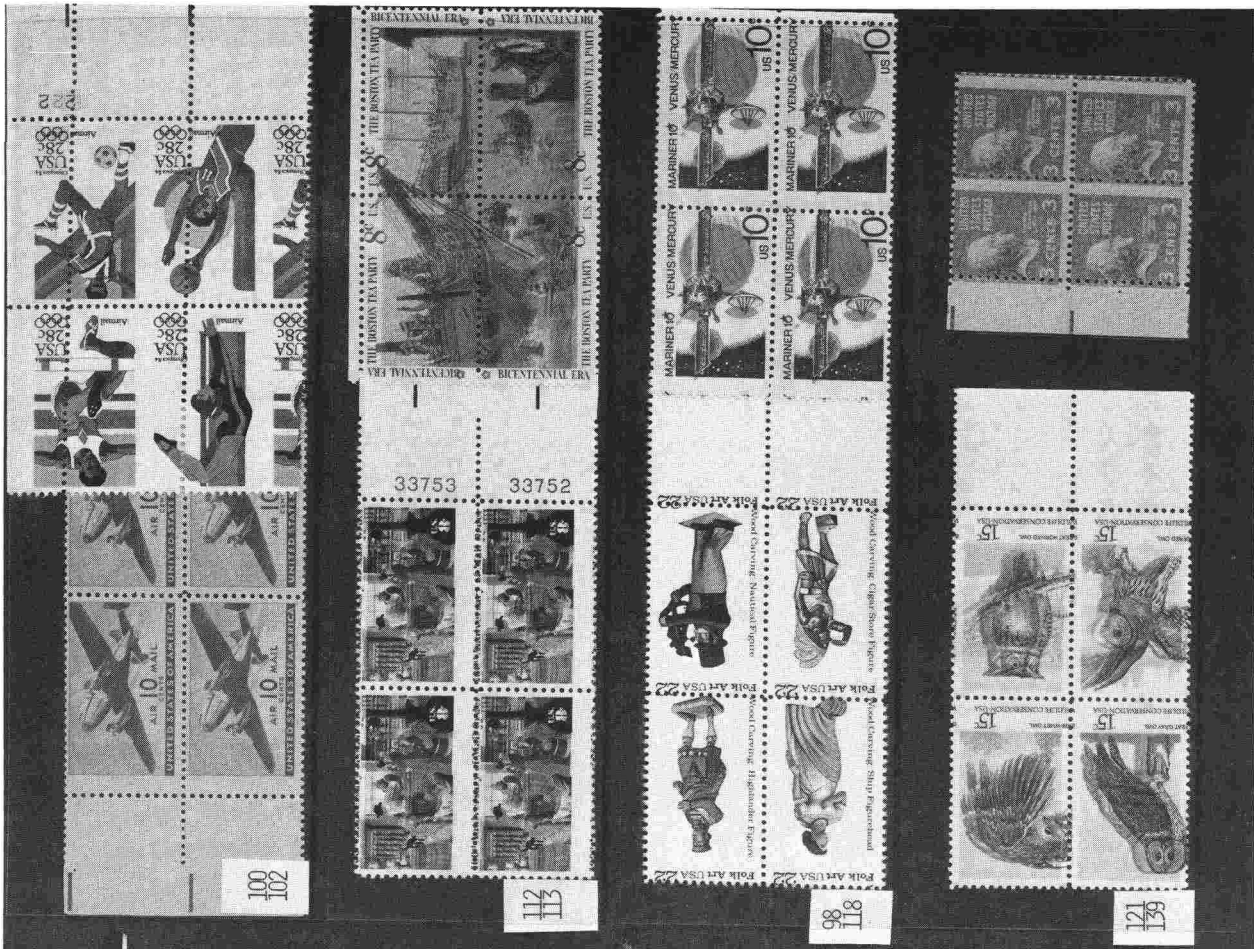
32

93 111

142 149

26865

24 152



100
102

33753

33752

112
113

98
118

121
139



US Bicentennial 13c US Bicentennial 13c

Lafayette Lafayette

US Bicentennial 13c US Bicentennial 13c

Lafayette Lafayette

US Bicentennial 13c US Bicentennial 13c

37916

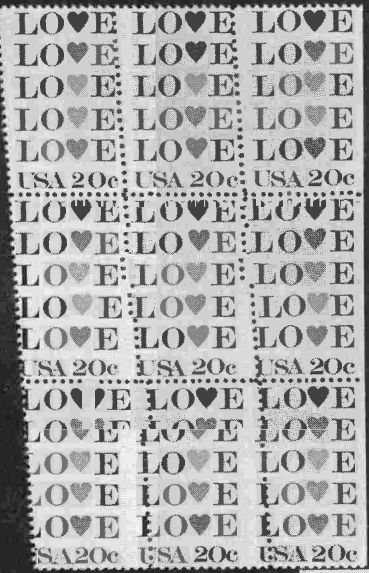
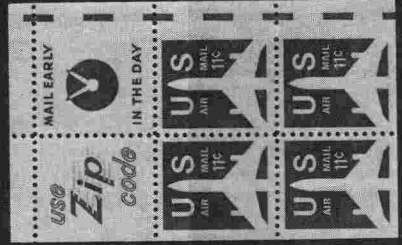
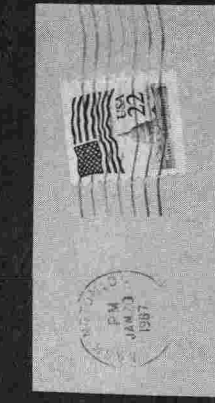


38621

52
147

91
99

119
62
171



135
136
110

129
129
156

159
160
165

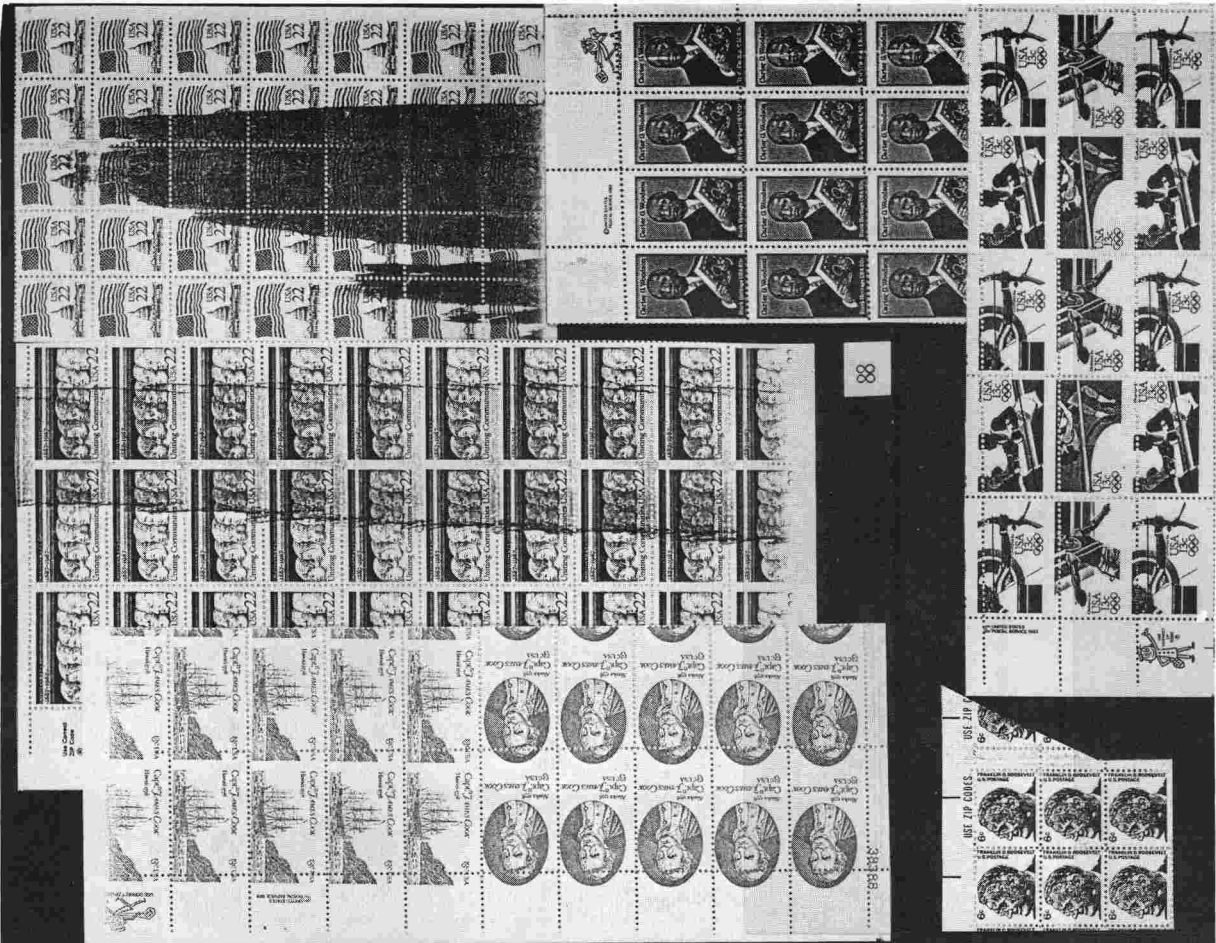
85
172



130
59

131
59

132
59



56
158
155

169
82



126
126
128
128

127
127
127

151
151

170
170
170
170

138
173

124
134

EFOCC AUCTION BID SHEET

Name, Home Address, City, State, EFOCC No., Home Area & Number, Phone

Closing date: September 30, 1987

No buyer's premium will be added to your winning bid.

Send by Insured Mail? All postage costs will be billed to the bidder.

OFFICE USE ONLY

Please execute the following bids for me in this mail auction. (All bid sheets must be signed.)

Signature:

Bids of bidders with purchase limits will be executed in the order in which they list their lots.

Send completed bid sheets to--

EFOCC Auctions 209 East 11th St. Conshohocken, PA 19428

Table with columns: Lot #, Amt, Desc, Lot #, Amt, Desc, Lot #, Amt, Desc, Bid, Lot #, Amt, Desc, Lot #, Amt, Desc

CHECK YOUR BIDS CAREFULLY!

Please limit my purchases to \$ (Limits less than \$25 respectfully declined.)

EFOCC #

Catalog Used (If other than Scott)

- Condition (circle) NH OG LH RG H NG HR NG as issued HH Used

Centering (if applicable) XF VF F Average

Faults (Beyond EFO properties) Describe:

INSTRUCTIONS: Fill in all boxes with underlined headings. Leave the others blank. Then mount your lot here. For covers, multiples, or other lots, use the reverse side of the form or another sheet of paper or cardboard (better). Be sure to include this form if the lot is mounted separately (attach it to the lot, if possible).

Send your lots by registered or insured mail for your protection.

Extra forms are available for 4c each and a SASE. 10 for 1 oz., 20 for 2 oz.

Sale # Buyer # Hammer Cat. Value Retail Est. and Source Minimum Bid

EFOCC Auctions, J. A. Licata, 209 E. 11th Ave., Conshohocken, PA 19423

For Auctioneer's Use

Acceptable Abbreviations and What They Mean

Bidding Increments

Bidding Area	Raise
\$ 1.00 - 9.50	.50
10.00 - 49.00	1.00
50.00 - 97.50	2.50
100.00 - 495.00	5.00
500.00 +	10.00

Irregular bids will be reduced to the next lower level. Each lot will be sold to the highest bidder at one increment over the second highest bid unless the minimum bid is not reached. Any bid not in good faith, in the estimation of the Auction Director, may be rejected. The Auction Director reserves the right to remove any lot from the sale. A set of auction rules is available for an SASE.

CENTERING

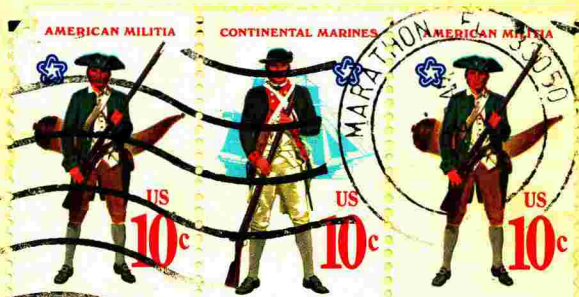
AVE - Perforations cut design
 F - Fine, perfs clear of design
 VF - Very fine, well centered with opposite sides nearly equal
 XF - Extremely Fine, perfect centering on all sides

GUM

NH - Never Hinged
 LH - Light Hinge Mark
 H - Hinged, some gum loss
 HR - Hinge remnants, some pieces adhere to stamp
 HH - Heavy Hinge, much gum disturbance and/or heavy hinge remnant
 OG - Original Gum
 RG - Regummed
 NG - No Gum
 NG as issued - no gum on stamps, issued without gum
 NP - No Photo
 @ - at
 Bklt - Booklet
 blk - black
 BLK - Block
 btw - between

cat. - catalog value
 chng - change
 DBL - double
 dn - down
 EST - Estimate of value
 horz - horizontal
 imp - imperforate
 lf - left
 litho - lithographic printing
 M - Mint, uncanceled
 MB - Minimum Bid, lowest price at which lot will be sold
 mm - millimeter
 norm cpy - normal copy
 Pl# - Plate Number
 pr - pair
 prnt - printers
 rt - right
 SE - Natural Straight Edge
 SS - Souvenir Sheet
 Shf - Shift
 Used - Canceled
 Vert - Vertical
 w/ - with

RETURN TO: Hotchner, POB 1125, Falls Church, VA. 22041-0125
 Mailed From: EFOCC, POB 1058, Marathon, FL. 33050-0058



FIRST CLASS

FIRST CLASS



LT COL El Ray Jenkins - 122
 304 E. Kingswood Drive,
 Enterprise, AL 36330