

The EFO Collector

Published by the EFO Collectors' Club, a nonprofit organization
Copyright 1987 by the EFO Collectors' Club.
APS Affiliate No. 103. Member COPO.

President: John M. Hotchner

Editor: Howard Gates

Volume X, No. 2 (#54)

October 1987

Founded 1978

President's Message--

This is a good time to be an EFOC member. *The EFO Collector*, under Howard Gates's leadership, is building on the base that Lou Novacheck constructed, and is now an EFOC calling card of which we can all be proud. The bimonthly auction run by Joe Licata is beautifully presented and contains material of a range of quality and price that should make it attractive to nearly all our members. The circuit system has been revived, thanks to Howard Pohl and several members who have provided material (more would be welcome.)

We are getting together by mail through one study group (on booklet panes), and I hope to announce another shortly. Some of us met for a fascinating meeting full of fireworks at Boston, and future meetings are being planned. Several of you have written to say you'll be at WESTPEX 89-- our first truly national convention-- and I'm convinced we can make it a major success. I'd like to hear from more of you who can exhibit, help staff the booth, do a monograph for the show program, etc., etc.

Continued on page 3



Page 6

Contents

From the Editor	2
Q: What Is It?	3
Exhibitions	4
STaMpsSHOW	4, 5
Manning Award	11
A: What It Is	11



Page 5

Jennings: Cracked Plates and Fractured Skulls	6
Kitson, Mosher and Perry: Layout Marks on Bighorn Sheep Booklet Panes	12
Gates: Complementary Color Errors	16

Letters	15
EFO Post	15
Caveat Emptor	18
Tell Me Why	18
Canada Freaks	19
Auction Report	20
Auction	21

The Editor's Spacefiller--

It's a golden morning in late summer. The air is so clear that individual leaves are distinguishable on the distant trees across the lake. My boat nods and beckons at its dock. So why am I at the word processor? It's because I'm so grateful for your kind responses to my efforts with the August issue.

To render my gratitude more palpable, I've devised a puzzle for you. Can you get from "STAMP" to "FREAK" in eleven moves? With each move, you must change just one letter and realize a new, standard English word-- no proper nouns, if you please.

0	S	T	A	M	P
1	---	---	---	---	---
2	---	---	---	---	---
3	---	---	---	---	---
4	---	---	---	---	---
5	---	---	---	---	---
6	---	---	---	---	---
7	---	---	---	---	---
8	---	---	---	---	---
9	---	---	---	---	---
10	---	---	---	---	---
11	F	R	E	A	K

I've managed to solve the problem by three different routes, but none shorter than eleven steps. Let me know if you have a more parsimonious solution.

--HPG

ALL CONTENTS COPYRIGHT 1987 BY THE EFO COLLECTORS CLUB. Authors and contributors have express permission to reuse any of their own material elsewhere and without restriction. Except for material reprinted herein, or material individually copyrighted by the author, permission is granted for any material herein to be reprinted elsewhere as long as full credit is given, including Volume and Issue numbers and the address of the EFOCC Secretary.

The EFO Collector is published six times yearly in even-numbered months. The deadline for any issue is the 15th day of the month preceding the month of issue-- e.g., May 15 for the June issue. Send material directly to the Editor.

Subscription membership applications, together with \$10 annual dues, should be sent to the Secretary.

Advertising for The EFO Collector will be accepted at the following rates per insertion: full page, \$28; half page, \$15; quarter page, \$8; classified ads, 6c per word. Multiple-insertion contract rates are approximately 20% less. All advertisements and related inquiries should be directed to the Advertising Director.

EFOCC members are entitled to three, 35-word (excluding address) free "EFO POST" classified ads annually. These should be sent directly to the editor.

1986-88 EFOCC OFFICERS, AND CHAIRMEN

PRESIDENT

John M. Hotchner
P.O. Box 1125
Falls Church, VA. 22041-0125
Phone: 703-820-5449

VICE PRESIDENT

Lou Repeta
76 Biltmore Ave.
Oakdale, NY 11769
Phone: 516-567-9294

TREASURER AND AWARDS DIRECTOR

Phillip E. Nazak, Sr.
P.O. Box 662
Binghamton, NY 13902-0622
Phone: 607-729-4783

SECRETARY

CWO James E. McDevitt, USCG (Ret.)
1903 Village Rd., W.
Norwood, MA. 02062-2524
Phone: 617-769-6531

EFOC MAILER

E. Steven Brand
P.O. Box 86
Marathon, FL. 33050

ADVERTISING DIRECTOR

Dennis Ryan
120 E. St. Lawrence Ave., #213
Janesville, WI. 53545

BOARD MEMBER AT-LARGE

Stuart M. Krensky
Suite 9-L, 1716 Ocean Ave.
San Francisco, CA. 94112

AUCTION DIRECTOR

Joseph A. Licata
209 East 11th Ave.
Conshohocken, PA. 19428
Phone: 215-825-7385

EDITOR

Howard P. Gates, Jr.
615 Lakeview Pkwy.
Box 955, Lake-of-the-Woods
Locust Grove, VA. 22508
Phone: 703-972-2084

CIRCUIT DIRECTOR

Howard A. Pohl
P.O. Box 695059
Miami, FL. 33269-2059
Phone: 305-653-0866

PUBLICATIONS DIRECTOR & PAST PRESIDENT

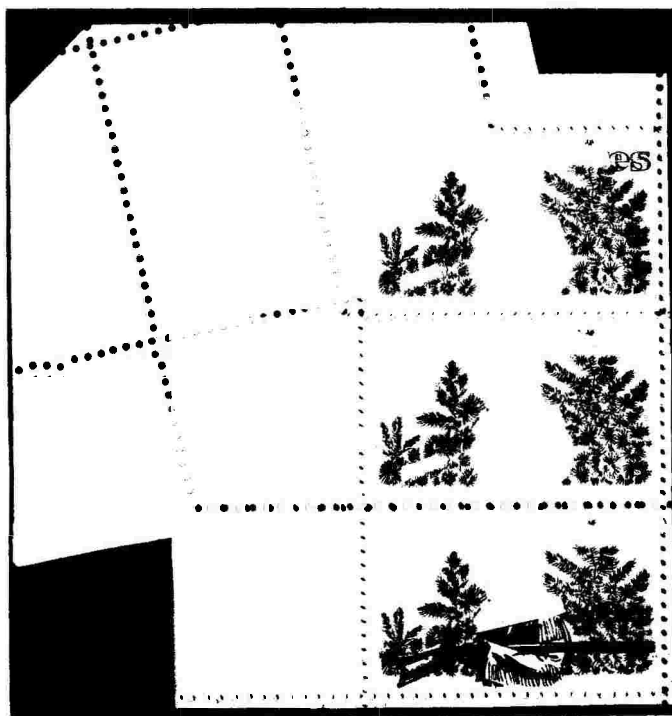
Daniel S. Pagter
P.O. Box-6394
Albany, CA. 94706-0394
Phone: 415-525-8696

PUBLICITY DIRECTOR

Richard H. Hunt
23 Old Orchard Lane
Trumbull, CT. 06611

Q: What is it?

When you find an error that is absolutely unique, with no possibility of recurrence, you automatically think "freak!" Here's an item in that category-- a variety of Scott #1330, the 5c Davy Crockett, misperfed and with colors missing as the obvious result of a foldover. The top stamp lacks most of the intaglio green and black inscriptions; the center stamp is totally absent of both; the bottom stamp lacks the intaglio green. The price for the piece is in the \$10,000 range. So is it a freak? A major error? Or just an oddity? Respond to Howard Gates, Box 955 LOW, Locust Grove, VA 22508. The best answers will be published in a future issue of *The EFO Collector*.



**Dennis Ryan is
Ad Director --**

As of September 1, Dennis Ryan became Advertising Director for *The EFO Collector*. It is to Dennis that all ad copy and payments should be sent. His address is 120 St. Lawrence Ave., #213, Janesville, Wisconsin 53545. His deadline for advertising copy is the tenth of the month prior to the month of issue.

Dennis is a senior high school English teacher and a tournament bridge fanatic. He collects US generally, EFOs on US, and exhibits misperforation on US stamps.

=====

President's Message --

Continued from page 1

One of the enduring observations from STaMpsHOW in Boston is that more dealers than ever are carrying and displaying EFO material. Where once we EFOers were thought of as the lunatic fringe (well, maybe that's a bit strongly stated), our interest and our material are now respectable. Not only are more dealers catering to us, but more literature is being printed, more exhibits are being done, and more attention is being paid to varieties by the average collector.

U.S. ERRORS --

The new, revised catalog *U.S. ERRORS-- Inverts, Imperforates, Colors Omitted*, by Stephen R. Datz, is available to EFOCC members only at a special price of \$9.95, a dollar less than the price to the general public. Order it from General Philatelic Corp., P.O. Box 402, Loveland, CO 80539. Be sure to state your EFOCC membership number. The catalog is the most comprehensive compendium of U.S. errors, and includes illustrations, prices, and known quantities.

As an EFOCC member, you are in the best position to benefit from these trends. You're gaining access to the best sources and bargains. And you have the handiest references to get your questions answered.

On behalf of the membership, I just want to say "thanks" to all who have made this possible and to encourage everyone to use your club. Through use of our services and participation in helping to deliver them, we will continue to grow.

-JMH

EXHIBITIONS--



LAST CALL: The Virginia Philatelic Exhibition will be held November 20-22, 1987 in the Pavilion, the Virginia Beach Convention Center at 1000 19th Street. There will be 350 frames of competitive exhibits; 30 dealers from all parts of the country; a 900-lot auction Friday night; and conventions of the American First Day Cover Society and the Vatican Philatelic Society.

The Eastern Regional Meeting of the EFOCC will be held during VAPEX. There will be a Dutch treat breakfast at 8:30 a.m. Saturday, November 21. And Frank Pogue will make a presentation on postal stationery EFOs. John Hotchner and other officers and chairmen of EFOCC will be looking forward to seeing you there. Drop John a note if you are coming so that he can confirm breakfast arrangements closer to the show date and send you a postcard.

McDevitt on STAMPSHOW 87--

The 101st annual convention of the American Philatelic Society in Boston, August 20-23, was a huge success, and more so as our members were able to garner awards: For exhibits, vermeil medals went to Dr. Jim Benedict for "Preprinting Paperfolds on U.S. Issues" and John Hotchner for "Stamp Separation: Its Development from 1840 to Modern Times;" a bronze went to Vernon Moore for "Errors, Freaks and Oddities."

For literature, a gold award went to John Hotchner for "The Philatelic Exhibitor (Vol. 1);" a vermeil to Hotchner for "U.S. Notes." Silvers were awarded to Hotchner for "Stamp Idea Trading Post" and to Ken Lawrence for "Plate Number Coils" and "Plate Number Coils Considered." Bronzes went to

It's not just stamps and socializing that are attractive at VAPEX-- it's close to Williamsburg and Jamestown, and there's all that good seafood in Virginia Beach and Norfolk.



STAMPOREE 88--

Consider exhibiting your EFOs next Spring at STAMPOREE 88, to be held April 22-24 at the Bahia Mar Resort and Yachting Center, Fort Lauderdale, Florida. It's the newest hotel on Fort Lauderdale's beach, and there will be special hotel rates for attendees. There were four exhibitors in the EFO category in the last STAMPOREE.

For more information, write Stamporee 88, P.O. Box 24430, Fort Lauderdale, FL 33307.

Lawrence for "Booklets of the 1971 British Postal Strike" and to Howard Gates for "Modern Major Errors: Prices and Prevalence." Congratulations!

The EFOCC meeting on August 22 (more fully reported on the next page) was attended by 22 persons, including members Hotchner, Gates, Lawrence, Jacques Schiff, Jim Cotter, John McGovern and Vernon Krause.

Special thanks are owed John Connaughton and Parker Bailey, Jr. [and Jim McDevitt -Ed.] for their manning the APS Affiliates booth during the entire show time. Hundreds of questions were answered and quantities of philatelic literature were distributed.

-Jim McDevitt

Report: The EFOCC Meeting at STaMpsHOW--

Our August 22 meeting at STaMpsHOW was a gas. Speaker Ken Lawrence pursued one of his favorite hypotheses: that most major errors leave by the back door at the Bureau of Engraving and Printing-- else why would the finders of these items want their names kept secret by dealers and auctioneers with whom they subsequently deal? Meanwhile, the error-stamp dealers and auctioneers in the crowd seethed at the implication that they were receiving and selling purloined merchandise whose prior ownership they didn't dare disclose.

Ken made an excellent point: The romance, mystique and value of an error are enhanced by publication of the full story of the find, as exemplified by the fabled history of the inverted Jenny. He brought up as an unfortunate example the unknown provenance of the \$1 Rush Lamp and Candle Holder invert, Scott 1610 (var.) In the ensuing discussion, EFOCC member and well-known auctioneer Jacques C. Schiff, Jr. said that he had purchased the partial pane from nine individuals who wished to remain anonymous, and gave a number of good reasons why quite legitimate buyers and sellers might object to release of their names.

At this point, a bombshell was dropped by Donald J. Sundman, of Mystic Stamp Company, Inc., Camden, NY, now the co-owner of a portion of the \$1 invert sheet. He *knew* the reason for non-disclosure of the names of the original finders, and it was certainly legit. Through a Freedom of Information request, Don had obtained the full story-- slightly "sanitized"-- of the Bureau of Engraving and Printing's investigation of the \$1 invert's production, distribution and sale.

Who sanitized the story? The Central Intelligence Agency. Why? Because the nine owners were CIA employees; their names, titles, and functions, under the National Security Act of 1947 and the CIA Act of 1949, were not to be disclosed, and were deleted.



The investigatory material, made available later by Sundman, disclosed the following: 95 stamps were purchased at the McLean, VA Post Office Sub-station on Spring Hill Road by a CIA employee. The remaining five stamps of the pane remained in the post office and were (presumably) sold later. According to the investigator, "The disposition of the remaining three quadrants [panes] of the one inverted sheet is not known." (Keep your eyes open for used inverts, friends!) Nine of the 95 stamps were assertedly used on CIA mail before the inversion was discovered. One stamp was badly damaged and given to Jacques Schiff; he purchased the remaining 85 on behalf of a third party, and split his payment, at the sellers' request, among the nine unnamed sellers.

The investigators established an "audit trail" back to the BEP, and uncovered no hanky-panky. The basic source of the error was a decision by the head of the Quality Standards Development Branch of the BEP to permit Eastern Fine Paper, Inc., manufacturer of the gummed paper sheets on which Scott 1610 is printed, to deviate from specifications by *not* cutting corners. Normally, one corner of each sheet is cut to provide an orientation key. Without the cut corner, the offset printers of the candle and flame image may have pulled a sheet from the stack for inspection and inadvertently reversed the sheet when replacing it on the stack. The intaglio printers, who receive the offset printed paper gum side up, then have no obvious indication that a sheet is reversed in the stack. Voila!-- instant invert!

Clyde Jennings:

CRACKED PLATES AND FRACTURED SKULLS—

Basically, there are two different types of cracks that occur in the steel plates used to print stamps: linear and rosette. Neither happens frequently, so examples can command good premiums. The cracks sometimes affect only one position on a plate; but on other occasions multiple positions are involved, because linear cracks tend to progressively lengthen with continued use of the plate. Reconstruction of complete cracks can present a long, tedious (and frustrating!) project.



Figure 1

Figure 1 shows the more common so-called "cracked" plate variety. I use the word "variety" advisedly, as the correct definition of a philatelic variety is an example of a deviation from the norm that occurs in the same position on a plate, in the same way, each time the plate prints. Though the example crack in figure 1 is more extensive than most-- it is vertical, the entire length of the stamp-- it illustrates the usual characteristics

of a crack in a printing plate: linear, irregular in format, and often with what I call small "rivulets" off to the sides, giving it a "ragged" look. Remember this, for a bit later will be shown an example of another type of plate marking often confused with a crack.

Ultimately, the crack in figure 1 involved six positions vertically on the plate used to produce Scott 179, as shown in figure 2.

Figures 3 and 4 show examples of a much scarcer type of cracked plate. This version is commonly referred to as a "rosette" crack because of the circular format of the damaged area, with cracks emanating outward from the center of the damage in 360 degrees. A couple of other monickers for this type of damage, because of the specific location of the crack on the image, are "fractured skull" and "hole in the head." A linear crack is much more indigenous to metal than is a rosette type-- so much so, in fact, that these are two examples of only three so far reported in the impression areas of regular-issue U.S. stamps. Figure 3 is Scott 490, a 1c coil; the crack in figure 4 is on Scott 344 and, incidentally, is the discovery copy on this number. At the time of its discovery by the author, the nature of the crack was duly

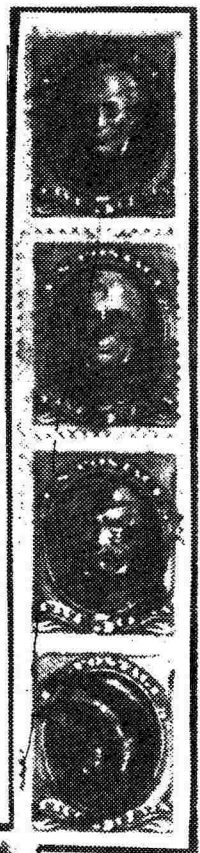
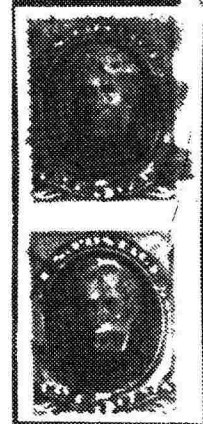


Figure 2



Cracked Plates and Fractured Skulls *(Continued from preceding page)*

reported to Scott, but to date it remains unlisted. There are three other rosette cracks reported so far, but two of them are in the selvage area; and the third, though termed a rosette crack (it really isn't), does not affect the stamp impression. A synopsis of all six rosette cracks is included at the end of this article.



Figure 3



Figure 4

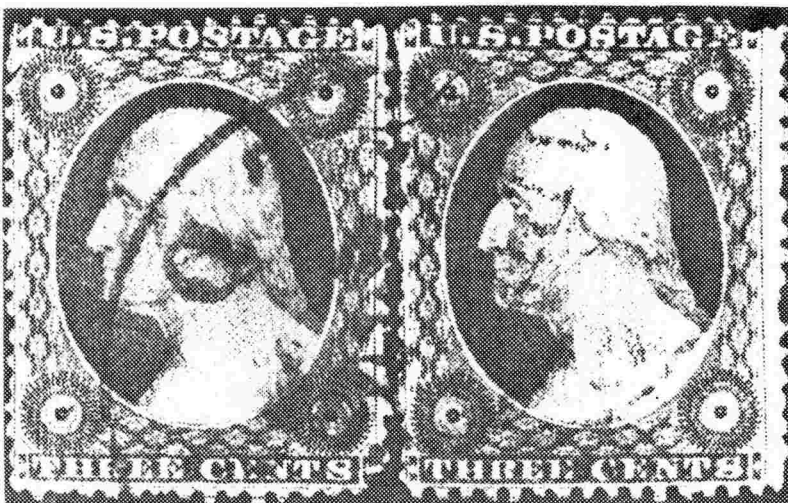


Figure 5

There is another type of crack that is just about as infrequently seen as a rosette crack, and that is an "interior" crack. Basically, it is actually a linear crack as first described, but most linear cracks seem to begin at the edge of a plate and progress toward the interior. Shown in figure 5 is an example of an interior crack on Scott 25, positions 47 and 48 on plate R7; a closeup is shown in figure 6.

Continued on the next page

Cracked Plates and Fractured Skulls (Continued from preceding page)

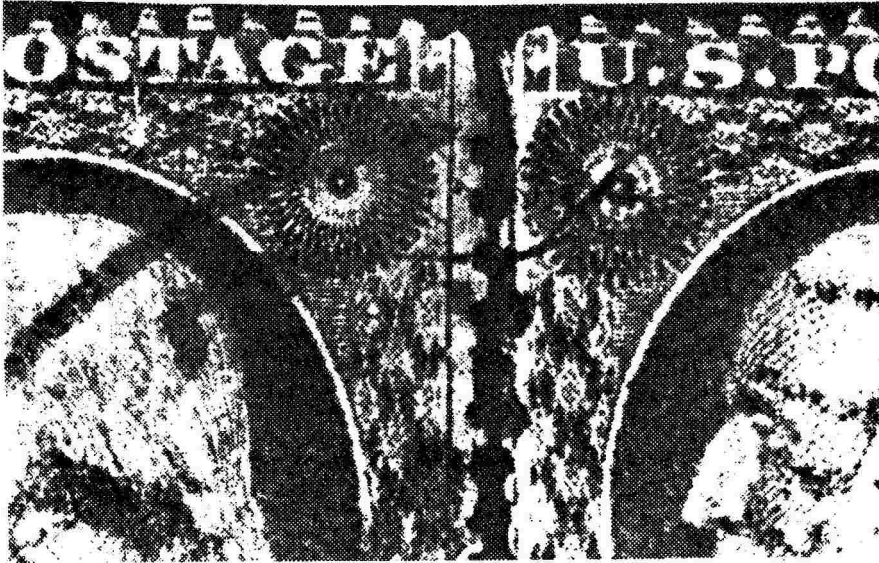


Figure 6

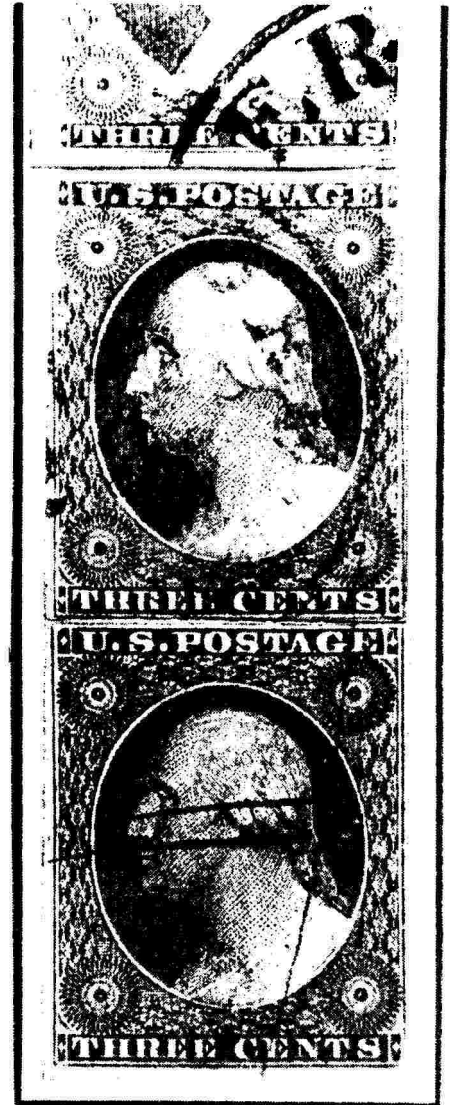


Figure 8

It is an interesting fact, one that I believe merits mention here, that there have never been any reported examples of plate cracks on the very first two plates made for regular-issue U.S. stamps, the 1847 five- and ten-cent values! Some extraneous markings, developed, yes-- such as the "harelip" and "stickpin" varieties on the ten-cent, and some double-transfers during the making of both plates-- but not as the result of cracked plates per se. A pat on the back should go (belatedly) to Rawdon, Wright, Hatch & Edson, the makers of the first two plates-- because as soon as Toppan, Carpenter, Casilear & Co. took over the contract four years later in 1851, their plates began to develop cracks right away on the one- and three-cent values, shown in figures 7 and 8. The one-cent is Scott 7, positions 2L, 12L, 13L, and 23L. Actually, just before the plate was removed from service, the crack developed down a few millimeters into position 33L. However, examples of this are seldom seen. In fact, I am still looking for one with a color cancel-- if it actually exists-- to complete this reconstruction! The three-cent is Scott 11, and the involved positions are 74, 84, and 94 on plate V late.



Figure 7



Cracked Plates and Fractured Skulls (Continued from preceding page)

Now back to that other type of plate marking-- the one that is often confused with a crack. Semantically, a cracked plate is actually a damaged plate, but printing plates suffer other kinds of damage. Such plates are usually grouped together and just called "damaged" plates, as differentiated from "cracked" plates, a more specific description. Damage occurs either during the making of a plate or later, while the plate is in use or being readied for use. A heavy object dropped on a plate can leave a mark that will show up in the stamps produced from that plate. A screwdriver in a workman's hip pocket may make inadvertent contact with a plate and leave its mark; banging a plate against the press while placing the plate into position may leave a permanent tell-tale mark.

Figure 9 shows what has come to be known as "The Bridge Across Niagara," a damage incurred during the making of the plate before it ever went to press for the first time. How can I make such a positive statement as to the chronology of the damage? Because the mark is on the proof sheet at the Smithsonian! This is the perf 11 flat plate version of the 1922-1925 issue, Scott 568. Though you'll find no mention of the damaged position in Scott's catalog, it's Plate #17445, position LL26. Note the marked difference between this marking-- its even and almost steel-edged straight-line nature-- and the irregularity and unevenness of the plate crack of figure 1.

Figure 9



Figure 10

Now have a look at figure 10. See the horizontal line through the Minute Man's hat in the top stamp? This damage occurred after the plate had been made and used. Again, how can I be so positive? Because the bottom stamp shows the same position (LL48 on plate #16807) printed *minus* the damage-- i.e., *before* the damage took place. The postulation is that this damage occurred rather late in the life of the plate, since examples of this plate number and position showing the damage are seen far less frequently than are the ones without the mark. Once again, note the contrast between the characteristics of this mark and that of the cracked plate shown in figure 1.

Synopsis of rosette cracks (by Scott number):

- 332-- Crack is in head, and could be the same as the one shown on 344 in figure 4, since 344 is the imperforate version of 332; it could even be the same plate, as I have not seen an example of the 332 crack.
- 334-- in selvage, around plate number; and in head as shown in figure 4.
- 375-- in head, and entirely different crack than 332 and 344.
- 406-- between stamp impressions and, to my way of thinking, *not* a true rosette crack as represented by the two illustrated herein.
- 408-- in selvage, and above plate number.
- 490-- in head, as shown in figure 3.

WORLDWIDE STAMPS & POSTAL HISTORY

Schiff Auctions



"Especially for Specialists[®]"



If you do not get our catalogs you are missing out! Send \$8.50 (\$12.50 overseas) for a year's subscription to catalogs and prices realized or send \$1.00 (\$1.50 with prices realized) for our next auction.

Catalogs picked up at our office are complimentary.

WHAT IS A SCHIFF "ESPECIALLY FOR SPECIALISTS[®]" AUCTION?

It's an auction designed with YOU in mind, whether you are a buyer or a seller of U.S. or Worldwide stamps.

FUTURE AUCTIONS
U.S. & Worldwide Stamps and Postal History
AUCTION NO. 186
October 22-25, 1987
(Consignments now being accepted for our future auctions.)
AUCTION NO. 187
December 1987

WE INVITE YOU TO CONSIGN
individual stamps, covers or collections for Public Auction or Private Treaty Sale.

WE ALSO PURCHASE OUTRIGHT!
Contact us first, describing your material. Include your address and phone numbers.



Jacques C. Schiff, Jr., inc.

195 MAIN ST.
RIDGEFIELD PARK, NJ 07660

 Licensed & Bonded Auctioneers
Established 1947





TELEPHONE: 201-641-5566, From NYC: 662-2777

A BROCHURE DETAILING OUR SERVICES SENT UPON RECEIPT OF A STAMPED SELF-ADDRESSED LEGAL SIZE ENVELOPE.

• ESPECIALLY FOR SPECIALISTS

• ESPECIALLY FOR SPECIALISTS

**Robert E. Manning
Award for 1987--**

Francis Pogue has been selected as the 1987 recipient of the Robert E. Manning Award for the outstanding original article first published in Volume IX of *The EFO Collector* covering August 1986 through June 1987.

The selection committee, headed by President John Hotchner and including first and second award recipients Earl McAfee and Howard Gates, selected Mr. Pogue's "U.S. Postal Stationery Glossary" in the August and October 1986 issues.

Mr. Pogue, who has been a major supporter of EFOCC since its early days, will join Gates and new Committee Head McAfee to select the 1988 Award winner for the best original article in Volume X. Except for members of the selection committee, all EFOCC members are eligible. In addition to recognition in *The EFO Collector*, the winner receives a \$25 cash award and one year's dues paid by the EFOCC Awards Fund.

Two Kinds of Love--

Love has its ups and downs, as evidenced by the two varieties of Scott #1951 with the blue "USA 20c" inscription omitted. They are shown below. Stephen Datz's 1986 catalog, *U.S. Errors*, mentions both the high kind (one sheet of fifty), and the well centered kind (perhaps two sheets), but doesn't differentiate them as to worth.



**M I A F E A E A I
INKING-IN ROLLER VARIETY**



Of course you can't see it in black and white, but the right two rows of stars is red on these stamps - and the right portion of the stripes is tinged with blue.

A very limited quantity found by a non-member in Oregon. Special for EFOCC members only. Don't delay!

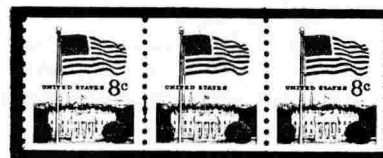
Pair \$12.50 Strip of 4 \$22.50 of 5 \$25.00
One plate number (12) coil strip of 5 \$45.00

Order from John M. Hotchner
 P.O. Box 1125
 Falls Church, VA.

22041-0125

M M M M M

A: What it is:



That coil strip of three 8c Flag Over the White House, Scott 1338G, with the red "8c" missing on the center stamp is--

--a freak, due to a broken inking-in roller. --John Hotchner

--the result of an attempted communist plot to demonetize the USPS, thereby throwing the entire country into chaos. --Richard Hunt

--if there's an albino impression of the "8c" where it should appear [There is. -Ed], it's a freak caused by a faulty ink application roll on the printing press. --Bob Kitson

Bob Kitson, Bruce Mosher and Mike Perry for the Booklet Study Group:

LAYOUT MARKS ON BIGHORN SHEEP BOOKLET PANES--

The appearance of the Bighorn Sheep pane in the August EFOC issue prompted a more in-depth report of layout lines on these booklet panes. The August illustrated pane was only one example of the lines which can be found on the Bighorn Sheep issue. Many other layout line variations can be found on this booklet issue and we will discuss and illustrate some of them in this article.

Layout arcs, dots and lines can be found on many recent U.S. booklet panes. Prior to the current Goebel style booklets (the panes are glued in rather than stapled in), layout lines and arcs were rare on U.S. booklet panes. The best known previous example was reported on a Sc. 1213c pane that had a long arc through one stamp design plus the message label (see BIA's "U.S. Specialist" articles in May 1970, on page 198 and in November 1972, on page 513). Since the introduction of the Goebel book forming machines, we have been finding layout markings in the tabs and in the stamp designs themselves. They are most common on the half-cylinder plates used on the old (and now discarded) BEP Cottrell presses. They are seldom found on panes printed from the cylindrical sleeves used on the "B" and "C" presses.

Within the Cottrell printed issues, they seem to appear most frequently on the 15c Holmes (Sc. 1288Bc), 15c Windmills (Sc. 1742a), 18c Wildlife (Sc. 1889a), and 20c Bighorn Sheep (Sc. 1949a) panes. Among these, the frequency of layout markings seems to increase in the order listed. The reason we can find these layout lines so easily is probably due to reduced attention to plate finishing by the BEP. On the Bighorn panes, layout marks are most common on panes from plates 1, 2, 3, 4, 9, and 10. Plates 1 through 4 were probably rushed due to preparation for the postal rate change from 18 to 20 cents. When plates 7 and 8 both failed (neither plate was certified), the BEP might have hurried plates 9 and 10 to replace them.

Cloudy French's 1979 authoritative "Encyclopedia of Plate Varieties on U.S. Bureau-Printed Postage Stamps" contains this information: "Layout Dots, Lines, and Arcs are scribed on the plate blank by a siderographer to determine exactly where to position each impression of the transfer. If these lines and dots are not burnished off by the plate finisher or are not covered by the design itself, they show on the printed stamp paper." Cloudy could have added to his last sentence that such markings will be particularly apparent on heavily inked and/or poorly wiped printings, especially on early printings from each plate.

Arcs, dots, and lines are so frequent on the cited booklet issues, especially on Bighorn Sheep panes, that it is unlikely anyone could ever find and catalog them all. However, certain layout lines can be found in constant locations in the tabs of some Bighorn panes. Usually these lines are very lightly printed and seldom appear across the entire tab width. These layout marks are visible to the naked eye on many panes. However, they are so fine that they do not reproduce well in photographs, let alone in photocopies such as we must use in this journal. Thus, all of the accompanying pictures have had the layout markings enhanced to insure their visibility.

Figure 1 represents a portion of the printed paper web from the plate layout used for Bighorn Sheep panes printed from plates 1 through 33 which were sent to press. Note that the drawing shows a portion of the web printed from two plates where they are joined together on the press. The space left where the two plates meet is usually sufficiently wide to allow ink to be deposited and then transferred to the paper web where it shows up as a jointline which can then be found at the right or left edge of the finished booklet panes. Many of the residual layout lines appear

Continued on the next page

Layout Marks on Bighorn Sheep Booklet Panes--

(Continued from the preceding page)

to be found on panes which are near the plate jointline. While the layout markings are interesting in that they provide us with some clues as to how the BEP makes printing plate, they are also important to booklet pane specialists who try to determine the position of a particular pane on the original printed web. If you will refer to the web layout in Figure 1 while reading the following paragraphs, we think

you will better understand why we find these layout markings so interesting. We would note before continuing that the numbered booklet pane positions shown in Figure 1 were originally defined by Bruce Mosher's March 1982 U.S. Specialist article and his Figure 49 drawing therein.

With that in mind, look at the portion of the plate no. 3 pane shown in Figure 2. This is obviously a "Type I" pane (from the top row of the web) because it has a portion of the Right EE bar at the upper right edge of its tab. That EE bar is a "longitudinal register mark" that is used by the BEP on their examining machine, we will refer to it simply as an "EE bar" in this article. This EE bar is usually trimmed off, but when found, it is almost always on the bottom pane in a Bighorn booklet. Careful booklet examination with a bright backup light will many times reveal the EE bar hiding under the top pane. We also know the pane in Figure 2 is a plate "Position 1" pane because of that EE bar.

Now notice that there are four horizontal layout lines on the Figure 2 pane: (1 & 2) there is a pair of lines defining the top and bottom extremes of the "Length Register Mark" (the vertical EE dash, or LRM, located over the upper right stamp on every Bighorn pane), (3) another line defining the bottom of the EE bar at the top of the tab, and (4) a line about 0.03 inches (0.75mm) below the "Cross Register Line" (CRL). The purpose of the layout line just below the CRL is less obvious than the others, but it is probably initially used to help correctly locate the stamp designs and the tab control markings along the circumference of the plate blank. Note that there are two layout arcs which show in Figure 2 and intersect that layout line, these arcs are located 0.8575 inches (21.8mm) apart. That distance just happens to be the horizontal distance between stamp designs, and is also half the distance between adjacent LRMS located in the booklet pane tabs.

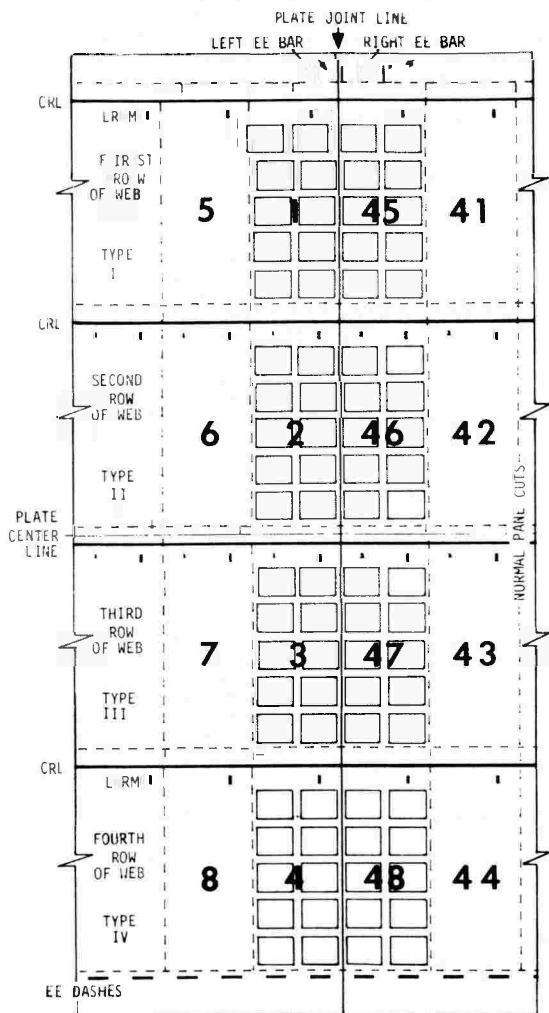


FIGURE 1. Bighorn Sheep web layout section surrounding the joint between two 480-subject printing plates.

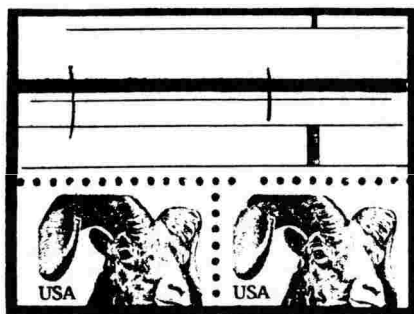


FIGURE 2. Position 1, Type I Pane.

(TO BE CONTINUED IN THE NEXT EFOC ISSUE)

Freaks & Errors

U.S. XMAS SEAL ERRORS

1909-1.2 vert. pair imperf. between	\$ 200.00
1915-1.1 horiz. pair imperf- between	\$ 40.00
1920-2A1 red omitted	\$ 15.00
1920-2A1 red omitted straight edge (SE)	7.50
1924 Horiz. pair imperf. between, crease at gutter.	\$ 50.00
1925-1.5 red & green only "RR"	\$ 5.00
1925 horiz pair imperf vertically	\$ 25.00
1925 as above but strip of three	\$ 35.00
1926-1.p2 black omitted SE	\$ 10.00
1927-3.1 vert pair imperf between	\$ 15.00
1927 horiz pair imperf between	\$ 10.00
1929 horiz pair imperf between, proof	\$ 15.00
1929 vert pair imperf between, proof	\$ 10.00
1929 block imperforate vert & horiz but perforated on all four sides	\$ 75.00
1930 P.12½ vert pair imperf horiz. HG	\$ 5.00
1930 P.12½ horiz pair imperf vert. HG	\$ 5.00
1931 unlisted green color inverted	\$ 5.00
1931-2.2 green omitted	\$ 2.50
1931-1-B.1a horiz pair imperf between	\$ 5.00
1931-1B4 red & black only	\$ 2.50
1931 as above but HG or SE	\$ 1.25
1931 as above but HG and SE	.75
1931 vert pair imperf horizontally	\$ 10.00
1932-4.p3 ultra omitted pair	\$ 3.50
1933 vert pair imperf horizontally	\$ 10.00
1933-2.3 black omitted P.12½, HG	.50
1933-3.2 black and green omitted HG	\$ 1.00
1933-2.1 double green	\$ 5.00
1933-2.2 green omitted (HG \$ 1.00)	\$ 2.00
1933-1.1 green omitted P.12	\$ 2.00
1934-2.3 red and ultra only	\$ 2.50
1935-1.5 red & brown only HG, SE.	\$ 2.50
1936 vert pair imperf horizontally	\$ 10.00
1936 horiz pair imperf vertically	\$ 10.00
1938-4.1 printed on white interlining paper	\$ 5.00
1938 unlisted double brown (SE. \$ 1.00)	2.00

U.S. XMAS SEAL ERRORS

1939 perf in combination with imperf. Strip of ten	\$ 6.00
1940 horiz pair imperf vertically	\$ 1.50
1941 unlisted "S" black & yellow inverted	\$ 4.00
1941 as above but SE	2.50
1941-1.1 no footprints in the snow	.25
1942 perf in combination with imperf. Strip of four	\$ 6.00
1943-3.1 buff, red & blue only, HG pair	\$ 5.00
1944-1 unlisted yellow & grey invert, thin on front	\$ 2.00
1944 red, yellow & grey only, in combination with complete design. "E" HG strip	\$ 7.50
1944 as above but sheet showing 12 errors and 8 partial errors (freaks)	\$ 37.50
1945-2.2 P.12½ yellow & black only	\$ 1.00
1945-4.1 red & blue only	\$ 2.50
1945 perf in combination with imperf. HG block of eight	\$ 10.00
1945 unlisted horiz pair imperf vertically	10.00
1946 unlisted P.12½x12 black omitted SE	\$ 3.50
1947-4.1 blue and green inverted	\$ 5.00
1947 as above but HG	2.50
1947 red and brown only	\$ 5.00
1947-3.1 green omitted (SE \$ 1.00)	\$ 2.00
1949 perf in combination with imperf. HG. Block of eight	\$ 10.00
1949 unlisted red and dark blue only. P.12½ HG	\$ 2.50
1951 "E" perforated vertical gutter block of eight	\$ 15.00
1953 unlisted P.12½ tan only (SE \$ 3.00)	\$ 5.00
1955? Blank seal sheet P.11, HG. Found with 1955 seals.	\$ 7.50
1960 unlisted P.12½ red & green only	\$ 2.00
1960 unlisted P.12½ tan & black only	\$ 2.00
1965 vert pair imperf horiz (blocks pro rate)	\$ 5.00

U.S. X-MAS SEAL FREAKS

1922.plx2 double row of perforations	\$ 20.00
1927 printer's waste block of four	.60
1927 light yellow green sleight back ground trees	.50
1927 as above but SE	.35

U.S. X-MAS SEAL FREAKS

1929 red & yellow 5mm out of register	\$ 1.25
1929 "E&D" yellow offset on back	.50
1929 as above but SE	.35
1931 red & black offset on back	.50
1931 pane of 10, P.12, with one row of double perforations	\$ 5.00
1933 black offset on back	.50
1933 as above but SE	.35
1934 blue & green offset on back	.75
1934 as above but SE	.35
1933 precancel "Santa Claus, Ill."	.75
1933 green offset on back	.50
1933 black & green offset on back	\$ 1.00
1934 out of register, over all yellow	\$ 1.00
1935 blue offset on back	.50
1935 as above but SE	.25
1935 maroon and red offset on back	.75
1935 as above but SE	.35
1936-3.2 "D" missing candle flame block of 16	.75
1935 precancel "Santa Claus, Ill."	\$ 1.00
1937 precancel "Santa Claus, Ill." in black ink	.50
1937 precancel "Santa Claus, Ill." in gold ink	\$ 1.50
1938 red 5mm out of register	.50
1939-3 double eyebrow block	.25
1939 "E" The top 1/3 of the sheet is wildly misperforated	\$ 20.00
1939 "E" The middle 1/3 of the sheet is wildly misperforated	\$ 20.00
1939 "E" The bottom 1/3 of the sheet is wildly misperforated	\$ 20.00
1940 red & blue 5mm out of register	.35
1941 black offset on back	.50
1941 black 5mm out of register	.50
1941 black 2mm out of register. "E" key block of 9	\$ 5.00
1941 "E" sheet with a constant flaw, a moon on seal #45, sheet	\$ 7.50
1943 red & blue 5mm out of register, HG	.40
1944 light blue offset on back	.35
1944 as above but SE	.20
1944 grey and yellow 4mm out of register, HG	.50
1944 as above but SE	.25

U.S. X-MAS SEAL FREAKS

1945 black & yellow 5mm out of register	.50
1945 as above but HG	.25
1945 "U" black & blue 2mm out of register, HG	.20
1945 double red transfer makes "Greetings" difficult to read	.85
1945 as above but HG	.50
1945 pale blue, HG	.50
1945 as above but SE	.30
1945 red, yellow & blue 3mm out of register	1.35
1945 as above but SE	.70
1945 red offset ink on back	.35
1945 as above but SE	.20
1945 "E" sheet. Bottom 1/3 wildly misperforated HG	\$ 10.00
1946 black offset ink on back	.50
1946 as above but portrait block of 16	\$ 10.00
1946 black & yellow 5mm out of register	.50
1946 as above but portrait block of 16, HG	\$ 10.00
1946 pale blue sheet of 100	\$ 15.00
1947 blue & green 4mm out of register	.35
1947 double brown	\$ 1.00
1947 brown shadows	.50
1947 red & brown offset ink on back	\$ 1.00
1947 as above but SE	.50
1947 Blue & green offset ink on back	.50
1947 as above but SE	.25
1947 green offset ink on back	.25
1947 misperforated showing part of 2 seals	.50
1947 blue 5mm out of register, misperforated	1.00
1945 rejected "E" plate. no PH, unlisted sheet of 100	\$ 20.00
1949 light blue & green 4mm out of register no gum	.75
1949 as above but SE	.35
1949 light blue & green 2mm out of register	.50
1949 as above but SE	.25
1950 "S" black 3½mm out of register	.60
1950 as above but SE	.30
1951 black & flesh 10mm out of register HG	1.50
1951 as above but SE	.75
1954 "W" block of 4 with one vert. row of perfs 35% off center, HG	1.00
1954 as above but vert row of perfs 50% off	\$ 2.25
1954 "S" sheet showing a large area of dry print on red plate, HG	\$ 4.00
1958 "E" smatch on black plate upper df t crossing 2 pairs, constant flaw, sheet	\$ 6.00
1960 "E" miscut sheet, 10x9, with a wide margin & color guides across the top of sheet	\$ 5.00
1968 "D" pale blue, block of eight	\$ 2.00
1968 as above but SE	1.00
1969 "B" misperforated block of 4	\$ 1.00
1977 "F" triple black transfer sheet	\$ 5.00
1977 "F" sheet with 3mm paper fold	\$ 5.00

U.S. X-mas seal errors are listed in Green's TB Seal Catalog of the World. Christmas seal errors include, horizontal pairs imperforate between, vertical pairs imperforate between, horizontal pairs imperforate vertically, vertical pairs imperforate horizontally, missing colors (some progressive color proof stages may appear to be missing color errors, but true missing color errors can sometimes be identified by their perforation.), inverted colors, perforated seals in combination with imperforate seals (this happens when the perforating device breaks down) etc.

U.S. X-mas seal "Freaks" are sometimes listed in Green's Catalog and include, misperforated seals, colors printed out of register, seals with offset ink on the gum side (offset ink appears in reverse, like a mirror image), printer's waste etc

TO THE EDITOR--**Trades Wanted**

Any member who would like to trade EFO material should drop me a note ASAP with a 40-word description of what he is looking for and what he has to trade. I'll do up a page of these for the next possible *Collector*.

-John Hotchner

Booklet Study Group

Our Booklet Study Group is working. The article in this issue [page 12] is the first coordinated contribution to the journal. The proposed subject of a future article is ink smears on booklet panes. Have you any that might be included?

-Earl McAfee

1912 Rebecca Dr.

Champaign, IL 61821

Aw, shucks. -Ed.

I just received my August edition...Great, fantastic, beautiful and other accolades on what you did with and for your first *EFO Collector*. --Bruce Mosher

...My compliments to you for doing a splendid job... -Scott Shaulis

The *EFO Collector* looks great.

--Ed Silver

Just a short note to congratulate you on a fine job... -Ken Martin

It's just fantastic... -Joe Licata

Congratulations... -Mike Schrampf

Your layout of the *Collector* is great. Count my vote in favor...

-Earl McAfee

EFO POST--

WANTED: EFOs on U.S. 1834-1837, 1952, US69. Also any foreign EFOs on stamps or postal stationery which feature tennis or masks. Dorothy E. Weihrauch, 9 Island Ave., Apt. 906, Miami Beach, FL 33139.

WANTED: All coils with plate numbers on top. Will trade others-- PNCs or EFOs. Alan Rosenberg, P.O. Box 2502, Syracuse, NY 13220-2502.

WHILE THEY LAST: Any member involved with children's stamp groups: I'll send you 100+ Scott 231 for 22c SASE. Earl McAfee, Box 3266 Champaign, IL 61821.

WANTED: EFO exhibitors for Filatelic Fiesta 88 at the St. Claire Hilton, San Jose, CA, Feb. 19-21, 1988. Prospectus from Michael Holly, 360 N. 17th St., San Jose, CA 95112-1848

WANTED: Mexican EFO's. Civia Tuteur, 7327 N. Osceola, Chicago, IL 60648.

DOUBLE TRANSFERS WANTED: Scott 557 5c Roosevelt 15571 U.L. 86 (also same DT on Canal Zone 86) and Scott 569 30c Bison 16065 UR 52. Send or write with asking price. All other DTs wanted as well. Ralph E. Trimble, P.O. Box 532, Stn. A, Scarborough, Ontario, Canada M1K 5C3.

FOR SALE: 27 minor EFOs. Over \$9 face value for \$14. Send SASE for complete list. Scott A. Shaulis, 119 W. Sanner St., Somerset, PA 15501.

ALMOST FREE: Send \$2.79 for my 1986 catalog "Missing Inscription United States Stamps." Howard Gates, Box 955 LOW, Locust Grove, VA 22508.

EFO STAMPS ON APPROVAL: Request a selection and I will donate a freak valued at \$5 to the EFO Collectors' Club and offer you \$5 credit toward your next purchase. Ag, P.O. Box 1, Medford, NJ 08055.

BLUE CAPITOL-- 2115: Used on piece, \$10, or will trade for red Capitol. Ed Westen, Rt. 1 Box 233, Blanchard, MI 49130.

FREE: EFO USA Christmas Seal pricelist. Most USA Christmas Seals are available in imperforate NH pairs for 20c. Recent imperforate sheets, \$2-\$4. I also have USA Christmas Seal gutter pairs. Free, fully-illustrated pricelist. John Denune, 234 East Broadway, Granville, OH 43023.

WANTED: Any EFO of Scott 1928-1931. Send photo or description to Richard Hunt, 23 Old Orchard Lane, Trumbull, CT 06611.

WILL BUY OR TRADE: Back of the book EFOs-- mint, used, or on cover examples of Scott E, F, FA, JQ, UX, Q, QE and QI. Also want Q, JQ, QE, QI and UX normal covers. Dan Pagter, P.O. Box 6394, Albany, CA 94706-0394.

Howard Gates:

COMPLEMENTARY COLOR ERRORS--

A fascinating facet of missing-color error-stamp collecting is finding complementary pairs. By "complementary" I mean that one stamp of the pair contains exactly the colors that the other member of the pair lacks, and vice versa, so that if you were to amalgamate the two, you'd have a complete design.

Needless to say, the number of such complementary pairs is not large-- but assembling a collection of them can be expected to deflate one's bank account. My listing follows:

8c Historic Preservation block of four (1971).

a) Intaglio black brown omitted, Scott 1443b.

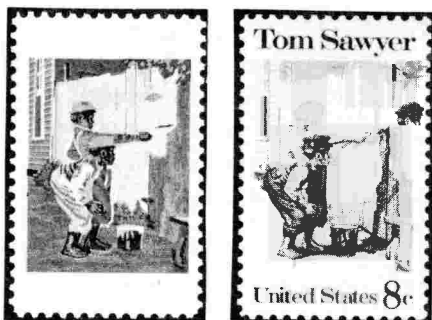
b) Lithographed ochre omitted, Scott 1443c.



8c Tom Sawyer (1972).

a) Intaglio black and red omitted, Scott 1470b.

b) Lithographed red, blue, yellow and gray omitted, Scott 1470c.



8c Copernicus (1973).

a) Lithographed yellow omitted, Scott 1488a.

b) Intaglio black omitted, Scott 1488b.



10c Pioneer-Jupiter (1975).

a) Lithographed yellow and red omitted, Scott 1556a.

b) Intaglio blue omitted, Scott 1556b.



\$1 candle and holder (1979).

a) Intaglio dark brown omitted, Scott 1610a.

b) Lithographed yellow, orange and tan omitted, Scott 1610b.



18c five-stamp Declaration of Independence souvenir sheet (1976)

a) "USA 18c" omitted on all five stamps; imperf; Scott 1687k.

b) Design and marginal inscription omitted; perforated; "USA 18c" printed on all five stamps; Scott 1687f.

Continued on the next page

Complementary Color Errors

(Continued from preceding page)

24c five-stamp Washington Crossing the Delaware souvenir sheet (1976).

- a) "USA 24c" omitted from all five stamps; imperf; Scott 1688f.
- b) Design and marginal inscriptions omitted; perforated; "USA 24c" printed on all five stamps; Scott 1688h.

31c Wright Brothers airmail pair (1978).

- a) Intaglio black and ultramarine omitted, Scott C92b.
- b) Lithographed black, yellow, magenta, blue and brown omitted, Scott C92a (var.)

15c Bernardo Galvez (1980)

- a) Intaglio dark brown, claret and light gray blue omitted, Scott 1826a.
- b) Lithographed red, blue, brown and light yellow omitted, Scott 1826 (var.)



New Find--

According to Bill Langs of Ansonia Station, NY, he discovered an error pane of 22c Enrico Caruso stamps "on August 1 in the Nevada desert." The pane is now in the hands of Larry Bustillo of Suburban Stamp, Inc., Springfield, MA. Stamps in the ninth and tenth columns of the pane (ten stamps) are totally lacking their inscriptions; inscriptions are partially absent in the eighth column. It is said that individual error stamps are being offered at \$1350.



Caveat Emptor --

Missing Yellows:

Beware of U.S. stamps missing yellow or orange colors unless they are accompanied by APS or Philatelic Foundation certificates. They may have been chemically altered. Among them are Scott numbers

- 1455a, 8c Family Planning (1972)
- 1471, 8c Christmas Angels (1972)
- 1548, 10c Sleepy Hollow (1974)
- 1723-4, 13c Energy Conservation (1977)
- 1744, 13c Harriet Tubman (1978).

Modern Canada:

Beware of Scott #537a, 7c Maple Leaf in Autumn (1971), with missing inscription-- if you hold the stamp at a slant, so that light reflects from the surface, you can see that the inscription has been mechanically erased.



Through the courtesy of Jacques C. Schiff, Jr., an illustration of the fake 537a, missing the gray inscription, is shown at left. This stamp had been accompanied by a 1985 Greene Foundation certificate that was later discredited.

Be warned about chemically altered Canadian stamps from the early 1970s on. The Mounties have seized some of this material in Quebec City, but there's lots more around. If you come across some, notify Michael Millar, Chairman, Anti-Theft Committee, the Royal Philatelic Society of Canada, P.O. Box 745, Barrie, Ontario, Canada, L4M 4Y5; telephone (705) 726-5018.



Tell Me Why, Daddy --

Ed Silver ("Ag") of Medford, N.J. sends this question: See the coil strips of the 2c Jefferson, Scott 1055, below? The upper strip has the partial plate number 25045. The lower carries two

partial plate numbers-- 00100 and 00110. Why? Respond to Howard Gates, Box 955 LDW, Locust Grove, VA 22508. The best answers will be published in a future issue of *The EFO Collectore*.



Canada Freaks-

Thomas Vaillancourt of Quality Investors, Ltd., Middletown, NY, supplied some interesting Canadian EFOs from his stock. They are quite unlike U.S. printing errors, in that a segment of the lithographically printed design is spectacularly absent. While one tends to be skeptical about their authenticity-- the ink absences could have been brought about chemically or mechanically-- a canvass of Canada dealers at STAMPSHOW turned up none with a negative opinion. Moreover, look at the 10c Benjamin Franklin (1976), Scott 691, below. In the variety, at the right, the missing-ink trench that runs from Detroit to Quebec is overprinted with map legends in black, suggesting that the error occurred in the printing process before the stamp reached the public.



Normal Scott 691 Variety

Unfortunately, the same conclusion can not firmly be reached with respect to the 1978 14c Christmas stamp, Scott 774. The faintly sacrilegious variety (below, right), showing the Baby Jesus blowing smoke, has no overprints to demonstrate its validity.



Normal Scott 774 Variety

Finally, there's the 17c Women's Field Hockey issue of 1979, Scott 834. The normal stamp is at the top and the variety below. In the variety, the descending hockey ball is trailed by the kind of motion lines that a conventional cartoonist might have drawn in. The lines terminate at the "CANADA" inscription; again, one can not answer certainly the question of whether the deviation from normal came during the printing or later.

Normal

Scott 834

Variety



ANYONE CAN OWN THE NORMAL!



Change of
Design
Perf Shift!
\$10.00

REQUEST A SELECTION OF OUR EFO STAMPS ON APPROVAL AND RECEIVE \$5.00 CREDIT TOWARD YOUR NEXT PURCHASE!!

Ag

POST OFFICE BOX 1
MEDFORD, NJ 08055

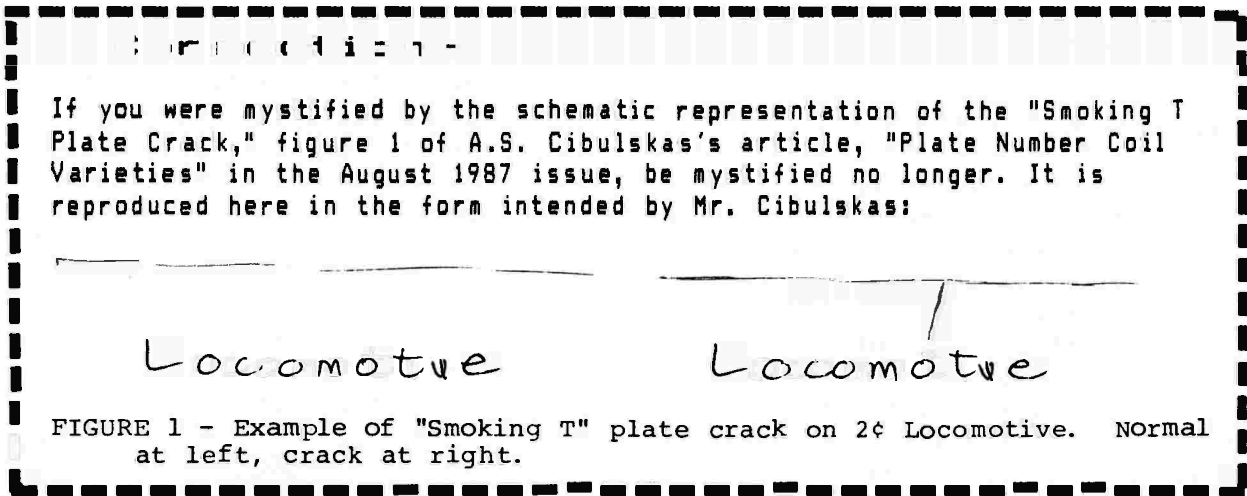


FIGURE 1 - Example of "Smoking T" plate crack on 2¢ Locomotive. Normal at left, crack at right.

Auction Report --

Analysis of Auction #31:

Total number of lots.....131
 Number of lots sold..... 89
 Number of bidders..... 36
 Successful bidders..... 30
 Most popular lots.30,37,53,78

I have received several complimentary comments regarding the quality of the auction photos in Auction #32. I think we have achieved a level of quality competitive with larger auction houses. As much as I would like to take the credit, it belongs to *The EFO Collector* editor, who has spent a great deal of his time implementing improvements in the auction and upgrading the appearance of the *EFOC*. Other refinements, now being considered, will enhance the clarity and readability of auction descriptions and photos, to the benefit of both consignor and bidder. But improvements in quality usually increase costs, and the *EFOCC* auction is no exception.

5% BUYER'S COMMISSION: Increased auction size, consignment quality, and bidder interest have improved the financial status of the auctions, but not enough fully to offset expenses. It has become necessary to impose a 5% buyer's commission on all successful bids beginning with the December auction (#34). When we have seen the impact of this change on our financial situation, we may decide to maintain, reduce, or eliminate the buyer's commission. I am very optimistic, and

believe the auction can be self-supporting if participation continues to increase. I know we've had our problems with late issues and confusing closing dates, but I feel that those problems are now behind us. If you have any comments, suggestions or concerns, please write me or, better still, drop me a note with your bid.

I'd like to thank the following members for their lot donations to the auctions: Ed Silver, #14; Ed Spicher, #212; Louis Repeta, #299; Jane Adams, #579; and Michael Holly, #587. If you have any EFO items that don't fit into your collection, or you find your interest in one area of specialty waning as it increases in another, consider donating your oddballs to the auction. We'd be glad to receive them. Good luck in the auction!

--Joe Licata

AUCTION #31 PRICES REALIZED

LOT#	BID	LOT#	BID	LOT#	BID	LOT#	BID	LOT#	BID
2	31	29	17.50	57	11	79	14.5	100	11
3	31	30	52.50	60	10.50	80	10	101	11
4	8	31	19	62	8	81	9.50	103	12
5	9.50	32	11	63	10	82	16	104	9
7	28	33	21	64	18	83	8	105	14
8	9	34	7	65	12.50	85	14	106	48
9	12.50	35	11	66	5	86	32	107	48
10	41	36	65	67	24	87	37	108	22.50
11	11	37	22	68	22	88	40	110	2.50
12	8.50	38	18.50	69	8.50	89	40	111	6
13	11.50	41	9	70	25	91	35	112	5
16	10	43	34	71	7	92	46	115	6
19	22	44	24	72	14.50	93	2.50	119	9
20	30	48	11	73	11	94	6.50	120	55
23	30	49	13	74	12.50	95	20	D1	5.50
26	52.50	52	35	75	27	96	26	D7	10
27	21	53	13	77	8.50	98	11	D8	9
28	13	56	11	78	22	99	11		

Auction #33-- October 1987

Closing date: November 30, 1987

UNITED STATES

A. PERFORATIONS

MIN BID

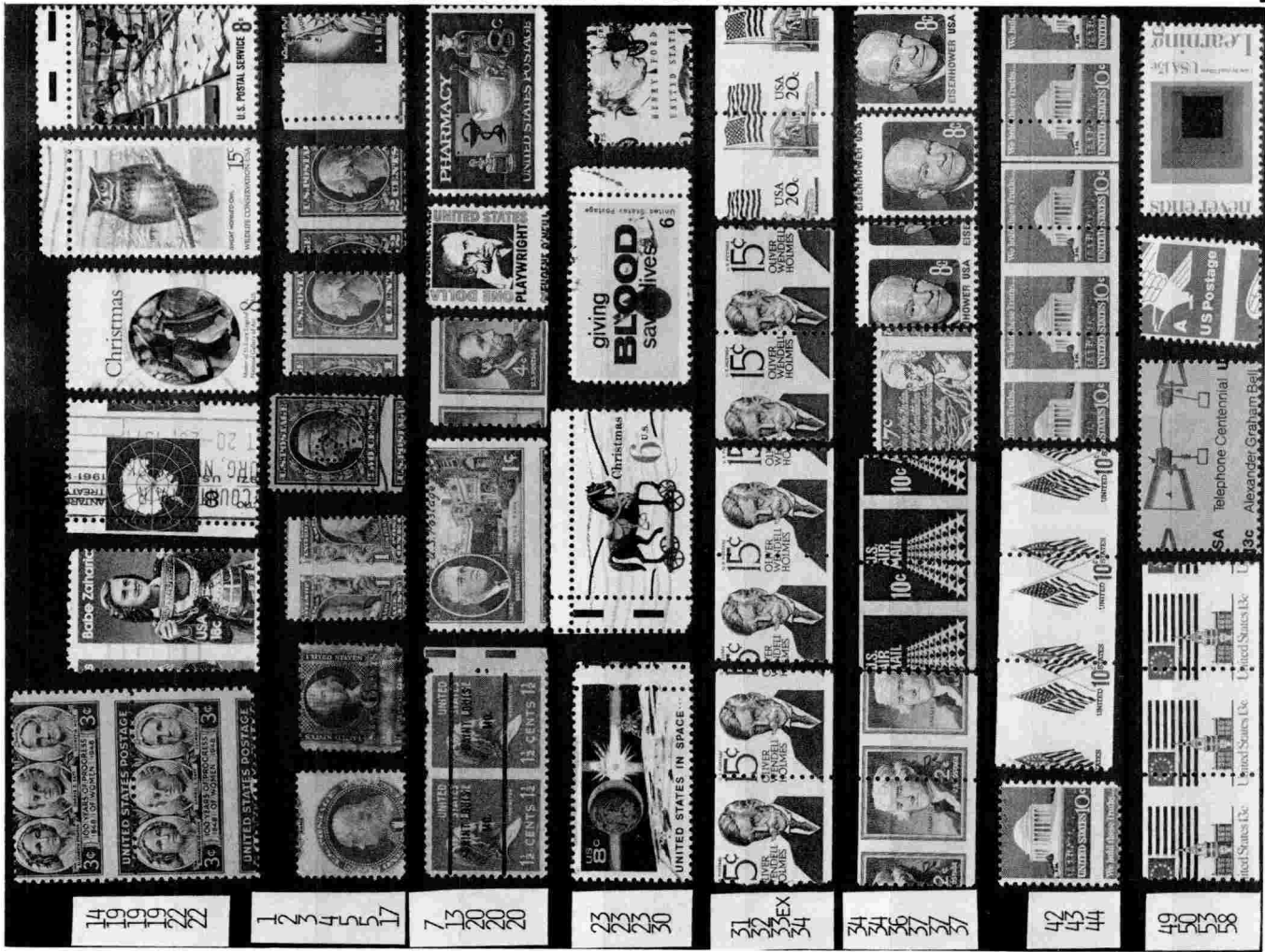
LOT# SCOTT MIN BID

- | | | | |
|----|--------|---|-------|
| 1 | 112 | Mint NG single with 2+mm misperf. | 60 |
| 2 | 113 | Nice used single with 3+mm misperf. | 60 |
| 3 | 300 | Mint NG single with 50% vert. misperf. | 40 |
| 4 | 332 | Real nice used single having "RI" perfin pattern and misperfed with 4mm of lower stamp. | 5 |
| 5 | mix | Four (4) mint OG singles with 4-6mm vert. perf shifts. | 12 |
| 6 | 684 | MNH plate block/15 with horz. perfs shifted 2mm low. | 15 |
| 7 | 805b | MNH pre-cancelled margin pr. imperf between. | 6 |
| 8 | 806 | MNH block/4 with 3mm horz. perf shift. | 10 |
| 9 | 899 | MNH corner block/4 imperf between top pair; one perf between bottom pair. | 30 |
| 10 | 900 | MNH margin block/4 with one perf between top and bottom pairs. | 15 |
| 11 | 905 | MNH plate block/4 with vert. margin perfs shifted into plate #23177. | 6 |
| 12 | 905 | MNH (tiny gum spot) block/4 with 4mm horz. perf shift. | 2 |
| 13 | 930 | MNH single with 3mm horz. perf shift. | 10 |
| 14 | 959 | MNH pair with 5mm horz. perf shift. | 15 |
| 15 | 959 | MNH corner block/4 with 3+mm horz. perf shift and dry printing. | 15 |
| 16 | 1018 | MNH block/4 with vert. perfs shifted 5mm to left. | 16 |
| 17 | 1035 | MNH single with perfs shifted 10mm into selvage. | 30 |
| 18 | 1035 | MNH block/4 with horz. perf shift 4mm up. | 12 |
| 19 | mix | Seven (7) nice used misperfs--1276, 1431, 1471, 1472, 1485, 1557, & 1932. | 10 |
| 20 | mix | Ten (10) MNH EFO's including misperfs & color shifts. | 16 |
| 21 | mix | Thirteen (13) used misperfs--commems, regulars and a 1st issue revenue. | 20 |
| 22 | mix | Ten (10) used gutter snipe singles. | 10 |
| 23 | mix | Twenty (20) used gutter snipe singles. | 18 |
| 24 | mix | Thirty (30) used gutter snipe singles. | 25 |
| 25 | mix | Forty (40) used misperfs, miscuts and color shifts. | 35 |
| 26 | mix | SAME! | 3 |
| 27 | 1095 | MNH block/4 with vert. perf shift 4mm left. | 15 |
| 28 | 1281 | MNH left margin block/4 w/ perf shift 6mm left. | 17.50 |
| 29 | 1281 | MNH right margin block/4 w/ vert. perf shift 6mm left. | 15 |
| 30 | 1286A | MNH single with 4x6mm 2-way misperf and ink offset on gum side. | 7.50 |
| 31 | 1035E | MNH coil pair with perf shift 2+mm right. | 2 |
| 32 | 1035E | Same--with 5mm misperf right. | 2 |
| 33 | 1035E | Three (3) MNH coil pairs with 2, 5, & 11mm perf shifts (5mm has hinge mark). | 10 |
| 34 | mix | Eight (8) different MNH coil pairs with 5 to 12mm perf shifts. Nice lot! | 40 |
| 35 | 1361 | MNH pair with 4mm perf shift up on bottom margin pr. | 18 |
| 36 | 1383d | MNH single with 3mm vert. perf shift. | 2.50 |
| 37 | 1374 | Four (4) singles with various perf shifts. | 12.50 |
| 38 | 1394 | MNH zip block with horz. perfs shifted down 5mm thru "E" of "CODES". | 15 |
| 39 | 1421-2 | MNH pair with horz. perfs shifted 7mm low. | 16 |
| 40 | 1438 | Used margin strip/4 with 3 1/2mm perf shift to right. | 5 |

B. COLOR SHIFTS

- | | | | |
|----|---------|---|-------|
| 41 | 1480-3 | MNH plate block/4 with vert. perfs shifted 4mm left. | 16 |
| 42 | 1510 | MNH single with 4 1/2mm horz. perf shift. | 3 |
| 43 | 1519 | MNH yellow gum coil strip/3 with perfs shifted 8mm left. | 20 |
| 44 | 1520 | MNH coil line strip/4 with perfs shifted 9mm to right. | 18 |
| 45 | 1549 | MNH pair having 4x3mm 2-way perf shift. | 2 |
| 46 | 1564 | MNH VF corner single with gutter snipe. | 100 |
| 47 | 1582 | MNH Full Sheet with horz. perf shift 5mm up. | 18 |
| 48 | 1510 | MNH margin block/4 with vert. perf shift 3mm right. | 4 |
| 49 | 1625 | MNH coil strip/3 with perf shift 4+mm to right. | 12.50 |
| 50 | 1683 | MNH single with 6x6mm 2-way misperf. | 17.50 |
| 51 | 1716 | MNH margin single with 5mm misperf down---top tab shows printing from sheet above. | 35 |
| 52 | 1720 | MNH margin block/4 with horz. perf shift 8mm down. | 4 |
| 53 | 1735 | MNH single with horz. perf shift 7mm down. | 25 |
| 54 | 1735 | MNH plate block/4 with horz. perf shift 4mm down. | 20 |
| 55 | 1735 | MNH bottom strip/16 with horz/diagonal perf shift 3 to 8 mm. | 3 |
| 56 | 1818 | MNH Full Sheet with 2-way misperfs and several paper creases diagonally on back resulting in off-line perfs. EE bars inside left margin stamps and selvage shows portion of stamps from pane at left. | 350 |
| 57 | 1833 | Mint NG single with 5mm horz. perf shift. | 3 |
| 58 | 1845 | MNH Full Sheet having 1st three rows of perfs shifted left---Plate #, "USE ZIP CODE", & C/R inside stamps. | 50 |
| 59 | 1838 | Used (on paper) single misperf with lettering on top instead of bottom. | 8 |
| 60 | 1848 | MNH plate block/16 with two vert. rows shifted 3mm to left. Half of plate #2 inside stamp. | 15 |
| 61 | 1863 | MNH block/4---nearly invisible vert. pin impressions. | 15 |
| 62 | 1895a | MNH VF imperf coil pair. | 4.50 |
| 63 | 1895 | MNH coil pair with perf shift 9mm to right. | 3 |
| 64 | mix | Three (3) MNH coil strips w/ 2, 3, & 5mm perf shifts; 1901, 1904, & 1908. | 20 |
| 65 | 1912-19 | Super MNH Full Sheet with perfs shifted 6mm to right splitting "US" from "A". | 160 |
| 66 | 1912-19 | Impressive MNH top strip/16 with vert perf shift 5mm right; also, light blue color shift 1+mm right. | 55 |
| 67 | 1912-19 | MNH right margin block/8 with perfs shifted right 5mm and lt. blue shifted 1+mm right. | 20 |
| 68 | 1946 | MNH margin single with 3 1/2mm horz perf shift. | 3 |
| 69 | 2041 | MNH single with horz perf shift 8mm down. | 15 |
| 70 | 2072 | MNH single with vert perf shift 8-9mm. | 5 |
| 71 | 2072 | MNH Special Plate, Zip, & C/R block/10 with vert/diag. perf shift splitting "E" from "heart" in top row stamps. | 1.70 |
| 72 | 2114 | MNH block/4 with horz. perf shift 4mm up. | 0 |
| 73 | 2115a | MNH VF imperf coil pair. | 7.50 |
| 74 | 2203 | MNH margin pair with design change caused by horz. perfs shifted up 5-6mm. | 15 |
| 75 | 2243a | MNH block/4 with horz perf shift 5mm up. | 25 |
| 76 | Cl04a | Stunning MNH margin block/6 with vert/diag. perf shift 4 to 6 1/2mm left. | 40 |
| 77 | WX140 | MNH block/8 Christmas seals with drastic horz perf and color shifts. Very unusual! | 12 |
| 78 | 834 | Used single with vignette shifted to UR. | 10 |
| 79 | 910 | Addressed FDC with flag on stamp shifted up. | 10 |
| 80 | 918 | Addressed FDC with flag on stamp shifted up. | 10 |

81	1096	MNH margin single with drastic shift of red and medal up 8mm.					
82	1316	MNH plate block/4 with pink color shifted up 1+mm.					
83	1387-90	MNH set of four different singles with severe color shifts of 2+mm. Nice se-tenant group.	45	J96	MNH Plate block/8 with "8 cents" shifted up and left touching frame.	20	
84	1464-7	MNH plate block/4 with intaglio shifted up---animals doubled and lettering shifted into color margin.	7.50	J100	Two (2) MNH used singles. "1 dollar" value shifted left on one and to right into frame on other.	6	
85	1462	MNH single. Uphill runner.	20	C. INKING			
86	1462	MNH margin block/4 with slight red, blue, & orange color shift down and right.	35.	106	383	MNH strip/3 Schermack III coil (imperf) with incomplete inking at bottom.	15
87	1473	MNH single. Downhill runner.	12	107	503	MNH VF strip/3 with complete offset on gum side. Nice!	75
88	1473	MNH corner block/8 with slight progressive shift of colors from bottom to top stamps.	4.50	108	553	Mint NG imperf block/6---Printers waste.	55
89	1474	MNH single with green background shifted down 3mm and right 1mm. Appears as misperf.	12	109	557	Mint NG imperf horz. pair---Printers waste.	25
90	1479	MNH single with severe shift of intaglio 4mm down and 9mm to the right.	20	110	718	Mint VLH (top right stamp) plate block/4 with purple ink smear thru plate #20864.	20
91	1504	MNH single with 1mm color shift.	40	111	805	MNH block/4 with ink smear thru all stamps.	5
92	1557	MNH corner block/4 with red star shifted down 3mm into down 1 1/2mm.	2	112	807	MNH under-inked block/4.	6
93	1557	MNH corner block/4 with black shifted to right and down 1 1/2mm.	40	113	mix	Three (3) dry printed 3 cent era commems.	12
94	1557	MNH Full Sheet having intaglio shifted 1mm right and red star appears uncentered.	2	114	mix	Five (5) wet printed 3 cent era commems.	20
94A	1565-68	MNH Full Sheet 10c Uniforms. Soldiers appear doubled due to misaligned colors.	34	115	mix	Three (3) ghost plate #'s on 6 cent plate blocks.	15
95	1572-5	MNH Zip block/4 with color shifts.	10	116	1338	MNH plate block/4 with ghost plate #'s.	3
96	1725	MNH margin pair with intaglio black shifted down 6mm. Changes design radically.	10	117	1338	MNH coil pair with ghost flags.	3
97	1909a	MNH VF booklet single with background colors shifted. "A" is high; picture is fuzzy.	3	118	1452	MNH plate block/4 with plate # doubled---tagging ghost.	7.50
98	2014	MNH single with intaglio black color shifted 1mm left.	50	119	1541a	MNH plate block/4 with plate # doubled---tagging ghost.	7.50
99	2062a	MNH se-tenant block/4 with excessive ink changes. The blue and green colors are different shades. (Bureau of Engraving letter attached).	3	199A	1909a	MNH booklet single "Blue.Moon Rising" blue ink splash as written up in "Stamp Collector EFO's". Rare on this issue.	
100	2122a	Two (2) used VF booklet singles with slight and different color shifts. Difficult to find.	15	120	1928-31	MNH Full Sheet with 5 to 8mm wide orange smears thru top horz. row. Very interesting.	30
100A	C11	Six (6) MNH pos. L5 singles with restorer arrows & various vignette shifts from 1/2 to 2mm. Est. 70	20	121	2044	Used (on paper) single with yellowish green background instead of brown.	2
100B	C11	MNH pos. L1 single with perf shift left 1mm into design. Stamp 3mm too wide; blue shift 1mm right. Est. 45	50	122	C81	MNH vert. strip/10 having progressive major tagging ghost. Ghosting starts from normal at bottom.	25
100C	C11	MNH right margin single with ink splatter causing "blue rain" falling diagonally. Nice freak in person. Also, blue shift 1mm right. Est. 20	15	122A	C98	MNH strip/5 with doctor blade streak underlining "Philip Mazzei". Est. 8	
100D	C11	Two (2) MNH F left margin singles; One with vignette shifted right 2mm & up 1/2mm; other shifted left 1mm and up 2mm. Est. 35	20	123	599	MNH line pr. miscut showing 40% of bottom Pl. #20024.	7.50
100E	C11	Three (3) MNH right margin singles with various vignette shifts up to 1 1/2mm. Est. 52.50	20	124	721	MNH line pr. miscut showing 35% of bottom Pl. #21482.	12.50
100F	C11	Two (2) MNH margin singles with vignette shifted down and right. Blue into "CENTS". Est. 20	30	125	1057	Five (5) MNH Liberty miscut coil plate # strips/5.	10
100G	C11	MNH margin block/6---pos. R42-44, 47-49 with pl #'s penciled in margin. Perf shift down 2+mm and left 1+mm. Est. 54	35	126	1059	Two (2) MNH miscut coil strips/4 w/ 45-50% of pl. #'s 20767-20768 & 20768-20767.	12
100H	C81	MNH single with grounded plane. Est. 5	40	127	mix	Seven (7) different MNH miscut coil line pairs showing partial plate #'s. 805, 807, 1054, 55, 57, 1304 & 05.	8.50
101	C86	MNH ME block/10 w/ black intaglio shifted down 5 1/2mm. Est. 5	30	128	1297	MNH coil strip/3 miscut 2 1/2mm right.	9
102	C91-2	MNH margin block/4 with litho colors shifted 2mm left. Three (3) different blocks/4 having off-centered values. J89, 90, & 91.	30	129	1305E	MNH 2mm miscut and 2mm misperfed coil pair.	20
103	J89-96		35	130	mix	MNH line pairs (1595 & 1401) showing partial plate #'s at bottom.	3
				131	1906	MNH Plate # strip/5 miscut with complete Pl# 4 at top.	7.50
				132	2132	MNH Plate # strip/3 miscut with complete Pl# 2 at top.	5.50
				133	UC48-56	Three (3) mint folded and miscut Airgrams. One with color bars; another w/ plate markings. (UC48, 51, 56)	45
				134	UC50	Eight (8) copies of reversed die cut Airgrams. Cat. 25ea.	40
				135	UX27	Miscut post card with Jefferson at bottom left.	3
				136	UX66	Miscut post card splitting stamp image.	3
				E. PLATE AND TRANSFER VARIETIES			
				136A	285	MNH F Pl# pair. Double layout dots below "E.O" and 9 in "592", etc.	85
				137	372	Used VF single. DT in "OST" of "POSTAGE" and "TS" of "CENTS".	85



138 mix Super MNH Overrun Countries selection of 11 plate varieties in blocks of 4, 6, & 8. (7 different flags). Est. \$86
 138A C11 MNH vert. margin pair. French listed V19618R6. "Blue Moon" plate variety. Est. \$31

F. PAPER

139 65 Two (2) used singles having vert paper creases. 20
 140 499 Used single with nice horz paper crease. 25
 141 901 MNH margin strip/12 with vert/diag. crease. 60
 142 948 MNH Souvenir Sheet with attached paper fold. 4

G. BOOKLETS

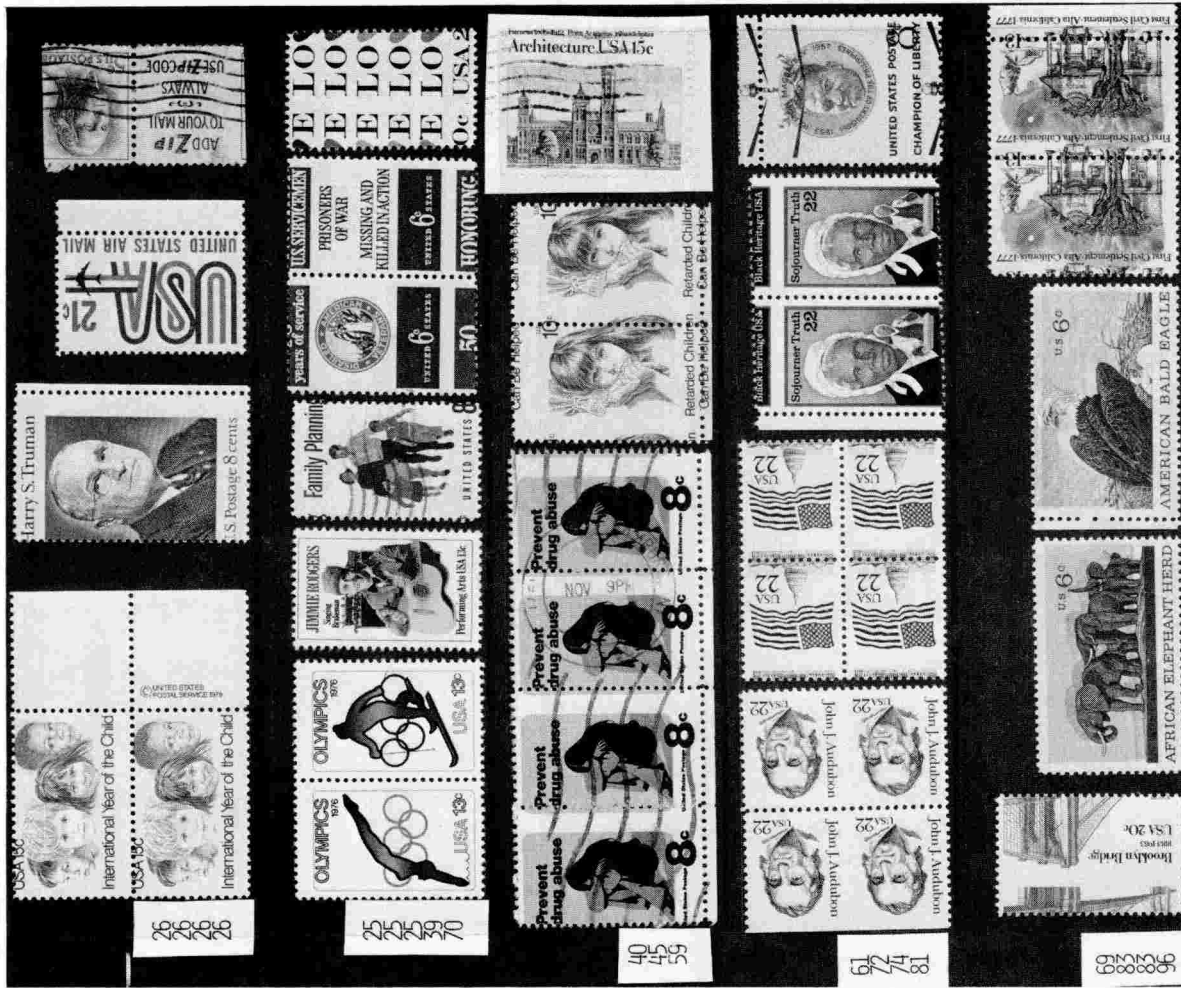
143 807a MLH miscut booklet pane 5+mm to right. 3
 144 1035a MLH miscut booklet pane 3-5mm to right. 3
 145 1036a MNH miscut booklet pane with 50% LH#26409. 5
 146 1213a MNH miscut Slogan portion of pane 8mm left. 12
 147 1213a MNH miscut booklet pane with 55% LH#28491. 5
 148 1213a MNH miscut booklet pane with 60% LH#28492. 5
 149 1278a MNH miscut booklet pane 4+mm. 4
 150 1280a MNH miscut booklet pane 4+mm. 4
 151 1284b MNH miscut pane --two denominations in right stamps. 7.50
 152 1288Bc Mint Full Booklet with 3 misperfed panes 6mm to left. 30
 153 1393a MNH miscut pane w/ 3mm of adjacent pane on top stamps. 4
 154 1318d MNH miscut pane with EE bars on wrong end of pane. 15
 155 151C MNH miscut booklet pane 3mm. 4
 156 1819a Mint Full Booklet with missing printing on cover. 60
 157 2209a Mint Full Booklet with both panes having yellow shift 1mm into right margin. Not Shown. 10
 158 C64b MNH miscut pane with 50% of LH#27271. 5
 159 C72b MNH miscut pane 2 1/2-4mm. 4
 160 C78a MNH miscut and misperfed pane. 4
 161 C79a Mint Full Booklet with both panes miscut 10mm to right and inverted in booklet. Very unusual. 8 45

H. ENTIRES

162 U71 Mint entire (tear at flap), double envelope with interior albino. 15
 163 U91 Mint entire (tear at flap), double envelope with inter or albino. 10
 164 mix Five (5) used 1916-32 era stamped envelope albinos including a "returned for postage" 1926. Not Shown 15

FOREIGN EFO's

165 322 Canada MNH inscription block/4 with right perf line dropping down. 4



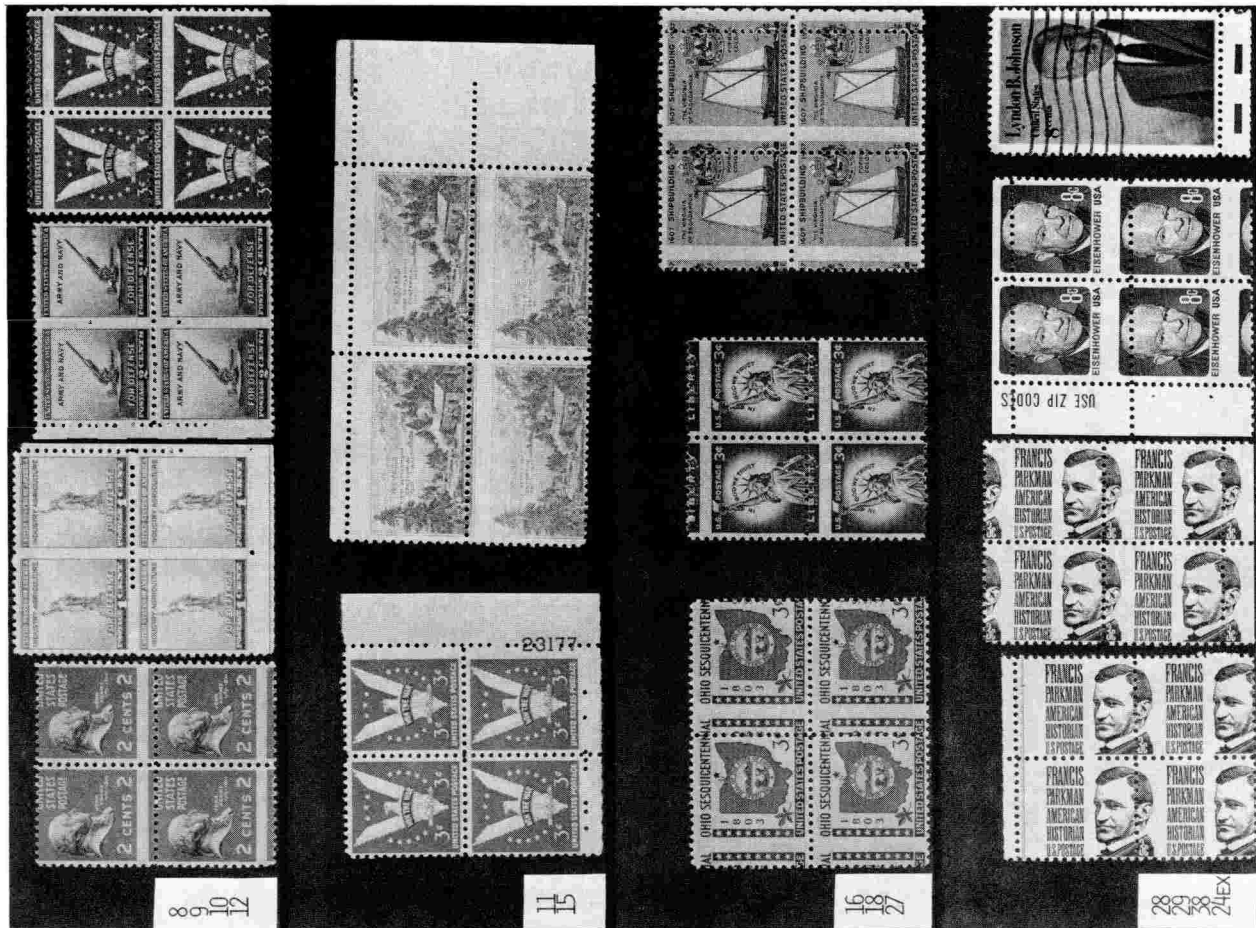
26 26 26 26

25 25 25 25 30 70

40 45 55

18 17 19

6 6 6 6 6 6

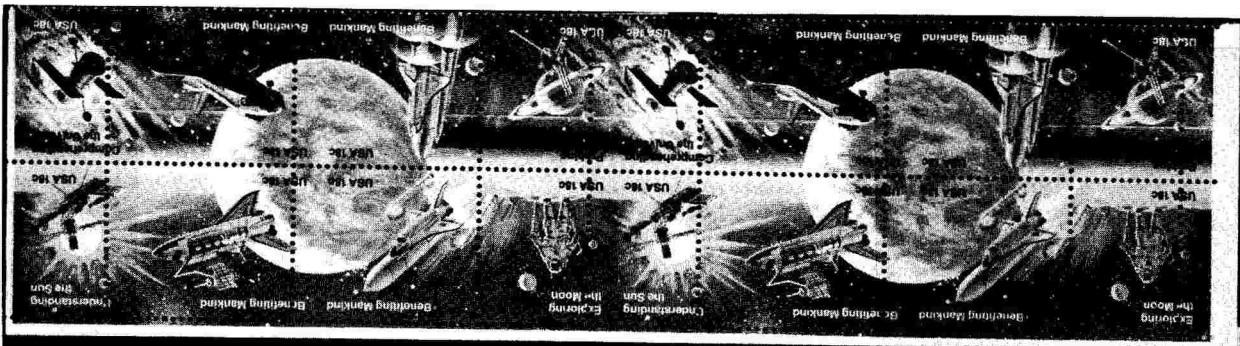


8 10 12

15

16 18 27

28 29 30 2-HEX



88



84



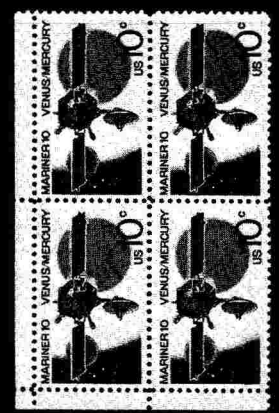
99



76



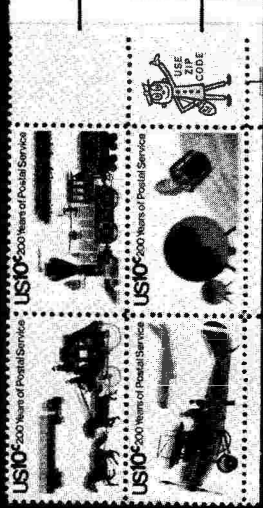
77



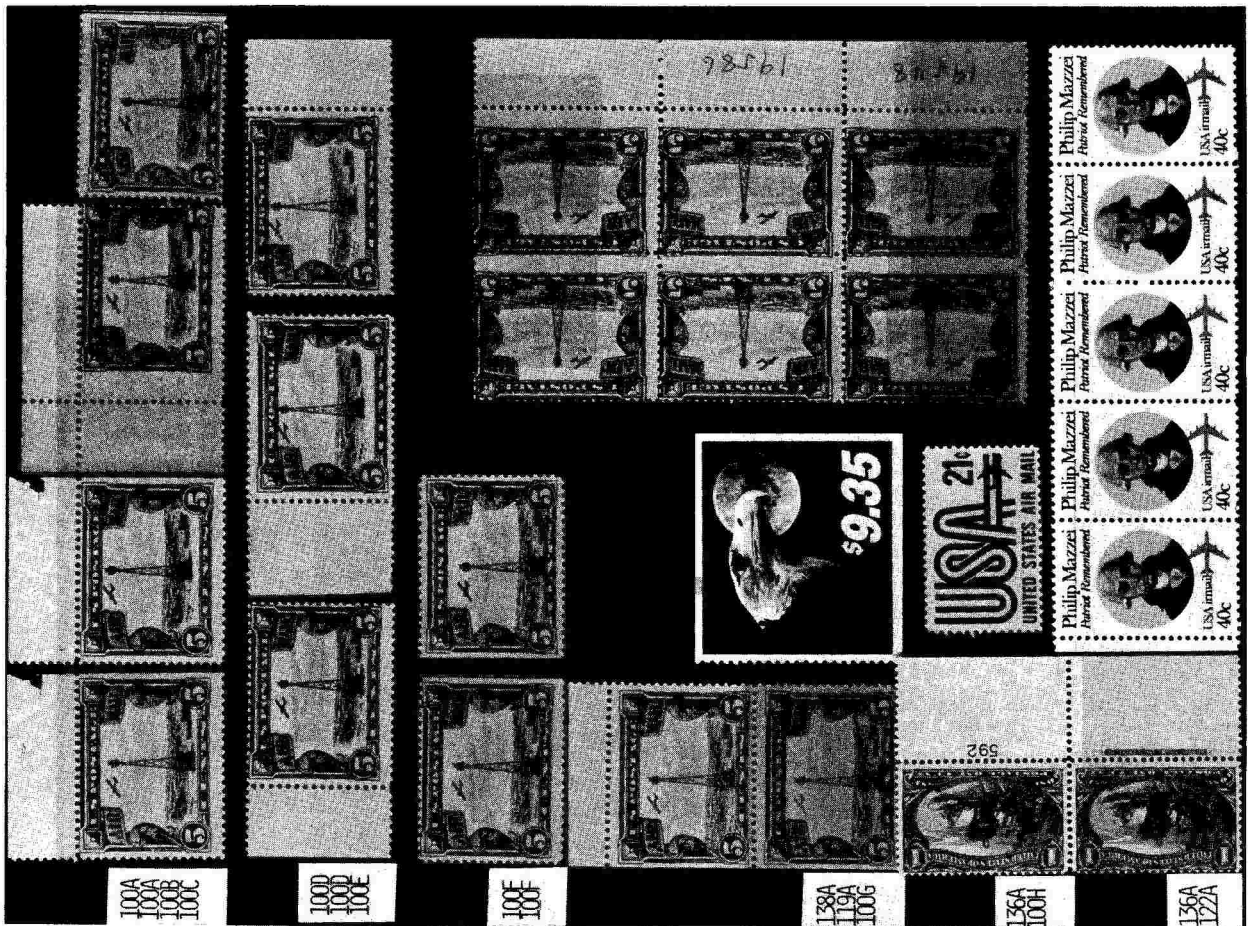
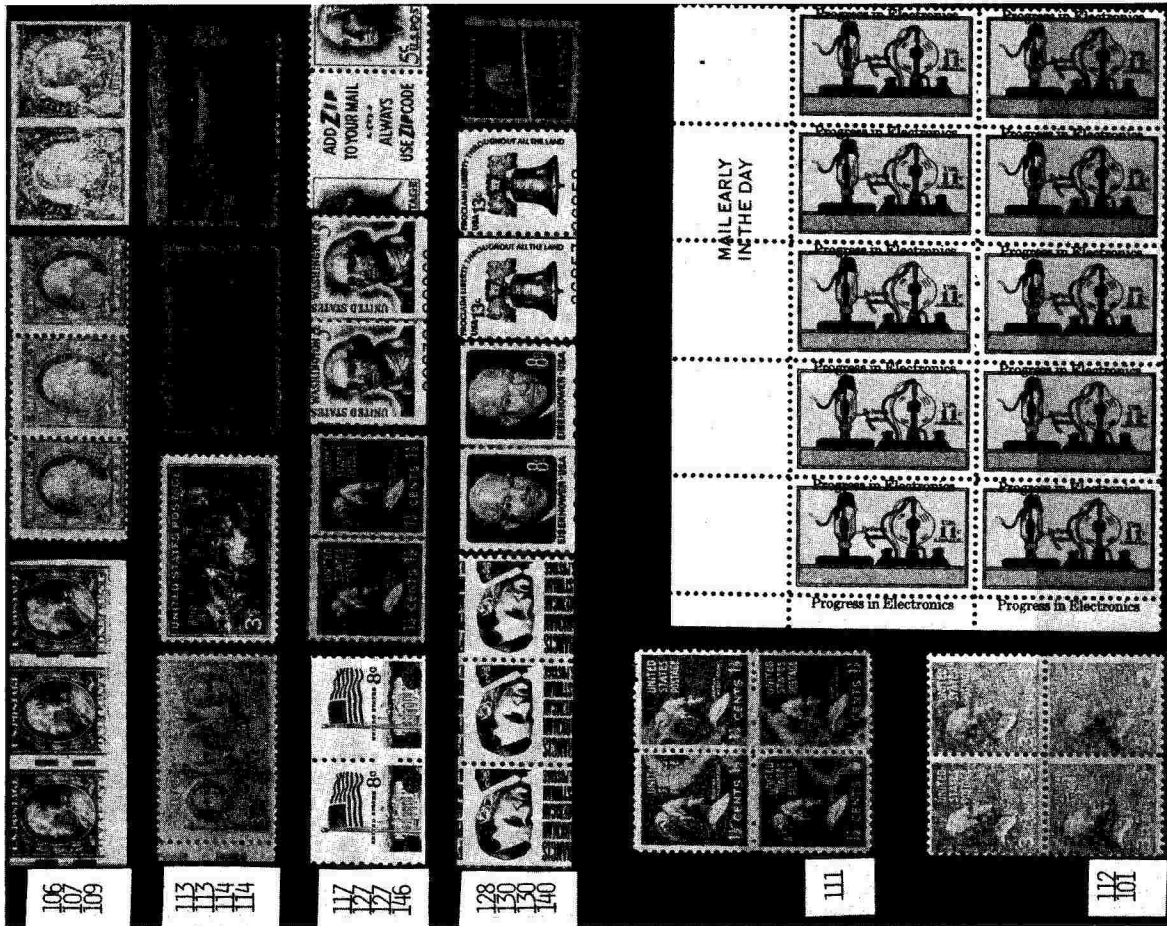
82

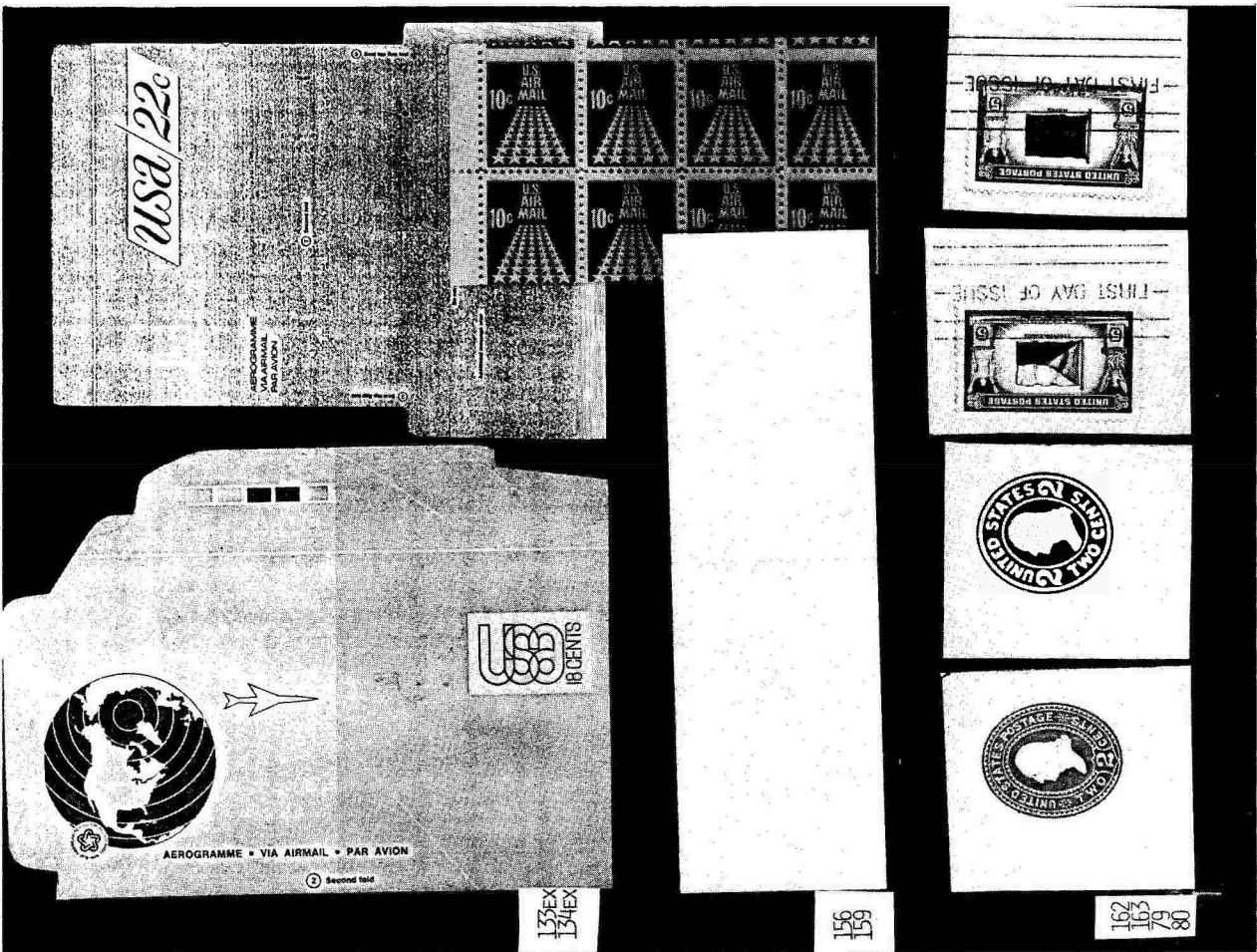


85









**EFOCC
AUCTION
BID
SHEET**

Name _____ EFOCC No. _____
 Home Address _____ Home Area & Number _____
 Phone _____
 City _____ State _____

Closing date:

November 30, 1987

No buyer's premium will be added to your winning bid.

Bids of bidders with purchase limits will be executed in the order in which they list their lots.

Send completed bid sheets to--

EFOCC Auctions
209 East 11th Ave.
Conshohocken, PA
19428

Send by Insured Mail? All postage costs will be billed to the bidder. _____

Please execute the following bids for me in this mail auction. (All bid sheets must be signed.)

Signature: _____

OFFICE
USE ONLY

Lot #	Bid	Lot #	Bid	Lot #	Bid	Lot #	Bid	Lot #	Bid

CHECK YOUR BIDS CAREFULLY!

Please limit my purchases to \$ _____ (Limits less than \$25 respectfully declined.)

<u>Consignor Name</u>	<u>Description of EFO</u>	<u>Country</u>	<u>Cat. #</u>	<u>Lot #</u>
<u>EFOCC #</u>		<u>Catalog Used (If other than Scott)</u>		
<u>Condition (circle)</u>				<u>Sale #</u>
NH	OG	<p>INSTRUCTIONS: Fill in all boxes with <u>underlined headings</u>. Leave the others blank. Then mount your lot here. For covers, multiples, or other lots, use the reverse side of the form or another sheet of paper or cardboard (better). Be sure to include this form if the lot is mounted separately (attach it to the lot, if possible).</p> <p><u>Send your lots by registered or insured mail for your protection.</u></p> <p>Extra forms are available for 4¢ each and a SASE. 10 for 1 oz., 20 for 2 oz.</p>		<u>Buyer #</u>
LH	RG			<u>Hammer</u>
H	NG			<u>Cat. Value</u>
HR	NG as issued			<u>Retail Est. and Source</u>
HH	Used			<u>Minimum Bid</u>
<u>Centering (if applicable)</u>				
XF				
VF				
F				
Average				
<u>Faults (Beyond EFO properties)</u>				
Describe:				

EFOCC Auctions, J. A. Licata, 209 E. 11th Ave., Conshohocken, PA 19423

For Auctioneer's Use

Acceptable Abbreviations and What They Mean

Bidding Increments		
	Bidding Area	Raise
\$	1.00 - 9.50	.50
	10.00 - 49.00	1.00
	50.00 - 97.50	2.50
	100.00 - 495.00	5.00
	500.00 +	10.00

Irregular bids will be reduced to the next lower level. Each lot will be sold to the highest bidder at one increment over the second highest bid unless the minimum bid is not reached. Any bid not in good faith, in the estimation of the Auction Director, may be rejected. The Auction Director reserves the right to remove any lot from the sale. A set of auction rules is available for an SASE.

CENTERING

AVE - Perforations cut design
 F - Fine, perfs clear of design
 VF - Very fine, well centered with opposite sides nearly equal
 XF - Extremely Fine, perfect centering on all sides

GUM

NH - Never Hinged
 LH - Light Hinge Mark
 H - Hinged, some gum loss
 HR - Hinge remnants, some pieces adhere to stamp
 HH - Heavy Hinge, much gum disturbance and/or heavy hinge remnant
 OG - Original Gum
 RG - Regummed
 NG - No Gum
 NG as issued - no gum on stamps, issued without gum
 NP - No Photo
 @ - at
 Bklt - Booklet
 blk - black
 BLK - Block
 btw - between

cat. - catalog value
 chng - change
 DBL - double
 dn - down
 EST - Estimate of value
 horz - horizontal
 imp - imperforate
 lf - left
 litho - lithographic printing
 M - Mint, uncanceled
 MB - Minimum Bid, lowest price at which lot will be sold
 mm - millimeter
 norm cpy - normal copy
 Pl # - Plate Number
 pr - pair
 prnt - printers
 rt - right
 SE - Natural Straight Edge
 SS - Souvenir Sheet
 Shf - Shift
 Used - Cancelled
 Vert - Vertical
 w/ - with

RETURN TO: Hotchner, P.O. Box 1125, Falls Church, VA 22041-0125
 Mailed from: EFOCC, P.O. Box 86, Marathon, FL 33050

