

The EFO Collector

Published by the EFO Collectors' Club, a nonprofit organization
Initiation fee, \$1. Annual dues, \$12, U.S. and Canada; Overseas, \$25.

Copyright 1988 by the EFO Collectors' Club.
APS Affiliate No. 103. Member COPO.

President: John M. Hotchner Editor: Howard Gates

Volume X, No. 4 (#56)

February 1988

Founded 1978

President's Message--

1988 is many things to the EFOCC, but most of all it is our tenth anniversary. We have lasted longer than many predicted, and I want to list those persons who have joined me in formal positions and given time and talent so that the club might prosper as a resource for all members:

President	Vice President	Secretary	Treasurer	EFOC Editor
Larry Weiss	Mark Sever	Stan Portnoy	Stan Portnoy	Marcel Sager
Phil Nazak	Larry Weiss	Jim McDevitt	Phil Nazak*	Lou Novacheck*
Daniel Pagter	Robert Olds		Daniel Pagter	Dan Jaramillo
	Louis Repeta*			Daniel Pagter
	Daniel Pagter			Howard Gates

*Served twice or through two or more administrations.

Continued on page 18

Contents--



Page 11

Ryan: How to Sew a Vest 4
On a Button
McAfee: The Booklet Study 8
Group Strikes Again
Vice President's Report 12



Page 4

From the Editor 2
British Beauties 3
Fascinating! 11
Tell Me More!
VOTE! Ballot on...15
EFO Post 16
What Should We 17
Call Them?
¡Es Nada, Amigo! 17
Secretary's 18
Report
Auction 19

Ruminations of a Devious Mind--

Two articles caught my eye in *Stamp Collector*. The most recent, on November 7, reported that a \$1 Lamp invert offered at a public auction during the National Postage Stamp Show sold for \$21,000 plus the buyer's 10 percent commission. Jacques C. Schiff, Jr. was the auctioneer. The earlier article, on October 17, quoted Philatelic Foundation curator Peter A. Robertson as saying, "So we expect that sooner or later someone will try to fake the '\$1 Americana inverts,' and we're ready for them when they do."

At \$21,000, you can bet your sweet bippy someone will try. Here's how a forger might produce a *plausible* invert: He can buy any number of the \$1 Rush Lamp, intaglio black omitted, Scott 1610a, for \$400 to \$500 each. He can buy the complementary color error showing just the intaglio candle holder and inscription, minus the lithographed candle and flame, Scott 1610b, for \$350 to \$450. A few bucks invested in making a photoengraving of the intaglio image, and presto! he has a plate with which to invertly overprint his Scott 1610a's with plain old dark brown ink. His only further job is to apply luminescent tagging. The paper is right, the lithography is right. Perhaps a spectral analysis of the intaglio ink would disclose a fake, but who's going to risk destroying a possibly valuable stamp to take the necessary scrapings? Or is there a non-destructive way to do it?



Note that I said, "plausible" invert. The forger's problem is that the 1610a's (at least all those that I've seen) have the the candle and flame in their normal positions on the stamps, while the candle and flame on the CIA inverts are displaced substantially to the left of their normal positions. The forger, therefore, must claim that his stamps derived from a different sheet than the CIA inverts-- and be able to prove it. Well, the job is still not impossible; there probably are full panes or large multiples of 1610a still about, although overprinting a large piece is much more difficult than doing just a single stamp. Then there's the sleight-of-hand needed to convince a postal clerk that he just sold a big block of inverts to the slick customer. And in the ensuing investigation, how does the forger circumvent the problem that the plate number on his piece differs from that on the remaining panes in the clerk's drawer?

Come to think of it, the plate number on the CIA pane was missing; did you notice? Tell me: Does the CIA possess platemaking and printing facilities for the production of false travel documents, money, and perhaps even stamps? Told you I'm a devious thinker!

--Howard Gates

ALL CONTENTS COPYRIGHT 1987 BY THE EFO COLLECTORS' CLUB. Authors and contributors have express permission to reuse any of their material elsewhere without restriction. Except for material reprinted herein, or material individually copyrighted by the author, material herein may be reprinted elsewhere as long as full credit is given to *The EFO Collector*, citing the issue date and number, and giving the address of the EFOCC secretary.

The EFO Collector is published six times yearly in even-numbered months. The deadline for any issue is the 15th of the month preceding the month of issue--e.g., May 15 for the June issue. Send editorial material directly to the editor.

Membership includes subscription to *The EFO Collector*. Application for membership, accompanied by \$13 (\$26 overseas) to cover the first year, should be sent to the Secretary.

Advertising for *The EFO Collector* will be accepted at the following rates: first insertion-- full page, \$28; half page, \$15; quarter page, \$8; classified ads, 6c per word. Discounts on subsequent insertions of the same ad: second insertion, 5%; third, 10%; fourth and subsequent, 20%. The first insertion must be fully prepaid. Deadline for ad copy: tenth of the month prior to the month of issue. Advertisements, ad payments and related inquiries should be directed to the Advertising Director.

EFOCC members are entitled to three free 35-word (excluding address) classified ("EFO POST") ads annually. These should be sent directly to the editor.

PRESIDENT
John M. Hotchner
P.O. Box 1125
Falls Church, VA 22041-0125

TREASURER and AWARDS DIRECTOR
Phillip E. Nazak, Sr.
70 Hill Ave.
Johnson City, NY 13790-2914

EFOC MAILER
E. Steven Brand
P.O. Box 86
Marathon, FL 33050

BOARD MEMBER AT LARGE
Stuart M. Krensky
Suite 9-L, 1716 Ocean Ave.
San Francisco, CA 94112

EDITOR
Howard P. Gates, Jr.
Box 955, Lake of the Woods
Locust Grove, VA 22508
Phone: 703-972-2084

PUBLICATIONS DIRECTOR
Daniel S. Pagter
P.O. Box 6394
Albany, CA 94706

VICE-PRESIDENT
Lou Repeta
76 Biltmore Ave.
Oakdale, NY 11769

SECRETARY
CWO James E. McDevitt, USCB Ret
1903 Village Rd., W.
Norwood, MA 02062-2524

ADVERTISING DIRECTOR
Dennis Ryan
120 E. St. Lawrence Ave., #213
Janesville, WI 53545

AUCTION DIRECTOR
Joseph A. Licata
209 E. 11th Ave.
Conshohocken, PA 19428

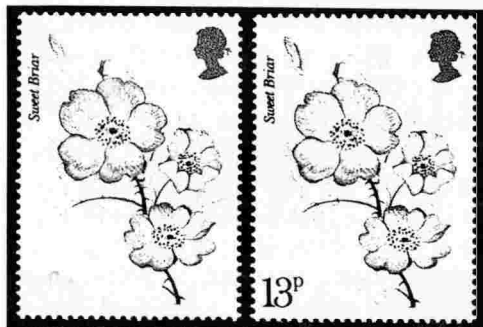
CIRCUIT DIRECTOR
Howard A. Pohl
P.O. Box 695059
Miami, FL 33269-2059

PUBLICITY DIRECTOR
Richard H. Hunt
23 Old Orchard Lane
Trumbull, CT 06611

British Beauties--

Errors on the stamps of Great Britain go back to the very first issues-- the 1d black and 2d blue of 1840, Scott 1 and 2, with their inverted watermarks. Then in 1847 the 1d red brown, issued with the lower right-hand corner letter "A" omitted from the "BA" position of plate 77 (Scott 3d), became the first major error of philately.

Among modern British errors, the 13p Sweet Briar, Scott 789 (1976), with its value absent, is the most important.



The omission was not the result of a missing color or dry print; it was caused by the failure of the printers to etch the value onto the cylinder. The omission occurred in just one position on the sheet, and was discovered before the issue date. The B.P.O. announced that all incorrect sheets had been withdrawn and destroyed; but a single commercially-used example subsequently was discovered and, a year later, a mint copy was found. Both of these stamps are in the Royal collection. One other example is now known to exist; its expected value, if it were placed on the market, is \$50,000.

A unique error is the 12p runners, Scott 924 (1980), missing the Queen's head. It is the only litho-printed stamp



known with a missing color. The issue was printed in six colors, four of which were applied during the first printing run and two, the reddish-purple and gold, during the second. The error was caused by a paper fold that caused the reddish-purple head of the runner and the gold Queen's head to be printed on the gum side of the paper. After the second print run, the fold was seen and smoothed out before perforation; the sheet thus appeared normal save for creases. A collector bought the 1980 set of four sports stamps from his local post office, and was annoyed to discover that the 12p, the low value of the set, was creased. However, he later came to realize the extent and importance of the error. The stamp sold to a collector in 1984 for just under \$10,000.

In a 1971 set depicting modern university buildings, the 3p, Scott 637, shows the Physical Sciences Building, University College of Wales, Aberystwyth. In a spectacular error version of this stamp the black color is completely missing, the dark brown is partially absent, and the building has vanished. Less than ten copies of this double color error are known. Another, less striking, variety has the black missing with the brown printing normal.



=====

The material from which this article was drawn was provided by Mr. Alan W. Benjamin, Managing Director of B. Alan, Ltd., London, specialists in errors and varieties. Further articles on British and Commonwealth EFOs will appear in future issues of The EFO Collector.

Dennis Ryan:

HOW TO SEW A VEST ON A BUTTON--

EFOCC members continually strive to add new and interesting pieces to their collections, pieces that contribute scope, depth, variety and dimension. The excitement of this hunt, however, leads to a persistent and frustrating problem: attractive-- even alluring-- stamps and covers often must be rejected ruthlessly because they do not fit precisely a collector's theme or accommodate his exact definition of his collection.

This problem may be solved by application of an important principle: Stop thinking of philately as the process of adding stamps or covers to collections much as appropriate buttons are added to a vest. Think instead of how the "vest" of the collection can be retailored to suit the fascinating and often spectacular "buttons" of EFO material one would really like to add. Often, when looked at backward, the vest and the button can enhance one another in surprising ways.

When an interesting or valuable new piece "almost," but not quite, fits the limits a collector has imposed on his material, the collector should work out specific answers to two vital questions:

"What characteristics of this piece make me want to add it to my collection?"

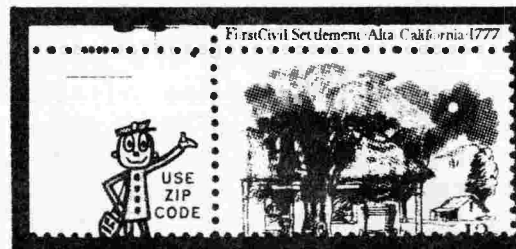
"How would the limits I have set on my material necessarily have to change were I to add this particular piece?"

Even though I exhibit perforation varieties, I have long been interested in the color misregistrations that result from a series of U.S. commemoratives of 1965 to 1984 that are both lithographed and Giori engraved. For over a year, I resisted the temptation to buy them: they were color misregistrations, not misperfs, and had no place in my work.

120 St. Lawrence Ave., #213
Janesville, WI 53545

Finally, I forced myself to identify specifically that quality of these stamps that appealed to me. Well, they looked like misperfs. Even though the stamps are perforated correctly, they appear misperfed because the perfs are out of synch with the misregistered color.

A fine example is the Alta California issue of 1977 (Scott 1725). It is a color misregistration in which the perfs frame the lithographed colors correctly. To some collectors, it qualifies as a change-of-design misperf. It has important inscribed elements missing. The stamp logically could be displayed in several different sections of an EFO collection, or used to illustrate several different effects. But its most important aspect with respect to my exhibit is that it creates the illusion of misperforation with the Giori engraved black.



Because such stamps create the illusion of misperforation, the word "illusion" became the focus of two new exhibit pages. The word highlights the heading and appears prominently in the writeup on each page. No one can miss the sense in which I accept these stamps as misperfs, nor can he miss how clearly each piece demonstrates the central idea of its page. Whatever identity these stamps may have as color misregistrations is immaterial. In fact, the words "color shift" never appear on my pages at all, to prevent diverting the viewer from my central idea. And the "vest," surprisingly, needed no retailoring at all. The two "illusion" pages from my exhibit follow:

Continued on the next page

How to Sew a Vest On a Button--

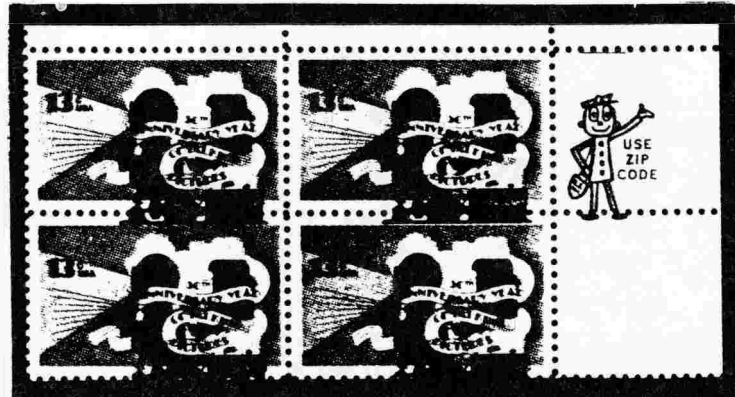
(Continued from the preceding page)

Simple misperforation--illusion of misperforation with lithographed and engraved colors

Since 1965, some commemoratives have contained both lithographed and engraved elements. Until 1984, color designs were lithographed on pre-gummed sheets; then lettering and shading were engraved by the Giori press. If the two processes misregistered, the L-perforator framed the correctly-placed one, leaving an illusion of misperforation with the other.



1972 Plate #33384



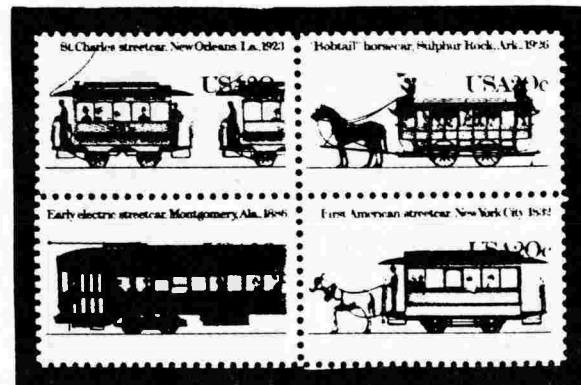
1977

Illusions of misperforation with engraving--horizontal and vertical.



1981

Left stamp undenominated



1983

Streetcars mislabelled from above, not correctly from below.

How to Sew a Vest On a Button--

(Continued from the preceding page)

Simple misperforation--illusion of misperforation with lithographed and engraved colors



1974

Illusion of two-way misperforation with engraved colors.

Illusions of misperforation with lithographed colors, horizontal and vertical.



1974



1981

Continued on the next page

How to Sew a Vest On a Button--

(Continued from the preceding page)

The "vest-button" principle can help EFO collectors in hundreds of ways to solve problems they confront every day.

For example:

- * Imperforate-between booklet stamps and imperforate coils can enlarge a collection of stamps that are imperforate horizontally or vertically.
- * Stamps with imperforate margins can enlarge a collection of marginal misperforation.
- * Misperforated revenue stamps, newspaper stamps and locals can help a collector enlarge his theme from "misperfed U.S. postage stamps" to "misperfed U.S. stamps."
- * Stamps with zig-zag perfs due to preprinting creases can enlarge a collection of crazy perfs.
- * Many collectors of misperforation include dummy booklet panes, "for testing purposes only," but fail to take advantage of perspective. Because these panes cannot help but be misperfed, they form a special case where misperforation is the norm.
- * Poorly-centered early issues can add perspective to misperfed collections. No one has yet defined the point at which wretched centering ends and

misperforation begins. Every collector can and should define this point for himself.

- * Counterfeit double, diagonal and other fancy perforations, especially those on revenue stamps, can enlarge collections of genuine double or diagonal perfs. Any display of counterfeit material in a collection implies to the viewer that material not so identified is genuine.
- * Straddle-pane stamps and cross-sheet misperforation can enlarge collections of centerline blocks and some line pairs.
- * Stamps with platable out-of-line perf patterns due to bent pins, and stamps with platable partially perforate patterns like "war perfs" can enlarge a collection of plate varieties.

The "vest-button" principle affords the collector great flexibility in organizing and displaying his stamps and covers, so that they can show themselves off and enhance each other to best advantage. I would like to hear about unusual applications that occur to you.

Cement your Philatelic Friendship With a Gift membership in the EFOCC and a Year's Subscription to The EFO Collector. Just Clip and Mail This Coupon.

To: James McDevitt, EFOCC Secretary, 1903 Village Road West, Norwood, MA 02062-2524.

I enclose my check or money order for \$13 to cover first-year membership in the EFO Collectors' Club for

Name _____

Address _____

City _____ State _____ Zip _____

Collecting interests _____

I understand that the first-year membership fee of \$13 includes \$1 initiation fee and \$10 for a year's subscription to *The EFO Collector*.

Sponsor's name (please print) _____

Earl McAfee: THE BOOKLET STUDY GROUP STRIKES AGAIN! --

Michael Holley has reported the dandy miscut pane of the 22c flag over the Capitol dome, Scott 2116a, shown in figure 1. It was a lucky late-1986 purchase at the Santa Clara postoffice, and was later sold at auction for \$20. Ordinary miscuts on Goebel's-assembled booklets appear to be scarcer than misperfs; unless large quantities of miscuts appear, the price realized by Mike will remain realistic.

A June 1987 article requested reports of lower-right plate numbers on the 3c Washington pane, Scott 720b. To date, the only response has come from Mike Perry, who submitted the 10%, lower-right #21013 shown in figure 2.

The October 1987 issue of Locomotive booklets brought a whole new series of tab markings to U.S. booklet collectors. A complete discussion of these may be found in Bob Kitson's article in the December 1987 issue of *Interleaf*, the journal of the Booklet Collectors Club. Two constant plate varieties covered in his article are pictured in figures 3 and 4. The "line through dash" has been reported only on plate #1 panes. The "short dash" (4-1/4 mm instead of 6-1/4 mm) variety occurs on both plates #1 and #2.



Figure 1. Scott 2116a, plate #1, miscut.



Figure 2. Stamp six, Scott 720b pane, 10% LR plate number.

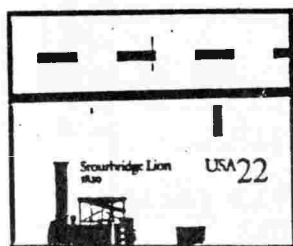


Figure 3. Line through dash.

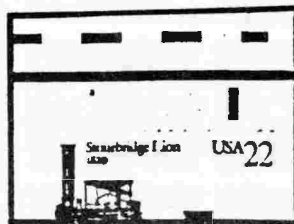


Figure 4. Short dash.

A misalignment between the intaglio and offset printings on plate #2 of the Locomotive issue was discovered by Bruce Mosher in Central Florida. On this issue, the pictures of the locomotives and the dashes across the tab were lithographed, while all other copy was intaglio printed. Figure 5 shows the 3mm left shift of all the litho colors; it can be discerned by noting that the ends of the RR rails are not aligned with the right edge of the "22", or that on stamp #2, the smokestack and the word "Charleston" collide.

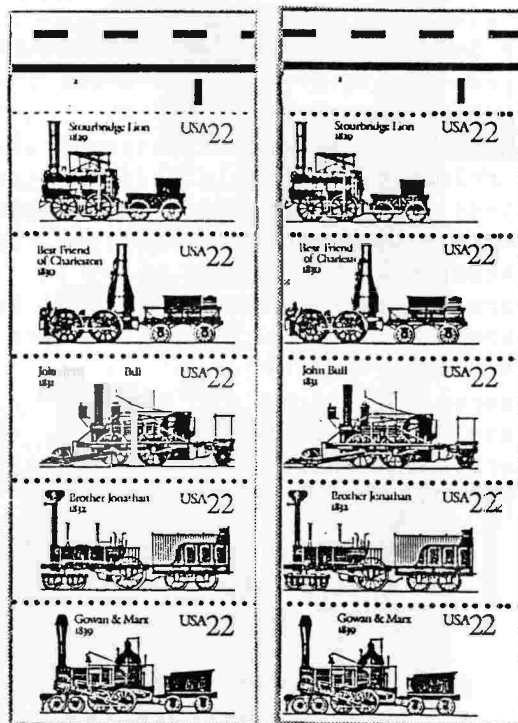


Figure 5. Normal and misaligned colors, Locomotive issue.

Two other, almost simultaneous discoveries were made in Central Florida by Bruce Mosher. The first was a 4-1/2 mm right shift of the gray background color on the Constitution booklets. The shift is not easily recognized, and is best identified by the position of the plate numbers, as shown in the diagram below.



The Booklet Study Group Strikes Again!--
 (Continued from the preceding page)

Bruce's other discovery, shown in Figure 6, was that of transposed tab markings on plate #8 panes of the 22c Seashells booklet, Scott 2121a. According to Charles Yeager, writing in *Linn's*, October 24, 1987, the Bureau of Engraving and Printing explained the transposition as the result of a paper splice's interruption of the normal perforating/cutting sequence of the Goebel assembly presses. Earlier, a similar find in the 6c/18c Scott 1893a panes was followed by the appearance of some "imperf" booklets. Thus, when Dale Enterprises listed an "imperf" Seashells booklet in its December 7 mail sale, we expected the pane to be plate #8-- but it turned out to be plate #7; it is shown in figure 7. So stocks of both plate #7 and plate #8 deserve careful attention by EFO collectors.

From the St. Louis and Delaware areas come recent reports of a small horizontal "apostrophe" below the plate number "2" on the Locomotive issue (figure 8); they apparently confirm another plate variety. Further confirmation would be welcome.

To continually publish informative articles on U.S. booklets, the Booklet Study Group needs reports from the EFOCC membership. Please let us hear about EFO booklets you have found or learned of. As this article is being written, the Flag-Fireworks booklets have just made their appearance, and can be expected to be a source of new EFO discoveries.



Figure 6. Normal and transposed markings.



Figure 7. "Imperf" Seashells pane.

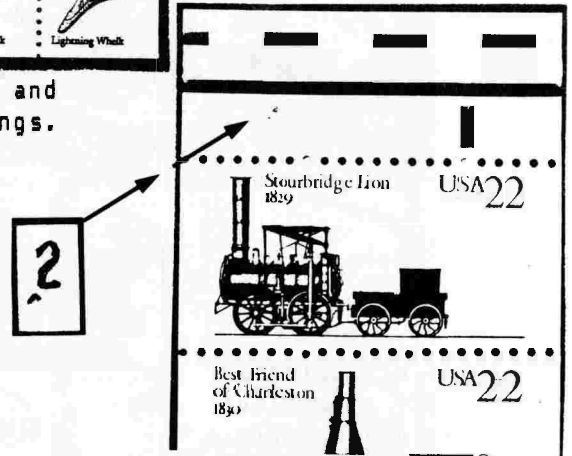



Figure 8. Locomotive issue plate variety.

Just one of many E.F.O.'s in stock



2115 22¢ Flag "Missing Cupola" \$10.00 per stamp postpaid!

See E.F.O. Price List
Send S.A.S.E.

M&M/Southwest 

*ASDA "Always Buying"

1344 W. University • Mesa, Arizona 85201
(602) 890-2924

WORLDWIDE STAMPS & POSTAL HISTORY

Schiff Auctions



"Especially for Specialists®"



If you do not get our catalogs you are missing out! Send \$8.50 (\$12.50 overseas) for a year's subscription to catalogs and prices realized or send \$1.00 (\$1.50 with prices realized) for our next auction.

Catalogs picked up at our office are complimentary.

WHAT IS A SCHIFF "ESPECIALLY FOR SPECIALISTS®" AUCTION?

It's an auction designed with YOU in mind, whether you are a buyer or a seller of U.S. or Worldwide stamps.

FUTURE AUCTION DATES
U.S. & Worldwide Stamps and Postal History
AUGUST 10-11, 1988
February 5-6, 1988
U.S. Stamp Collectors Club
New York, N.Y.
MAY 1988 -- Official COMPEX Auction
MARCH 5-26, 1988
Consignments now being accepted.

WE INVITE YOU TO CONSIGN
individual stamps, covers or collections for Public Auction or Private Treaty Sale.

WE ALSO PURCHASE OUTRIGHT!
Contact us first, describing your material. Include your address and phone numbers.



Jacques C. Schiff, Jr., inc.

195 MAIN ST.
RIDGEFIELD PARK, NJ 07660

 Licensed & Bonded Auctioneers
Established 1947 



TELEPHONE: 201-641-5566, From NYC: 662-2777

A BROCHURE DETAILING OUR SERVICES SENT UPON RECEIPT OF A STAMPED SELF-ADDRESSED LEGAL SIZE ENVELOPE.

• ESPECIALLY FOR SPECIALISTS

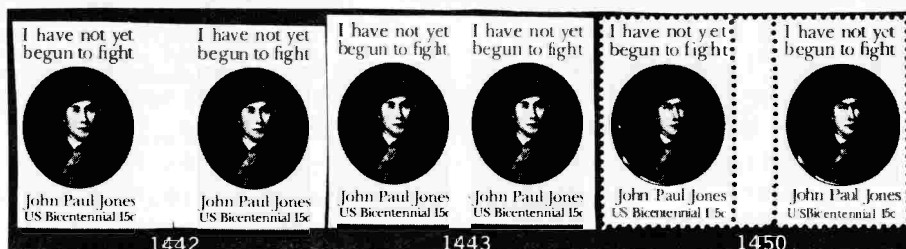
• ESPECIALLY FOR SPECIALISTS

Fascinating! Tell Me More! --

The group of 15c John Paul Jones stamps, Scott 1789, shown on this page appeared in J. and H. Stolow's November 5, 1987 Gold Medal Mail Sales catalog. Great-looking EFOs, aren't they?

Stolow did not reply to my inquiry about their origin, discovery, and provenance. Jacques Schiff, asked for publishable comment, responded cryptically: "Howard: This is a very deep-rooted story. Unless you really know the facts, the Grand Jury findings, the jail sentences and much much more, I suggest you avoid it..." Say what?!

Readers who can help solve the mystery of this emission are invited to write me at Box 955 LDW, Locust Grove, VA 22508. Please include copies of documents that support your facts.
--Howard Gates



- 1439 ★ 1789, block of 4 with crossed gutters, portrait has doubled affect, scarce, nh, vf Est. Net 300-400
- 1440 ★ 1789, blk of 4 with full horiz. gutter betw. nh, vf Est. Net 150-200
- 1441 ★ 1789, imperf. vertical pair, with full horiz. gutter, nh, vf Est. Net 250-300
- 1442 ★ 1789, impl. horiz. pair, full vertical gutter betw. gaults in gutter, o/w nh, vf Est. Net 200-250
- 1443 ★ 1789, horiz. impl. pair, nh, vf Est. Net 150-200
- 1444 ★ 1789, vertical pair w/gutter between, double oval affect, "John Paul Jones", omitted, very scarce, nh, vf Est. Net 1500-2000
- 1445 ★ 1789, vert. pair with gutter between, double portrait affect, name reads "John Paul" only, very scarce, nh, vf Est. Net 500-1000
- 1446 ★ 1789, vert. pair with full gutter between, oval has double portrait, name at bottom reads, "Jones Jo", very scarce, nh, vf Est. Net 500-1000
- 1447 ★ 1789, vert. pair, gutter between, double portrait in oval name reads "Jones John Paul", very scarce, nh, vf Est. Net 500-750

- 1448 ★ 1789, vertical pair with full horiz. gutter betw. nh, vf Est. Net 75-100
- 1449 ★ 1789, vertical pair with full horiz. gutter betw. nh, vf Est. Net 75-100
- 1450 ★ 1789, horiz. pair w/full vert. gutter, nh, vf Est. Net 75-100
- 1451 ★ 1789, horiz pair w/full vert gutter, nh, vf Est. Net 75-100
- 1452 ★ 1789, double portrait affect, "John Paul Jones" omitted, very scarce, nh, vf Est. Net 750-1000
- 1453 ★ 1789, double portrait affect, "John Paul Jones" omitted, very scarce, nh, vf Est. Net 750-1000
- 1454 ★ 1789, doubled portrait effect and "Jones" omitted, very scarce, nh, vf Est. Net 250-500
- 1455 ★ 1789, "John Paul Jones" misplaced as well as double impression of black color, nh, vf Est. Net 150-200
- 1456 ★ 1789, double impression in portrait, nh, vf Est. Net 75-100
- 1457 ★ 1789, double impression in portrait, nh, vf Est. Net 75-100
- 1458 ★ 1789, double impression in portrait, nh, vf Est. Net 75-100

Vice President's Report: EFOCC Committees and Activities --

COMMITTEES

Robert E. Manning, Jr. award

This committee selects the best article published in *The EFO Collector* during the year (August to June). The award is one year's free dues and \$25 cash paid by the EFOCC awards fund. The 1987 committee of John Hotchner (Chairman), Earl McAfee (1985 winner) and Howard Gates (1986 winner) chose Francis C. Pogue as the winner for 1987. Mr. Pogue will serve with Mr. McAfee (Chairman) and Mr. Gates to select the 1988 awardee.

Awards Committee

Philip E. Nazak, Sr., 70 Hill Ave., Johnson City, NY 13790-2914, is Chairman. A "Certificate of Appreciation" was established to acknowledge distinguished deeds of service to the EFOCC or the philatelic community. The award is open to any person or organization that supports the hobby of philately. Nominations are accepted from the membership and should be supported by a record of the deeds and services. The award is presented no more than twice each year. A "Ribbon Award" is given for the best exhibit that includes a substantial percentage of EFO material. The award is available to all national philatelic shows in which there are at least three exhibits containing at least 25% EFO material. Exhibit or awards chairmen are encouraged to obtain the award criteria from the Awards Committee Chairman.

Nominating Committee

This committee provides a list of candidates for balloting by the general membership for the offices of President, Vice President, Secretary, and Treasurer. The committee selecting nominees for the 1988-1989 tenure comprises Earl McAfee, Chairman (Box 3266, Champaign, IL 61821); Francis C. Pogue; and Tim Lindemuth.

ACTIVITIES

The EFO Collector

This journal of the EFOCC is published six times each year. Its editor is Howard Gates, 615 Lakeview Parkway, Box 955 Lake of the Woods, Locust Grove, VA 22508. *The EFO Collector* contains articles about EFOs, various features, a collectors' exchange, news about exhibitions and club activities, and the Club's regular mail auction. The content depends on members' contributions of articles and news stories. Your participation is welcomed.

Mail Auction

Joseph A. Licata, 209 East 11th Ave., Conshohocken, PA 19428, is the Director. A new auction is published in each issue of *The EFO Collector*, and contains EFO material either donated or consigned for sale by members. Non-members may bid for lots. The Auction Director will provide a set of auction rules on receipt of an SASE.

EFO Mail Circuit

Circuit Director Howard A. Pohl, P.O. Box 695059, Miami, FL 33269-2059, coordinates the EFO mail sales circuit for distribution to members expressing a wish to receive it. The circuit content is material supplied by members; its availability is dependent upon this supply. Material is urgently needed; please contact Pohl to obtain sales booklets and the system rules.

Exhibit Critique Service

John M. Hotchner, P.O. Box 1125, Falls Church, VA 22041, is Director. One or more members of a committee composed of knowledgeable exhibitors and judges will review a photocopy of a members exhibit and offer suggestions to improve it. There is no cost to participants other than postage.

Continued on the next page

Back Issues of *The EFO Collector* --
Volume I, \$7; Volumes III and V, each \$6; Volumes II, IV, VI,
VII, VIII and IX, each \$9. All nine volumes, \$57.
Order from EFOCC Publications, P.O. Box 6394, Albany, CA 94706

Vice President's Report: EFOCC Committees and Activities--
(Continued from the preceding page)

EFOCC Regional Meetings

STaMpsHOW 87 (APS Annual Convention)-- A meeting of the EFOCC was held August 22 in conjunction with the 101st annual convention of the American Philatelic Society in Boston. Jim McDevitt, John Connaughton and Parker Bailey, Jr. organized the meeting, which was attended by 22 people. A summary of this lively session was reported in the October 1987 issue of *The EFO Collector*.

VAPEX 87-- A Saturday Dutch Treat Breakfast has been held for five consecutive years at Virginia Beach, Virginia in conjunction with the Virginia Philatelic Society exhibition. This activity, sparked by President Hotchner, promotes good fellowship and EFO collecting. VAPEX 88 will host the sixth annual get-together.

WESTPEX 89 Convention-- Coordination of preparations for the EFO Collectors' Club's first national meeting in association with a major national show has started. Exhibits, speakers and ideas for activities are solicited by President John Hotchner, Vice-president Lou Repeta, and past presidents Dan Pagter and Phil Nazak. Come and share our enthusiasm and commitment to make the EFOCC's participation in this exciting philatelic event a resounding success. It is a great opportunity to get our Club and its interests before the public, and to disseminate information and recruit new members.

Advertising Director

Dennis Ryan, 120 St. Lawrence Ave., #213, Janesville, WI 53545 solicits and receives ad copy for inclusion in *The*

EFO Collector. Contact Dennis to obtain a fee schedule and answers to ad-related questions.

Publicity

Richard H. Hunt, 23 Old Orchard Lane, Trumbull, CT 06611, the Director, handles the preparation and distribution of press releases on all aspects of EFOCC operations, with the objective of keeping the EFOCC before the public and the recruitment of new members.

Indexing The EFO Collector

Tim Lindemuth, 500 Dennison Ave., Manhattan, KS 66502, indexes each new issue for insertion into the APS Research Library Periodical System. Tim is also working on an index of back issues for use by EFOCC members.

Publications and Back Issues

Director Daniel S. Pagter, P.O. Box 6394, Albany, CA 94706-0394 responds to paid requests for back issues of *The EFO Collector*, the *McIndoo Index* and other publications the EFOCC may sponsor.

Booklet Study Group

This active group is being directed by Earl K. McAfee, Box 3266, Champaign, IL 61821. Interested individuals are invited to participate.

Other study groups can be formed whenever interest exists. They are an excellent means of focusing on the discoveries and existing material in specialized areas and of developing the interests of the casual collector. Anyone who would like to start a study group is encouraged to write to the President for help. --Lou Repeta

**Election Ballot and Biographical Sketches of the
Nominating Committee's Candidates for EFOCC Offices--**

For Presidents: *Louis E. Repeta.*

Born in 1931, he is a graduate mechanical engineer and has an M.S. in Organizational Behavior. He served with the U.S. Army in Korea during 1953. Lou and his wife, Rosemary, live in Oakdale, Long Island, New York. His interest in stamp collecting began in 1941, but ebbed and flowed until 1971. In that year he became an enthusiastic student of U.S. plate varieties and the 3c regular issue, series of 1932, the "Stuart" Washington stamps. The "Stuart" collection has won many medals including the Apfelbaum award, the SPA research award, the APS medal for excellence (1900-1940), and the BIA President's Award. Lou is a member of the American Philatelic Society, the Bureau Issues Association (of which he is a member of the Board of Governors), the Collectors Club of New York, and the Perfins Club. He has served two terms as Vice President of the EFOCC.

For Vice Presidents: *Scott A. Shaulis.*

Scott has been a stamp collector since the age of six, and has a special interest in EFOs. He actively pursues Pennsylvania postal history, and collects mint and used U.S. stamps, U.S. precancels, and all forms of precanceled postal stationery (including Mailer's Precancel Postmarks). He is a past Auction Director of the EFOCC and is currently Vice President of the Western Pennsylvania Precancel Society and Historian of the Mailer's Precancel Postmark Club. Scott has contributed articles to club newsletters, the *American Philatelic Congress Book*, and *Stamp Collector*. He is employed by the DeVilbiss Health Care Division in Somerset, PA, and is a member of the Somerset Volunteer Fire Department.

For Treasurers: *Phillip E. Nazak, Sr.*

Phil has collected U.S. stamps for over 30 years, specializing in plate-number and Mr. Zip singles. He collects EFOs, U.S. Scott 1331-1332, and U.S. Frigate "Constitution" cruise covers of 1931-1934. He is a charter member of the EFOCC and has held the positions of President (1982-1984) and Treasurer (1979-1982 and 1984-1988). He is coordinator for the USPS's Benjamin Franklin Stamp Clubs for the Binghamton, NY MSC area, a member of the APS and USCS, and was President of the Johnson City, NY Stamp Club during 1980-1983. He is 47 years old, married, has six children and has worked for the USPS for 23 years as a Supervisor and Analyst, Address Information Systems. He is also Master Chief Postal Clerk in the U.S. Naval Reserve.

For Secretary: *Jim McDevitt.*

Jim is 54 years old, married, and has four children, the youngest of whom is 15. He retired from the U.S. Coast Guard after 28 years service and currently works as a fire department dispatcher. He has served as EFOCC Secretary during 1986-1988. Jim started collecting at the age of ten, and was introduced to EFOs in 1966. Since then, he has maintained a sheet of information on each Scott-listed error, a file card on each other variety, and a file of EFO clippings from the philatelic press and auction catalogs. For ten years he has been Secretary of the Chief Warrant Officers' Association, U.S. Coast Guard (New England district).

In accordance with the EFOCC Constitution, Article VIIIC, election will be by majority of the votes cast. Write-ins on the ballot form will be considered to have the full agreement of the Nominating Committee.

BALLOT FOR ELECTION OF EFOCC OFFICERS FOR 1988-1990.

Please return your ballot, POSTMARKED BEFORE APRIL 1, 1988, to John M. Hotchner, P.O. Box 1125, Falls Church, VA 22041-1125.

President: Louis Repeta ____ or write-in:_____

Vice President: Scott Shaulis ____ or write-in:_____

Treasurer: Phillip Nazak, Sr. ____ or write-in:_____

Secretary: Jim McDevitt ____ or write-in:_____

At Large: Mary McIndoo ____ or write-in:_____

EFO POST--

EFO STAMPS ON APPROVAL: Request a selection and I will donate a freak valued at \$5 to the EFO Collectors' Club and offer you \$5 credit toward your next purchase. Ag, P.O. Box 1, Medford, NJ 08055.

BLUE CAPITOL-- 2115: Used on piece, \$10, or will trade for red Capitol. Ed Westen, Rt. 1 Box 233, Blanchard, MI 49130.

FREE: EFO USA Christmas Seal pricelist. Most USA Christmas Seals are available in imperforate NH pairs for 20c. Recent imperforate sheets, \$2-\$4. I also have USA Christmas Seal gutter pairs. Free, fully-illustrated pricelist. John Denune, 234 East Broadway, Granville, OH 43023.

FOR SALE: Flag over Capitol coil, Scott 2115, black ink tinge on red stripes, notably bottom stripe. Singles, 44c, multiples at twice face. Plate #2 strip of five with all stamps tinged, \$7.50. Proceeds go to EFOCC. SASE to Richard H. Hunt, 23 Old Orchard Lane, Trumbull, CT 06611.

WANTED: Any EFO of Scott 1928-1931. Send photo or description to Richard Hunt, 23 Old Orchard Lane, Trumbull, CT 06611.

WILL BUY OR TRADE: Back of the book EFOs-- mint, used, or on cover examples of Scott E, F, FA, JQ, OX, Q, QE and QI. Also want Q, JQ, QE, QI and OX normal covers. Dan Pagter, P.O. Box 6394, Albany, CA 94706-0394.

DOUBLE TRANSFERS WANTED: Scott 557 5c Roosevelt 15571 UL B6 (also same DT on Canal Zone B6) and Scott 569 30c Bison 16065 UR 52. Send or write with asking price. All other DTs wanted as well. Ralph E. Trimble, P.O. Box 532, Stn. A, Scarborough, Ontario, Canada M1K 5C3.

FOR SALE: Scott 542 MNH w/4-5mm horiz. misperf-- single, \$7.50; pairs and blocks prorated. Scarce issue for freaks. MISSING COLOR: Scott 1551 w/buff omitted-- single \$50 w/copy of APS certificate for complete sheet. P&I \$1.35 extra. Abe Marlowe, 4025 Nob Hill Rd., Sunrise, FL 33351.

WANTED: Just one booklet Scott 1909. Complete rolls of 1891, 1743, 1820, 1947 and 2112. What is your price? C. Hardin, Box 1304, Lexington, KY 40590.

FOR SALE: Misperfs, colors missing, imperfs, offsets. Also regular issue, Roman coins, and foreign banknotes. Ted Yonkers, 6118 Edith, NE, #167, Albuquerque, NM 87107.

WANTED: 1934 Christmas seal EFOs, essays, proofs, etc. John Hotchner, P.O. Box 1125, Falls Church, VA 22041-0125.

CANADA COIL IMPERFORATE ERRORS

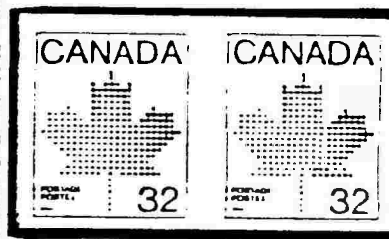


806a Imperf. Pair
VFNH

Scott C.S. Cat. \$200
OUR PRICE: U.S.\$115



952a Imperf. Pair VFNH
OUR PRICE: U.S.\$115



951a Imperf. Pair
VFNH

Scott C.S. Cat. \$200
OUR PRICE: U.S.\$150

SPECIAL . . . Our price for all 3 pairs:
ONLY U.S.\$299!

Strips of 4 are available pro rata

* Colour brochures Current price list of Canadian stamps featuring varieties and errors Free on Request *



SASKATOONSTAMP CENTRE

Call Us Toll Free 1-800-667-6900

P.O. Box 1870, Saskatoon, SK, Canada S7K 3S2



Secretary's Report--

We welcome these new members and their special philatelic interests:

- 619- B. Gruner, 4 Edith Ct., Oldbridge, NJ 08857; *Missing color; perf and color shifts.*
 620- R.J. Stark, 18 College Dr., Stony Brook, NY 11790; *Author.*
 621- Tom Poch, 116 Firlawn, Elma, WA 98541.
 622- G.I. McNabb, 24 Fairfield Rd., Fairfield, NJ 07006; *Dealer.*
 623- B. Alan, Ltd., 184 Portland Rd., London, England SE25 4QB; *Dealer.*
 624- D.R. Ertzberger, P.O. Box 16361, Alexandria, VA 22302; *Transportation coils.*
 625- Packard Stamp, P.O. Box 1060, Midlothian, VA 23113; *Dealer.*
 626- C. Girvin, P.O. Box 7062, Burbank, CA 91510.
 627- C.H. Stagner, 8565 Pembroke Dr., Tucson, AZ 85715; *Machin heads; German buildings.*
 628- Dr. T.W. Sale, 4304 Chesapeake Ave., Hampton, VA 23669.
 629- J. Jennings, 1216 W. Braddock Rd., Alexandria, VA 22302; *J88 to J104.*
 630- R.W. Gesell, P.O. Box 8248, Ann Arbor, MI 48107; *Early pf's; world inverts, especially China.*
 631- H.A. Klouser, RD2, Box 137, Hegins, PA 17938.
 632- Dr. Lloyd Money, 904 21st St., Hermosa Beach, CA 90254.
 633- Dr. John Ordway, Pine Ledge Road, Rte. 3, Box 199B, Bangor, ME 04401.
 634- D.T. Drought, 8607 N. 57th St., Brown Deer, WI 53233.

A big thank-you for membership recruiting to: The American Philatelic Society; John Hotchner; M. Aaronson; Marvin Frey.

Membership as of January 4, 1988: 308.

--Jim McDevitt

Price Correction,
Datz's U.S. Errors--

Stephen Datz's catalog, *U.S. Errors*, is priced at \$9.95 to EFOCC members, a dollar more than stated in the December issue of *The EFO Collector*. That still beats the price to the public by a buck. You can order the 1988 edition from the General Philatelic Corp., P.O. Box 402, Loveland, CO 80539. For the special price, mention your EFOCC membership number.

President's Message--

(continued from page 1)

<i>Auction Director</i>	<i>Publicity Chairman</i>
Larry Smulczenski	Robert Manning, Jr.*
Daniel S. Pagter*	E. Steven Brand
Scott Shaulis*	Richard Hunt
Joseph Licata	

<i>Ad Director</i>	<i>EFOC Mailer</i>
T. Edward Westen	Clarence Gillespie
David Oatman	E. Steven Brand*
Dennis Ryan	

<i>Back Issues</i>	<i>Sales Circuit</i>
<i>Chairman</i>	<i>Director</i>
Stuart Kremsky	Howard Pohl*

Publications Director
Daniel Pagter

There are many ways to support the club. If you can't spare the time to be active as an officer or activity chairman, I'd like to ask that you send at least one donation lot to EFOCC's Auction Director so that we can build some reserve into our treasury. We are running slightly below expenses now and will be raising dues to \$12 effective with the 1988-1989 year. We need to have additional support to assure our future, and donation lots are the easiest and least painful way to arrange that. I appeal to you to help.

--John M. Hotchner

Auction #35-- Closing date: March 31, 1988

5% Buyers Premium

UNITED STATES

A. PERFORATIONS

LOT#	SCOTT	MIN BID
1	65	Used top margin single (w/ imprint) 4mm misperf to right. 20
2	65	Used horz strip/3 with vert double perfs. Some toning. 20
3	222a	Mint HR imperf pair. Cat 250 85
4	529	Mint LH Type III margin block/4 with split plate # (normal) number itself is "scarce" per Durland. 25
5	530	Mint NG block/9 with 5mm misperf thru "S" of "US" (offset type IV). (Few perf seps) 20
6	685	Mint LH FULL SHEET of 100; 6th thru 11th rows of perfs into stamps. Two rows of perfs within 9th vert row. (Some missing margin and perf seps). 75
7	804	MNH #1 of LR pane; 5mm misperf left. 15
8	807	MNH corner block/4 with gutter snipe. 4
9	807	MNH FULL SHEET of 100 with perfs shifted down 7mm. 250
10	823	MNH margin pair with missing perfs between. 4
11	901	Two MNH pairs. One almost imperf between; other with blind perfs down right margin. 5
12	901	MNH margin block/4. Top pair imperf between; bottom pair with one perf between. 30
13	947	MNH margin single w/ vert perfs shifted 6+mm. 10
14	968	MNH pair with horz perfs up 5mm above "United States Postage". 15
15	1024	MNH FULL PANE of very light printed stamps. Last two vert rows of perfs slightly into stamps (includes full normal pane). 75
16	1035	MNH plate block/4 with horz perfs down 4mm. 18
17	1095	MNH margin block/4 with perf shift left 2 1/2mm. 7.50
18	1203	MNH horz pair with yellow shift 2mm left and perfs centered on yellow. (includes normal copy) 12.50
19	1280	Mint FULL SHEET with misperf 3mm left inside stamps. 60
20	1286	MNH strip/4 having 2 outside rows of perfs shifted. Stamp #2 is 1 1/2 stamp design wide. 22
21	1286	SAME as above, but without gum. 8
22	1290	MNH plate block/4 with horz misperf 3mm thru name. 20
23	1338	MNH LR #100 stamp from UL pane; cross sheet misperf of 10mm. 20
24	1345-54	MNH strip/20 with vert/diag perfs into stamps at bottom and gutter snipe at lower right. 20
25	1393d	MNH single with 3mm misperf. 3
26	1394	MNH bottom margin single misperf and major tagging ghost. 7.50
27	1394	MNH ME block with horz perfs shifted up just under Ike's nose. 45
28	1396	MNH margin single with vert misperf to left 3mm and up 3mm. White strip across top of stamp. 7.50
29	1432	MNH Zip block/4 with horz perf shift of 2mm and slight diagonal. 17.50
30	1444	MNH ME block/4 w/ horz perfs on diagonal & up. 30
31	1485	MNH corner block/4 with horz perfs shifted down 9mm (on diagonal) and gutter perfs thru top of stamps. (Few perf seps top center) 25
32	1502	MNH pair with blind perfs between. 12
33	MIX	Three MNH Christmas misperfed singles; 1472, 1507 and 1580. 20
34	1510	MNH UL #1 single from UR pane; cross sheet misperf. 15
35	1520a	MNH imperf pair. Cat 40 20
36	1525	MNH XF gutter snipe. Mr. Zip points to error. 15
37	1549	MNH margin pair with 2-way misperf. 20
38	1576	Two MNH singles with 2-way misperfs. 20
39	1592	MNH misperfed strip/3 w/ oversized middle stamp. 10

40	1593	MNH ME block/6 with vert perfs shifted left w/ "Mail Early In The Day" inside stamp. 17.50
41	1596	MNH UL corner block/4 w/ perfs shifted 4mm rt. 20
42	1605	MNH margin single misperf 2mm up. 5
43	1615cf	MNH imperf, miscut pair. EE bars at top. 25
44	1706	MNH margin single with vert/diag misperf. 5
45	1725	MNH margin single with 6mm perf shift right. 8
46	1726	MNH Zip block/4 with horz perfs shifted down thru heads of standing figures. 35
47	1727	MNH margin copy single with 7 1/2mm perf shift. 8
48	1727	MNH single with 7+mm perf shift. 12
49	1734	MNH right margin misperf 6mm left. 12.50
50	1734	MNH block/4 with vert misperf splitting "SA". 15
51	1735	MNH corner block/4 with horz/diag perf shift thru head of eagle. 15
52	1770	MNH pr w/ vert perfs shifted thru RPK's nose. 10
53	1823	Two MNH misperfs including design change margin copy and horz perfs thru nose. 25
54	1833	MNH single with 3mm horz perf shift up. 3
55	1854	Two MNH singles with 6 and 8mm perf shifts. 10
56	1856	MNH single with 10mm horz perf shift. 8
57	1856	Two MNH singles with horz/diag misperfs. 10
58	1856	MNH horz pair imperf between. 4.50
59	1867	MNH single with 4+mm perf shift. 6
60	1894	MNH single with 8+mm perf shift. 9
61	1894	Two covers with misperfed stamps. 7.50
62	1900	Precancelled single on paper w/ 50% vert misperf. 5
63	1900	MNH PN-3#2 with slight perf shift left. 7.50
64	1912-19	MNH Nice top strip/16 with vert perf shift 5mm right. Lt blue shift 1+mm right. 48
65	1934	MNH single with 7+mm perf shift. 10
66	1947	MNH "C" coil pair with 50% misperf. 12
67	2015	MNH single with near 50% horz perf shift. 15
68	2015	MNH horz pr w/ top margin design change misperf. 15
69	2054	MNH single with color perf shift. 15
70	2072	MNH single with 5mm perf shift right. 6
71	2072	MNH wide single with perf shift right 13-15mm. 15
72	2073	MNH 2 1/2 stamps with horz perfs halfway into stamps and gutter in bottom stamp. 45
73	2073	MNH block/4 with horz perfs 5mm up. 16
74	2076-79	MNH margin setenant w/ striking horz/diag perfs. 28
75	2090	MNH margin CR single with misperf down center. 15
76	2092	MNH single with vert misperf down center. 20
77	2112	MNH coil pair misperf 4mm left. 3
78	2114	MNH block/4 with misperf 6mm up. 13
79	2114	MNH margin block/4 with horz perfs shifted up 20mm. Gutter thru flags of bottom stamps. 65
80	2115a	MNH imperf coil pair. 6
81	2115	MNH misperfed coil pair 5+mm left. 7
82	2123	MNH VF PN-8 #2 w/ missing perf on plate # stamp. 10
83	2144	MNH single with near 50% vert perf shift. 25
84	2154	MNH single with 6mm horz perf shift. 8
85	2155-8	MNH margin setenant block/4 with spectacular horz/diag perf shift. 40
86	2248	MNH single with 5mm perf shift down. 6
87	2250	MNH block/4 with 3mm perf shift up. 20
88	C64b	Used block/4 from end of booklet pane with 9mm misperf right. Very unusual piece. 25
89	C83a	MNH VF imperf coil pair. Cat 80 40
90	C100-04	MNH setenant block/4 with imperf margin. 50
91	E21	MNH single with 3mm horz perf shift up. Includes normal copy. Both copies have different gum. 20
92	J80	MNH single with 5mm horz perf shift. 5
93	R43	Used single with double vert perfs. 4
94	R135	Mint NG single with freak perfs. 4

B. COLOR SHEETS

95	547	Used Ave single with vignette shifted up 1 1/2mm into frame. LL corner fold. Cat 40 20
96	620	Mint LH VF single with vignette shifted up 1mm into frame. 8
97	702	MNH single with red cross shift. 2
98	702	MNH block/4 with red cross shifted to LR on shoulder of nurse. 14
99	916	FD cacheted cover with flag on stamp up 1 1/2mm. 10

		C. INKING					
100	1041	MNH margin block/4 with blue shifted 1 1/2mm right. One of the worst misregistrations of this issue.	32	145	503	MNH strip/3 with complete offset on gum side.	75
101	1321	MNH single with orange and black up and left 2mm—what a mess.	15	146	557	Mint VF NG imperf pair printer's waste.	25
102	1331-2	MNH pair with red color shift.	10	147	583	Mint VF LH imperf pair printer's waste.	18
103	1447	MNH margin single with red stripes of flag shifted 2mm left.	6	148	583	MNH plate block #18007 with severe wiping smears on all 4 stamps. Cat 30	18
104	1468	MNH double tailed cat.	2.50	149	586	Mint NG block/4 printer's waste.	40
105	1473	MNH Zip block/4 with slight red, blue and orange colors shifted down and right.	6	150	724	Mint HR margin block/6 with smeared offset at right side.	2
106	1474	MNH margin single with intaglio colors shifted 1 1/2mm to right.	10	151	807	MNH margin single. Overinked.	5
107	1478	MNH single with colors shifted.	9	152	937	MNH FULL SHEET with six ghost plate #'s up and down margin.	25
108	1478	MNH single with drastic green background shift.	14	153	972	MNH plate block/6 with wet printing.	18
109	1480-3	MNH margin setenant block/4 with red and grey shifted up 2+mm.	7.50	154	975	MNH strip/8 with light to dark printing.	15
110	MDX	Ten assorted mint and used EFO's. Retail 20	10	155	1067	MNH FULL SHEET with wet printed top six rows, dry printed bottom three rows.	65
111	MDX	Sixteen assorted mint & used EFO's. Retail 35+	15	156	1272	MNH corner block/4 with ink smear thru middle of bottom stamps.	2
112	15604	MNH margin block/4 w/ brown color shift 1mm down.	7.50	157	1338G	Four (4) MNH coil line series pairs with 13 to 25% of line.	12
113	1505	Two MNH singles with white horse unhitched. Two different settings.	7.50	158	1338G	Used set of three tagging error singles on paper; 50% gap, 40% to right, 30% to right.	8
114	1529	MNH margin single with black shifted up and right. "US 10c" covered.	10	159	1384	MNH single with precancel offset on gum side.	7
115	1541a	MNH corner setenant block/4 with green shifted 2mm to LL.	25	160	1500	MNH plate block/4 with black offset on gum side.	12.50
116	1541a	MNH margin block/4 with intaglio colors shifted up 2mm.	30	161	1525	MNH plate block with red and blue ink smears.	2
117	1557	MNH single with red star shifted down 5mm onto left side of spacecraft.	12.50	162	1529	MNH single with yellow color variety instead of gold. Includes normal copy.	8
118	1568a	MNH margin setenant block/4 with soldiers doubled due to misalignment of colors.	4.50	163	1542	MNH Zip block/6 with Rosalyn Carter's autograph in margin.	20
119	1568a	MNH ME block/4 with soldiers doubled due to misalignment of colors.	6.50	164	1618c	MNH coil pair with missing black wording and denominations.	8
120	1571	MNH single with tan color shifted down 4mm.	10	165	1712-15	Mint NH (heavy natural gum skips) singles; tagging on Swallowtail and Dogface off center, also, white printing flaw (dot) on Checkerspot.	20
121	1577a	MNH Zip pair with engravings shifted up 4mm.	17.50	166	1894	MNH pair with part of black building and flag-pole missing on left stamp.	15
122	1580	MNH Plate # single with tan background shifted left 2mm.	7.50	167	1894	MNH margin block/4 with UR stamp missing most of "20c".	15
123	1608	MNH margin single with brown litho shifted down 6mm. White strip at top of stamp.	12.50	168	2015	MNH margin single with complete offset on gum side.	20
124	1610	MNH single with brown intaglio down 7mm.	12	169	2024	MNH block/6 with chatter marks; grey horz lines in background.	6
125	1610	MNH pair with intaglio shifted right 1mm away from yellow flame.	7.50	170	2224	MNH very dry printed single.	20
126	1632	MNH single with intaglio shifted down. New design plus tagging ghost.	12.50	171	2237	MNH overinked and smeared single.	8
127	1690	MNH startling ME single with intaglio shift up and left.	15	172	2336	MNH pair with overinked and smeared top stamp.	8
128	1727	MNH single with brown shifted down 6+mm.	15	173	C32	MNH margin block/4 with heavy wet printing. Plane in red fog.	15
129	1727	MNH margin single with brown shifted down 2mm and right 5+mm.	15	174	C85	MNH single with pink figure.	5
130	1760-3	MNH margin setenant block/4 with litho shifted up and right.	25	175	C89	MNH margin single with lovely clear offset.	17.50
131	1795-98	MNH block/6 with plate #'s. Grey down 1mm.	10	176	C90	MNH margin single with lovely clear offset.	17.50
132	1797-98	MNH pair with grey shifted down 2mm.	7.50	177	C91-2	MNH CR block/4 with much of yellow missing in the faces and rest of design.	20
133	1800	MNH block/4 with plate #. Green color shift 2 1/2mm left. Est 25	18	178	C98	MNH horz strip/5 with wiping smear underlining "Philip Mazzei" on all stamps.	3.50
134	1942-5	MNH margin setenant block/4 with 2mm color shift up.	24	179	J81	MNH plate block/4 with dry black printing.	6
135	2014	MNH single with intaglio black shift left 1+mm.	3	180	UX46	Two mint post cards with ink blobs; over "T", and over "L".	5
136	2353	MNH margin single with white shifted up.	6.50	181	UY14M	Mint post card with revalued surcharge on back side.	9
137	C11	MNH margin block/6 Pos R42-44, 47-49, with intaglio shifted down 1+mm and right 1mm. Top perfs entirely into design of stamps. Vignette correct for perfs. Est 54	35	D. TRIMMINGS (also see Booklets and Panes)			
138	C11	Three MNH right margin singles with various vignette shifts of 1 to 1 1/2mm. Est 52.50	24	182	600	Cover with coil single showing 20% of plate #.	10
139	C75	MNH single grounded plane.	10	183	843	MNH mismatched paste-up pair.	15
140	C81	MNH single near grounded plane. Est 5	5	184	1057	MNH coil strip/3 miscut showing plate #25124.	7.50
141	C85	MNH single with colors shifted.	5	185	MDX	MNH miscut line pairs with partial plate #'s; 805, 807, 1054, 55, 57, 1304, and 5.	8.50
142	C95-6	MNH vert pair with intaglio colors shifted down.	22.50	186	1286	MNH plate block/4 with uncut margin; six extra mm with full EE bars.	14
143	J100	Used pair with major shift of value into upper right frame.	10	E. PLATE VARIETIES			
144	RL35	Used block/4 with vignette shifted to LR into frame.	10	187	285	MNH F margin inscription pair with plate #592; double layout dots below "E_O" and below 9 in "592", etc. Est 85	44
				188	1460	MNH margin block/4 with broken red ring in #2 stamp. Cat 7.50	3

F. BOOKLETS AND PANES

189	632	MNH pane cut high exposing lmm of lower stamps at top of tab.	5
190	634	MNH pane miscut showing 40% LL #19973.	5
191	804b	MNH pane miscut showing 40% UL #22235.	4
192	807a	MNH pane miscut showing 45% LL #23161.	5
193	807a	MNH pane miscut showing 40% UL #23770.	5
194	1036a	MNH pane miscut showing 50% LL #26516.	6
195	1213c	MNH pane miscut 4mm right; Slog II tagged. Cat 50	20
196	1280c	MNH pane miscut showing EE bars and 60% LL #32967.	7.50
197	1280c	MNH pane miscut showing EE bars down rt side.	17
198	1288b	MNH miscut booklet pane; joint line at right and vert perfs thru center of stamps at left.	16
199	1288b	MNH complete booklet of three panes; each misperfed 5mm to left.	17
200	1595d	MNH complete booklet; top pane vert misperf 3mm left.	20
201	1737a	MNH complete booklet; two misperfed panes leaving both 15c denominations in left column of stamps.	30
202	1896a	MNH complete booklet with plate #1 and blurred offset image on gum side of pane.	9
203	1949a	MNH complete booklet #10 with vert misperf on two panes 10mm left.	25
204	2198-01	Mint NG split pane (#1) with turquoise, red, and yellow shifted down 1 1/2 to 2mm.	15
205	2209a	MNH complete booklet (#11111) with yellow shifted lmm right on both panes.	12
206	2121a	MNH complete booklet (#6) with wiper streak thru bottom stamps above wording.	7.50
207	2121a	MNH booklet (#6) of one pane with mismatched inking in roller to plate in 2nd "2" in "22" and "A" in "USA" partially brown.	15
208	2121a	MNH complete booklet misperfed 4mm to right splitting "22" on both panes.	30
209	2121a	MNH complete booklet with part of "USA" and "22c" missing on all stamps in both panes.	14
210	C72b	MNH miscut pane 2 to 4mm.	4

ANALYSIS OF AUCTION #33

Total number of lots-----	178
Number of lots sold-----	117
Total number of bidders-----	52
Successful bidders-----	41
Most popular lots-----	41, 85, 86, 95, 101, 143

AUCTION #33 PRICES REALIZED

	LOT#	BID	LOT#	BID	LOT#	BID	LOT#	BID	LOT#	BID
	3	40	37	14	70	8	100D	18	138A	25
	4	6	38	16	71	70	100F	14.50	139	17.50
	5	16	39	25	73	9.50	101	68.50	140	26
	6	20	40	6.50	75	28	102	36	141	65
	7	7.50	41	46	76	50	103	36	142	13
	8	11	42	3.50	81	51.50	104	22	143	6
	11	8	44	28	83	26	105	9	144	4.50
	13	3.50	45	19.50	84	37.50	106	16	145	5.50
	14	15.50	47	135	85	15	111	6.50	147	6
	16	17	48	22	86	16.50	119	9	148	6
	18	13	49	5.50	87	4.50	119A	35	149	5
	19	16	50	13	90	43	120	57.50	150	5.50
	20	20	53	4.50	91	3.50	121	2.50	151	9
	21	21	54	25	92	35	122	25	152	32
	22	12	55	22.50	93	15	126	12	154	16.50
	23	20	58	50	95	16	130	7.50	155	7
	24	26	60	16.50	96	22	131	10	156	60
	25	37	61	18	98	4	132	7	158	6
	26	35	62	5	99	15	133	45	159	5
	27	17	63	4	100	20	134	40	160	12
	30	10	64	26	100A	37.50	135	5.50	161	47.50
	32	3	67	24	100B	35	136	7	164	17
	33	11	68	4	100C	17.50	138	26	165	11
	34	43	69	17.5						

G. MISCELLANEOUS

211	Unique error cover with discontinued Post Office post-mark "Philadelphia Pa Penn Center Station". Opened clean at right. Full explanation attached.	75
212	Cinderella Oddity---take-off spoof block/4; "U S Postage" Goya Nude ala Scott #737.	5

AUCTION NOTES

Several members have inquired about placing lots into the EFO Collector Auction and exactly what to do. The procedure is very simple; just follow the instructions on the Consignor sheet located just below the bid sheet in your EFO Collector. Use a separate Consignor sheet for each lot. Either make other copies of the one or order extra sheets from me at \$.04 plus postage. If you still have questions, contact me by phone or letter and I will do what I can to help.

Normally, I will close an Auction from additional lots the 15th of the month prior to the Auction issue month. Sometimes sooner if I have ample lots early or if the Editor requires my Auction sooner for technical or other reasons.

If you have particular items without an established Minimum Bid, I may need to seek advice of our membership or someone who specializes in the particular area of collecting. This may require some time for correspondence.

The EFOCC commission is 10% of sale price or \$.25 for each unsold lot. That's not bad when you consider that almost every lot is pictorially shown and we capture a rather large membership of EFOers. So let me hear from you if you have anything to put in the Auction for sale or for donation to the Club.

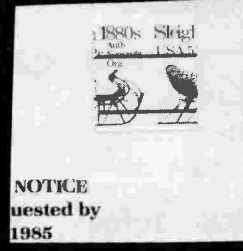
FOREIGN

213	385	New Zealand---MNH very unusual vert misperfed block/6 2mm right.	20
214	648	New Zealand---Used margin single with color misregistration causing Queen to have four eyes and two mouths.	12.50
215	470a	MNH single with red color missing. (Includes normal copy).	15
216	7	MNH single with dropped flag into "15c". (Includes normal copy).	8

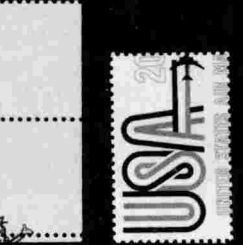
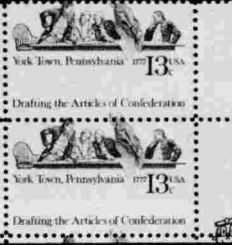
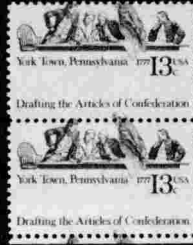
GOOD LUCK---JOE

Joseph Licata

14
29
41
62



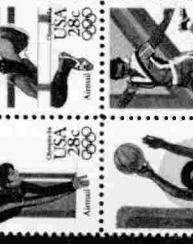
30
46
139



73
78
79
98



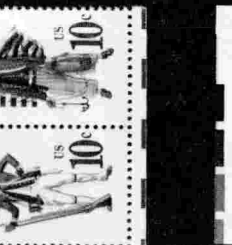
87
90
100



105
109
140



112
118
133



168
170
171
172
174





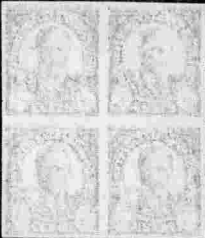
119
130



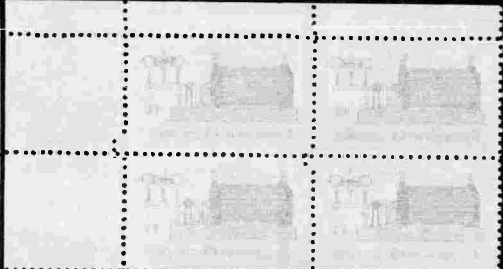
134
144
148



149
151
153



156
160
167



137
163





190
191
192



193
194
195
196



197
198
199



200
201



202
203



9th ROW--20 THE RIGHT--Believe it or not!
THE SMALLEST U.S. POSTAGE STAMP



6
15



9
15
19



24
152
155



After 5 days return to
8c. Worthington
Wm. Law Horn
R. F. D. or Street No.
Lockport, N.Y.
Post Office



13

13



THE DAILY NEWS

GRISWOLD & McWAIN, Inc., Publishers

BATAVIA, N. Y.

182
211
61
61

**EFOCC
AUCTION
BID
SHEET**

Name _____ EFOCC No. _____
 Home Address _____ Home Area & Number _____
 Phone _____
 City _____ State _____

Closing date:

March 31, 1988

5% buyer's premium will be added to your winning bid.

Bids of bidders with purchase limits will be executed in the order in which they list their lots.

Send completed bid sheets to--

EFOCC Auctions
 209 East 11th Ave.
 Conshohocken, PA
 19428

Send by Insured Mail? All postage costs will be billed to the bidder. _____

Please execute the following bids for me in this mail auction. (All bid sheets must be signed.)

Signature: _____

OFFICE
USE ONLY

Lot #	Bid	Lot #	Bid	Lot #	Bid	Lot #	Bid

CHECK YOUR BIDS CAREFULLY!
 Please limit my purchases to \$ _____ (Limits less than \$25 respectfully declined.)

<u>Consignor's Name</u>	<u>Lot #</u>	<u>Quantity</u>	<u>Lot #</u>
<u>EFOCC #</u>		<u>Catalog Used (If other than Scott)</u>	
<u>Condition (circle)</u> NH OG LH RG H NG HR NG as issued HH Used			<u>Sale #</u> <u>Buyer #</u> <u>Hammer</u> <u>Cat. Value</u> <u>Retail Est. and Source</u> <u>Minimum Bid</u>
<u>Centering (if applicable)</u> XF VF F Average			INSTRUCTIONS: Fill in all boxes with underlined headings. Leave the others blank. Then mount your lot here. For covers, multiples, or other lots, use the reverse side of the form or another sheet of paper or cardboard (better). Be sure to include this form if the lot is mounted separately (attach it to the lot, if possible). Send your lots by registered or insured mail for your protection. Extra forms are available for 4¢ each and a SASE. 10 for 1 oz., 20 for 2 oz.
<u>Faults (Beyond EFO properties)</u> Describe:			
EFOCC Auctions, J. A. Licata, 209 E. 11th Ave., Conshohocken, PA 19423			
For Auctioneer's Use			

Acceptable Abbreviations and What They Mean

Bidding Increments

	Bidding Area	Raise
\$	1.00 - 9.50	.50
	10.00 - 49.00	1.00
	50.00 - 97.50	2.50
	100.00 - 495.00	5.00
	500.00 +	10.00

Irregular bids will be reduced to the next lower level. Each lot will be sold to the highest bidder at one increment over the second highest bid unless the minimum bid is not reached. Any bid not in good faith, in the estimation of the Auction Director, may be rejected. The Auction Director reserves the right to remove any lot from the sale. A set of auction rules is available for an SASE.

CENTERING

AVE - Perforations cut design
 F - Fine, perfs clear of design
 VF - Very fine, well centered with opposite sides nearly equal
 XF - Extremely Fine, perfect centering on all sides

GUM

NH - Never Hinged
 LH - Light Hinge Mark
 H - Hinged, some gum loss
 HR - Hinge remnants, some pieces adhere to stamp
 HH - Heavy Hinge, much gum disturbance and/or heavy hinge remnant
 OG - Original Gum
 RG - Regummed
 NG - No Gum
 NG as issued - no gum on stamps, issued without gum
 NP - No Photo
 @ - at
 Bklt - Booklet
 blk - black
 BLK - Block
 btw - between

cat. - catalog value
 chng - change
 DBL - double
 dn - down
 EST - Estimate of value
 horz - horizontal
 imp - imperforate
 lf - left
 litho - lithographic printing
 M - Mint, uncanceled
 MB - Minimum Bid, lowest price at which lot will be sold
 mm - millimeter
 norm cpy - normal copy
 Pl# - Plate Number
 pr - pair
 prnt - printers
 rt - right
 SE - Natural Straight Edge
 SS - Souvenir Sheet
 Shf - Shift
 Used - Cancelled
 Vert - Vertical
 w/ - with

**J.E. McDevitt, 1903 Village Rd.,
 Norwood, MA 02062-2524**

BULK RATE
 U.S. POSTAGE
 PAID
 WOODBRIDGE, VA
 PERMIT NO. 70