

A Publication of the
EFO Collectors' Club
APS Affiliate #103
ATA Chapter #94

www.efocc.org

The EFO Collector



October-December 2015 Volume XLIV No. 2 Whole Number 181 ISSN 1099-7377

*More errors, freaks
& Oddities*



Doctor Blades Failing!

What's wrong with this one?



*Reverse
Offsets*



Inside This Issue

Exhibiting EFOCC Members

Auction Highlights

Jim McDevitt Receives Luff Award

Joseph Monteiro: Australian Errors in Recent Auction Catalogues (Part 1)

John Hotchner: Not Spending Big Bucks – Part 4

David Hunt Presents Auction 142

5	From Your Editor	3
5	EFOCC Member Post	3
5	Secretary's Report	15
6	Treasurer's Report	15
12	Auction 141 Realizations	15
16		

World Stamp Show



To Err is Human, To Find is Divine



Upside down or grounded, Siegel sells them best.



Robert A. Siegel

AUCTION GALLERIES, INC.

For information about our auctions or to request a copy of the next sale catalogue and newsletter, please contact:

Robert A. Siegel Auction Galleries, Inc., 60 East 56th Street, 4th Floor, New York, N.Y. 10022

Phone (212) 753-6421 Fax (212) 753-6429 E-mail: stamps@siegelauctions.com

For on-line catalogues, prices realized and the Siegel Encyclopedia

www.siegelauctions.com

From Your Editor



A few items pertaining to EFOCC business this time.

Editorial Contributions

I encourage you to contribute your stories and articles to be published in The EFO Collector. It is always good to share your major and not-so-major EFO-related philatelic accomplishments with your fellow EFOCC Members. This can take many forms:

- ❖ Short notes regarding an EFO you are familiar with or about which you have read (including new discoveries, unusual items you see in auction catalogs, the list goes on and on).
- ❖ Good quality scans or photocopies of your album pages depicting EFOs (note that this is much easier than creating an exhibit page). You can even e-mail scans of your items, and your Editor will put together a page for you using the scans.
- ❖ A popular approach is to create a “My Favorite EFO” article. We have had many in The EFO Collector in the past.

In general, you do not need to worry much about a perfect English, that is where your Editor comes in. I will be happy to work with you to provide best possible presentation for your material, both in layout and grammar.

If you send me scans, my recommendation is that stamps be on a dark background (if possible). Scans should be in color at a resolution of 300dpi or 600 dpi. Higher resolutions are better, because that allows the picture to be printed in a larger size. Not sure if you noticed that stamps tend to be small and many stamp magazines routinely print them enlarged.

If you mail me photocopies, then, it is best if the stamps are on a dark background, the photocopies are in color, and an enlarged photocopy is best. Also, when putting stamps in an envelope, try not to fold the photocopy through a stamp image. Please indicate if you wish the photocopies returned, and in that case include a SASE.

I do discourage you from sending original stamps, unless of minimal value, and will reject any responsibility for damage or loss. If you do, you need to send them by insured mail and include a SASE with insured postage for returning them.

Finally, please note that all material in this journal is contributed by your fellow Members. Why not chime in with your contribution? It will get better as many different Members contribute, each with their own points of view and opinions!

NY 2016

Unfortunately, we do not have a scheduled meeting at NY 2016, which will take place in New York from May 28th to June 4th, less than two months from now.

If you plan to attend the show, I encourage you to e-mail or mail me or Dave Hunt (see page 4 for contact information) with

The EFO Collector | www.efocc.org

the dates you expect to be at the show. Dave and I will be there at least some of the time. If there is enough interest, we could get together to meet and swap stories.

Cemil ☆



EFOCC Member Post

WANTED: Valuable United States Major Errors. Scott or Scott-Datz listed or new discoveries. Send photocopies or telephone me (201-343-9239, 11am-7pm). No internet. Jacques Schiff, 211 Johnson Avenue, Apr. 2G, Hackensack, NJ 07601.

WANTED: U.S. POSTAL COUNTERFEITS made to defraud the government/postal service. Mint, used and especially usages. Lenz, P. O. Box 296, Sterling Hts., MI 48311, stampsjoann@prodigy.net; phone: (586)675-7303.

I have over 1,000 singles and plate blocks/strips with misperfs, color shifts, imperfs, etc., for sale. Tell me what you need. Stan Goldfarb, 8520 Atwell Road, Potomac, Maryland 20854, golfar1@ix.netcom.com, (301)279-0754.

Overrun Countries Series. Book 1, The Poland Stamp and It's Varieties, 54 color pages, Spiral Bound, 8½x11, Scott 909, \$35 postpaid. Check, PayPal. Keith Lichtman, 37 Indale Ave., Staten Island, NY 10309, klichtman@verizon.net. Available thru eBay.

Overrun Countries Series. Book 2, The Czechoslovakia Stamp and It's Varieties, 63 color pages, Spiral Bound, 8½x11, Scott 910, \$42.50 postpaid. Check, PayPal. Keith Lichtman, 37 Indale Ave., Staten Island, NY 10309, klichtman@verizon.net. Available thru eBay.

Overrun Countries Series. Book 3, The Norway Stamp and It's Varieties, 54 color pages, Spiral Bound, 8½x11, Scott 911, \$45 postpaid. Check, PayPal. Keith Lichtman, 37 Indale Ave., Staten Island, NY 10309, klichtman@verizon.net. Available thru eBay.



ALL CONTENTS COPYRIGHTED © 2015 BY THE EFO COLLECTORS' CLUB.

Authors and contributors have express permission to reuse of their material elsewhere. Except for material reprinted herein, or material individually copyrighted by the author, material herein may be reprinted elsewhere as long as full credit is given to The EFO Collector, citing the issue date and number and giving the address of the EFOCC Secretary. ♦ The EFO Collector is published quarterly, in March, June, September and December. The submission deadline for any issue is the 15th of the month preceding the issue, e.g. 2/15, 6/15, 8/15 and 11/15. Send or e-mail editorial material directly to the Editor. Sample copies of The EFO Collector are available for \$3 from the Secretary. ♦ Membership includes subscription to The EFO Collector. Membership fees are as follows:

	Members with addresses in the U.S. or Canada	Members with addresses elsewhere
One year's dues	\$20.00	\$37.00
One year membership renewal	\$20.00	\$37.00
Two year membership renewal	\$37.00*	\$70.00*
Life membership	\$350.00†	\$500.00

Please make membership renewal checks to "EFOCC" and mail to Treasurer. Charges can be paid via PayPal, subject to a \$2 convenience fee, e-mail Secretary for details. [*] Each additional year prepaid at the same time is \$17/\$33. [†] \$300 for those older than 65.

Advertising Rates

	Per Issue	Contract 4 Issues
Full page in color	\$100.00	\$328.00
Half page in color	\$80.00	\$280.00
Quarter page in color	\$65.00	\$244.00
Cover location in color	\$125.00	\$400.00
2 page center spread in color	\$150.00	\$450.00

Single insertion advertisements and from those who are not APS Members must be fully prepaid. Four-issue contract rate advertisers will be invoiced in full upon publication of their first ad. 20% discount for black & white advertising. The deadline for ad copy is the 15th of the month preceding the issue. General advertisement inquiries should be directed to the Advertising Director at moek78@msn.com. Advertisement copy related inquiries should be directed to the Editor. Ad payments should be directed to Treasurer. Please make checks payable to "EFOCC".

EFOCC Officers (2015-2016)

President	Wayne Youngblood	WYStamps@gmail.com	
Vice-President	Cemil Betanov 153 Claudy Lane, New Hyde Park, NY 11040	CemilB@optonline.net	Phone: (516) 849-6604
Auction Director	David Hunt 45 Fairway Drive, Denver, PA 17517	dhhunt@ptdprolog.net	Phone: (717) 445-9420
Treasurer	David Hunt 45 Fairway Drive, Denver, PA 17517	dhhunt@ptdprolog.net	Phone: (717) 445-9420
Secretary	Scott Shaulis P. O. Box 549, Murrys ville, PA 15668-0549	scottshaulis@comcast.net	Phone: (724)733-4134
Editor	Cemil Betanov 153 Claudy Lane, New Hyde Park, NY 11040	CemilB@optonline.net	Phone: (516) 849-6604
Club Member-at-Large	Nancy B. Clark P. O. Box 427, Marstons Mills, MA 02648-0427	nbc@cape.com	Phone: (508) 428-9132
Club Member-at-Large	Edward A. Kennedy 19 Ranier Road, Effort, PA 18330-8829	moek78@msn.com	Phone: (570) 620-2011
Advertising Director	Edward A. Kennedy 19 Ranier Road, Effort, PA 18330-8829	moek78@msn.com	Phone: (570) 620-2011

EFOCC Member Post Submission Form

Every EFOCC member is entitled to three free 35 word listings per year in the EFOCC Member Post. To use your free listing, please complete this form, and mail it to the Editor. If you wish, you can also e-mail your request to the Editor.

Help With Members' New Projects Submission Form

If you would like a free listing in The EFO Collector to help you with a new EFO project, please complete this form and mail it to the Editor. If you wish, you can also e-mail your request to the Editor.

I am looking for

Name, address, e-mail:

Exhibiting EFOCC Members

INDYPEX 2015, October 2-4, Noblesville, IN

William Averbeck, *Canadian Postal Rates, Regulation and Usages in the Small Queen Era: 1870-1807*, Grand & Gold, American Philatelic Society Pre-1900 Medal of Excellence, Postal History Society Award.

William Averbeck, *Canadian Error Stamps and Their Causes*, Gold, American Philatelic Society Post-1900 Medal of Excellence.

FILATELIC FIESTA 2015, November 13-15, San Jose, CA

Don David Price, *\$1.00 Rush Lamp & Candleholder Stamp*, Single Frame - Grand & Gold, American Philatelic Society Post 1980 Medal of Excellence.

Fran Adams, *Roosevelt & Churchill in Newfoundland, The Atlantic Meeting*, Single Frame – Vermeil, American Topical Association First.

Anthony F. Dewey, *The War Rate: 1815-1816*, Single Frame – Vermeil.

Fran Adams, *Eskimo, Arctic People of the Ice and Snow*, Single Frame – Silver, American Topical Association Second, American Association of Philatelic Exhibitors Award of Honor.

CHICAGOPEX 2015, November 20-22, Itasca, IL

Alfredo Frohlich, *Republic of Colombia – International Mail 1886-1899*, Gold.

FLOREX 2015, December 4-6, Orlando, FL

Alfredo Frohlich, *Panama, The Path Between the Seas*, Grand & Gold, Postal History Society Award.

Congratulations to our Exhibitor Members!

Auction Highlights

David Hunt

There is something to please everyone in Auction 142 – or at least I hope so. Coils and booklets are well represented along with the other usual suspects. Lot 55 is a nicely centered copy of the QE4 variety “AT in STATES” joined at top. This variety is listed in Scott and even illustrated in my edition. The flaw was caused by a broken transfer die and occurs in quite a few positions on one plate so you might think this variety is easy enough to find, but I have searched dealers’ stocks at shows with no success. Try it, maybe you’ll be lucky, or save yourself time and effort and buy this one.

Lots 56 and 62 are ‘gotchas’. They look like misperfs, but that’s just to fool you because they are really color shifts. If you look closely you’ll see the litho background is in correct alignment, so that means the engraved colors are shifted.

There are two examples of reverse offset in the auction: lots 107 and 123. The latter lot is a fine, brightly colored example.

The EFOs on cover listed in the previous auction were popular, bucking the usual trend, so I have listed a few more in this auction. It seems to me that used EFOs, and especially EFOs from the last 70 years are of less interest to the collecting community than mint examples. Yet it seems logical that used EFOs, particularly those still on cover are less common than mint. EFOs spotted by someone ‘in the know’ will be saved mint, those used for postage by unwitting mailers are probably not often kept by the recipient and discarded, thus the survival rate is low. I should think that makes EFOs on cover most uncommon.

Jim McDevitt Receives Luff Award

We are happy to report that our EFOCC Life Member, EFOCC past President, Secretary and EFO Collector Editor Jim McDevitt was the recipient of the 2015 Luff Award for Outstanding Services to the American Philatelic Society. The award was announced in the September 2015 issue of *The American Philatelist*. In addition to his contributions to the EFOCC, Jim was Chair of the Affiliates Committee of the American Philatelic Society for 16 years. Our congratulations to Jim for a recognition well deserved!



Australian Errors Reported in Recent Auction Catalogues (Part 1)

Joseph Monteiro

Major errors on stamps generally occur because of the printing press or the perforator. There are many types of printing and perforating errors. The printing errors can range from inverts to missing colour to shifted colour errors, etc. The perforating errors can range from full imperforate errors to part imperforate errors to misperforated errors to double perforated errors, etc. The most glamorous printing errors are inverts (i.e. stamps with inverted centres), however missing colour errors are also quite interesting. The most important perforating errors are full imperforate errors but these errors are not as interesting as some part imperforate or other perforating errors. Many reasons have been put forth to explain these errors and often their explanation can get quite technical and depends on an understanding of the machinery used in printing and perforating these stamps.

In this article, printing and perforating errors on Australian stamps that have appeared in a few major recent auction catalogues of Australia are examined. These errors have been examined chronologically by the year in which the stamps were issued.

Printing Errors

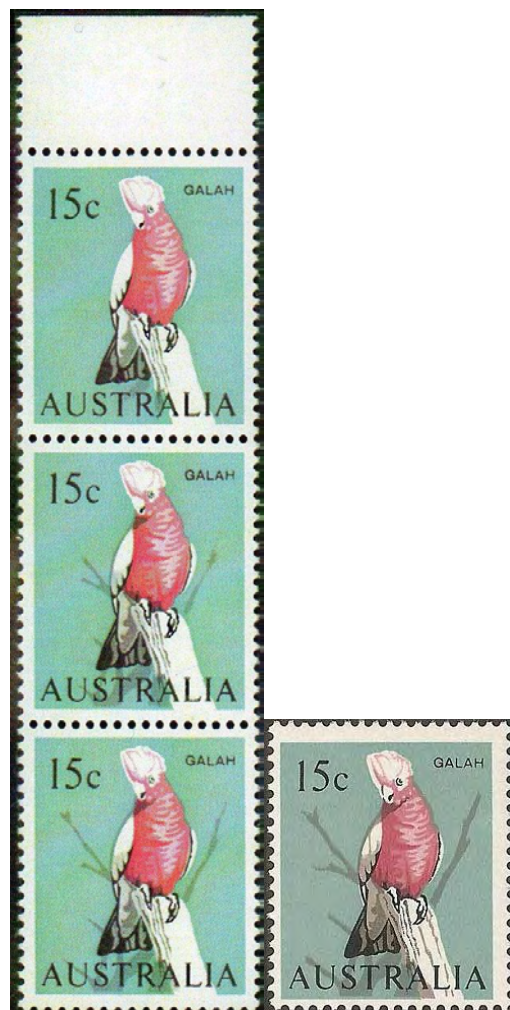
Missing Colours



On October 20, 1965 to celebrate Christmas, Australia Post issued a 5d stamp depicting the nativity scene. The stamp was designed by John Mason. The stamp was printed in colours of light blue, dark blue and gold. The auction catalogue described this missing colour error as follows:

*"1560P ** 1965 5d Christmas with variety blue missing with copy of BSAP cert 1973. Fine. ACSC 435cb. Est. \$1000"* [1]

The illustration clearly shows the absence of the blue colour. This is clearly evident when compared to the "normal" shown on the right. The most likely reason for the missing blue colour is the absence of blue colour in the printing machine. This is often visible when we are printing with our PCs and one colour is gradually fading because of lack of ink in the colour ink cartridge. The computer controlling the flow of ink in the printing machine was slow to correct for the absence of the blue colour. Another reason that has been attributed to such problems is that the computer controlling the flow of ink to the printer was turned off before the printing fully stopped.



On February 14, 1966 Australia Post issued its definitive stamps in decimal currency (i.e. cents and dollars from shillings and pounds). The 15c stamp depicted the bird Galah. It was designed by Mrs. H. Temple-Watts. The stamp was printed using photogravure in colours of blue-green, pink and grey. The auction catalogue described this error as follows:

"1851 1966 15c Galah vertical strip of 3 with top selvedge showing grey partially omitted in varying degrees on each stamp. This strip is from sheet no. 053285, the only sheet affected thus only 10 such strips can exist. RPSV Cert. (2011) ACSC 455cb var. Est. \$2000" [2]

The missing grey colour is clearly visible on the grey branches at the side of the bird on the top stamp and to varying degrees on the stamps below. Missing colour errors can occur because of a number of reasons: malfunction of the printer, lack of ink in the printer, foldover of part of the sheet of stamps on the other stamps, paper adhesion not part of the sheet of stamps, extraneous material that became attached to the sheet of stamps, fluids used in lithographic printing causing random missing colour, etc. In the 15c Galah stamp, it appears that the missing ink was caused because of lack of ink.



To promote non-Olympic sports, Australia Post issued a set of seven stamps on July 24, 1974. The stamps have the same 7c denomination and one of them depicts golf. The stamps were designed by Arthur Leydin from drawings by Des O'Brien and were printed on the Rembrandt Press of the Note Printing Branch on paper containing Derby luminescence. This stamp was printed in colours of yellow, light-brown and black. The error was described in the auction catalogue as:

"1225 1974 7c Golf with black omitted. A stunning printing error showing missing golf club, "Australia" & "7". MUH with bottom selvedge. SG 573a Cat. £1800. Est. \$2,200" [3]

This missing colour on this 7c non-Olympic sport stamp is quite evident as the stamp does not only have the golf club missing in part but also does not have the name of the country and the value on the stamp.

On August 27, 1975, Australia Post issued two definitive stamps (18c and 45c) on Australian Wildflowers. The 45c stamp depicts the *Callistemon teretifolius* found only in Southern Australia. The stamp was designed by Frank Knight. The stamp was printed on Shoalhaven KP6T paper on the Rembrandt Press of the Note Printing Branch on paper containing luminescence. The stamp was printed in colours of light green, red brown and black. The stamp was described in the auction catalogue as:

"1360 1975 45c Wildflower vertical strip of 6 with bottom selvedge. The 4th & 5th stamps showing variety "green on twigs omitted". Fresh MUH. SG 609b Cat. £500 per variety. Est. \$280" [4]

The missing green on the twigs of the third and fourth stamps is quite evident. One often tries to speculate why these errors occur but in the absence of all the evidence it is typically difficult to pinpoint the exact cause. It should also be remembered that fading of colour can occur and colour is affected by exposure of stamps to sunlight.





To celebrate Christmas in 1975, Australia Post issued a set of three stamps (15c, 25c and 55c) between October 3 and November 1, 1978. The 15c stamp depicts the Madonna and the Child after Van Eyck. The stamps were printed using photolithography by Asher & Co. on litho chromo stamp paper incorporating helicon. The stamps were printed in brown, red, yellow, magenta and black. The auction catalogue described this missing colour error as follows:

"1362 1978 15c Christmas vert. strip of 3 showing magenta partly omitted with two normal. Dunkerly Cert. (2008) ASCS 825ca Cat. \$1000. Est. \$250" [4]

In this colour error, the absence of the magenta colour on the lower half of the dress is evident on the last stamp. The colour is not missing from the entire dress on the stamp. The fact that this error is in a straight line and on part of the stamp may provide a clue as to why this error occurred.



Australia Post on August 25, 1976 issued six definitive stamps (5c, 25c, 35c, 50c, 70c and 80c) on Australia scenes. The 35c stamp depicts the Wittenoom Gorge. The stamps were designed by Otto Borchert and printed in colours of brown, blue, olive-green and purple. The auction catalogue states:

"1234 1976 35c Wittenoom Gorge with purple (background mountain) omitted. MUH. ACSC 749c Cat. \$4000. Est. \$2,200" [3]

The omission of the colour on this stamp would not have been noticed by a non-philatelist. The purple mountain is missing above the orange on the left of the stamp.

On July 17, 1978, Australia Post issued definitives on its Birds. Five stamps (5c, 20c, 25c, 30c and 55c) were issued. The 5c stamp depicts the Hooded Dotterel which is only found in Australia's south-western region along the salt lakes and in parts of Tasmania. The bird is also known as the Hooded Plover. The stamp was designed by Kay Breeden-Williams. The stamp was printed in colours of black, brown, grey-brown against a background of yellow-brown. The auction catalogue described this missing colour error as follows:

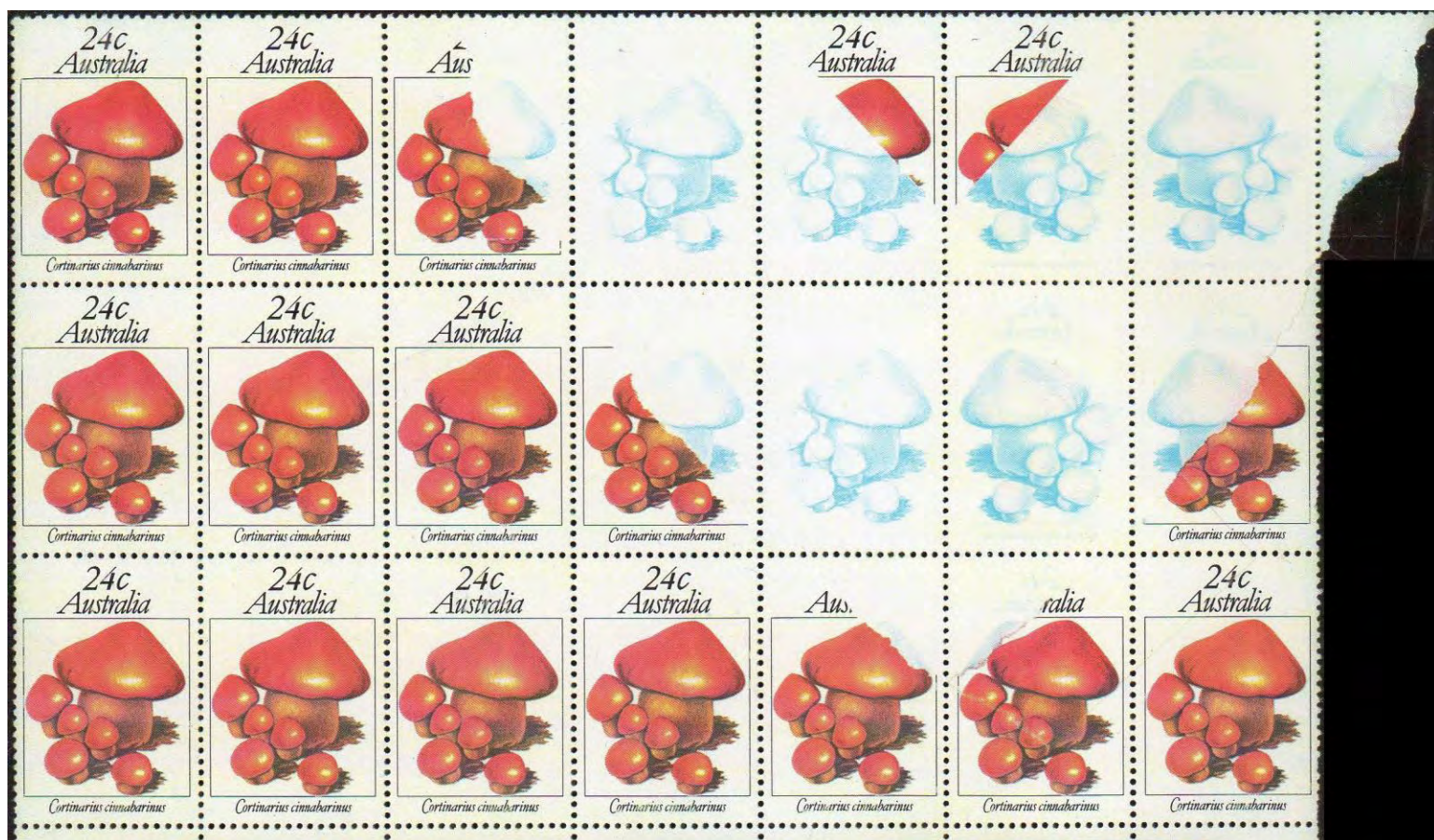
*"1587P ** 1978 5c Bird (Hooded Dotterel) in block/30 with spectacular variety grey-brown omitted on 15 units. This new discovery in effect yields 5 vertical strips/6 each having 3 units missing grey-brown. ACSC 803c (footnote mentions "On one sheet the seventh row showed the grey-brown printing*



(predominantly the Bird's wing) omitted"). As such this is a different and new discovery. The cat value for "grey-brown omitted" is \$2500 per unit (2002 edition). Or total cat value on that basis \$37,500. Minor bend but a unique exhibition piece. (30). Est. \$10,000" [1]

The absence of the grey-brown colour on three of the horizontal strips is quite striking. The other colours also appear lighter. Was there no grey-brown colour in the printing machine or did something interrupt the flow of ink? In these errors where

parts of the sheet in the middle show missing colour it is difficult to pinpoint the exact cause of the error. Since the error occurred only on three rows of the sheet there could be a logical explanation for the error. If the colour occurred on the reverse of the other stamps in the sheet it may suggest a reason, foldover of the sheet. Or if some other paper adhesion was on the rows, another reason may apply. It is also possible that the printing machine was turned off or went off due to failure of electric power and when restarted it missed these three rows.



On August 19, 1981 four stamps (24c, 35c, 55c and 60c) were issued by Australia Post on Australian Fungi. The stamps

were designed by Cella Rosser. The 24c stamp depicts the Cortinarius the largest and most colourful genus of the gilled

fungi. The stamps were printed by Leigh-Mardon Pty Ltd on a four colour Roland Rekord Press on litho-chromo paper incorporating luminescence in sheets of 100 (50x2) using photolithography. The stamps were printed in colours of yellow, magenta and black. The auction catalogue described this missing colour error as follows:

*“778 ** 1981 24c Fungi – YELLOW, MAGENTA & BLACK OMITTED from 2 units completely & 13 units partly in blk(35) – caused by paper adhesion during printing which is still attached being printed & fully perforated. Unrecorded, fine & spectacular. Est. \$2000” [5]*

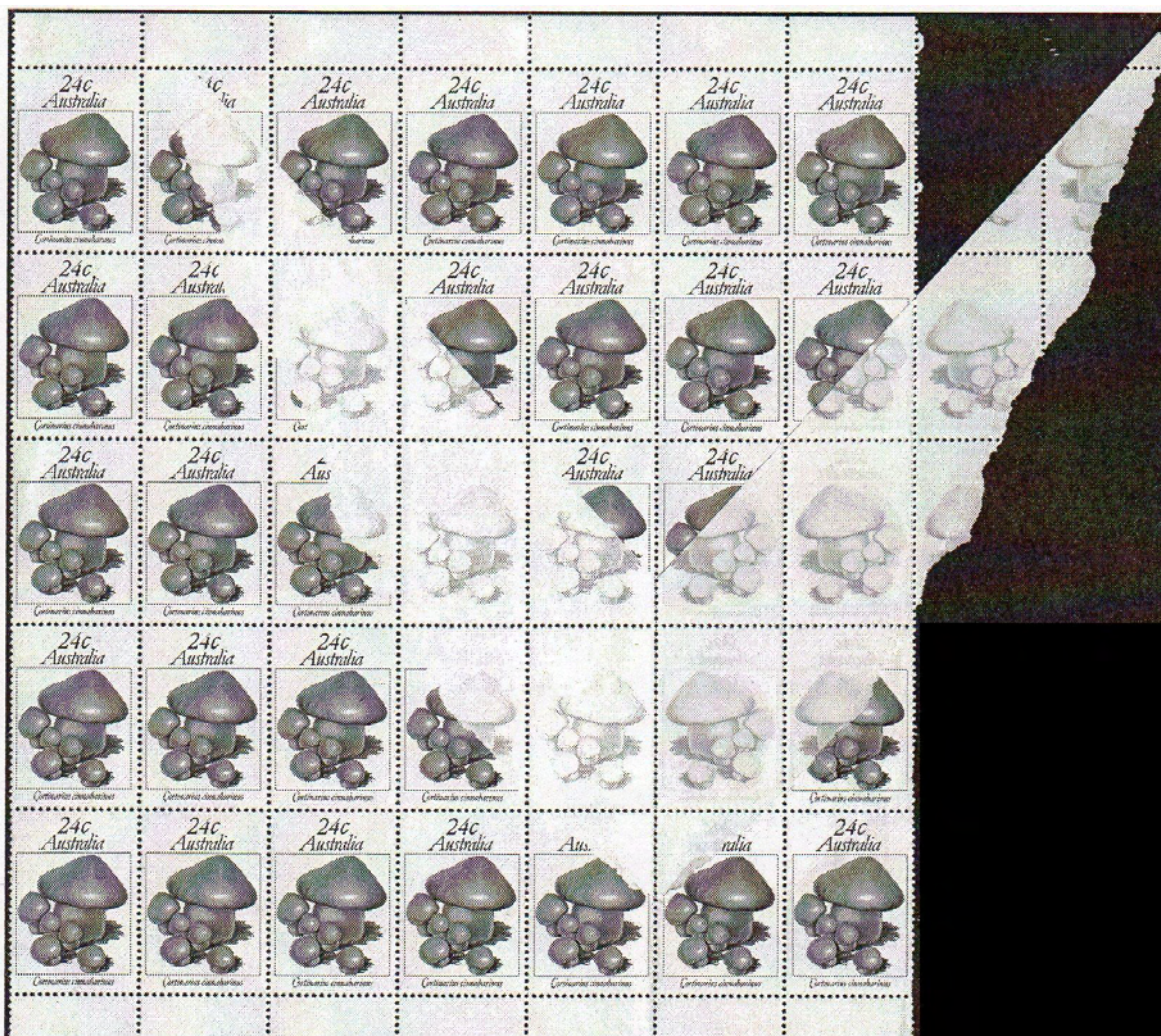
This is undoubtedly the most interesting of the missing colour errors with the yellow, magenta and black omitted on two stamps completely and partly from some of the other stamps. Most philatelists are interested in how such an error could have occurred. Imagine that a loose sliver of paper in the form of a wedge got stuck to the sheet of paper somehow before the stamp was printed and perforated. Assume that the printing and perforating occurred. This would occur not only on the sheet of paper to be printed but also on the wedge covering part of the sheet. Now remove the wedge, the place where the wedge appeared on the pane should be white. As a result, some of the stamps where the wedge once appeared would have some of the original colour of the stamp. But why was their blue colour on

the stamps where the wedge appeared when printed? Stamps are printed using a colour separation process, first one colour and then the next and so on. It is likely that a blue colour was used in the printing and went through the wedge on to the sheet of stamps. When the wedge is reversed as seen in the illustration the offset on the reverse is clearly visible on the back of the wedge (note the direction of the mushrooms and the additional small ones in blue when seen on the reverse of the wedge). The wedge still remained on the sheet because it was perforated with the stamp sheet and so got stuck. The illustration shows the reverse of the wedge on the right side. If the wedge was returned to the original position the original colours of the stamp would be on it. ☆

Editor’s Note: This article will be continued in the next issue.

Bibliography

- [1] Velvet Collectables Group Pty Ltd., Public Auction Sale, June 14th 2014, Volume 21 Issue No. 2, pp. 59-60.
- [2] Ace Stamp Auctions, Public Auction No. 15, 28th & 29th June 2014.
- [3] Ace Stamp Auctions, Public Auction No. 12, 3rd & 4th November 2012.
- [4] Ace Stamp Auctions, Public Auction No. 13, 20th & 21st April 2013.
- [5] Craig Chappell, Public Auction No. 34, 27 July 2012, p. 37 and back cover.
- [6] Craig Chappell, Public Auction No. 32, 10 June 2011, pp. 4, 26 and 27.
- [7] www.prestigephilately.com
- [8] The background information on the stamp has been obtained from the Australian Stamp Catalogue, 28th Edition, Seven Seas Stamp, August 1999.





Devious Fake Detected by PF Experts

First issue part-perforate Revenue stamps can be a challenge to accurately identify. Too often a perforated stamp is trimmed and then passed as a scarce and valuable part-perforation stamp. But not in this case.

This stamp was “doctored” by adding perforations to an imperforate First Issue \$2 Conveyance stamp to resemble the valuable part-perforate R81b. Deceitful and devious.

We compared our genuine \$2 Conveyance reference copy to the submitted example. Notice the perforations match at the top, but seven perforations down they no longer match. Closer examination with our lab equipment confirmed the perforations were added to the stamp.

Your stamps will receive the same expertise and analysis. Each day we use our reference collection and high-tech video spectral comparator, the VSC6000, to keep our hobby safe.

PF Certificates – The Gold Standard

- We have the largest in-house staff of any U.S. expertising service, supplemented with outside experts.
- Over the past 70 years, we’ve issued 550,000 certificates.
- World class reference collection and library.
- State-of-the-art technology on the premise allows our experts to examine your stamps and covers in fine detail and assess them accurately.
- We are the only service in the U.S. with its own VSC6000 and Brucker XRF x-ray spectrometer

Collect with Confidence with a PF Certificate



The Philatelic Foundation
 341 West 38th St.
 New York, NY 10018
 (212) 221-6555
www.PhilatelicFoundation.org

PerfOrations: Not Spending Big Bucks – Part 4

John M. Hotchner

P.O. Box 1125, Falls Church, VA 22041, jmhstamp@verizon.net

In the last three issues of *The EFO Collector*, we have been looking at EFO material that does not cost an arm and two legs. Our approach has been to show examples of what is available, category by category.

Part I covered color misregistrations, shifted perforations, miscut coils and booklet panes, color smears, web splices and plate varieties.

Part II covered color variations, perfin, plate numbers and other marginal markings, and mistakes in cover cachets.

Part III covered printing gaps, wet & dry prints, meter flaws, cancellation varieties, and Giori inking varieties.

As I poke through my EFO folders, I find more and more categories that fit this approach, and for that reason, this will not be the last of these columns. There will be at least one more; maybe two. So, let's get started today with:

Offsets

In the days when stamps were printed by flat plates, sheet by sheet, the as yet ungummed sheets were stacked on top of one another as they were completed. This was also the era of engraved stamps, and intaglio ink took a long time to dry. Based on the evidence I would say that the darker the color, the longer it took to dry. I say this because the best examples we usually see are stamps printed in black, dark green and dark brown. Or maybe they are just more obvious.



Figure 1.

On used stamps, as shown in Figure 1, they are plentiful and cheap. As shown by the two 17¢ Wilson examples, the match to the front can be dead on, or shifted in one direction or another. It depends upon how the sheets were stacked. An important feature to note is that unlike stamps actually printed on both sides, the image is reversed on offsets.



Figure 2.

That said, not all reversed images are production offsets. In Figure 2 is a modern multicolor offset printed on pregummed paper. This happened on a sheet-fed press because a sheet failed to go through the printing stage, and the ink that would have been on the paper, was deposited on the impression roller that pressed the paper into the plate. The next sheet through the press then picked up the ink on the impression roller on top of the gum. These are not rarities, but they are more than \$5 items.



Figure 3.

I can't leave this topic without mentioning a variety that masquerades as an offset. See the 20¢ Flag Over Supreme Court, graphically cropped from a cover, in Figure 3. It is a reversed image, successfully used in 1982. What happened here is that moisture resulted in these lick-and-stick coils bonding together while still in a roll. The user clearly did not

want to throw away the coil, or go to the trouble of washing the stamps apart and having to glue them on envelopes.

So he or she probably used the finger-nail method of pulling the strips from the coil. Since paper is made up of several layers, the strips came apart but a layer still stuck to the gum. That exposed the reverse image from the back of the stamp; with the reversed image as shown. They still had to be glued to covers, but at least the face value was not lost. These are sometimes seen as mint strips, described (hopefully) as rarities. But they are only a curiosity.

Doctor Blade Lines

These come in two varieties – hard streaks and soft streaks, as shown in Figures 4 and 5. They are always on a slight diagonal and in one of the gravure colors used to print the stamp. Their origin is the plate wiping process. A so-called “doctor blade” runs over the plate after it is inked in order to remove any excess ink on the surface of the plate; leaving the ink in the gravure depressions that will print on the paper. If that blade is somehow nicked, it will trail a thin line of ink across the plate that will print. This is the hard doctor blade streak, and will repeat until the blade is replaced or repaired. See Figure 4 where the left hand Sidney Lanier has a hard streak from nose to beard.

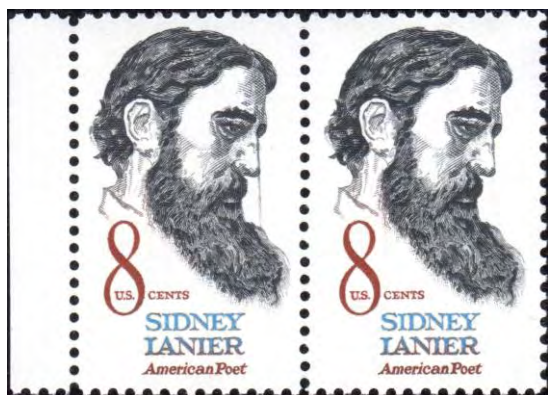


Figure 4.

A wider and usually blurry line of ink, the soft doctor blade streak, can result from damage that is more radical; but more often it happens because a clump of ink is picked up by the blade and as the blade moves, some of that clump trails behind it. This is constant on affected sheets, but is not constant from sheet to sheet. It is by far the more often seen of the two varieties. Two such streaks can be seen in the bottom margin of the Figure 5 8¢ Partridge stamps.

Massive failure of the doctor blade is also sometimes seen, but these are much more unusual. Only one color will be affected and it will look something like the 22¢ United Way plate block (Figure 6). These are generally not expensive as single stamps, but in the form of blocks, can get pricey.

Total failure is exemplified by the 20¢ Library of Congress commemorative stamp in Figure 7.

Gutter Snipes

Starting with the printing of US stamps on rotary presses, the make-up of printing sheets (usually four post office panes of 100 definitives or 50 commemoratives) changed from those separated by a colored line, to panes separated by paper

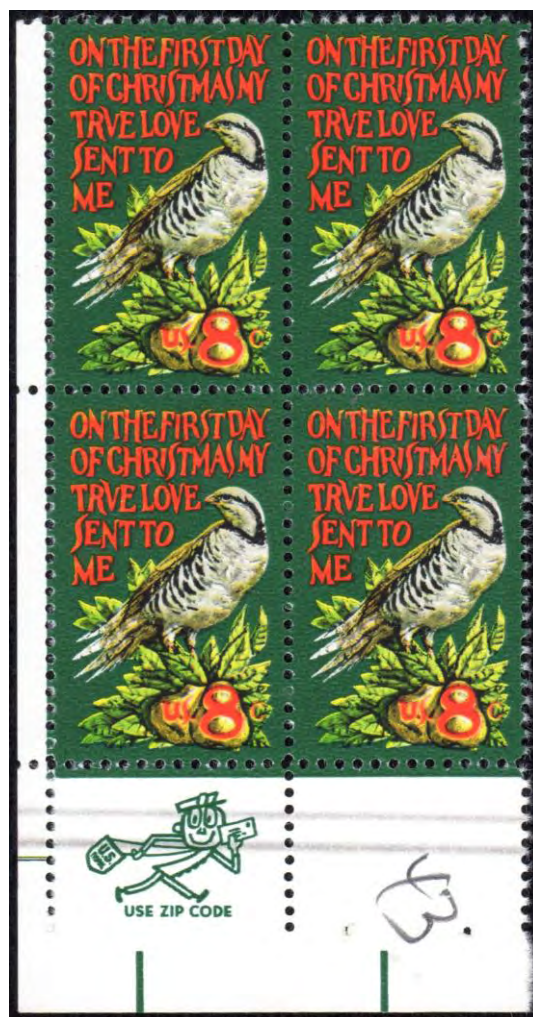


Figure 5.



Figure 6.



Figure 7.



Figure 8.

margins. These sheets would be sliced apart by automated equipment rather than by hand, and the margin paper provided a margin of error.

Even so, the slicing apart of sheets into post office panes was problematic, and the resulting gutter snipes, characterized by the presence of perforations (and sometimes bits of stamp from the adjoining pane, are fairly common. Examples are shown in Figure 8.

The middle item shown in that grouping is scarcer than the rest. It is an inter-sheet gutter snipe rather than intra-sheet like the others. Rotary press printing was done on a long roll of paper called a “web”. That meant that not just the post office panes had to be cut apart, but also the sheets printed in sequence on the web also had to be cut apart and stacked prior to the sectioning of the sheets into post office panes. This was a much more reliable process and few inter-sheet snipes will be found.

But since this is an esoteric field, few collectors can or do make the distinction between inter-sheet and intra-sheet. If you know what you are looking for – the light doubled line that served as a guide for the slicing process is the give-away – you

can find a relative rarity for next to no money. If you get really lucky you will find an example associated with a plate number.

The average gutter snipe rarely goes for more than 50¢ unless it is mint with a higher face value, or an inter-sheet plate block.

Solvent Wash

Seen most often on the lower value stamps of the Great Americans Issue of 1980, the problem was a flaw in the plate cleaning system. The result can be seen in Figure 9. A solvent was used to clean the plates between printings. Somehow, either solvent leaked onto the plate when it was not supposed to be there, or was not properly washed off the plate after cleaning. Whatever the problem, it was clearly a systemic problem as the type of flaw shown also exists on the 5¢ Hugo Black, the 17¢ Rachel Carson, and the 15¢ Kit Carson. Because they exist in some quantity, they are not expensive.



Figure 9.

Coil Leader Strips

Not considered by some to be EFO material, coil leader strips fit in the Oddity category in my book, and while scarce, they have very limited appeal – and so they are not expensive. Two nice examples are shown in Figure 10. Usually but not always they will be printed with the denomination and type of the coil. So the prize would be an example that does not match up with the stamp attached. Of course a dedicated huckster could make one of these if they chose to put in the time.



Figure 10.

Design Errors

Another in the Oddity category is the design error. This is a mistake in the design due to a mistake in the model used as basis by the designer, or because the designer consciously used artistic license to make the stamp more attractive, or simply was tired and missed something. Because this is a mistake in the basic design rather than in the production phase, every stamp produced will have the same problem. But if it is caught early, distribution can be stopped and a corrected version issued.

Probably the best known example is the 1994 Legends of the West sheetlet; the original of which has the portrait of Ben Pickett, Bill’s brother, when it was Bill who was to be honored. To make that long story short, the USPS was tipped to the mistake before the first day of sale, and was able to pull back

Note: You can buy one of those sheet in our current Auction, lot 153. See page 26 for the picture of the lot.)



Figure 11.

An example of the design error that was allowed to be sold such that every copy of the offending stamp is wrong can be seen in Figure 11 which includes both the stamp as issued and an artist's rendition of how the stamp ought to have been designed. It is the 10¢ Apollo 11 Moon Landing commemorative of 1969. It seems that Apollo 11 landed at the Moon's equator, but the shadows as portrayed on the stamp place the landing at its North Pole.

There are over 100 US stamps that contain design errors. One of my New Year's resolutions is to make up a list of these stamps but I have not gotten to it yet. Once done, I will make it available to EFOCC Members.

We will continue this series in the next issue of **The EFO Collector**. Meantime, questions and comments are always welcome. You can write to me at jmhstamp@verizon.net, or using regular mail at PO Box 1125, Falls Church, Virginia 22041-0125. 🌱

If you have a question, or a possible topic for John to cover in a future issue, please write to him at P.O. Box 1125, Falls Church, VA 22041-0125, or e-mail him at jmhstamp@verizon.net.

EFOCC Auction 141 Realizations (Closed January 31st, 2016)

Lot	Hammer	Lot	Hammer	Lot	Hammer	Lot	Hammer
1	\$15	3	\$6.50	6	\$4	14	\$62.50
15	\$11	16	\$15	17	\$12	20	\$16
26	\$6	28	\$8.50	32	\$75	33	\$5
35	\$60	36	\$40	40	\$25	41	\$25
43	\$21	46	\$60	48	\$20	50	\$4

Secretary's Report

Scott Shaulis

scottshaulis@comcast.net



New Member

Lauren Sobkoviak 309 NW 9th Redmond, OR 97756	1488	John Pajor 9 School St. Berlin, CT 06037	1489
---	------	--	------

New Addresses

John Bolek 1169 Palmetto Dr. Hubbard, OH 44425-1355	LM0018	Joel Radin P. O. Box 249 Ladson, SC 29456-0249	127
---	--------	--	-----

Reminder that if you have not paid your dues for 2016 yet, please do so. There are 17 members who will be receiving their second dues reminder shortly. If you have an address change, please let me or the Editor know so that you continue to receive your copies of The EFO Collector uninterrupted. Welcome aboard to our new members!

Respectfully submitted,
Scott

Treasurer's Report

David Hunt

dhhunt@ptd.net



Report for the Quarter July 1 – September 30, 2015

	Beginning balance:	\$5154.00
Income	Dues	\$459.00
	Samples	9.00
	Donation	5.50
Expenses	Printing costs	(773.90)
	Postage costs	(252.57)
	Ending balance:	\$4601.03

Respectfully submitted,
David H. Hunt, Treasurer

[illegible]

Lot	Hammer	Lot	Hammer	Lot	Hammer	Lot	Hammer
51	\$90	52	\$25	57	\$12	59	\$20
62	\$4	64	\$15	66	\$20	67	\$15
69	\$67.50	70	\$32	71	\$15	75	\$50
78	\$15	79	\$50	80	\$19	81	\$19
82	\$40	85	\$4.50	89	\$7	90	\$11
91	\$7	97	\$18	98	\$16	99	\$8
100	\$35	104	\$5	108	\$10	109	\$39
110	\$4.50	111	\$48	113	\$26	115	\$18
116	\$7	117	\$13	118	\$13	119	\$14
122	\$15	124	\$50	125	\$15	126	\$19
129	\$18	132	\$10	133	\$28	134	\$16
136	\$5	137	\$29	138	\$50	139	\$11

Members, please note: Unsold lots from Auction 141 are available for sale on a first come-first served basis for \$1 over the reserve price plus shipping with no buyer's commission. Contact Auction Director.

EFOCC Auction Rules for Consignors

Preparing Lots

Please use a blank form from a recent copy of the **EFO Collector**. Photocopies are fine. Please use a separate form for each lot.

Secure each lot to the front of the form; attach large lots to the reverse side. Protect all items with mounts, glassine, etc., and stiffeners, if necessary, but ***be sure*** item/items can be easily removed by Auction Director for examination and/or photographing. Do not use staples. Attach each item so that the description can be easily read. A simple and easy way to mount lots is to do so on dealer sales cards, or in glassines mounted face down for easy removal.

Include a reserve (minimum bid) or write "none". Lots may be revised to accurately describe items; or returned if necessary. Your name and EFOCC number must be on the consignment form, however, to preserve anonymity, these are removed from the consignment sheet before sending item to successful bidders.

Send consignments to David Hunt, 45 Fairway Drive, Denver, PA 17517. Use ***insured*** or ***registered*** U. S. Mail.

Consignor Fees

Consignor commission is 10% of the hammer price, with a minimum cost of 50 cents per lot.

Unsold lots incur a 50 cent fee per lot, and the consignor pays return postage and insurance.

Expenses and printing constraints make it impractical to picture every lot, especially those which are large in size. The EFOCC will exercise discretion in picturing lots.

Consignor Special Instructions

To save postage and labor, EFOCC can automatically re-submit unsold lots with lower minimums in a future auction, ***if you instruct EFOCC clearly what to do***.

If you send duplicate or very similar lots, it is consignor's responsibility to state clearly if you would like to have these placed in different sales. Generally, EFOCC places all items received in the same sale to minimize paperwork.

Consignment/Payment Timing

EFOCC receives consignments continually and prepares them for subsequent sales, roughly on a first-in/first-out basis. However, large lots may be spread over several auctions.

After the close of each sale, unsold lots are offered to bidders on a first come-first served basis for \$1 over the reserve with no buyer's commission or postage. This increases total sales, makes more bidders happy, and sells more lots for consignors, all for very little additional effort.

EFOCC needs approximately one month after auction's closing date to determine successful bidders, prepare and mail invoices, mail lots, receive payment from winners, list after sale lots and accept their offers, etc., etc. Thus, consignors can expect to receive payment about four to six weeks after an auction closes.

Lot #	Catalog	EFOCC Auction #142 – Lot Descriptions	Cat Val	Minimum Bid
1	1616	9¢ Capitol line strip of six, misperf. NH		\$11.00
2	1616	9¢ Capitol misperf pair NH		\$2.50
3	1616	9¢ Capitol misperf strip of four NH		\$5.00
4	1616	9¢ Capitol strip of four, misperf "down the middle" NH		\$20.00
5	1616	9¢ Capitol misperf pair NH		\$3.00
6	1897	1¢ Omnibus misperf pair NH		\$15.00
7	1897Ac	2¢ Locomotive imperf pair NH		\$28.00
8	1294	\$1 O'Neill change of legend misperf NH		\$25.00
9	1898A	4¢ Stagecoach misperf pair		\$13.00
10	1904	10.9¢ Hansom Cab misperf pair NH		\$18.00
11	1908	20¢ Fire Pumper misperf pair NH		\$7.00
12	J93	5¢ Postage Due vignette shift NH		\$10.00
13	1906	17¢ Electric Car line strip of six, miscut so plate number 2 appears at top NH		\$15.00
14	2252	3¢ Conestoga Wagon misperf pair NH		\$11.00
15	2225b	1¢ Omnibus misperf pair NH		\$7.50
16	2225b	1¢ Omnibus misperf pair NH		\$4.50
17	2255	7.6¢ Carreta misperf pair NH		\$6.00
18	1047	20¢ Jefferson Memorial, with horizontal smear near bottom NH		\$5.00
19	2259	13.2¢ Coal Car misperf strip of six with plate #2 on third stamp NH		\$30.00
20	2259	13.2 Coal Car misperf pair NH		\$3.50
21	2259	13.2¢ Coal Car misperf strip of three NH		\$5.50
22	2259	13.2¢ Coal Car misperf strip of three NH		\$9.50
23	1289b	20¢ Marshall, black-olive shade, misperf single NH		\$13.00
24	2261	16.7¢ Popcorn Wagon misperf strip of six NH		\$14.00
25	2261	16.7¢ Popcorn Wagon miscut single NH		\$5.00
26	2261	16.7¢ Popcorn Wagon misperf single NH		\$1.00
27	2261	16.7¢ Popcorn Wagon misperf strip of nine with plate #2 on fifth stamp NH		\$25.00
28	2261	16.7¢ Popcorn Wagon misperf strip of four NH		\$7.00
29	2265	21¢ Mailcar misperf pair NH		\$6.00

EFOCC Auction Rules for Bidders

How to Bid

Please bid on a consignment form from a recent EFO Collector. A photocopy is fine. Include your EFOCC membership number. For new bidders and non-EFOCC members, please include your APS membership number. Sign your bid sheet to acknowledge acceptance of the EFOCC auction rules; unsigned forms cannot be accepted. Submit bids to David Hunt, 45 Fairway Drive, Denver, PA 17517, e-mail to dhhunt@ptd.net.

Bidding Precautions

Minimum bids are not estimates, but are true reserves established by the consignors. Bids below the listed reserve will not be accepted.

Bidders are responsible for inaccurate bids. Bids do not have to be typed, but, please, be sure numbers and amounts are clearly legible. Confirm phone and e-mail bids with a written bid sheet.

Auction Bid Increments

Bid Level	Increment
\$1 to \$9.99	\$0.50
\$10 to \$49	\$1.00
\$50 to \$99	\$2.50
\$100 to	\$5.00
\$500 and up	\$10.00

Please use the following increments when bidding and/or assigning reserves to consignments. Lots are sold to the highest bidder at one advance over the second highest bid.

EFOCC reduces non-conforming bids to the next lower increment. For example, a bid of \$39.50 will be entered as \$39.00.

Special Bidding Instructions

As the EFOCC auction is a small auction, special instructions cannot be easily accommodated.

EFOCC cannot accept "BUY" bids, nor "INCREASE BY...%" bids. ***Please, make your final, best, and highest bid and you will get the lot at the lowest price available.***

Bidders' Payments

A 10% buyer's premium is added to the hammer price of each lot. Buyers pay postage, plus insurance on lots valued at over \$10.00.

Payment is due upon receipt of invoice. If you will be out of town for a while just after an auction closes, or are moving to your summer home about that time, please let EFOCC know at the time you place your bids.

Returning Lots

Within five (5) days of receipt of awarded lots, you may return any lot which is not described correctly provided such lot is still in its original condition. If an expertizing certificate is a condition of bidding, please inform EFOCC of this before auction closes.

One Final Request

Please ***bid generously on donation lots*** whose monies go entirely to the benefit of the EFOCC.

30	2265	21c Mailcar imperf pair NH		\$20.00
31	2464b	23c Lunch Wagon imperf strip of three. Tiny adhesion on back of left stamp. NH otherwise.		\$100.00
32	2280	25c Flag miscut coil pair with change of legend. Two short perfs on left side. Plate #13 on left stamp at top. NH		\$25.00
33	C95-6	25c Wiley Post pair with color shift NH		\$55.00
34	1286	10 Jackson progressive strip misperf from extra wide to normal. Normal stamp has slight bend. NH		\$55.00
35	CE2	16c Airmail Special Delivery with vignette shift NH		\$5.00
36	E15	10c Special Delivery perf shift LH		\$5.00
37	1305C	\$1 O'Neill misperf coil single with part of another stamp from end of coil. NH		\$25.00
38	602	5c Roosevelt miscut coil pair LH		\$8.50
39	1608	50c Lamp black color shift NH		\$35.00
40	1593	11c Printing Press pair with 2-way misperf NH		\$30.00
41	1291	30c Dewey pair with vertical perfs shifted NH		\$40.00
42	1402a	8c Eisenhower imperf and slightly miscut coil pair NH		\$30.00
43	899	1c Defense overinked NH		\$7.50
44	1338A	6c Flag misperf line strip of five NH		\$35.00
45	1067	3c Reserves misperfed with EE bars captured on stamp and the edge of the stamp from the next pane showing in the margin NH		\$23.00
46	1393	6c Eisenhower block of six with smear NH		\$10.00
47	1213a	5c Washington booklet pane miscut 30% to right NH		\$35.00
48	BK166	25c River Steamboats complete bklt, plate #1, small color shift (see left edge of stamps) NH. Face is \$5.00	\$10.00	\$6.00
49	BKC19	8c Airmail booklet with all panes miscut showing small part (10% or so) of plate number on each pane NH		\$22.00
50	BKC23	13c Airmail booklet with both panes miscut so up to 1mm of stamp from next pane shows NH		\$7.00
51	BK126	13c/10c Booklet with both panes miscut so up to 1mm of stamps from next pane show NH		\$11.00
52	1595h	BK127 13c/2c Booklet with both panes miscut and inserted upside down into booklet cover with tab and perfs at bottom. NH. Listed, but not priced in Scott		\$35.00
53	BK116	6c/1c booklet. Printing defect on right side of cover creates "bullseye". Stamps are normal. NH		\$6.00
54	C78a	11c Airmail booklet pane cut 7mm wide to right capturing EE bars. NH		\$25.00
55	QE4a	25c Special Handling, variety: "A" and second "T" of "STATES" joined at top. Used		\$10.00
56	1407	6c South Carolina engraved colors shifted up - not a misperf. NH		\$30.00
57	1557	10c Mariner 10 red color shift (the red star just peeking out at UL from behind the satellite) makes it appear as missing red. NH		\$20.00
58	1454	15c National Parks Cent. with engraved colors shifted right. NH		\$15.00
59	1446	8c Sidney Lanier two-way misperf NH		\$20.00
60	2484	29c Wood Duck misperf pair from booklet NH		\$10.00
61	1569	10c Lexington and Concord misperf NH		\$45.00
62	1203	4c Hammarskjold - engraved black and brown shifted down, not a misperf or the invert. NH		\$40.00
63	1542	10c Fort Harrod engraved black shifted left - see left margin and position of blockhouse NH		\$10.00
64	1472	8c Santa color shift NH		\$6.00
65	1024	3c Future Farmers misperf NH		\$35.00
66	2721	29c Elvis is all shook up with a color shift NH		\$28.00
67	2671	20c Aging vet pair with horiz perfs shifted down 6mm causing design change NH		\$20.00
68	2404	25c Washington State strip of three with vert perfs shifted right. Right stamp is creased and center stamp has a 3mm tear; in both cases it looks like someone tried to fold and separate the stamps along the gutter between designs. NH		\$30.00
69	999	3c Nevada horiz perfs shifted 8mm low, interpane perfs within stamp NH		\$30.00
70	1154	4c Pony Express design change misperfs (2), one from top row of pane and one from a middle row. NH		\$35.00
71	2814	29c Love horiz pair imperf between - printer's waste NH		\$125.00
72	O156	23c Official imperf block of four NH - printer's waste		\$50.00
73	2041	20c Brooklyn Bridge horiz perfs shifted down 17mm. Intrapane perfs (2 lines of perfs) into top stamp. NH		\$45.00
74	807	3c Jefferson horiz pair with horiz perfs shifted up 8mm LH		\$30.00
75	1395b	8c Eisenhower booklet panes (2) - miscut showing 80% of plate #s 32910 & 32911 NH		\$18.00
76	1278b	1c Jefferson booklet pane miscut showing EE bars and part of stamps from next pane at right NH		\$25.00
77	1508	8c Christmas block folded and miscut showing part of stamp from next pane NH		\$18.00
78	702	2c Red Cross with shifted cross NH		\$11.00
79	1280d	2c Frank Lloyd Wright ME block of 6, tagging omitted NH		\$35.00
80	1942-5	20c Cactus engraved colors shifted up NH		\$45.00
81	2,093	20c Roanoke ink blob on UL stamp NH		\$20.00
82	1338	6c Flag LR plate block with very light pin impressions in righth margin - appears imperf. NH		\$40.00
83	1745-8	DONATION 13c Quilts block with horiz perfs shifted diagonally NH		\$25.00
84	1745-8	DONATION 13c Quilts block with horiz perfs shifted diagonally. Similar to previous lot but marginal copy. NH		\$20.00
85	1338	6c Flag Zip block, horiz misperf and miscut showing full intrasheet gutter with 4mm of stamps from pane below. NH		\$40.00
86	632a	1c Franklin miscut booklet pane with partial plate # NH		\$13.00
87	BK102	3c Jefferson booklet - a rarity - horiz misperfs of both panes in complete 12 stamp booklet. Top pane 8.5mm shift up, lower pane 13mm shift up. Cover is folded back and has creases. NH		\$150.00
88	1213a	5c Washington booklet pane miscut up. Parts of stamps from next pane show on tab. NH		\$13.00
89	1213a	5c Washington booklet pane miscut to right showing parts of 3 stamps from adjoining pane NH		\$9.00
90	C83	13c Airmail imperf coil pair NH	\$65.00	\$45.00
91	C78a	11c Airmail booklet pane miscut showing parts of stamps from next pane at right. NH		\$10.00
92	1305	6c FDR misperf coil pair NH		\$15.00
93	1280a	2c Frank Lloyd Wright booklet pane miscut showing partial plate # NH		\$7.00

94	2641-5	37¢ Antique Toys double-sided booklet. Both sides have vert perfs shifted left 11mm (50%) NH		\$90.00
95	1813d	3.5¢ Violins imperf and miscut coil pair NH	\$125.00	\$85.00
96	1395a	8¢ Eisenhower booklet pane miscut to show parts of stamps from next pane at bottom. NH		\$2.00
97	1395d	BK123 8¢ Eisenhower complete booklet with 2nd and 4th panes miscut to left with full EE bars in right margin. Scarce. NH		\$45.00
98	1768	15¢ Christmas change of legend misperf NH		\$8.00
99	2136b	25¢ Bread Wagon imperf coil strip of four NH		\$19.00
100	1339	6¢ Illinois color shift NH		\$20.00
101	1287	13¢ JFK misperfed down the middle NH		\$22.00
102	2013	20¢ Dr. Mary Walker misperf. 9mm x 4mm spot of disturbed gum with small thin LH		\$11.00
103	1804	15¢ Benjamin Banneker misperf NH		\$14.00
104	1286	12¢ Henry Ford misperf NH		\$12.00
105	1596	13¢ Shield and Eagle misperf NH		\$8.00
106	1529	10¢ Skylab misperf NH		\$9.00
107	1359	6¢ Leif Erikson reverse offset NH		\$48.00
108	1472	8¢ Santa color shift NH		\$9.00
109	1555	10¢ D.W. Griffith small color shift NH		\$6.00
110	2431c	25¢ Eagle self-adhesive vert pair with die cutting omitted NH	\$200.00	\$125.00
111	1608	DONATION 50¢ Lamp color shift NH		\$28.00
112	1282	4¢ Lincoln perf shift up NH		\$6.00
113	1282	4¢ Lincoln perf shift down NH		\$10.00
114	68	10¢ Washington horiz perfs shifted up and into stamp USED		\$75.00
115	1800b	15¢ Santa; green, yellow and tan omitted; other colors misaligned as always. NH		\$250.00
116	65	3¢ Washington misperf down USED		\$20.00
117	65	3¢ Washington misperf up USED		\$20.00
118	2015c	20¢ America's Libraries missing all the colors. Caused by double sheeting. You can see the embossed design. Copy of APEX certificate for the sheet included. NH	\$175.00	\$100.00
119	1308	5¢ Indiana - Two color shifts NH		\$20.00
120	C95-6	25¢ Wiley Post pair with color shift (and top selvage) NH		\$70.00
121	113	2¢ of 1869 series misperfed up. Good color and light cancel. USED		\$100.00
122	2031	20¢ Science and Industry black color shift NH		\$30.00
123	C90	31¢ Airmail reverse offset - bright color. NH		\$90.00
124	1611	\$2 Oil Lamp vert pair with engraved color shifted down NH		\$60.00
125	1393D	7¢ Franklin two-way misperf NH		\$20.00
126	1935	20¢ FDR misperf NH		\$10.00
127	1485	8¢ Robinson Jeffers misperf with capture of EE bars at right NH		\$13.00
128	1577-8	10¢ Banking and Commerce nice color shift, but pair is separated NH		\$14.00
129	1838-41	15¢ Architecture misperfed block NH		\$26.00
130	E15	10¢ Special Delivery block, paper splice with double paper NH		\$13.00
131	1464-7	8¢ Wildlife block with 1mm black color shift NH		\$21.00
132	2877	G-rate make-up block of 10 with misplaced and diagonal horiz perfs. Top two stamps are extra-large. NH, but a 6 x 3 mm spot of disturbed gum.		\$60.00
133	1749-52	13¢ Dance block with vert perfs misplaced and showing full intrapane gutter at left. NH		\$40.00
134	1700	13¢ Adolph Ochs Zip block with horiz perfs shifted down 5mm. NH		\$13.00
135	E15	10¢ Special Delivery vert pair. Nine perf pins missing/broken in the row of perfs between the stamps. NH		\$7.50
136	U571a	Unused entire envelope with "10¢ USA" omitted	\$100.00	\$75.00
137	2254	5.3¢ Elevator coil misperfed 6mm to right used on commercial cover.		\$25.00
138	332	2¢ Washington misperf used on cover dated Jan 5, 1909.		\$25.00
139	U586	16¢ revalued to 15¢ envelope with offset of revaluation on back of envelope. Front is normal. Unused entire.		\$18.00
140	UX40a	2¢ Revalued postal card surcharged vertically, reading down. Unused.	\$7.00	\$2.50
141	498	1¢ Washington, two paper fold and misperfed strips on commercial cover. Used		\$450.00
142	1384c	6¢ Christmas plate strip of 10 light green omitted. NH	\$250.00	\$150.00
143	1856var	14¢ Sinclair Lewis horiz strip of 11 heads with imperf between on right. This is not 1856d and is rare. NH		\$100.00
144	2072	20¢ Love plate strip of 20 with vert perfs misplaced diagonally. NH		\$350.00
145	3178	\$3 Mars Pathfinder vert pair of SS, with horizontal gutter between - from press sheet. Not an EFO, strictly speaking. NH		\$15.00
146	BK117A	15¢ O.W. Holmes booklet. All three panes are misperfed down the middle of poor Justice Holmes head. I put black paper behind the top pane so you can see the perfs. NH		\$40.00
147		Group of 10 different small misperfs from 551 to C25. NH		\$15.00
148		Group of 12 different EFOs including color shifts, perf shifts, overinking and a miscut. NH		\$25.00
149	774	3¢ Boulder Dam block of 10 with plate number. Corner fold prior to perforating causes crazy perfs in margin. 2 stamps LH, rest NH		\$35.00
150	1462	15¢ Olympics plate strip of 10 with color shifts creating "uphill runner". NH		\$135.00
151	3865-8	37¢ Disney corner block with horiz die cuts shifted up. NH		\$60.00
152	1475	8¢ Love misperfed plate block of 6 NH		\$90.00
153	2873	Recalled Legends of the West sheet with USPS cardboard holder. NH		\$90.00

You can buy unsold lots from prior Auctions for \$1 over reserve price plus shipping, with no commission, on a first come-first served basis.

Auction 142 closes on April 30th, 2016
View large auction pictures in color at <http://www.efocc.org>



Auction 142 closes on April 30th, 2016
View large auction pictures in color at <http://www.efoc.org>

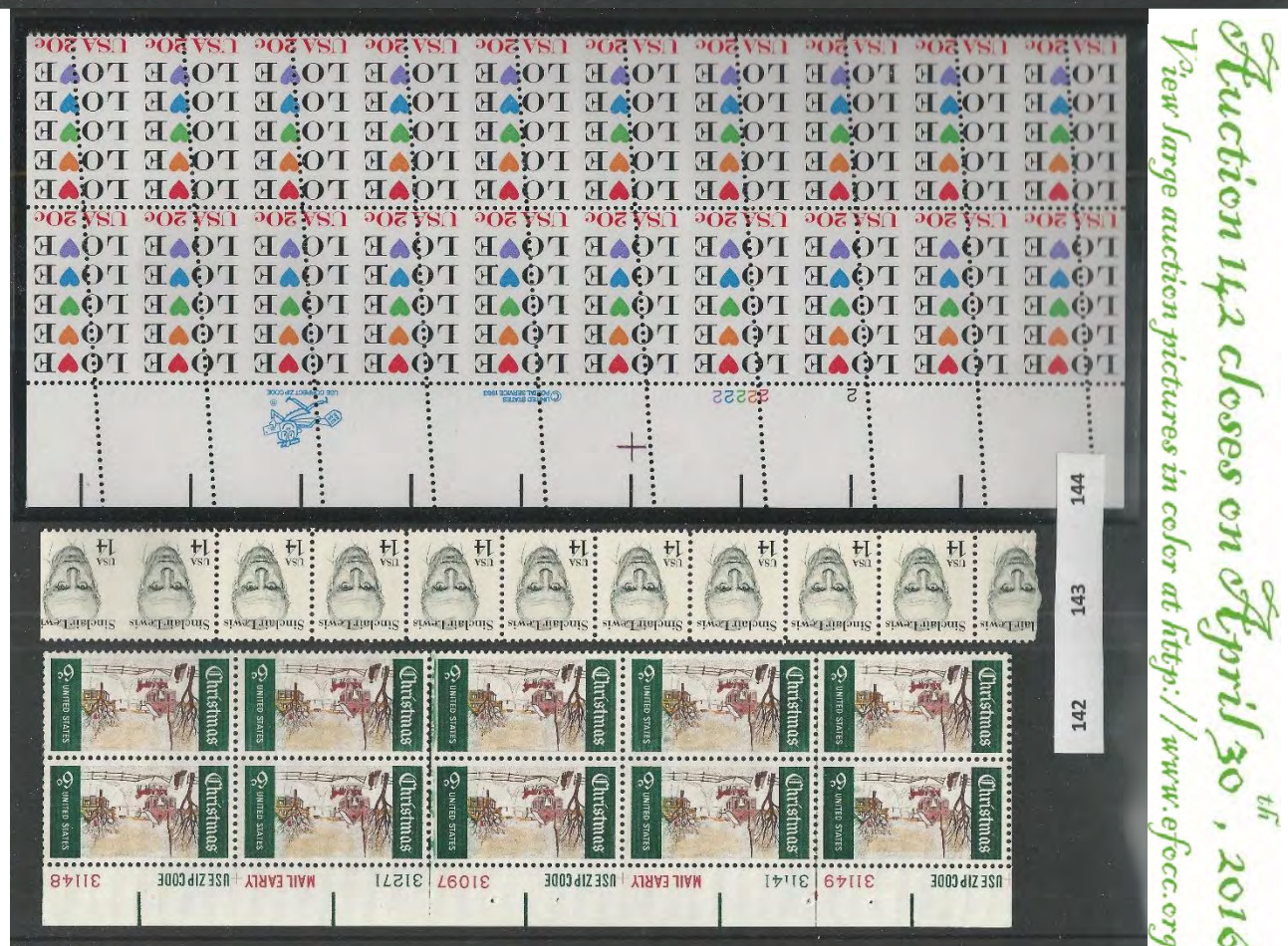


Auction 142 closes on April 30th, 2016
View large auction pictures in color at <http://www.efocc.org>





Auction 142 closes on April 30th, 2016
View large auction pictures in color at <http://www.efocc.org>



Auction 142 closes on April 30th, 2016
View large auction pictures in color at <http://www.efocc.org>

*Auction 142 closes on April 30th, 2016
View large auction pictures in color at <http://www.efocc.org>*



EFOCC Auction Consignment Form

EFOCC use – only ⇒ AUCTION #:

LOT #:

Consignor: _____ Address: _____ _____ Telephone: (____) - _____ Email/Fax: _____ EFOCC Membership No: _____ APS Membership No: _____	Country (if not U.S.): _____ Catalog No. _____ _____ Catalog Value: _____ _____	Condition (circle): NH LH HH HR NG USED Please check if this is a donation lot: <input type="checkbox"/> Please note Minimum Bid: \$ _____
--	---	--

Description of item: {Please note any faults and fasten lots below this line or on the reverse side}

Instructions: Fill in all information. Attach each lot to the front of one form, using a stock card, face-down glassine or other mount. Use separate rigid sheet for larger lots and attach a completed form. No staples - please. Make sure it is easy for us to remove and re-insert each lot.



Send consignment form(s) with lot(s) to: David Hunt, 45 Fairway Drive, Denver, PA 17517
 For your protection, we recommend that you send lot(s) by registered or insured mail.



EFOCC Auction Bid Sheet

Name: _____ EFOCC #: _____ *New Bidders.....APS Membership appreciated: _____*
 Address: _____ Phone: (____) _____ *Please limit my purchases to:*
 City: _____ State: _____ Zip: _____ \$ _____

Please execute the following bids for me in EFOCC Auction # _____

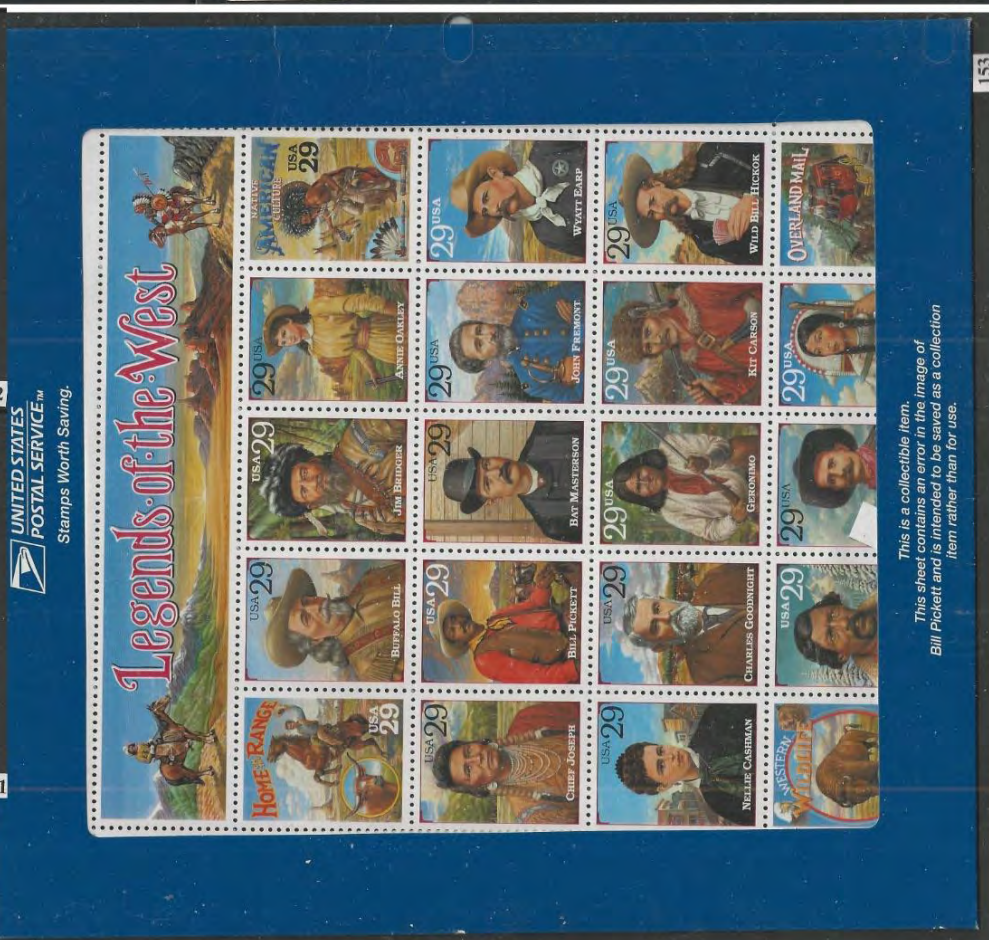
 {Signature - all bid sheets must be signed}

 {Date}

Earliest postmark wins tie bids!!

Lot#	Bid	Lot#	Bid	Lot#	Bid	Lot#	Bid	Lot#	Bid	Lot#	Bid

Postage will be charged to the bidder. A 10% buyer's premium will be added to successful bids.
 Mail bid sheets to: David Hunt, 45 Fairway Drive, Denver, PA 17517 or email to: dhhunt@ptdprolog.net



For over 60 years...



American philately's #1 dealer in major errors.



Now also your source
for investment grade
U.S. classics.

Jack Nalbandian, Inc.

Post Office Box 71
East Greenwich RI 02818
Toll Free: (877) 742-6168
Phone: (401) 885-5020
nalbandianj@earthlink.net

www.nalbandstamp.com

IMPERFECT But Desirable

Mistakes can cost thousands of dollars. Stamp collectors know errors are not waste, but one-of-kind gems. Let us provide you with these desirable stamps.

Each of our auctions features hundreds of unique EFOs from the USA and around the World.

Looking to sell? We are the official auctioneer at five major stamp shows each year.

For a complimentary auction catalog, call us toll free:

1-800-782-0066

or visit our website at

www.Regency-Superior.com



Your Source for Buying, Selling & Consigning Errors, Freaks & Oddities

STAMPS • COINS • SPACE • AUTOGRAPHS

REGENCY SUPERIOR

Experienced Auctioneers Since 1929

229 North Euclid Avenue • Saint Louis, MO 63108



ifsda
Int. Federation of stamp
dealers' associations

